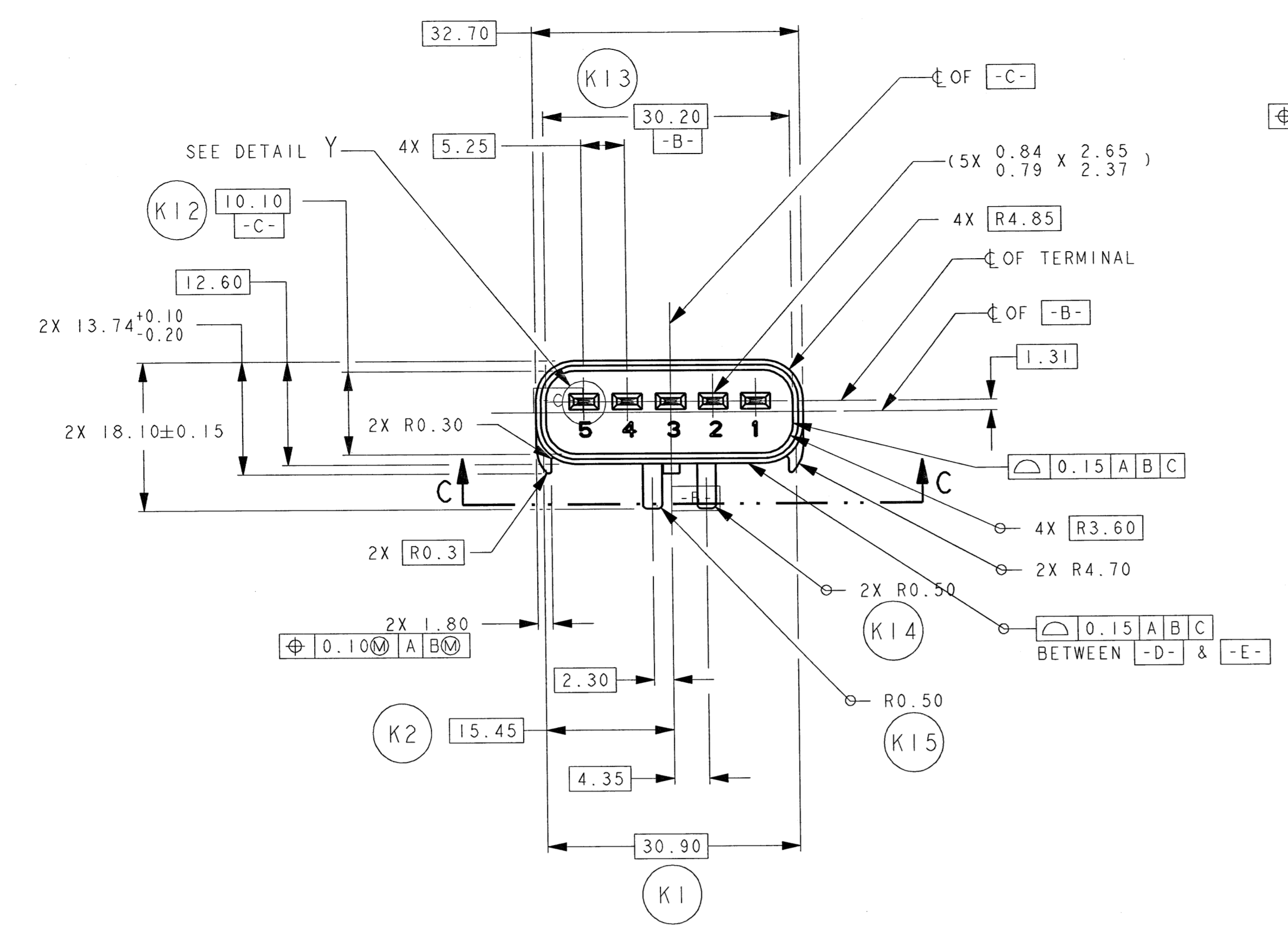
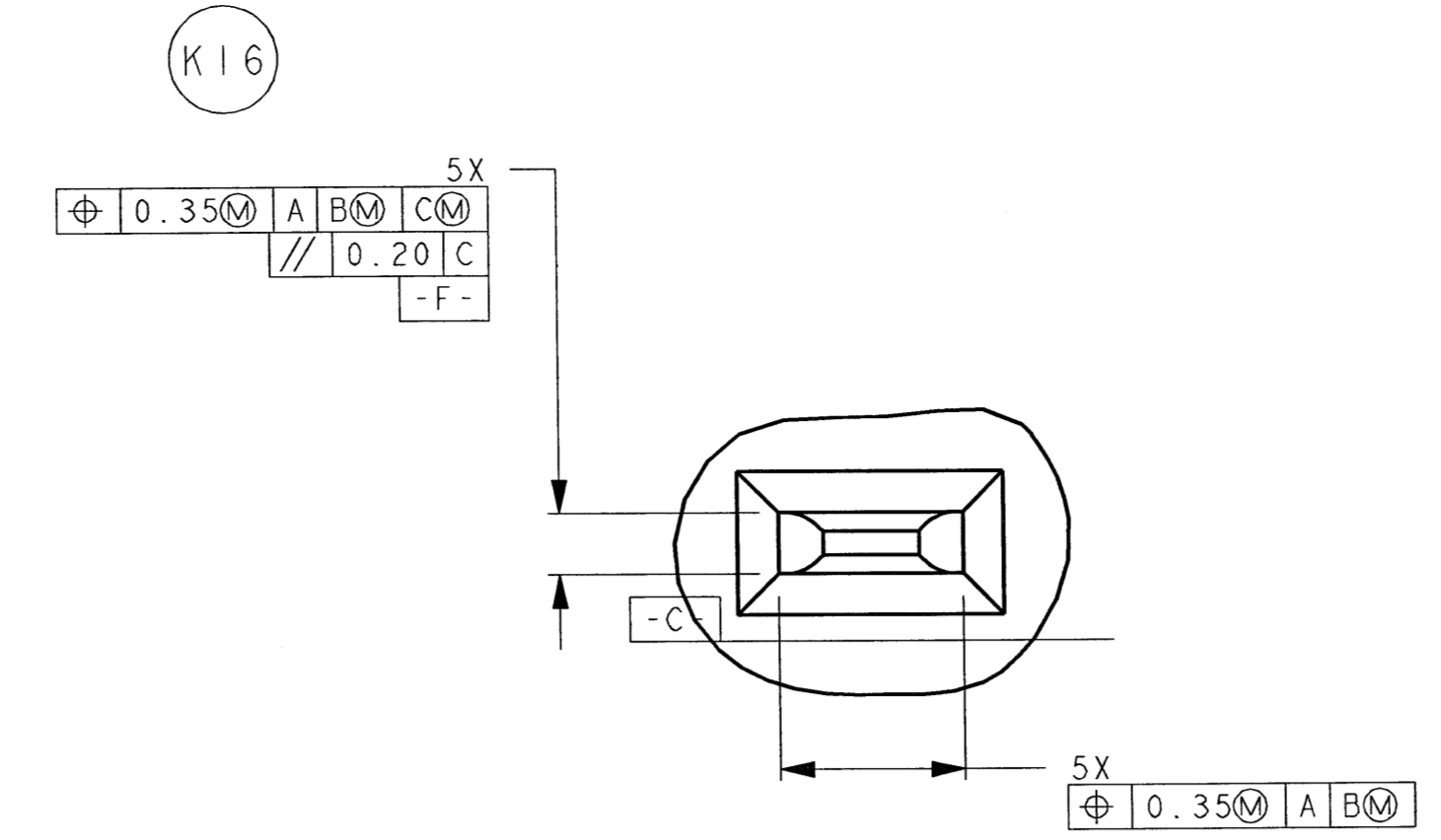


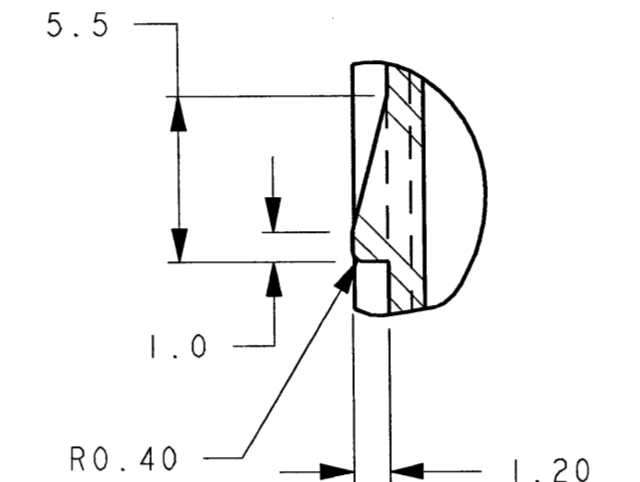
SECTION C-C
SCALE 4:1



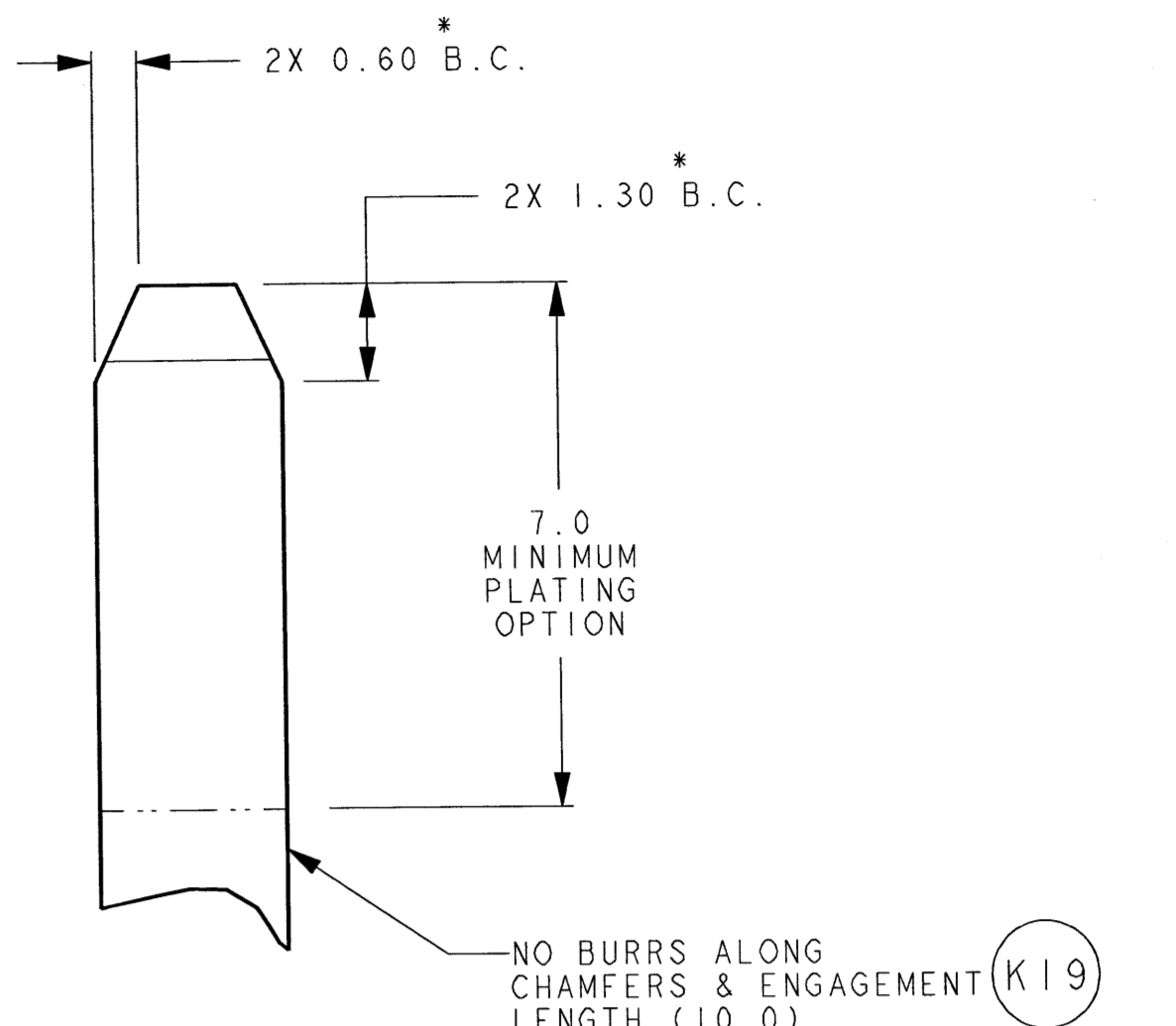
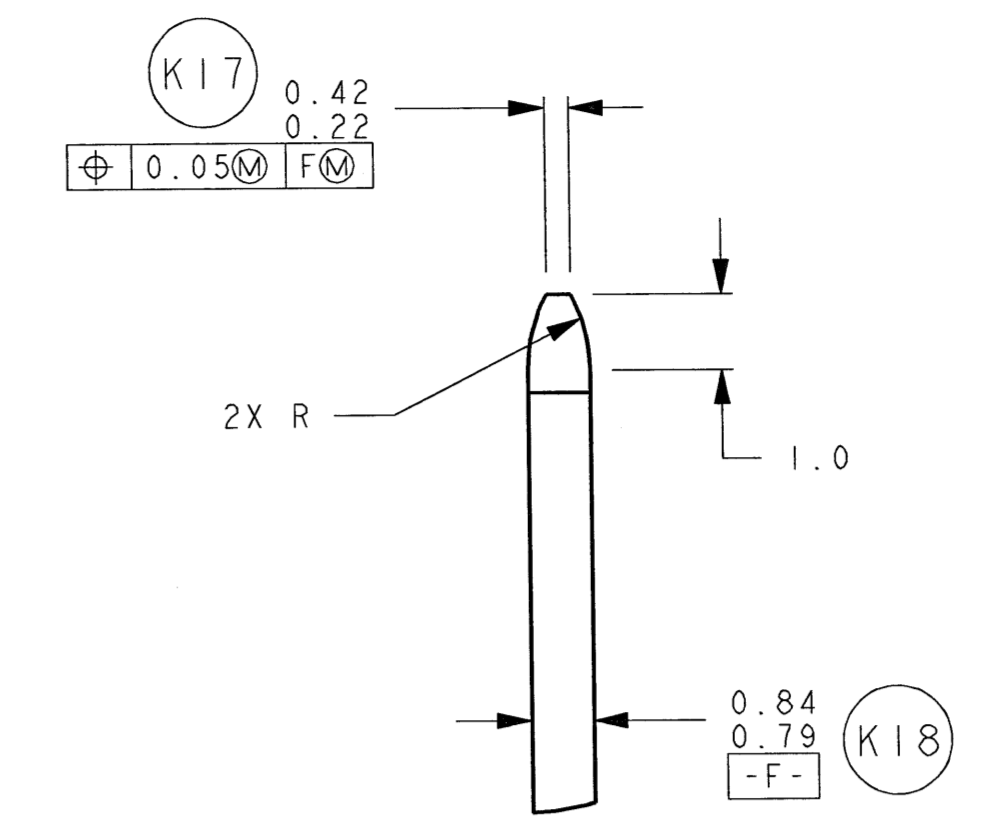
POLARIZING OPTION
TYPE "A" SHOWN
DIMENSIONS FOR OTHER OPTIONS
SAME EXCEPT AS SHOWN



DETAIL Y
SCALE 10:1



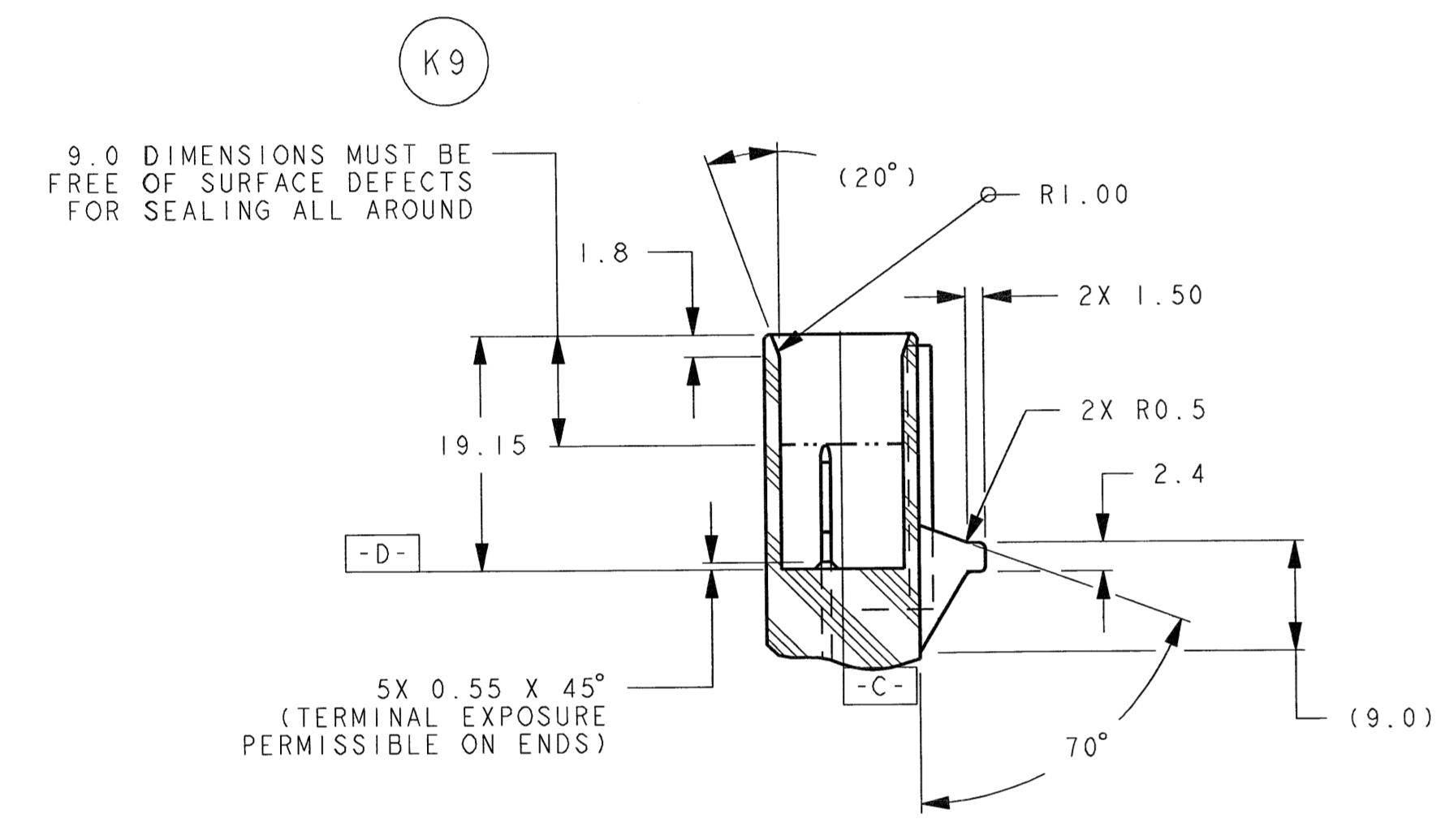
DETAIL Z
SCALE 4:1



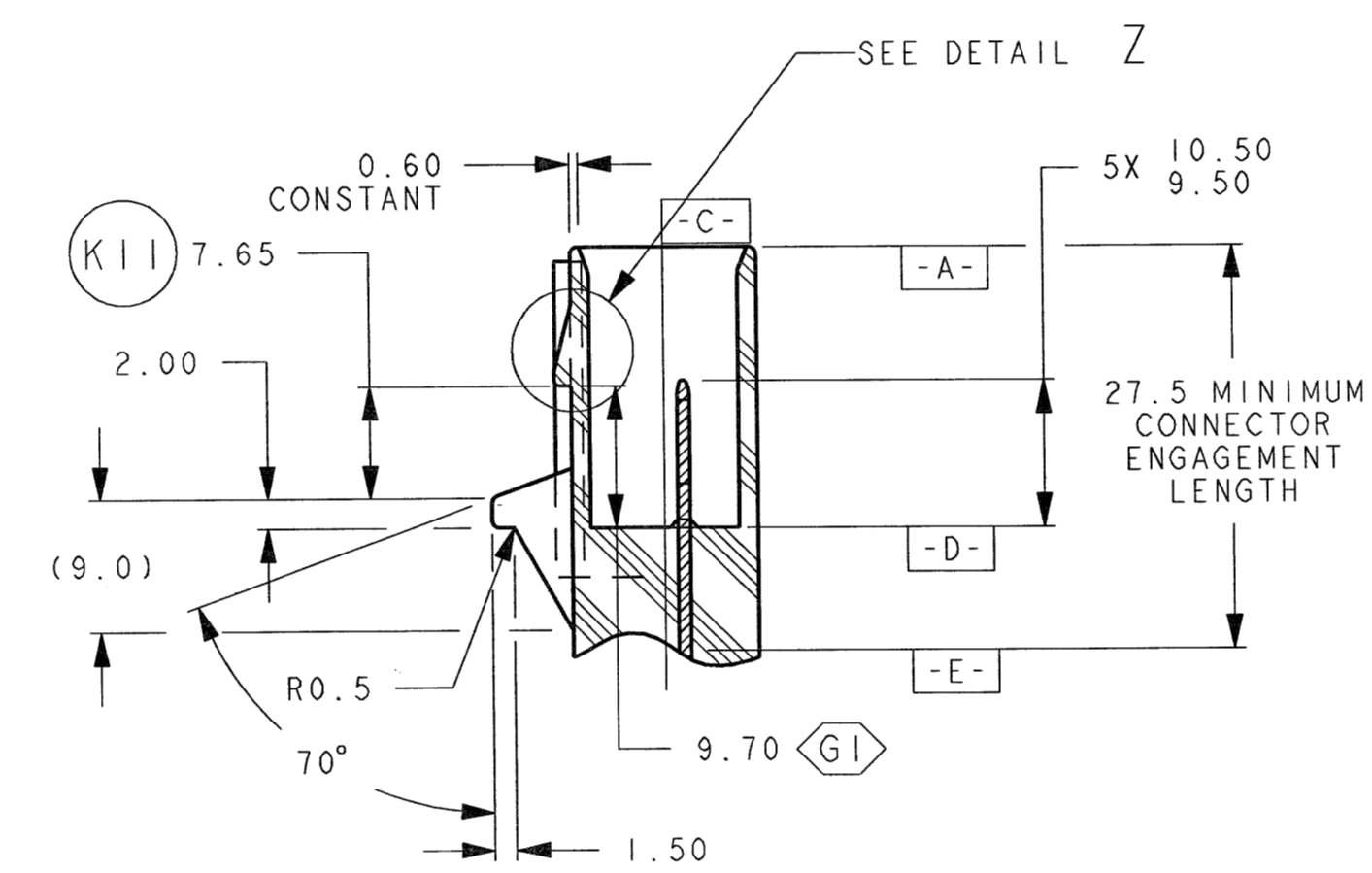
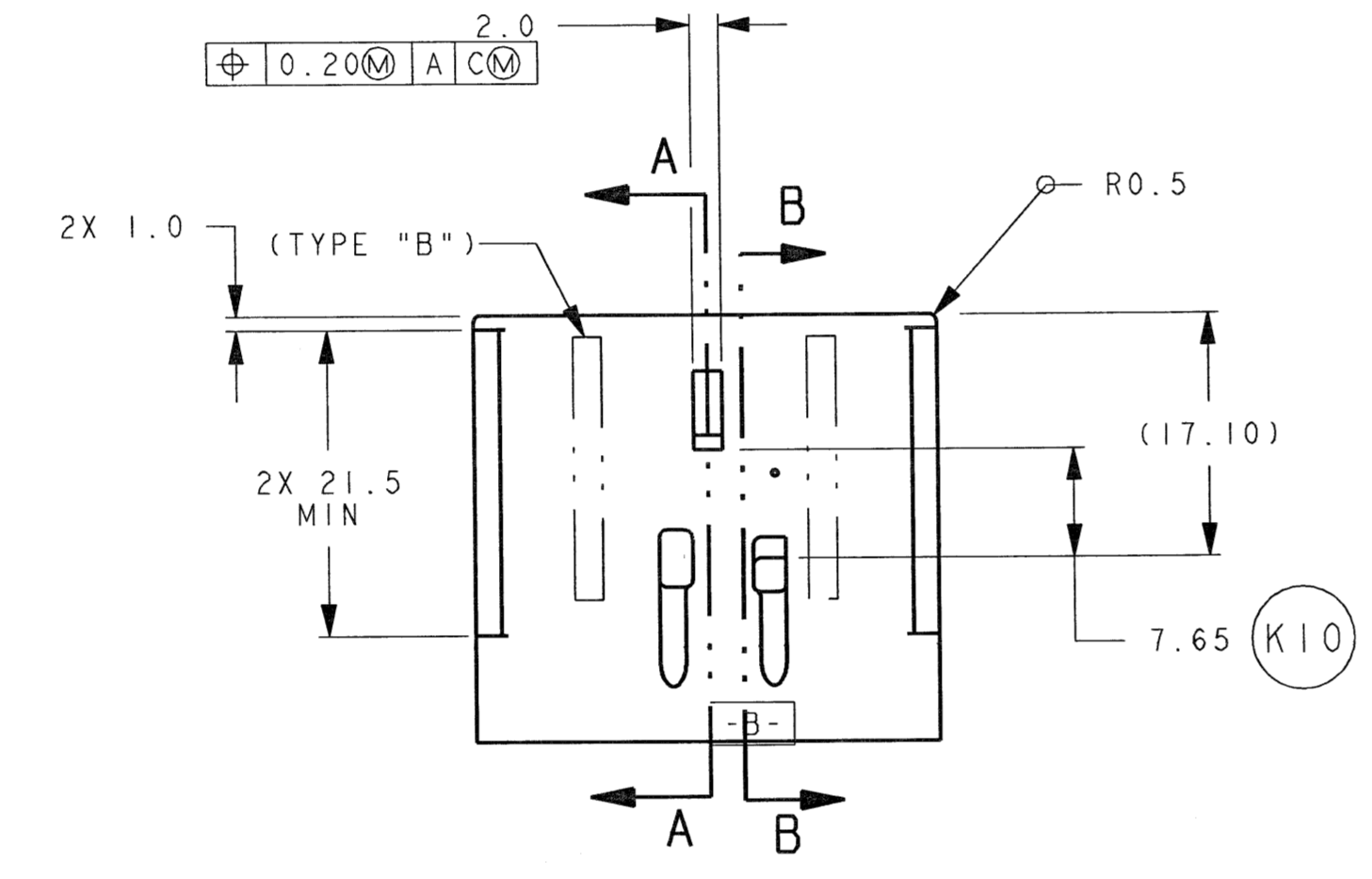
MALE TERMINAL (ENGAGEMENT AREA)
*B.C. INDICATES BEFORE COINING
MUST BE APPROVED BY ENGINEERING:
BASE MATERIAL - HIGH CONDUCTIVITY COPPER ALLOY (>80%)
PLATING NOTES (CONTACT AREA)
TIN (125°C MAXIMUM CONTINUOUS TEMPERATURE)
A. HOT TIN DIP 0.5um TO 2um (20uin TO 80uin)
OR
B. POST ELECTRO MATTE TIN
BARRIER PLATE (OPTIONAL FOR SOLDERABILITY) - UNDERPLATE
WITH COPPER 2.5um (100uin) MIN. THICKNESS
TOP LAYER 5.0um ± 2.5um (200uin ± 100uin) TIN
PER ASTM B-545-83

PRECIOUS METAL: WHEN SPECIFIED (PER USCAR EWCAP-001 PLATING REQUIREMENTS)
BARRIER PLATE - (OPTIONAL FOR SOLDERABILITY) UNDERPLATE
WITH COPPER 2.5um (100uin) MIN THICKNESS PER ASTM B-105
INTERMEDIATE LAYER #1 SULFAMATE DUCTILE NICKEL 1.27um - 2.5um
(50uin - 100uin) THICK PER ASTM B699 TYPE 2
INTERMEDIATE LAYER #2 OPTIONAL 1.0um (40uin) MIN THICKNESS
PALLADIUM ELECTROPLATE PER ASTM B-105
TOP LAYER 0.1um (4uin) MIN THICKNESS HARD GOLD OVER LAYER #2
0.5um (20uin) MIN THICKNESS HARD GOLD IF LAYER #2 IS NOT
APPLIED, PER ASTM B-105
FOR HEAVY DUTY DIESEL ENGINES: WHEN SPECIFIED
TOP LAYER 1.27um (50uin) MIN THICKNESS HARD GOLD ELECTROPLATE
PER ASTM B-488 TYPE 2 CODE "C" OVER INTERMEDIATE LAYER #1
OR
INTERMEDIATE LAYER #2 1.27um (50uin) MIN THICKNESS
PALLADIUM ELECTROPLATE
TOP LAYER 0.05um (2uin) MIN THICKNESS HARD GOLD ELECTROPLATE

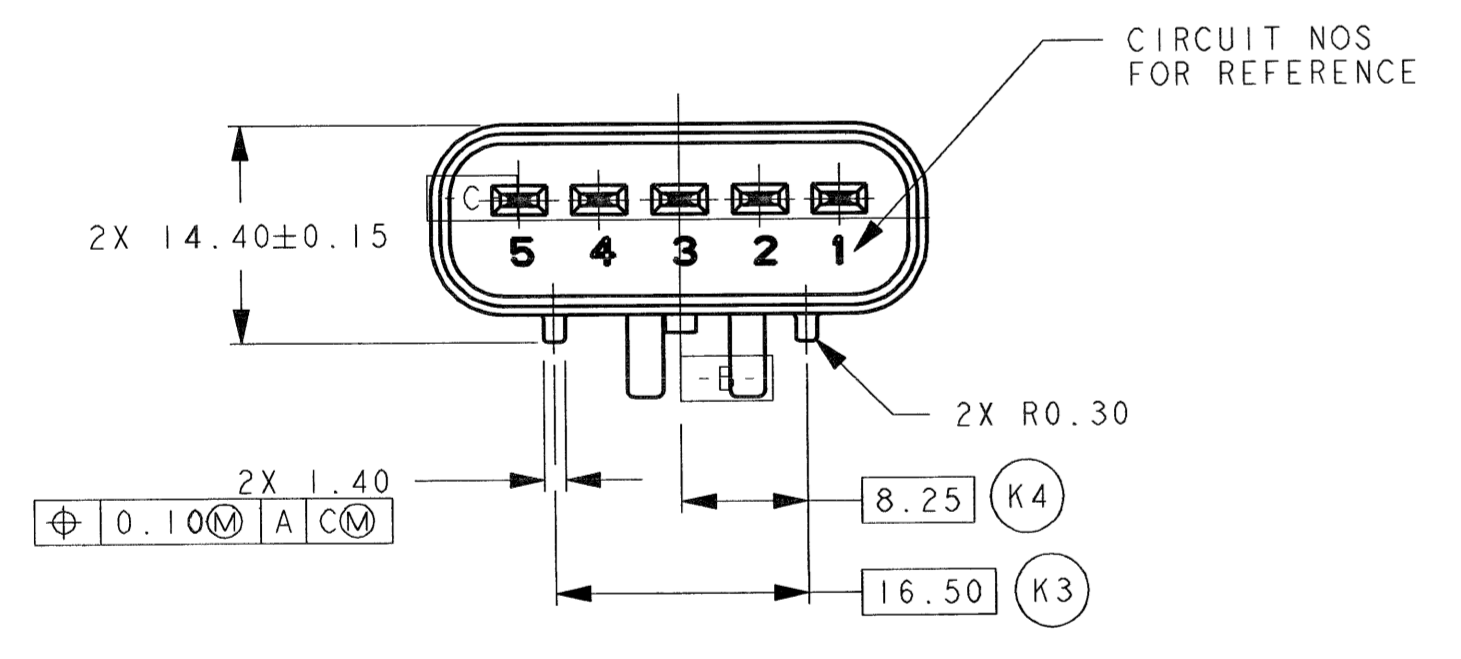
NOTE: ABOVE NOTES RELATING TO MATERIAL AND
PLATING ARE FOR REFERENCE ONLY. PARTS
MUST BE VALIDATED TO CUSTOMER REQUIREMENTS.



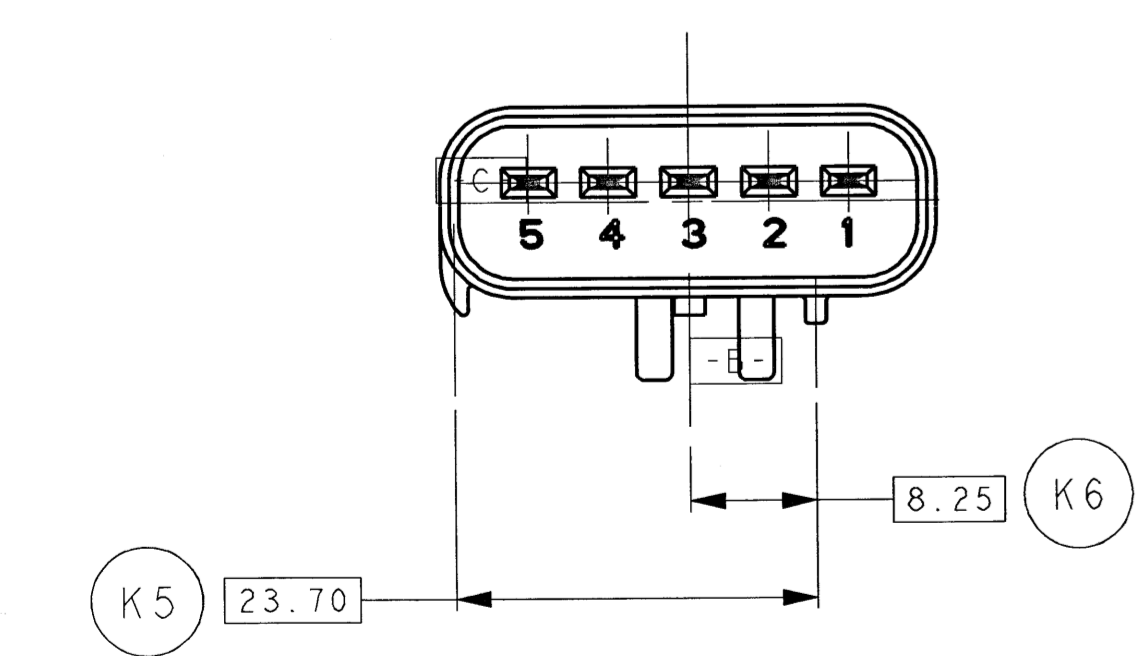
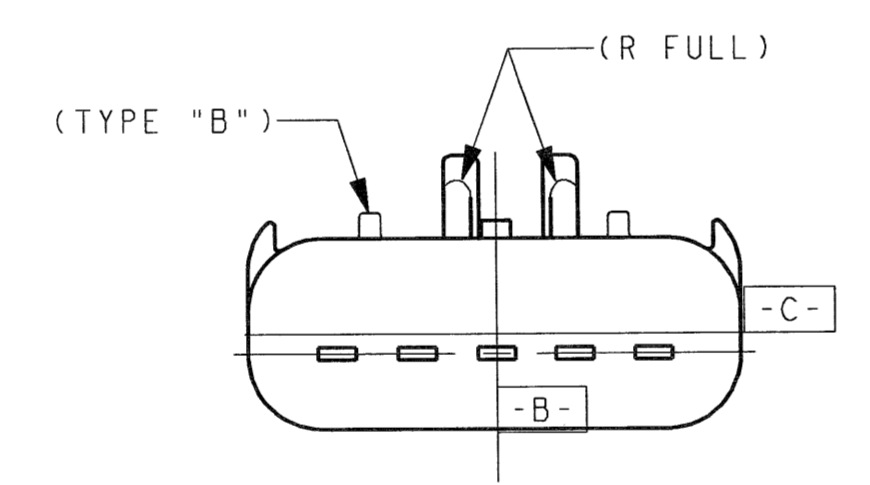
SECTION B-B



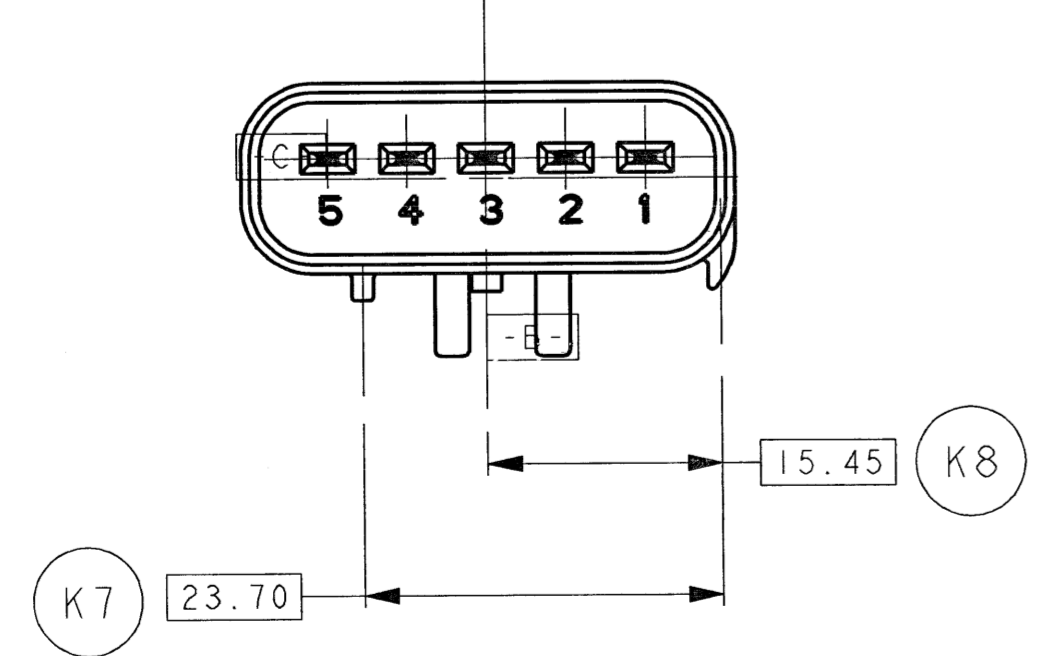
SECTION A-A



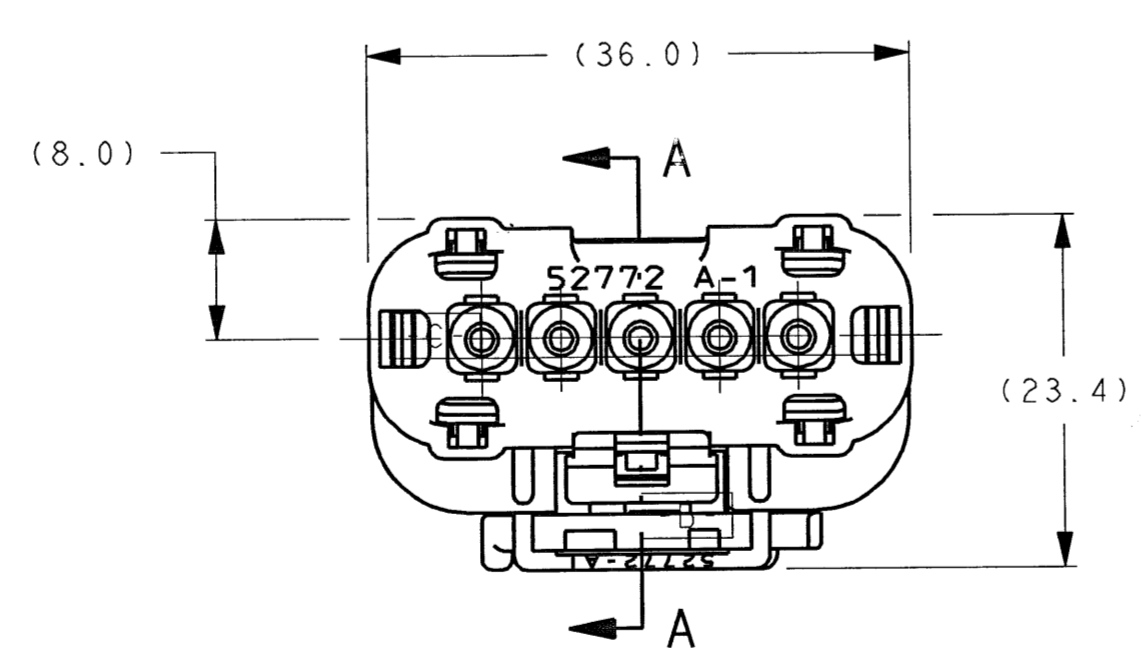
TYPE B



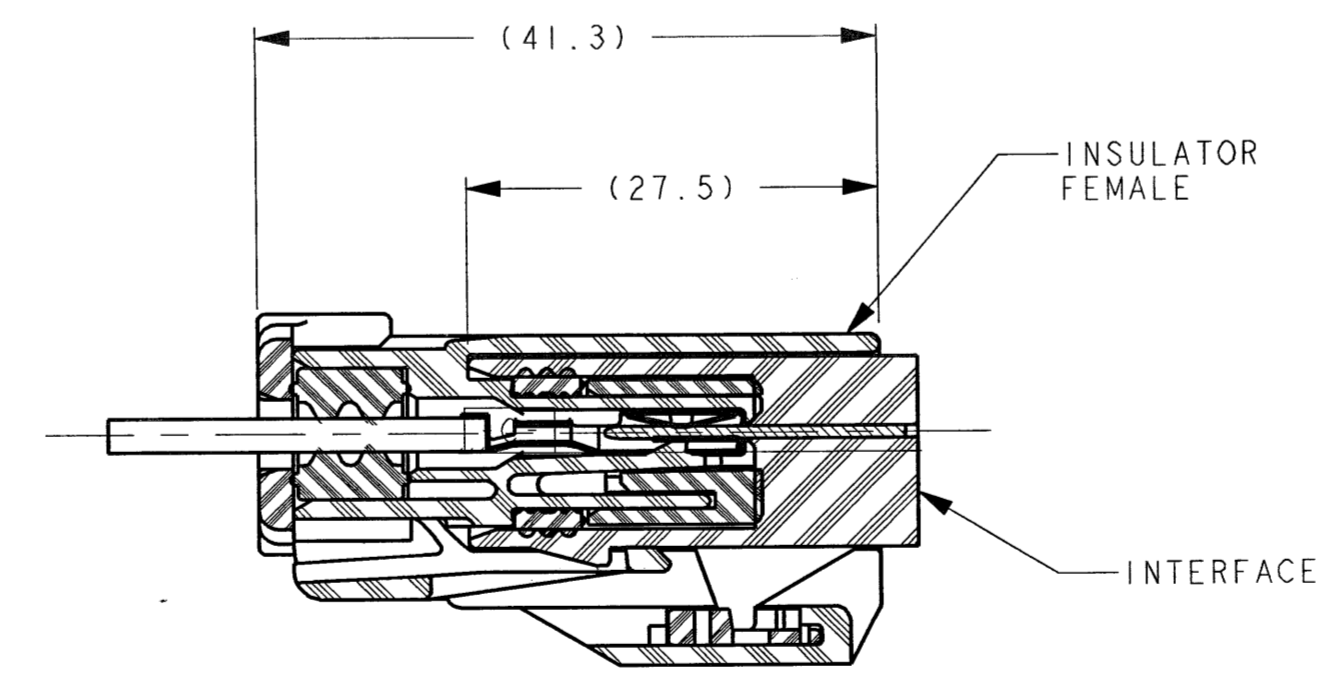
TYPE C
SEE POL. TYPES A & B
FOR DIMENSIONS



TYPE D
SEE POL. TYPES A & B
FOR DIMENSIONS



CONNECTOR ASSEMBLY VIEWS
FOR REFERENCE ONLY



SECTION A-A

54200520	UN-SEALED	NATURAL	TYPE D
54200524	SEALED	NATURAL	TYPE D
54200519	UN-SEALED	DK. GRAY	TYPE C
54200523	SEALED	DK. GRAY	TYPE C
54200518	UN-SEALED	LT. GRAY	TYPE B
54200522	SEALED	LT. GRAY	TYPE B
54200517	UN-SEALED	BLACK	TYPE A
54200521	SEALED	BLACK	TYPE A
MATES WITH 5 WAY FEMALE		SEALED OR UN-SEALED	POLARIZING OPTION

(K) INDICATES IN-PROCESS INSPECTION FOR MANUFACTURING DIMENSION(S) OR SPECIFICATION(S) : 21
WIRING FABRICATORS MUST PURCHASE FROM ENGINEERING APPROVED SOURCES
MATES WITH 5 WAY FEMALE INSULATOR SEE CHART
UNLESS OTHERWISE SPECIFIED TOLERANCES ARE AS FOLLOWS:
2 PLACE DIMENSIONS ±0.10
1 PLACE DIMENSIONS ±0.25
ANGULAR ±2°
DRAFT PERMISSIBLE WITHIN DIMENSIONAL TOLERANCE ONLY UNLESS OTHERWISE SPECIFIED
MUST CONFORM TO USCAR EWCAP-001
R 0.15 MAXIMUM ON CORNERS AND FILLETS SHOWN AS SHARP
PART TO BE MOLDED FREE FROM FLASH, VOIDS, STRESSES, IMPERFECTIONS AND TOOL MARKS, THAT AFFECT FUNCTION, OR HANDLING OF THE PART
ALL EJECTOR MARKS 0.10 MAXIMUM HIGH TO 0.25mm BELOW THE SURFACE OF THE PART
TOOL MUST BE INTERCHANGEABLE TO PRODUCE ALL KEY TYPES AS CHARTED UNLESS OTHERWISE SPECIFIED
(G) DENOTES GAGE REQUIREMENTS FOR USER AND MANUFACTURER
(K21) PLATE BLADE TERMINAL PER THE ABOVE NOTES

UNCONTROLLED
FCI AUTOMOTIVE
1/2/2008
AMERICAS
FCI MASTER COPY WHEN IN RECD

10080	12-15-07	B	JSD	127.01 MIN WDG 124.51 MIN IN CORR ASSY BLK	ASHOK	SSS	SSS
8936	10-18-07	A		REPLACES FOR ENGINEERING: REPLACES WITH NEW CCI TITLE BLOCK	DMR	SSS	SSS
REV	DATE	REVISION	DATE	DESCRIPTION	BY	CHK	APP
1				ORIGINAL DESCRIPTION	DMR	SS	SS
				THIS DRAWING AND ALL OTHER INFORMATION CONTAINED HEREIN IS UNCLASSIFIED AND THE PROPERTY OF FCI. IT IS TO BE RELEASED TO THE PUBLIC AND FORN DISSEM UNLESS INDICATED OTHERWISE BY FCI. DATE 11/21/04			
TOLERANCES	SEE NOTES	MATERIAL	SEE UNLESS OTHERWISE SPECIFIED				
FINISH	AS9000	COLOR	SEE ENG. DRAWING				
DO NOT SCALE DRAWING	100% NO. 1	TEST PROC.	SEE ENG. DRAWING				
DATE	11-21-04	NAME	RAJAKUMAR	TITLE	FCI 2 MM DIRECT CONNECT	DRAWN BY	DMR
DATE	11-21-04	NAME	SUCHA SIAN	TITLE	INTERFACE SPECIFICATION	DATE	11/21/04
DATE	11-21-04	NAME	SUCHA SIAN	TITLE	5-WAY MALE	DATE	11/21/04
				FIG. NO.	6243	REV. NO.	2
				FIG. NAME	G36005	DATE	11/21/04