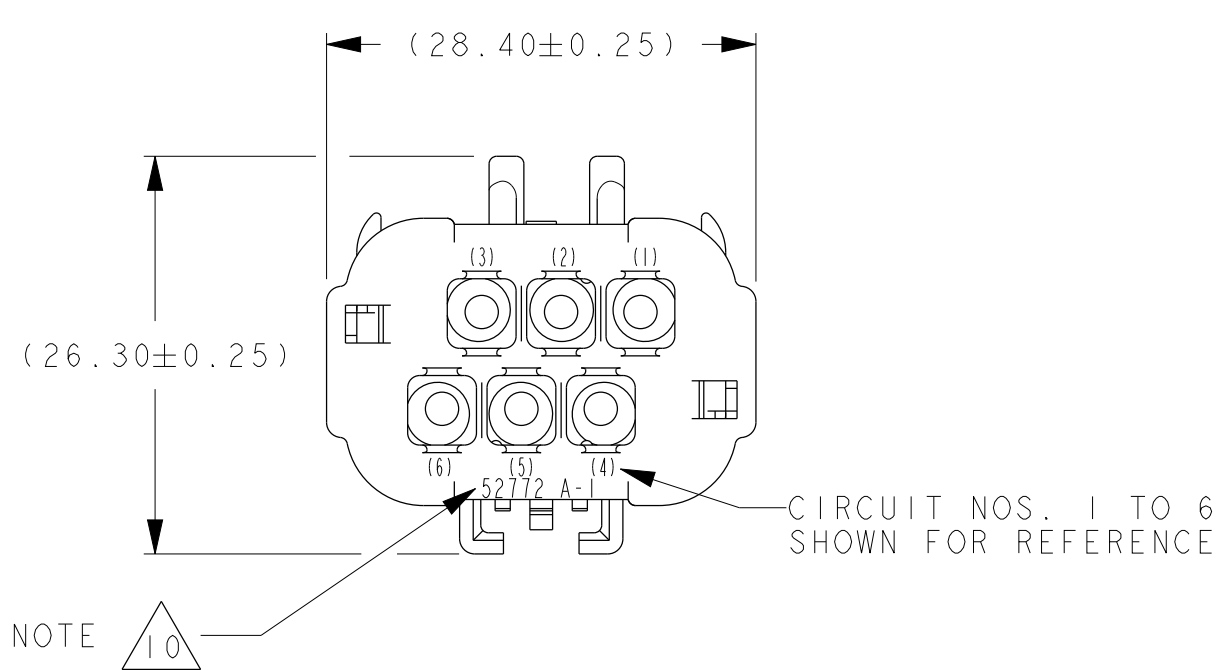
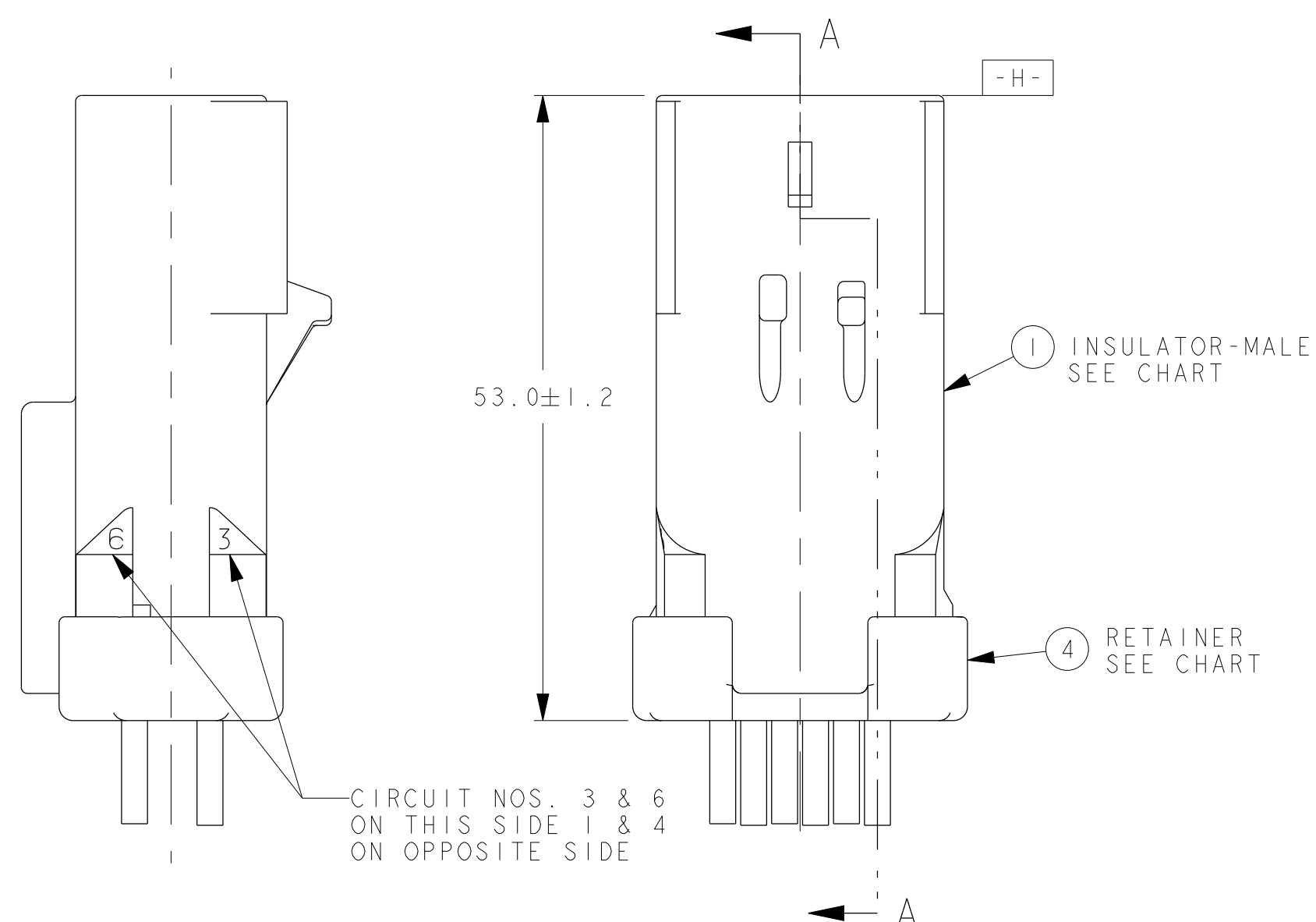
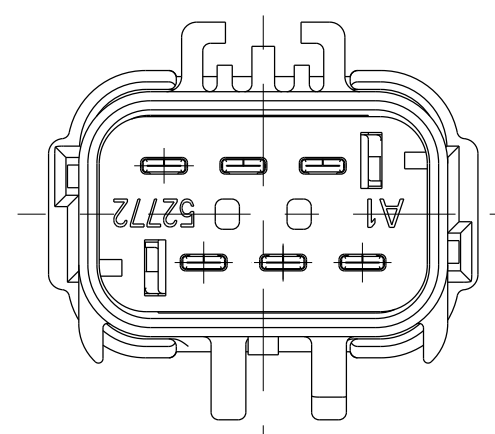
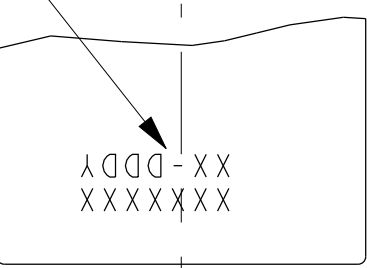
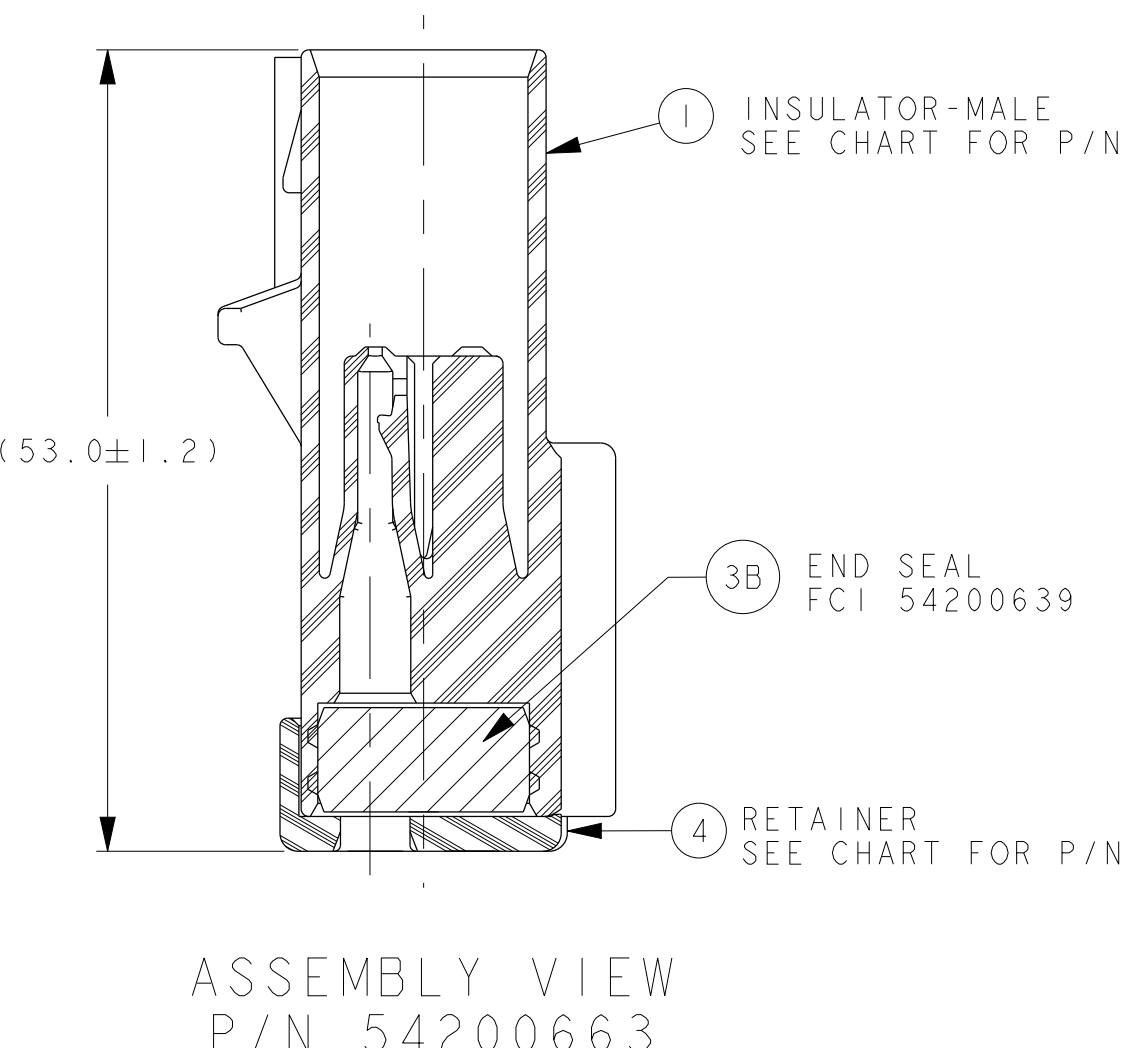
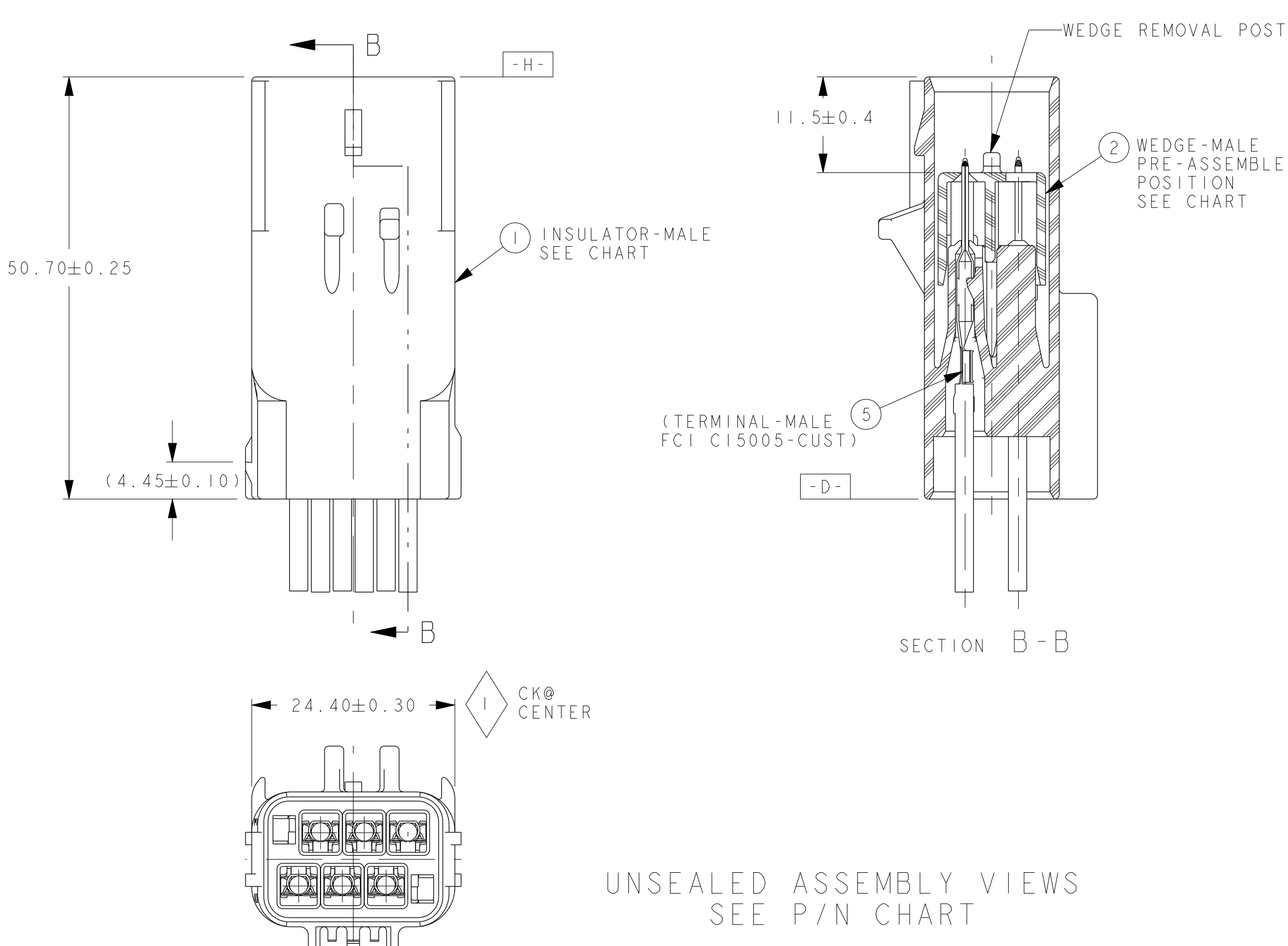
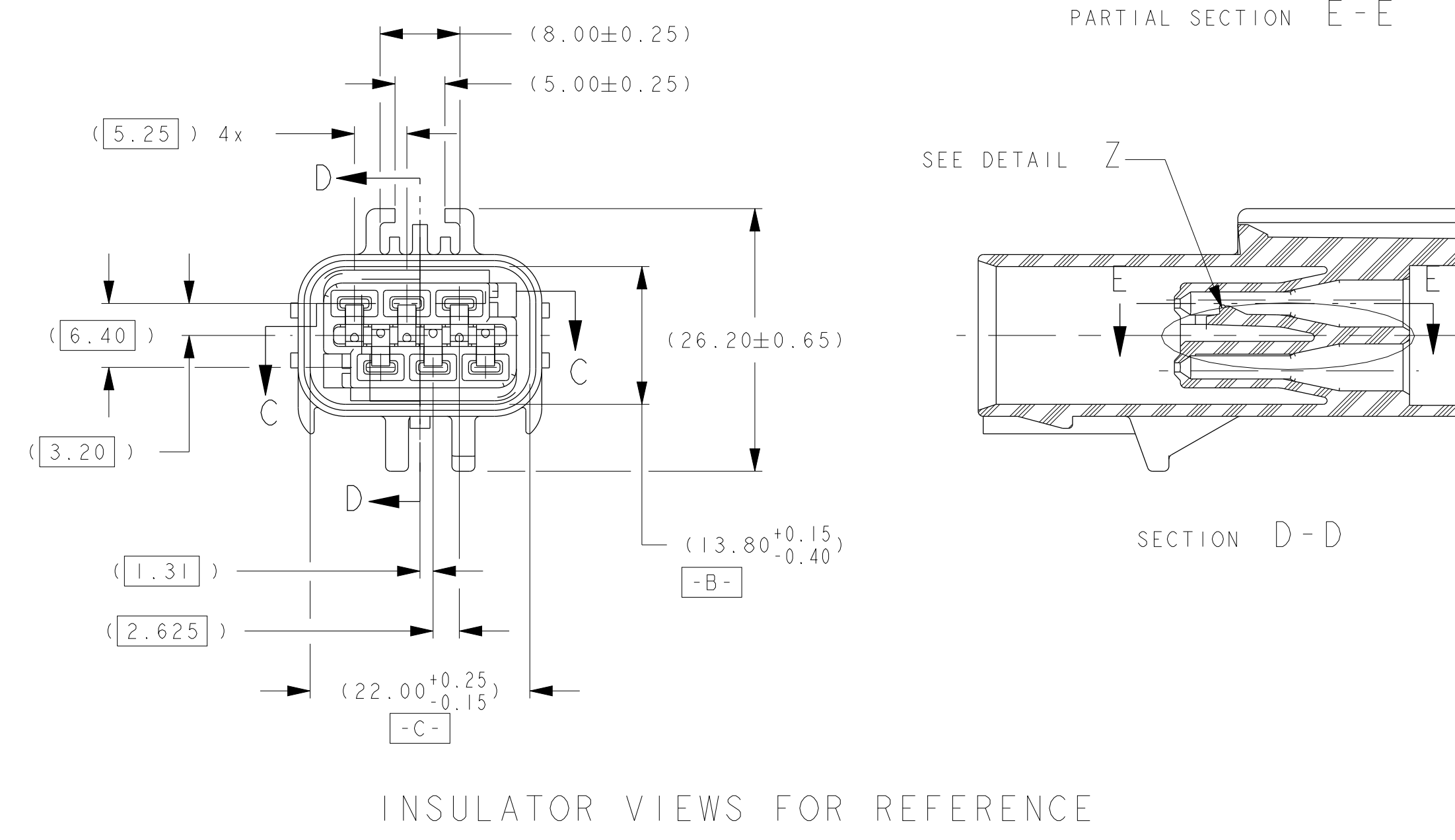
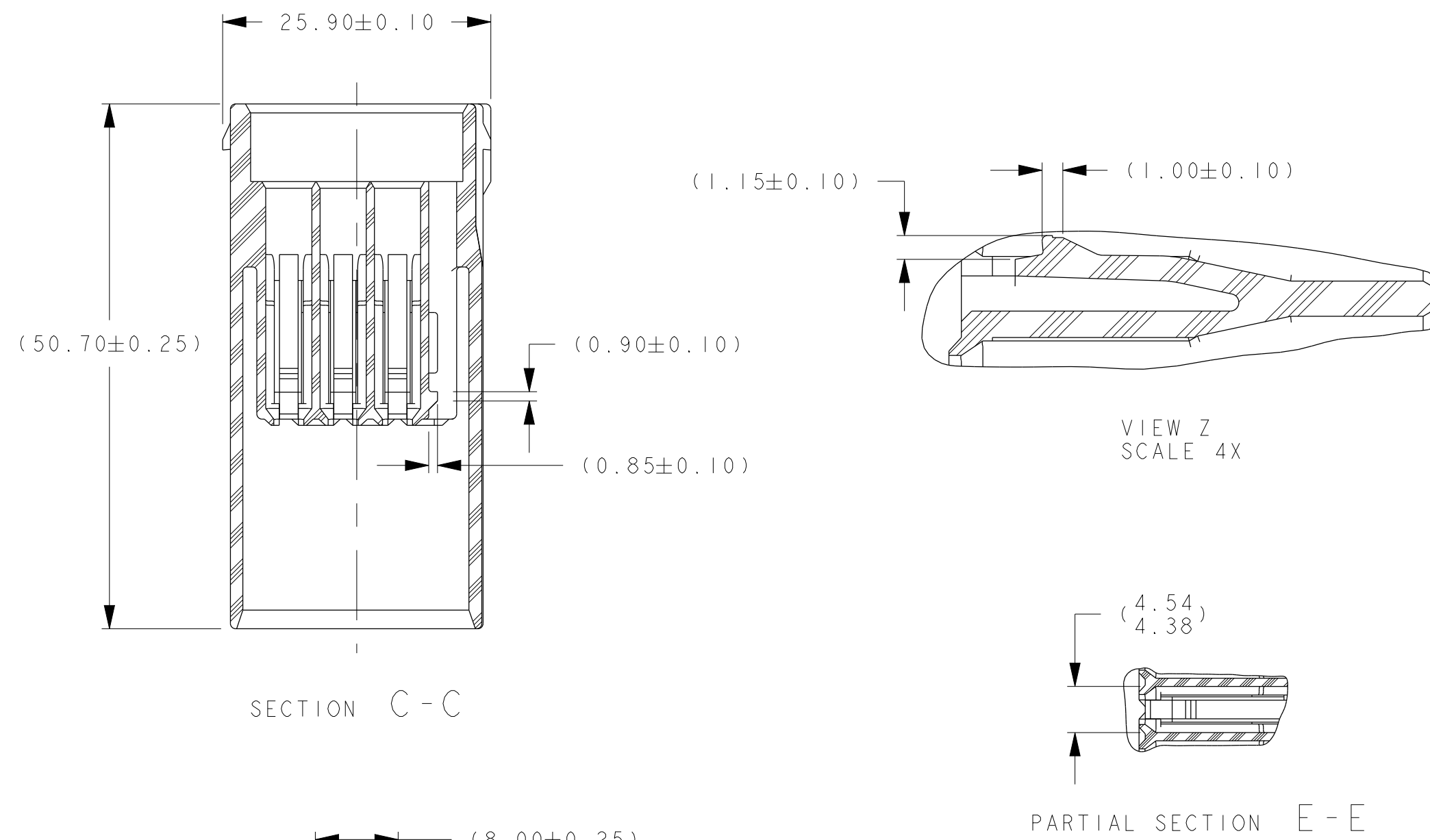
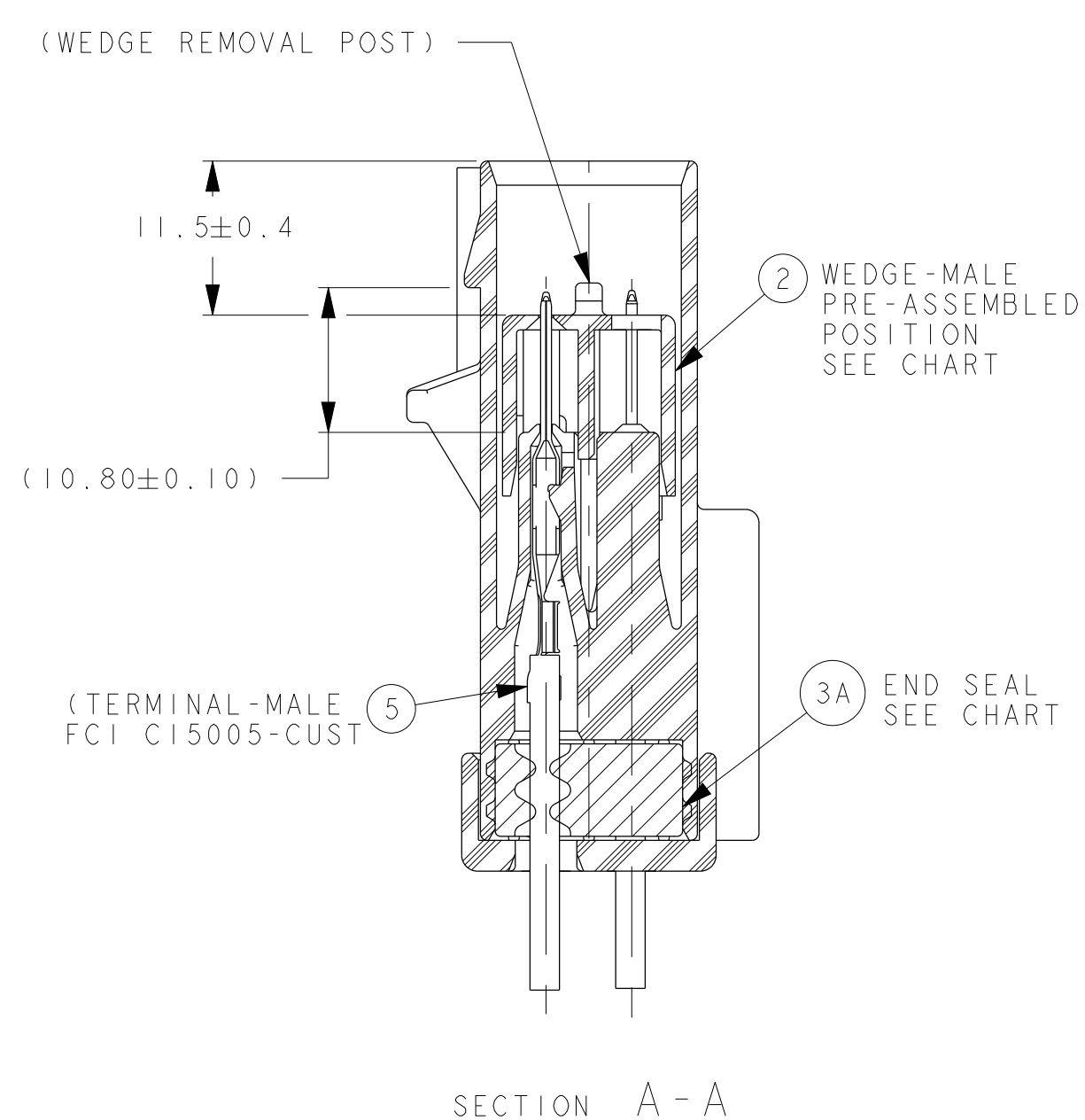


LAST 5 DIGITS OF 8 DIGIT P/N &
PART CHANGE LEVEL (PCL) OR
LAST 6 DIGITS OF 10 DIGIT OR
PDS NO. PART CHANGE LEVEL (PCL)
MFG. DAILY DATE CODE & ASSY
MACHINE NO. LETTERING MUST
BE LEGIBLE
OPTIONAL



SEALED ASSEMBLY VIEWS
SEE CHART



MATING PART NUMBER CHART

INDEX TYPE	COLOR	SEALED/UNSEALED	MALE ASSEMBLY PART NUMBERS	FEMALE ASSEMBLY PART NUMBER FOR REFERENCE ONLY
D	NATURAL	UNSEALED	54200607	C 04707335 54200603N N/A
		UNSEALED	54200607	C 04707335 54200603 C 04707316
		SEALED	54200615	C 04707331 54200611N N/A
		SEALED	54200615	C 04707331 54200611 C 04707312
		UNSEALED	54200606	C 04707334 54200602N N/A
		UNSEALED	54200606	C 04707334 54200602 C 04707315
C	DK GREY	UNSEALED	54200614	C 04707330 54200610N N/A
		SEALED	54200614	C 04707330 54200610 C 04707311
		UNSEALED	54200605	C 04707333 54200601N N/A
B	LT GREY	UNSEALED	54200605	C 04707333 54200604 C 04794232AA
		SEALED	54200613	C 04707329 54200609N N/A
		SEALED	54200613	C 04707329 54200609 C 04707310
A	BLACK	UNSEALED	54200604	C 04707332 54200600N N/A
		UNSEALED	54200604	C 04707332 54200600 C 04707313
		SEALED	54200612	C 04707328 54200626N N/A
		SEALED	54200612	C 04707328 54200626 C 56042583AA
		SEALED	54200612	C 04707328 54200608N N/A
		SEALED	54200612	C 04707328 54200608 C 04707309
		SEALED	54200663	C 04608908AA 54200608 C 04707309
		SEALED	54200661	C 04759912AA 54200660N N/A
		SEALED	54200661	C 04759912AA 54200660 C 04759914AA

ASSEMBLY PART NUMBERS

UNSEALED	SEALED	ITEM	FCI P/N	CHRYSLER P/N	PART NAME	MATERIAL	COLOR	
54200604	54200612	1	54200634	04707323	INSULATOR-MALE INDEX A	PA66GF	BLACK	
54200605	54200613	1	54200635	04707324	INSULATOR-MALE INDEX B	PA66GF	LT GRY	
54200606	54200614	1	54200636	04707325	INSULATOR-MALE INDEX C	PA66GF	DK GRY	
54200607	54200615	1	54200637	04707326	INSULATOR-MALE INDEX D	PA66GF	NATURAL	
54200608AA	54200616	2	54200647	04707327	WEDGE-MALE	PA66GF	RED	
54200609	54200617	3A	54200656	04707307	END SEAL MALE STANDARD	SILICONE	DK BLUE	
54200610	54200618	3A	54200658	N/A	END SEAL MALE HYBRID	SILICONE	LT BLUE	
54200611	54200619	3B	54200639	N/A	END SEAL-PLUG W/O HOLES	SILICONE	BRT ORANGE	
54200612	54200620	4	54200652	04707337	RETAINER	PA66GF	BLACK	
54200613	54200621	CONNECTOR ASSEMBLY TEMPERATURE CLASS PER SAE/USCAR-2 REV.5						
54200614	54200622	PART CHANGE LEVEL (PCL)						

- NOTES:
- 1 QUALITY ASSURANCE REQUIREMENTS PER CHRYSLER PS-7300: 1 DIMENSIONAL OR PROCESS PARAMETERS PERMISSIBLE
 - 2 ENGINEERING APPROVAL OF SUPPLIER SAMPLES IS REQUIRED PRIOR TO AUTHORIZATION OF PART PRODUCTION.
 - 3 CHANGES IN DESIGN COMPOSITION OR PROCESSING FROM THE PART PREVIOUSLY APPROVED FOR PART PRODUCTION REQUIRES PRIOR ENGINEERING APPROVAL
 - 4 ALL SEALED CONNECTOR APPLICATIONS MUST BE USED WITH THIN WALL X-LINK WIRE INSULATIONS PER MS-8288, MS-9502, ESB-MIL123-A, GMM15626 OR ISO 6722 EQUIVALENTS
 - A - ASSEMBLIES WITH END SEAL P/N 54200656 MUST BE USED WITH Ø 1.70 MIN. TO Ø 2.77 MAX. OD WIRES
 - B - ASSEMBLIES WITH END SEAL P/N 54200658 MUST BE USED FOR CIRCUITS 2 & 5 WITH Ø 3.07 TO Ø 4.09 AND 1, 2, 4 & 6 WITH Ø 1.70 TO Ø 2.77 INSULATION OD ONLY
 - 5 ALL NON-SEALED APPLICATIONS MAY BE USED WITH ANY WIRE INSULATION 22AWG TO 10AWG OR ISO EQUIVALENTS (EXCEPT AS NOTED) PROVIDED THAT A TERMINAL GRIP FOR THAT CORE/INSULATION COMBINATION IS SHOWN ON FCI C15005-CUST MALE TERMINAL DRAWING
 - NOTE: MAX. INSULATION CRIMP WIDTH = 4.50
 - MAX. INSULATION CRIMP HEIGHT = 4.50
 - MAX. INSULATION CRIMP DIA. = 4.09 (10 GA THIN WALL)
 - 6 USE WITH FOLLOWING APPLICABLE COMPONENTS WHEN NEEDED:
 - CAVITY PLUG FCI P/N 54200005 (CHRYSLER P/N 56038308)
 - DOUBLE X-MAS TREE CLIP CHRYSLER P/N 04707091
 - DOUBLE X-MAS TREE CLIP CHRYSLER P/N 04625797
 - 2-BOMM APEX MALE TERM PER C15005-CUST SYMMETRICAL ABOUT CENTERLINE FOR 180° ORIENTATION
 - 7 TEST METHOD PER PERFORMANCE SPEC SAE/USCAR-2 REV.3, CONNECTOR ENGAGE & DISENGAGE WITH FEMALE LATCH DEPRESSED FORCE NOT TO EXCEED 90N. FOR THIS SYSTEM
 - WEDGE SEATING FORCES - 125N MAX
 - X-MAS TREE CLIP INSERTION FORCES - 75N MAX
 - 8 SUPPLIER, MOLD & CAVITY I.D. SIGNIFIES TOOL OWNERSHIP. FOR REFERENCE
 - 9 ANNUAL QUALITY REQUIREMENTS:
 - IT IS PERMISSIBLE TO PERFORM CONTINUOUS CONFORMANCE PER FCI SPECIFICATION #80A-001 INSTEAD OF ANNUAL LAYOUT & ANNUAL PV REQUIREMENTS OF QS-9000 SECTION 2 & SAE/USCAR-2 REV.5
 - ALL NON-REFERENCE DIMENSIONS ARE REQUIRED
 - USE INDEX A, BLACK SEALED AND UNSEALED FOR ALL AFFECTED INSULATOR CAVITIES
 - CURRENT PRODUCTION TOOLING
 - POINT OF LAST RUN
 - 10 SERVICE TOOLING GUIDE INFORMATION PER APEX TRAINING MANUAL
 - MUST CONFORM TO THE FOLLOWING CHRYSLER/YNA STANDARDS:
 - SAE/USCAR-2 REV. 5
 - PS-7300 QUALITY ASSURANCE (CHRYSLER)
 - MS-9502 SEAL APPL. 150 °C
 - MS-8288 SEAL APPL. 125 °C
 - PS-9227 DATA EXCHANGE (CHRYSLER), (G009-7 YNA)
 - PS-10052 INFORMATION SECURITY (CHRYSLER)
 - 11 THIS DRAWING (H59014) REPLACES CHRYSLER DRAWING NUMBER 04707322 LEVEL "P" DATED 5-22-01. CHRYSLER DRAWING NUMBER IS FOR REFERENCE ONLY

12-00878 ALL REVISED & REDRAWN IN PDS. PART NUMBER CHARTS UPDATED AND NOTES REVISED SEE REV P2 FOR PREVIOUS CHANGES

REV	DATE	BY	CHKD	DESC
1				
2				
3				

PROPERTY OF CHRYSLER GROUP LLC. THIS DRAWING AND ALL OTHER INFORMATION CONTAINED HEREIN IS PROPRIETARY AND THE PROPERTY OF CHRYSLER GROUP LLC. IT IS NOT TO BE REPRODUCED OR TRANSMITTED IN ANY FORM OR BY ANY MEANS, ELECTRONIC OR MECHANICAL, INCLUDING PHOTOCOPYING, RECORDING, OR BY ANY INFORMATION STORAGE AND RETRIEVAL SYSTEM.

DATE: 11/20/01
DRAWN: J. H. H. (JHH)
CHECKED: J. H. H. (JHH)
ENGINEER: J. H. H. (JHH)
DESIGNER: J. H. H. (JHH)
PROJECT: 28MM APEX CONNECTOR SYSTEM

DRAWING NUMBER: H59014
SERIAL RELEASED

FCI SUPPLIER CODE: 52772 OR 52772H