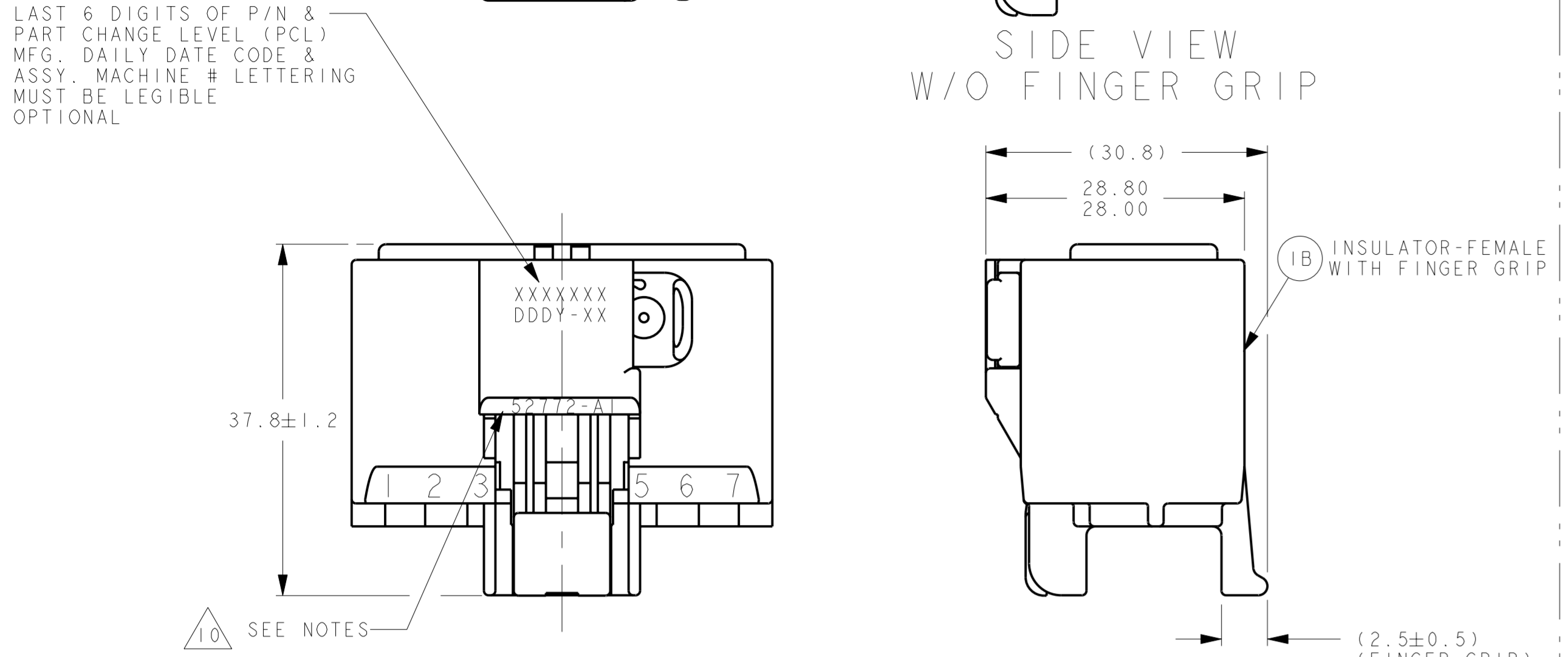
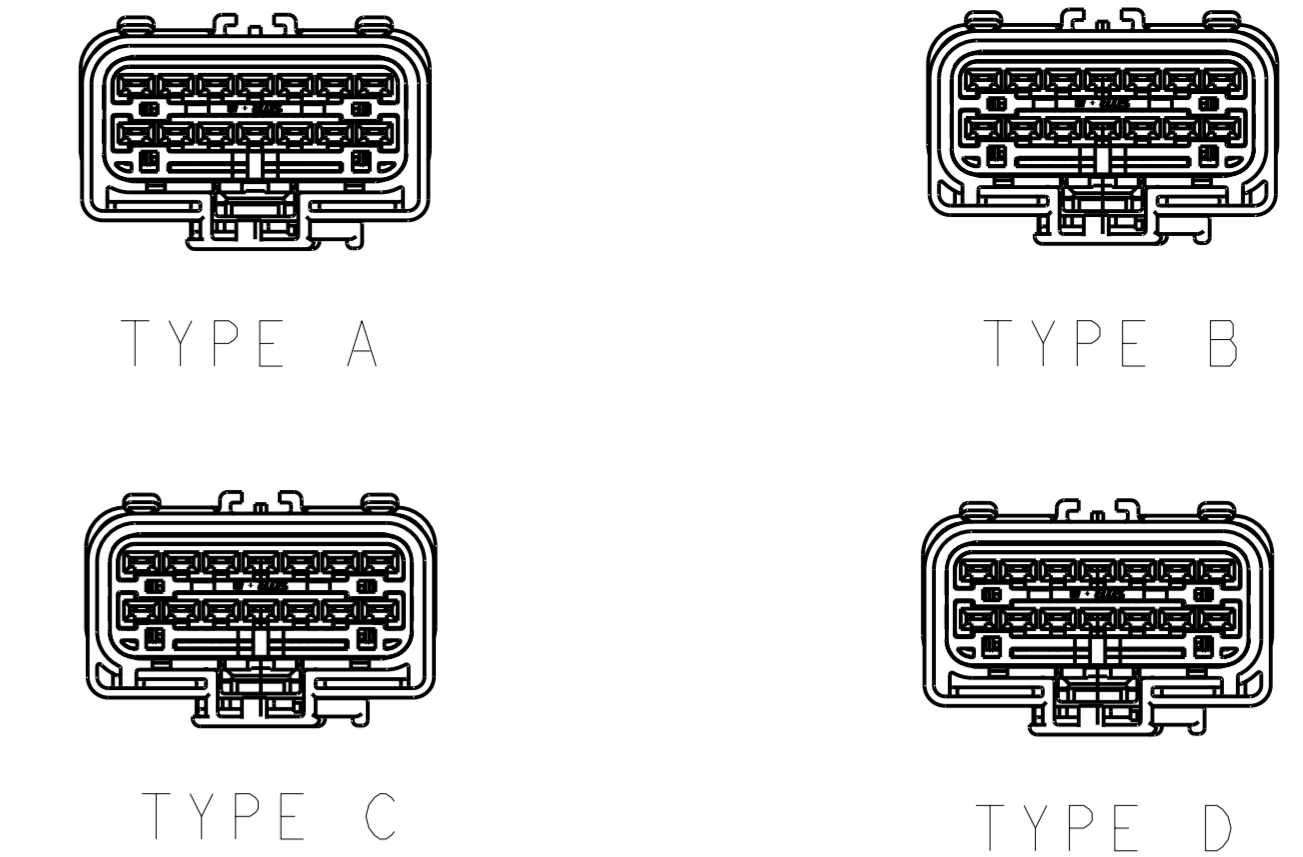
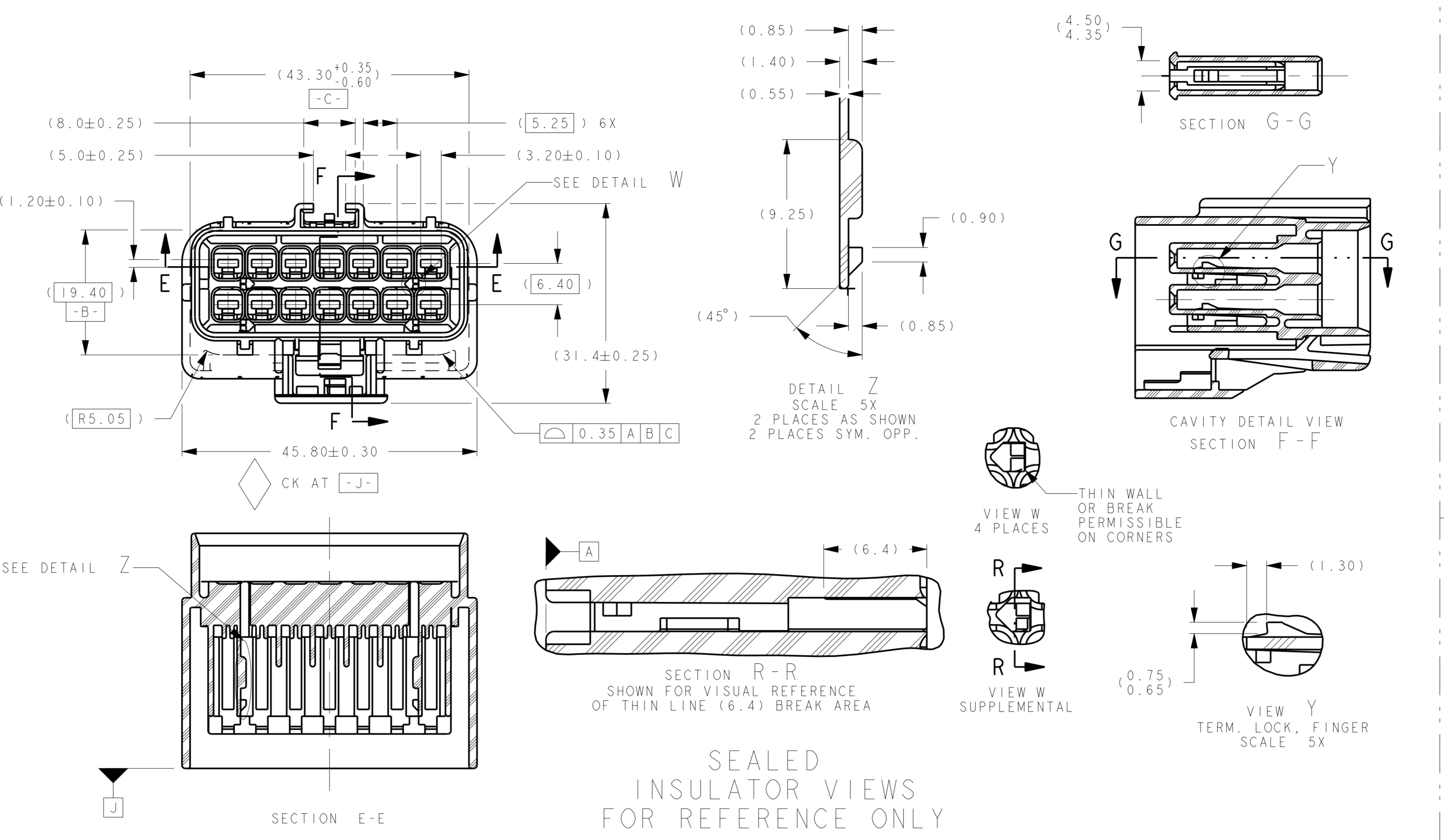


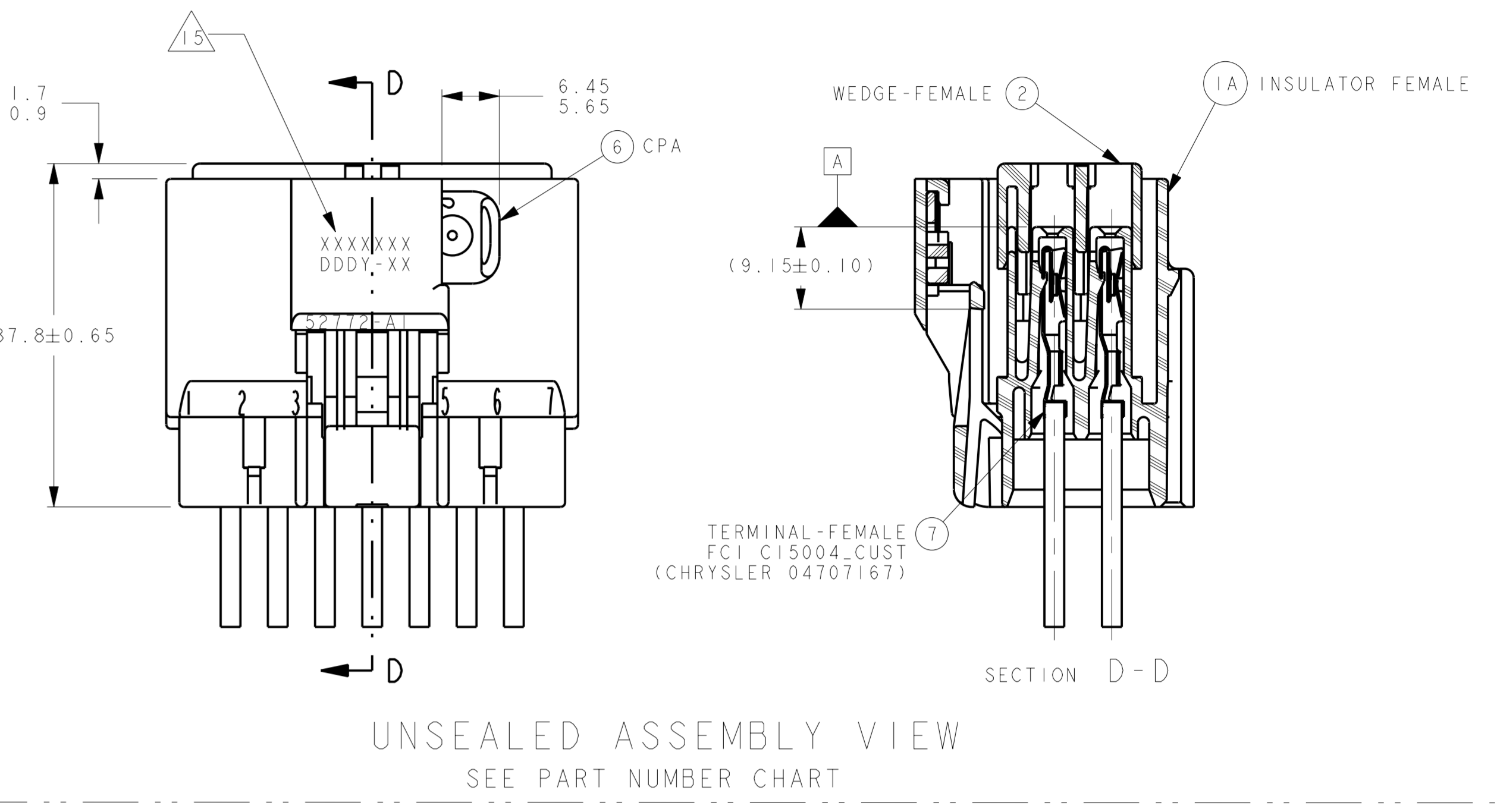
SIDE VIEW W/O FINGER GRIP



SEALED INSULATOR VIEWS FOR REFERENCE ONLY

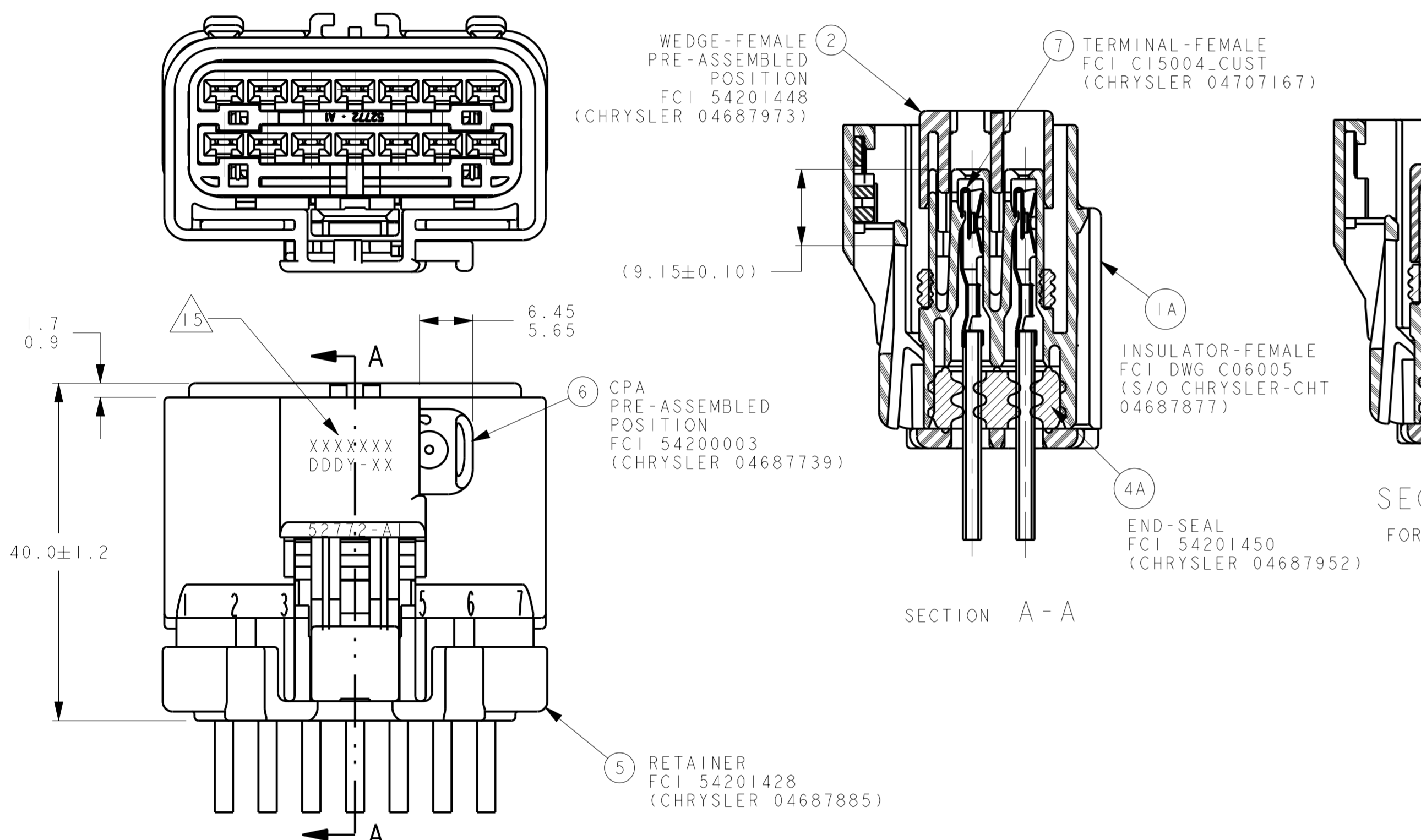


POLARIZATION OPTIONS FULL SIZE SHOWN WITH CPA



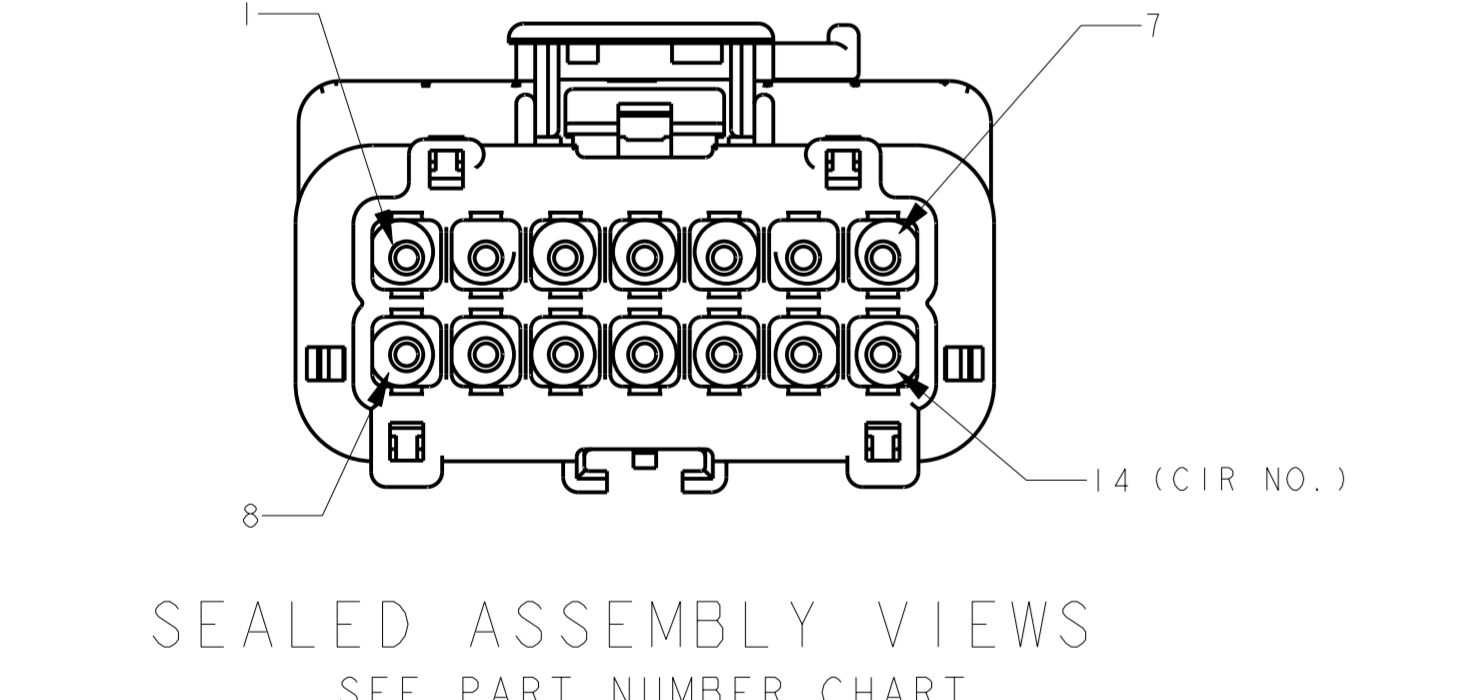
UNSEALED ASSEMBLY VIEW SEE PART NUMBER CHART

UNSEALED ASSEMBLY VIEWS (SKIRTLESS)



SEALED ASSEMBLY VIEW (PARTIALLY SEALED) SHIPPED WITHOUT END SEAL AND RETAINER

- NOTES:
1 QUALITY ASSURANCE REQUIREMENTS PER CHRYSLER PS-7300-1 SPC DATA REQUIRED
2 ENGINEERING APPROVAL OF SUPPLIER SAMPLES IS REQUIRED PRIOR TO AUTHORIZATION OF PART PRODUCTION
3 CHANGES IN DESIGN COMPOSITION OR PROCESSING FROM THE PART PREVIOUSLY APPROVED FOR PART PRODUCTION REQUIRES PRIOR ENGINEERING APPROVAL
4 WIRING FABRICATORS MUST PURCHASE FROM SOURCES SHOWN
5 ALL THE SEALED APPLICATIONS WITH 54201450 END SEAL MUST BE USED WITH CHRYSLER WIRE SPEC. MS-8288 OR MS-9502 THIN WALL X-LINK 20, 18, 16, 14 & 12 GAGE WIRES ONLY UNLESS OTHERWISE SPECIFIED (INSULATIONS Ø1.70 MIN TO Ø3.35 MAX.) ISO THIN WALL EQUIVALENTS ALLOWED
6 P/N'S WITH C855900 END SEAL MUST BE USED WITH WIRE INSULATION RANGE FROM Ø1.90MIN TO 3.70MAX (18AWG TO 12AWG OR 1mm² TO 4mm² ISO THIN WALL)
7 ALL NON-SEALED APPLICATIONS MAY BE USED WITH ANY WIRE INSULATION 22 GAGE THRU 10 GAGE & ISO THIN WALL EQUIVALENTS PROVIDING THAT A TERMINAL GRIP FOR THAT CORE / INSULATION COMBINATION IS SHOWN ON THE FEMALE TERMINAL DRAWING
8 MAX. INSULATION CRIMP WIDTH = 4.50
MAX. INSULATION CRIMP HEIGHT = 4.50
MAX. INSULATION DIA. ± 4.09 (10 GA THIN WALL)
9 USE WITH CAVITY PLUG P/N 54200005 (C) 56038308 ON SKIRTED PARTS ONLY WHEN REQUIRED
USE WITH DOUBLE X-MAS TREE CLIP P/N (C) 04707091 WHEN REQUIRED
USE WITH DOUBLE X-MAS TREE CLIP P/N (C) 04625797 WHEN REQUIRED
USE WITH 2.8MM APEX FEMALE TERMINAL PER C15004-CUST SYMMETRICAL ABOUT CENTERLINE FOR 180° ORIENTATION
8 DIRECT CONNECT DRAWING NO. H36014 (CHRYSLER 04707029)
9 TEST METHOD PER CHRYSLER PERFORMANCE SPEC# SAE/USCAR-2 REV 5. CONNECTOR ENGAGE & DISENGAGE WITH LATCH DEPRESSED FORCE NOT TO EXCEED 142N FOR THIS SYSTEM.
PRESSURE 3 PSI (22 KPA) PER PF-752(1)
CPA SEATING FORCES - 40N MAX
WEDGE SEATING FORCES - 142N MAX
X-MAS TREE CLIP INSERTION FORCES - 75N MAX
10 SUPPLIER, MOLD & CAVITY I.D. SINGIFIES TOOL OWNERSHIP, FOR REFERENCE
11 ANNUAL QUALITY REQUIREMENTS: IT IS PERMISSIBLE TO PERFORM CONTINUOUS CONFORMANCE PER FC1 SPECIFICATION #QA0-001 INSTEAD OF ANNUAL LAYOUT & ANNUAL P/V REQUIREMENTS OF OS-9000 SECTION 2 & SAE/USCAR-2 REV 5
ALL NON-REFERENCE DIMENSIONS ARE REQUIRED
- USE INDEX A, BLACK SEALED AND UNSEALED FOR ALL AFFECTED INSULATOR CAVITIES
- CURRENT PRODUCTION TOOLING
- POINT OF LAST RUN



SEALED ASSEMBLY VIEWS SEE PART NUMBER CHART

ASSEMBLY PART NUMBERS table with columns for UNSEALED and SEALED configurations (W/O CPA, W/CPA).

MATING PART NUMBER CHART table showing combinations of Index Type, Color, and Part Number for various configurations.

ITEM, FC1 P/N, CHRYSLER P/N, PART NAME, MATERIAL table listing specific components and their specifications.

- 12 SERVICE TOOLING GUIDE INFORMATION PER APEX TRAINING MANUAL
13 MUST CONFORM TO THE FOLLOWING CHRYSLER/YNA STANDARDS:
SAE/USCAR-2 REV-5 EXCEPT AS NOTED ABOVE
PS-7300 QUALITY ASSURANCE (CHRYSLER)
PS-4480 CER-4 (CHRYSLER) PART 1, D, 1 (G-009-2 YNA)
PS-9065 REGRIND (CHRYSLER), (G-009-3 YNA)
PS-9227 DATA EXCHANGE (CHRYSLER), (G-009-7 YNA)
PS-10052 INFORMATION SECURITY (CHRYSLER)
14 INDICATES END SEAL 54201450 OR C855900 & RETAINER 54201428 OR HINGE TYPE PROVIDED LOOSE PIECE AND INSTALLED AT WIRE HARNESS ASSEMBLY, SEE HARNESS ASSEMBLY FOR HINGE RETAINER P/N

Revision table with columns for Item, Date, Description, and Revision number, along with other metadata.