

Ultramas



Detailed product information can be found on www.bopla.de



- 5 basic sizes
- Aluminium or plastic front/rear panels
- Horizontal or vertical insertion
- Different heights by use of extension sets
- Version with or without air vents
- 19" internal assemblies on request
- Flat wall mounting possible
- Comprehensive range of accessories

Colour:

Light grey, similar to RAL 7035; screw covers, brackets and feet agate grey, similar to RAL 7038; special colours on request

Protection class:

Plain: IP 40/DIN EN 60529;
with air vents: IP 30/DIN EN 60529

Enclosure material:

ABS; for details see Technical Information

ABS desktop enclosure for universal use, possibility of fitting 19" components



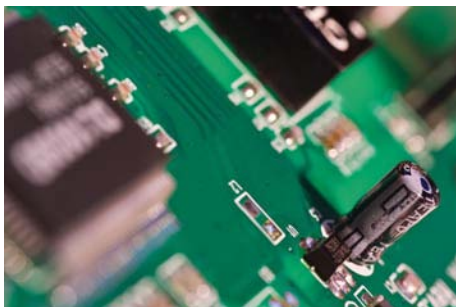
The screw covers which are part of the standard delivery can be plugged in for horizontal or vertical use, as required.



The enclosure height can be increased with optional extension sets by 15.24 mm (3 HP) or 45.72 mm (9 HP), as required.



Additional grooves for the insertion of circuit boards and mounting panels are located on the inner enclosure side (only with 52011).



The boss dimensions conform to Euro card and other formats.



19" internal constructions for 3 and 6 U in widths 9, 12, 18, 21, 27, 30 and 36 HP are available on request.



As an option, two or more enclosures can be joined by means of connection elements.



The screw covers can be replaced with wall flanges, tip-up feet or collapsible feet (all available as accessories).



The enclosure fronts can be removed separately, which ensures efficient mounting of operating elements.

Ultramas UM 3...09 (L) | Enclosures



Enclosure, plain

| Model | Order no. | A | B | C | b1 | U | HP |
|----------|-----------|-------|-------|------|-------|---|----|
| UM 32009 | 55320000 | 157,5 | 198,9 | 62,2 | 187,3 | 3 | 9 |
| UM 32609 | 55326000 | 157,5 | 258,9 | 62,2 | 247,3 | 3 | 9 |

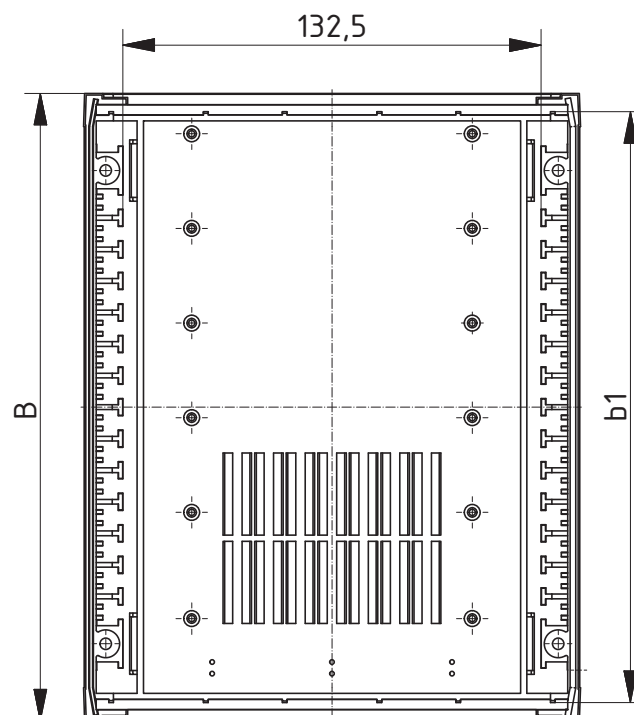
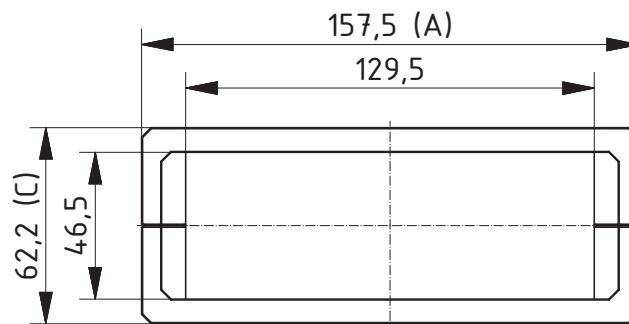
Scope of delivery: 2 half-shells, 8 covers, 4 rubber feet, 4 screws



Enclosure with air vents in the lid and base

| Model | Order no. | A | B | C | b1 | U | HP |
|------------|-----------|-------|-------|------|-------|---|----|
| UM 32009 L | 55320010 | 157,5 | 198,9 | 62,2 | 187,3 | 3 | 9 |
| UM 32609 L | 55326010 | 157,5 | 258,9 | 62,2 | 247,3 | 3 | 9 |

Scope of delivery: 2 half-shells, 8 covers, 4 rubber feet, 4 screws



Z-2803197

* = Available on request

Ultramas UM 52011 (L) | Enclosures

Enclosure, plain

| Model | Order no. | A | B | C | U | HP |
|----------|-----------|-------|-------|------|-----|----|
| UM 52011 | 55520000 | 224,2 | 198,9 | 72,4 | 4,5 | 11 |

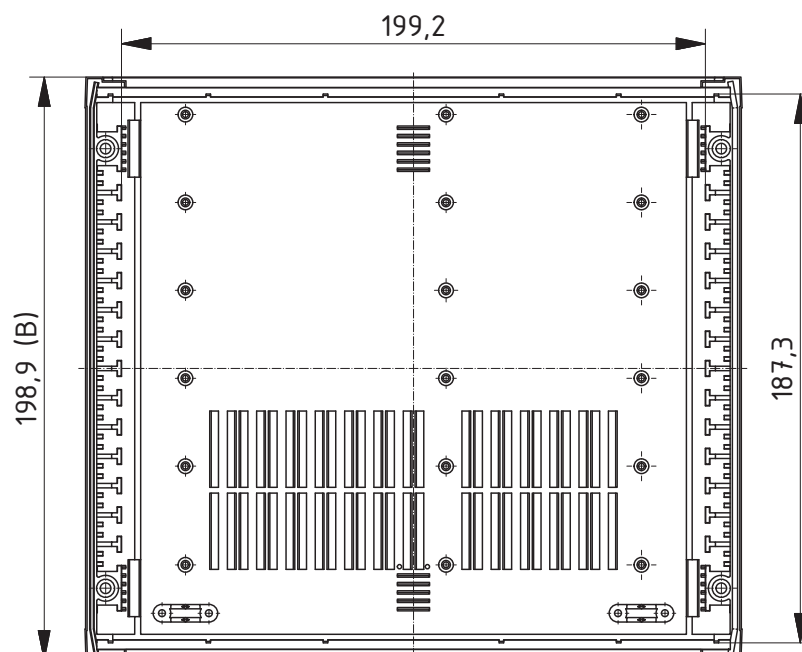
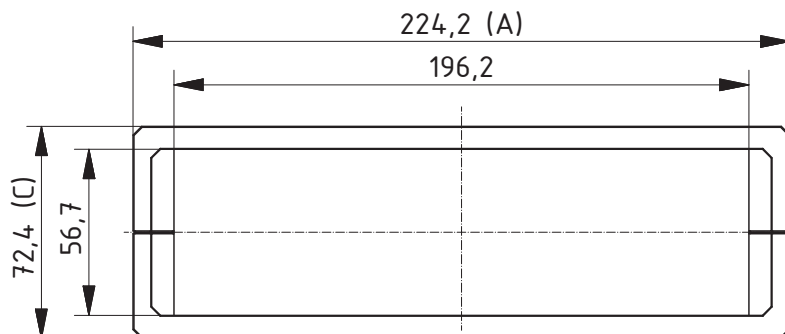
Scope of delivery: 2 half-shells, 8 covers, 4 rubber feet, 4 screws



Enclosure with air vents in the lid and base

| Model | Order no. | A | B | C | U | HP |
|------------|-----------|-------|-------|------|-----|----|
| UM 52011 L | 55520020 | 224,2 | 198,9 | 72,4 | 4,5 | 11 |

Scope of delivery: 2 half-shells, 8 covers, 4 rubber feet, 4 screws



Z-2803198

For accessories, please see the end of the chapter

Ultramas UM 6..09 (L) | Enclosures



Enclosure, plain

| Model | Order no. | A | B | C | b1 | U | HP |
|----------|-----------|-------|-------|------|-------|---|----|
| UM 62009 | 55620000 | 290,9 | 198,9 | 62,2 | 187,3 | 6 | 9 |
| UM 62609 | 55626000 | 290,9 | 258,9 | 62,2 | 247,3 | 6 | 9 |

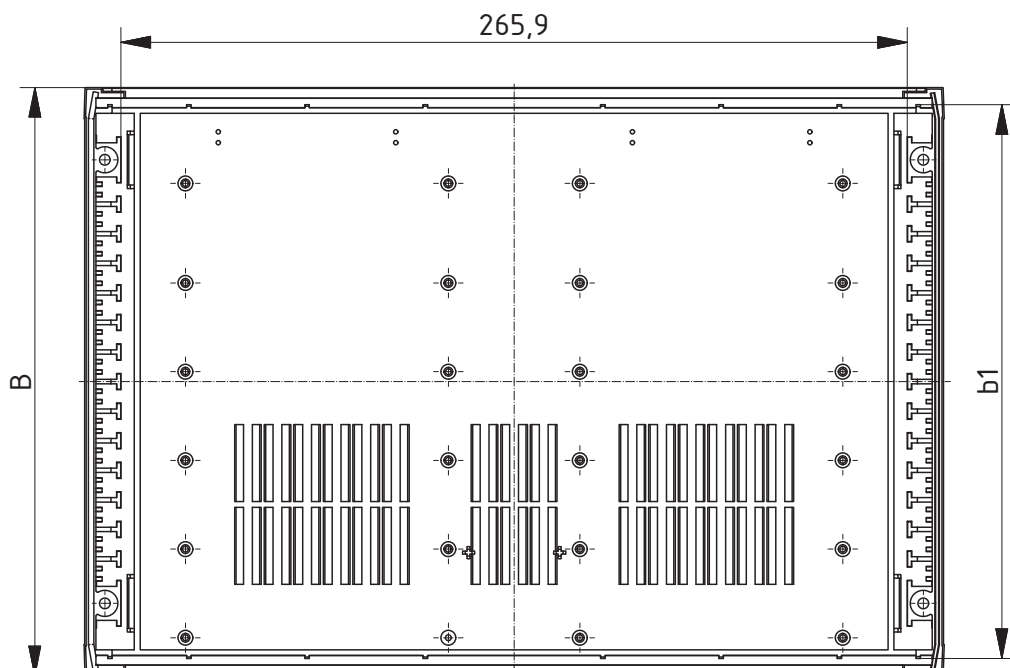
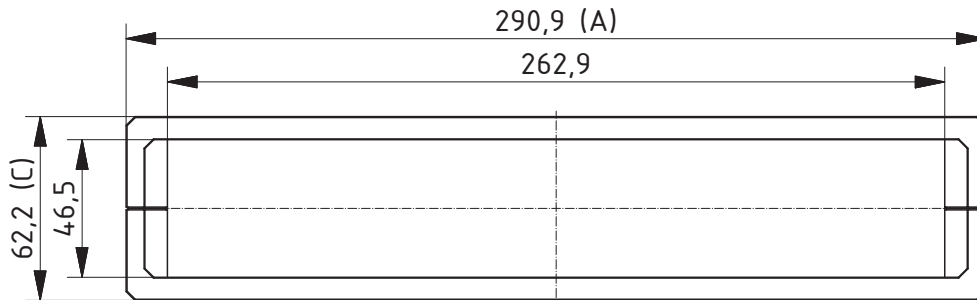
Scope of delivery: 2 half-shells, 8 covers, 4 rubber feet, 4 screws



Enclosure with air vents in the lid and base

| Model | Order no. | A | B | C | b1 | U | HP |
|------------|-----------|-------|-------|------|-------|---|----|
| UM 62009 L | 55620010 | 290,9 | 198,9 | 62,2 | 187,3 | 6 | 9 |
| UM 62609 L | 55626010 | 290,9 | 258,9 | 62,2 | 247,3 | 6 | 9 |

Scope of delivery: 2 half-shells, 8 covers, 4 rubber feet, 4 screws



Z-2803199

Ultramas | Accessories

Extension set, plain, with air vents (L), 3 HP / 9 HP

| Model | Order no. | Note |
|------------|-----------|---|
| AB 02003 | 56020500 | 3 HP; For UM 32009(L), 62009(L), 52011(L)** |
| AB 02009 | 56020000 | 9 HP; For UM 32009(L), 52011(L), 62009(L) |
| AB 02009 L | 56020010 | 9 HP; For UM 32009(L), 52011(L), 62009(L) |
| AB 02603 | 56026500 | 3 HP; For UM 32609(L), 62609(L) |
| AB 02609 | 56026000 | 9 HP; For UM 32609(L), 62609(L) |
| AB 02609 L | 56026010 | 9 HP; For UM 32609(L), 62609(L) |



Scope of delivery: 2 extension units, fitting material

Note: ** AB 02003 can also be used for UM 52011(L), but please order 4 SHR-Z-M3x40 screws, order no. 59005541, for each extension set.

Front panel FP(K) 50014 available on request.

Selection table of extension sets and front panels

| Encl. height | Number of extension sets | | Front panels to be used |
|--------------|--------------------------|--------------|--------------------------|
| | AB 02__03 | AB 02__09(L) | |
| 46.5 | - | - | FP(K) 30009, FP(K) 60009 |
| 56.7 | - | - | FP(K) 50011 |
| 61.7 | 1 | - | FP(K) 30012, FP(K) 60012 |
| 92.2 | - | 1 | FP(K) 30018, FP(K) 60018 |
| 102.4 | - | 1 | FP(K) 50020 |
| 107.5 | 1 | 1 | FP(K) 30021, FP(K) 60021 |
| 138.0 | - | 2 | FP(K) 30027, FP(K) 60027 |
| 148.1 | - | 2 | FP(K) 50029 |
| 153.2 | 1 | 2 | FP(K) 30030, FP(K) 60030 |
| 183.7 | - | 3 | FP(K) 30036, FP(K) 60036 |

Front panels, 2 mm, natural-coloured anodised aluminium

| Model | Order no. | Note |
|----------|-----------|---|
| FP 30009 | 56030900 | For UM 3..09 |
| FP 30012 | 56031200 | For UM 3..09 + 1x AB 02.03 |
| FP 30018 | 56031800 | For UM 3..09 + 1x AB 02.09 (L) and for UMP 32018 (FP) |
| FP 30021 | 56032100 | For UM 3..09 + 1x AB 02.03 + 1x AB 02.09 (L) |
| FP 30027 | 56032700 | For UM 3..09 + 2x AB 02.09 (L) |
| FP 30030 | 56033000* | For UM 3..09 + 1x AB 02.03 + 2x AB 02.09 (L) |
| FP 30036 | 56033600 | For UM 3..09 +3x AB 02.09 (L) |
| FP 50011 | 56051100 | For UM 52011 |
| FP 50020 | 56052000 | For UM 52011 + 1x AB 02009 (L) |
| FP 50029 | 56052900 | For UM 52011 + 2x AB 02009 (L) |
| FP 60009 | 56060900 | For UM 6..09 |
| FP 60012 | 56061200 | For UM 6..09 + 1x AB 02.03 |
| FP 60018 | 56061800 | For UM 6..09 + 1x AB 02.09 (L) and for UMP 62018 (FP) |
| FP 60021 | 56062100 | For UM 6..09 + 1x AB 02.03 + 1x AB 02.09 (L) |
| FP 60027 | 56062700 | For UM 6..09 + 2x AB 02.09 (L) |
| FP 60030 | 56063000 | For UM 6..09 + 1x AB 02.03 + 2x AB 02.09 (L) |
| FP 60036 | 56063600 | For UM 6..09 + 3x AB 02.09 (L) |



Scope of delivery: 1 front panel

Ultramas | Accessories



Front panels, ABS, light grey, similar to RAL 7035, embossed on one side

| Model | Order no. | Note |
|-----------|-----------|---|
| FPK 30009 | 56030910 | For UM 3..09 |
| FPK 30012 | 56031210 | For UM 3..09 + 1x AB 02.03 |
| FPK 30018 | 56031810 | For UM 3..09 + 1x AB 02.09 (L) and for UMP 32018 (FP) |
| FPK 30021 | 56032110 | For UM 3..09 + 1x AB 02.03 + 1x AB 02.09 (L) |
| FPK 30027 | 56032710 | For UM 3..09 + 2x AB 02.09 (L) |
| FPK 30030 | 56033010* | For UM 3..09 + 1x AB 02.03 + 2x AB 02.09 (L) |
| FPK 30036 | 56033610 | For UM 3..09 +3x AB 02.09 (L) |
| FPK 50011 | 56051110 | For UM 52011 |
| FPK 50020 | 56052010 | For UM 52011 + 1x AB 02009 (L) |
| FPK 50029 | 56052910 | For UM 52011 + 2x AB 02009 (L) |
| FPK 60009 | 56060910 | For UM 6..09 |
| FPK 60012 | 56061210 | For UM 6..09 + 1x AB 02.03 |
| FPK 60018 | 56061810 | For UM 6..09 + 1x AB 02.09 (L) and for UMP 62018 (FP) |
| FPK 60021 | 56062110 | For UM 6..09 + 1x AB 02.03 + 1x AB 02.09 (L) |
| FPK 60027 | 56062710 | For UM 6..09 + 2x AB 02.09 (L) |
| FPK 60030 | 56063010 | For UM 6..09 + 1x AB 02.03 + 2x AB 02.09 (L) |
| FPK 60036 | 56063610 | For UM 6..09 + 3x AB 02.09 (L) |

Scope of delivery: 1 front panel



Tip-up foot set

| Model | Order no. |
|-------|-----------|
| UM-AS | 56012000 |

Scope of delivery: 4 fixed feet.

Note: For horizontal or vertical use, as required.



Tip-up foot set, collapsible

| Model | Order no. |
|--------|-----------|
| UM-ASK | 56012100 |

Scope of delivery: Set-up foot set (2 fixed and 2 hinged feet), fitting screws.

Note: For horizontal or vertical use, as required.



Wall brackets

| Model | Order no. |
|--------|-----------|
| UM-WLH | 56002000 |

Scope of delivery: 4 wall brackets

Note: The wall brackets can be used to fit the enclosure flat against the wall. Fitting is by means of insertion of the intermediate piece and screwing-on of the bracket. This does not affect the enclosure screwing system.