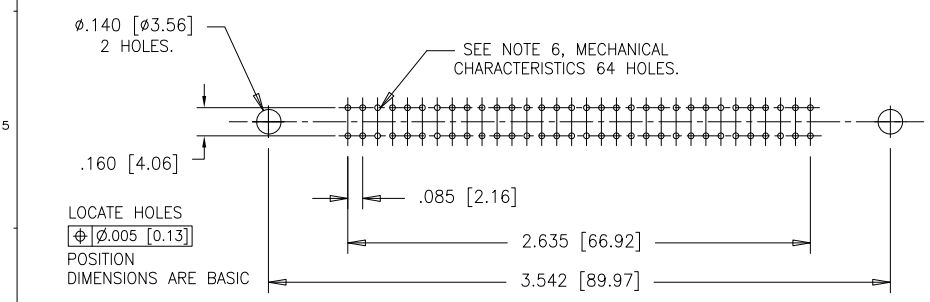
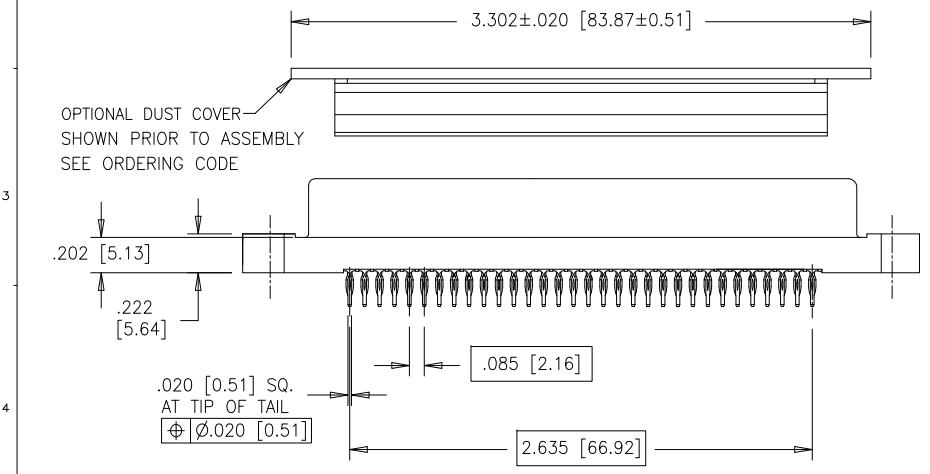
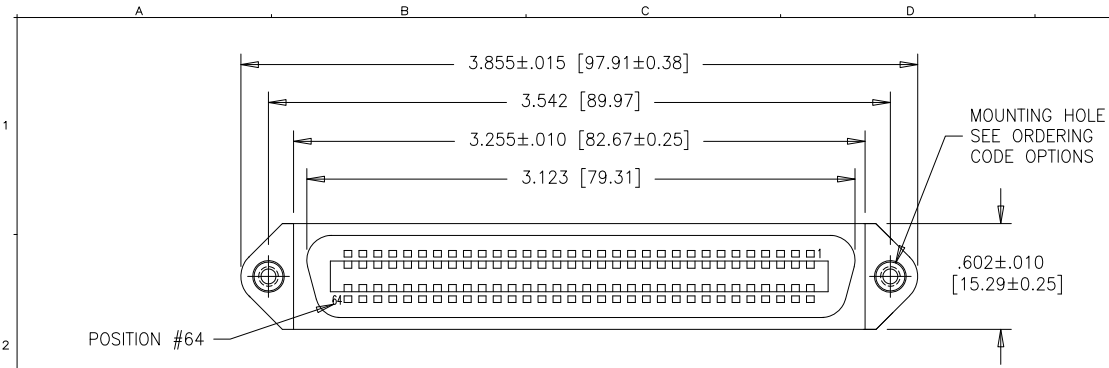


REVISIONS			
REV	ECN, ERN NO.	DATE	APPRD.
G	PRODUCT DRAWING (EAR 13685)	APR30/10	K.L.
H	PRODUCT DRAWING (EAR 14143)	DEC03/12	K.L.

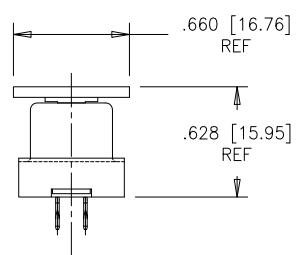
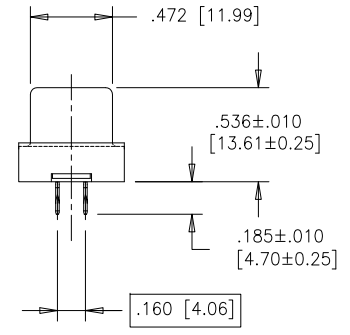
ORDERING CODE  
 AMPHENOL PART NUMBER: 57TE-29640-XOX



MOUNTING OPTION \_\_\_\_\_ DUST COVER OPTION \_\_\_\_\_  
 2 = .125 [3.128] DIA. HOLES 0 = WITHOUT DUST COVER OPTION  
 3 = M3 X 0.5 THREADED INSERTS 6 = WITH DUST COVER (NOTE 5)  
 4 = #4-40 UNC THREADED INSERTS



RECOMMENDED P.C.B. LAYOUT



END VIEW WITH  
 DUST COVER IN POSITION  
 SEE ORDERING CODE

MECHANICAL CHARACTERISTICS:

1. MATERIALS: ALL MATERIALS ARE RoHS COMPLIANT PER EU DIRECTIVE 2011/65/EU AND AMENDMENTS.
2. CONTACTS: PHOSPHOR BRONZE PLATED WITH 30µ [0.76 MICRONS] SELECTIVELY PLATED GOLD OVER NICKEL ON THE MATING AREA AND MATTE TIN PLATED TAILS.
3. HOUSING: THERMOPLASTIC, POLYESTER, GLASS REINFORCED, UL 94V-0 FLAMMABILITY RATING, COLOUR: BLACK
4. THREADED INSERTS: COPPER ALLOY, MATTE TIN PLATED
5. DUST COVER: POLYETHYLENE, NATURAL OR BLACK COLOUR, FLAMMABILITY RATING UL 94V-0 (CONSULT WITH AMPHENOL REGARDING AVAILABILITY)
6. CIRCUIT BOARD HOLES: DRILL HOLES .0394±.0010 [1.00±0.03] DIAMETER & PLATE TIN IMMERSION OVER .001 [0.025] MINIMUM COPPER FOR A FINISHED HOLE .035±.002 [0.89±0.05] DIAMETER IN A .090 [2.29] MINIMUM THICK PC BOARD.
7. TOLERANCE UNLESS INDICATED OTHERWISE: ±.005 [0.13]

ELECTRICAL CHARACTERISTICS:

CONTACT CURRENT RATING: 3 AMPS  
 DIELECTRIC WITHSTANDING VOLTAGE: 1200 VAC RMS  
 INSULATION RESISTANCE : 5000 MEGOHM MIN. INITIAL  
 CONTACT RESISTANCE: 6 MILLIOHMS MAX.  
 OPERATING TEMP: -40° C TO 105° C

THIS DOCUMENT CONTAINS PROPRIETARY INFORMATION AND SUCH INFORMATION MAY NOT BE DISCLOSED TO OTHERS FOR ANY PURPOSE OR USED FOR MANUFACTURING PURPOSES WITHOUT WRITTEN PERMISSION FROM AMPHENOL CANADA CORP.

DRAWN	A.CHAN	DATE	JUN24/09	Amphenol Canada Corp	
DESIGNED					
CHECKED	K.LAMBIE	DATE	JUN24/09	57TE SERIES MICRO-RIBBON RECEPTACLE, 64 SIZE, PRESS FIT CONTACTS, .160 [4.06] ROW SPACING, MOUNTING & DUST COVER OPTIONS, RoHS COMPLIANT	
I. E. APPRD.					
Q. A. APPRD.					
DWG. APPRD.					
ENG. REL. NO.		DWG	DRAWING NO.		REV.
REF.	EAR 13548	C	P-57TE-29640-XOX		H
DIMENSIONS ARE IN INCHES		CODE ID. NO.	03554	SCALE	2/1
		WT.		SURF.	
				SHEET 1 OF 1	