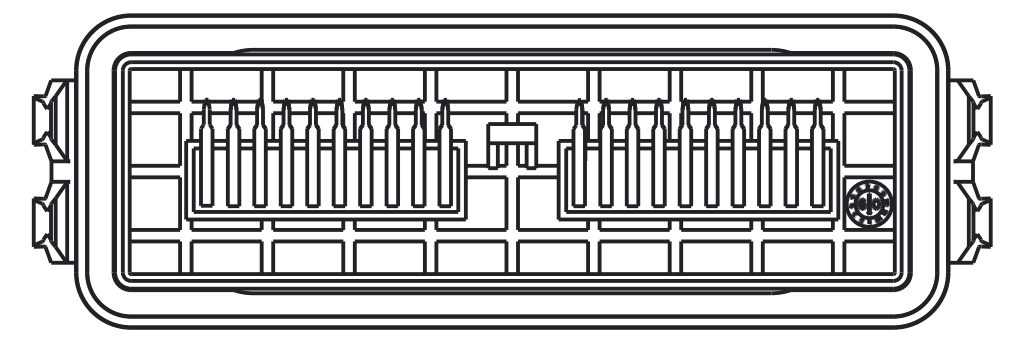
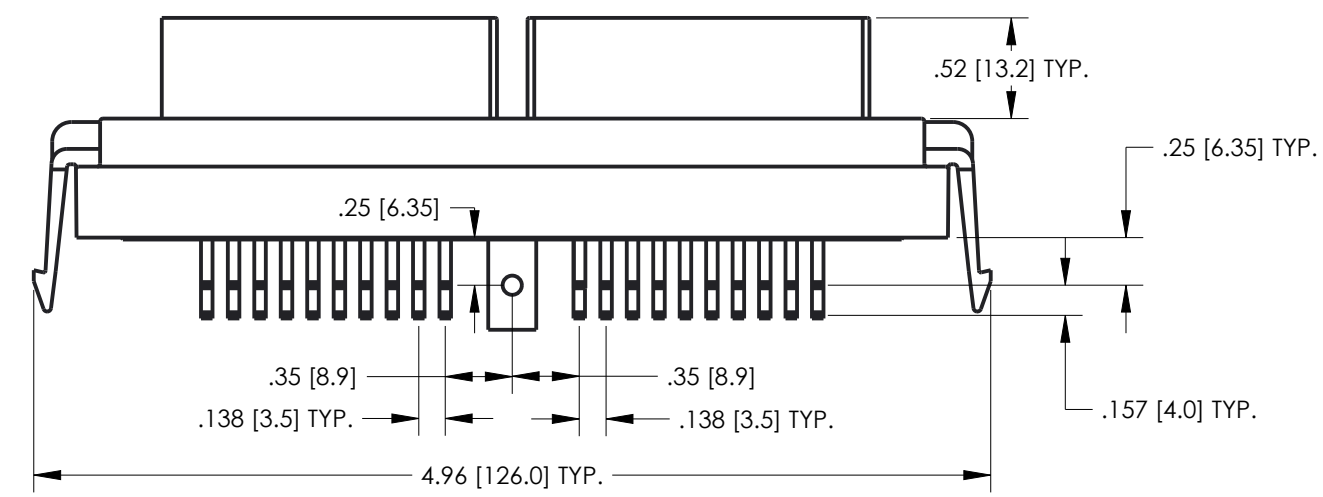
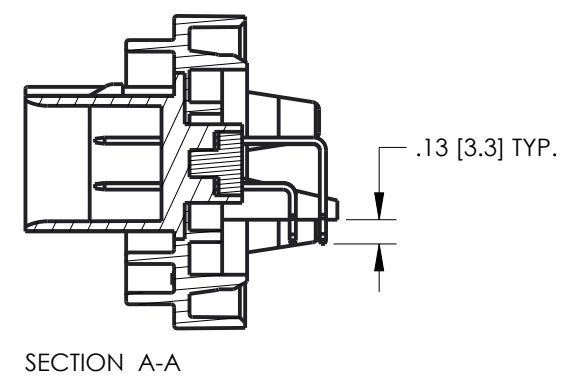
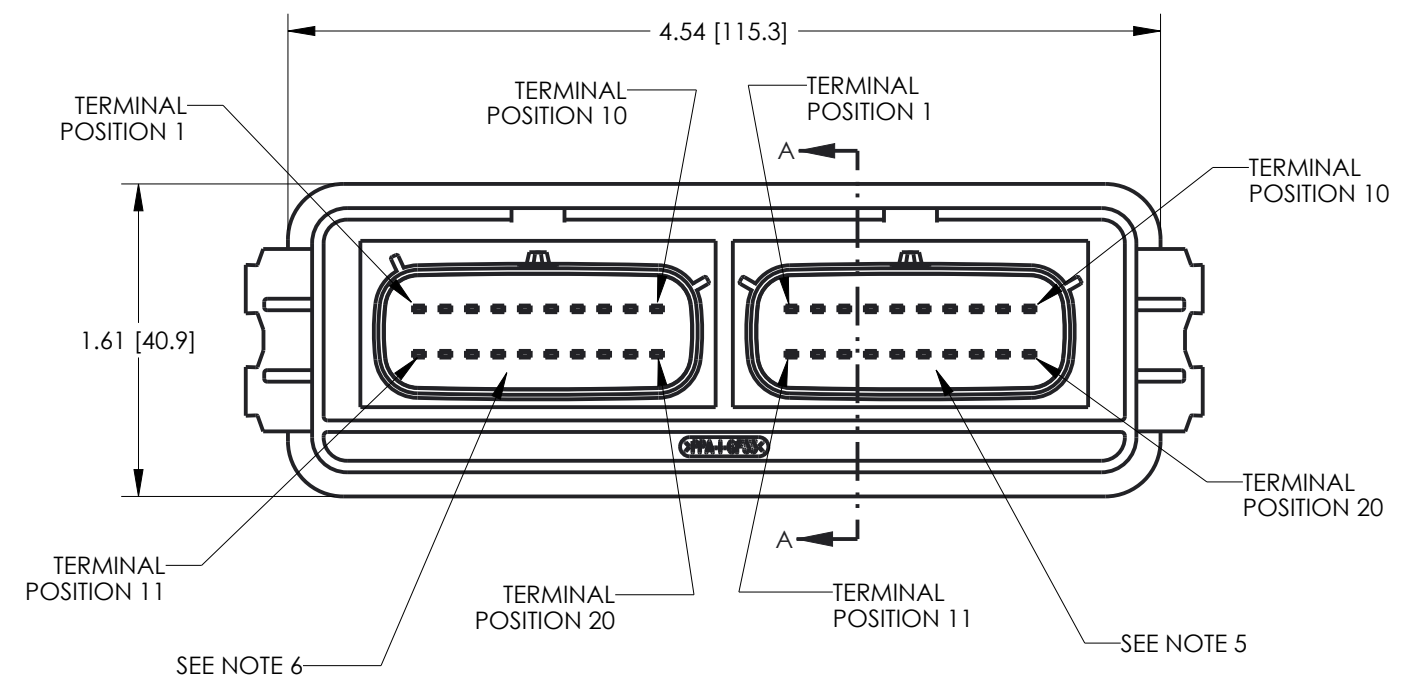


DRAWING REVISIONS (RELEASE DATE ON FILE)			
REV	DOCUMENT	APP	APPROVAL DATE
B	CO 3274	KR	7/18/16

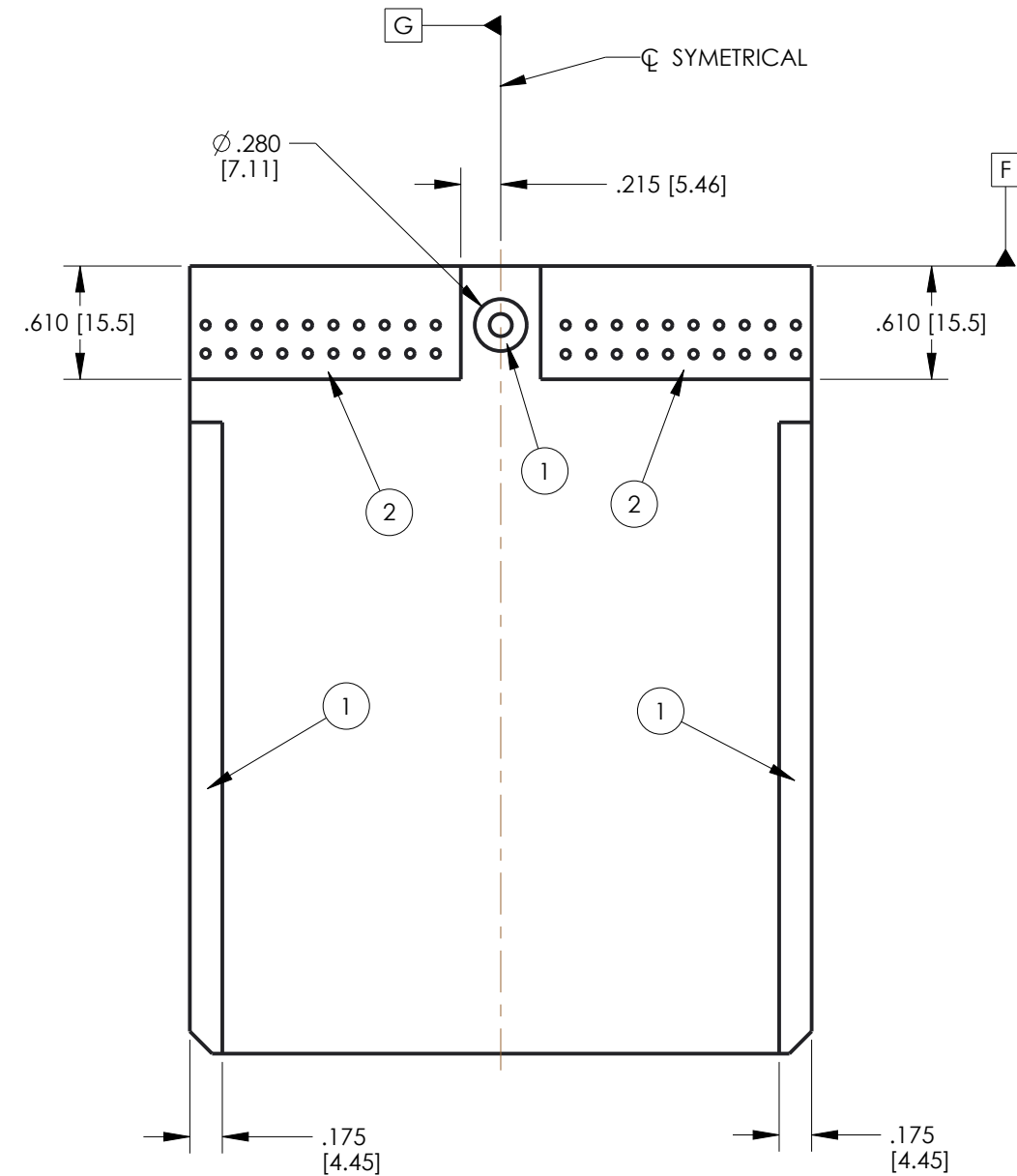
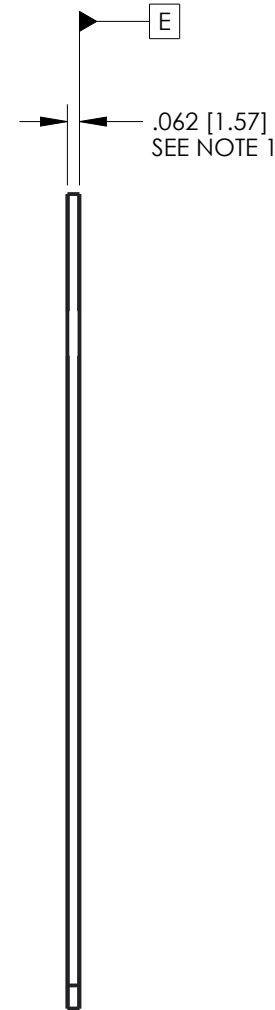
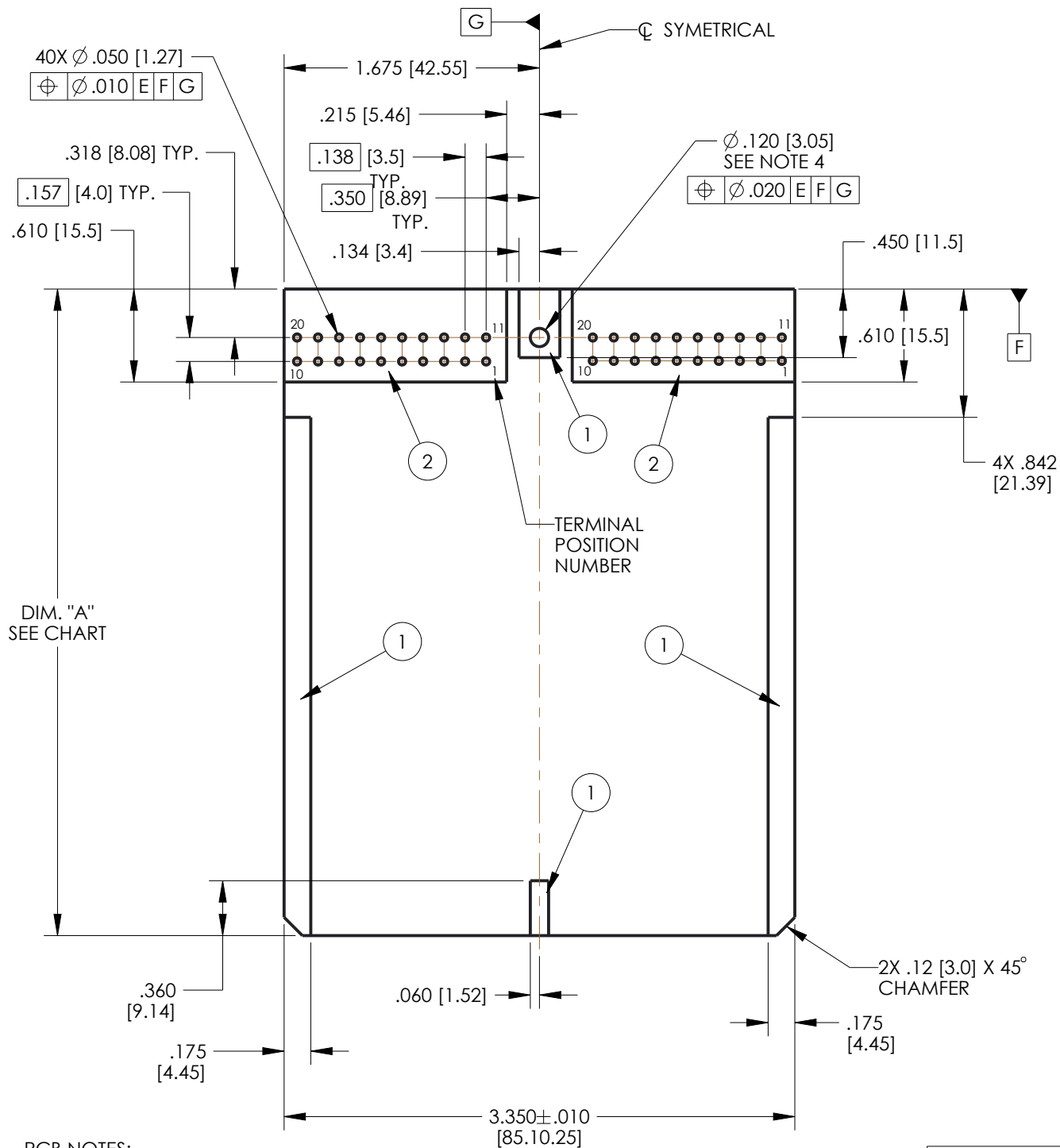


- NOTES:
- DIMENSIONS ARE IN INCHES EXCEPT DIMENSIONS INSIDE [XX] ARE IN mm. ALL DIMENSIONS ARE FOR REFERENCE ONLY.
  - MATERIALS:  
HEADER INSULATOR: 30% GLASS FILLED POLYMER, COLOR BLACK.  
TERMINAL BLADES: 1.5mm BRASS WITH TIN OVER NICKEL PLATING.
  - HEADERS ARE REFLOW OR WAVE SOLDERING PROCESS ROHS COMPLIANT.
  - SEE SHEET 2 FOR PCB DETAILS.
  - RIGHT SIDE MATES WITH MOLEX FEMALE CONNECTOR PART NUMBER 33472-2001 (COLOR BLACK).
  - LEFT SIDE MATES WITH MOLEX FEMALE CONNECTOR PART NUMBER 33472-2002 (COLOR GRAY).

UNITS <b>ENGLISH INCHES</b>		DESIGN ENGINEER K. ROSBOROUGH	DATE 07/29/14	<b>CINCH</b> <small>1700 FINLEY RD LOMBARD, IL. 60148</small>	
DO NOT SCALE DRAWING		UNLESS OTHERWISE SPECIFIED: ALL DIMENSIONS ARE IN INCHES FILLET/RADII .02 MAX. TOLERANCES .X ± .1 .XX ± .01 .XXX ± .005 ANGULAR ± .5°		TITLE <b>MODICE ME-MX 40 POSITION ASSEMBLY</b>	
CONFIDENTIAL THIS DOCUMENT IS THE PROPERTY OF CINCH. NEITHER THIS DOCUMENT NOR ANY OF THE INFORMATION CONTAINED IN IT MAY BE DUPLICATED OR DISCLOSED WITHOUT PRIOR WRITTEN CONSENT OF CINCH. ©COPYRIGHT 2014 CINCH		APPROVALS ON FILE		MATERIAL NOTED	
CAD FILE NUMBER 5810140011S				CONTROL SPEC NUMBER A15123	
CAGE IDENT NO. 71785		DRAWING NUMBER <b>581 01 40 011 S</b>		PROJECT NUMBER A15123	
SIZE B		SCALE 1:1		SHEET 1 OF 2	

# PCB TOP SIDE

# PCB BOTTOM SIDE



**PCB NOTES:**

- 1 SUGGESTED PCB THICKNESS .062 [1.57].
- 2 AREAS INDICATED BY (1) ARE COMPONENT AND TRACE KEEP OUT AREAS.
- 3 AREAS INDICATED BY (2) ARE COMPONENT KEEP OUT AREAS.
- 4 SUGGESTED SCREW TO SECURE PCB TO HEADER: #4 THREAD CUTTING SCREW (TYPE 23 OR SIMILAR) TORQUED TO 2-3 IN-LBS [0.23-0.34 N-m].

**RECOMMENDED PCB LENGTH**

DIM. "A" (SEE DRAWING)	USE WITH ENCLOSURE	
	PART NUMBER	DESCRIPTION
4.242±0.015 [107.75±0.38]	581 01 30 065	ME
	581 01 30 075	ME WITH BREATHER
2.542±0.015 [64.57±0.38]	581 01 30 090	MINI ME
	581 01 30 095	MINI ME WITH BREATHER

UNITS <b>ENGLISH INCHES</b>		<b>CINCH</b>		1700 FINLEY RD LOMBARD, IL. 60148	
DO NOT SCALE DRAWING		TITLE MODICE ME-MX 40 POSITION ASSEMBLY			
UNLESS OTHERWISE SPECIFIED: ALL DIMENSIONS ARE IN INCHES		SCALE <b>1:1</b>			
FILLET/RADII .02 MAX.		TOLERANCES .X ± .1 .XX ± .01 .XXX ± .005 ANGULAR ± .5°		DRAWING NUMBER <b>581 01 40 011S</b>	
CONFIDENTIAL THIS DOCUMENT IS THE PROPERTY OF CINCH. NEITHER THIS DOCUMENT NOR ANY OF THE INFORMATION CONTAINED IN IT MAY BE DUPLICATED OR DISCLOSED WITHOUT PRIOR WRITTEN CONSENT OF CINCH. ©COPYRIGHT 2014 CINCH		CAD FILE NUMBER 5810140011S	SIZE <b>B</b>	SCALE 1:1	REV <b>B</b>
		CAGE IDENT NO. <b>71785</b>	SCALE 1:1	SHEET 2 OF 2	