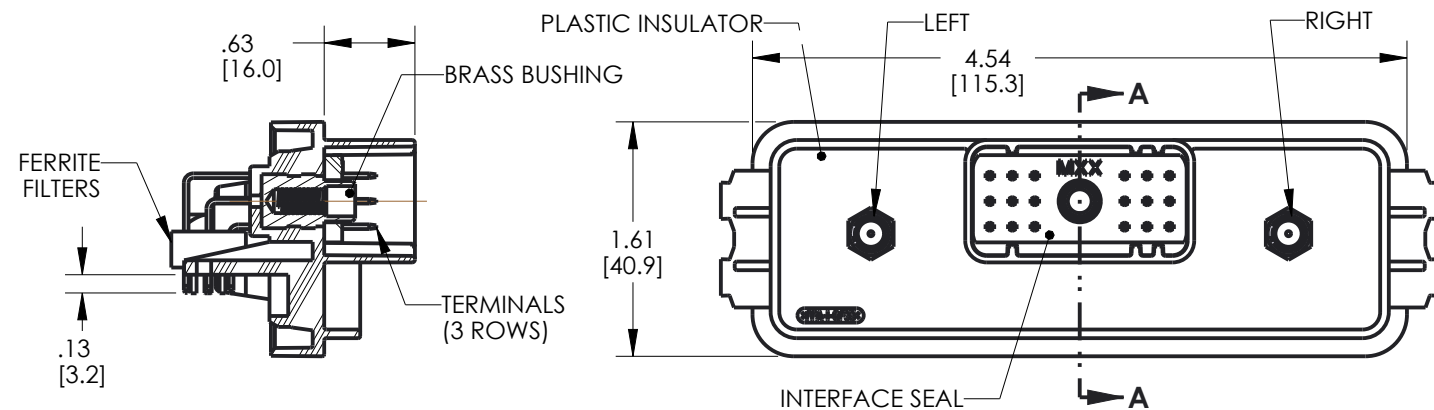
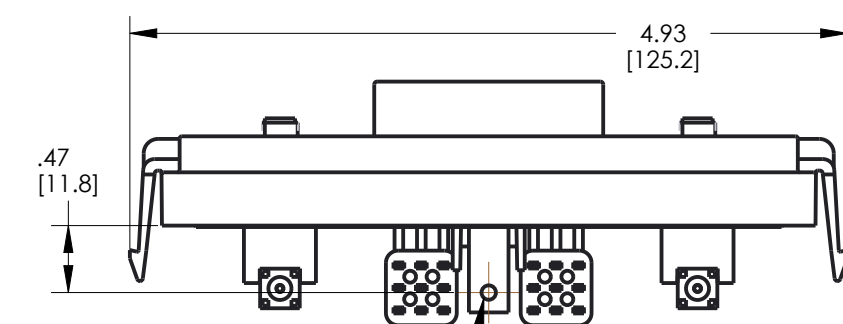


DRAWING REVISIONS
(RELEASE DATE ON FILE)

REV	DOCUMENT	APP	APPROVAL DATE
E	CO 3274	V.RICE	7/18/16



SECTION A-A
SCALE 3:4



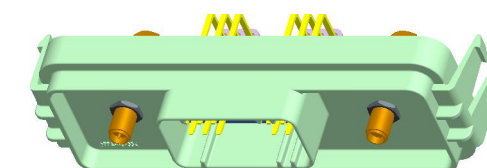
FOR PCB MOUNTING, #4 THREAD CUTTING SCREW (TYPE 23 OR SIMILAR) IS RECOMMENDED; TORQUE TO 2-3 in-lbs [0.23-0.34Nm]

**CINCH P/N: 5810618002 SHOWN
(18 POS HEADER WITH FILTERS)**

RP SMA = REVERSE POLARITY SMA SMA = STANDARD POLARITY SMA LEFT RIGHT	HEADER	I/O	FERRITE	LEFT RF	RIGHT RF
	5810618001	18	NO	RP SMA	SMA
	5810618002	18	YES	RP SMA	SMA
	5810618003	18	NO	N/A	SMA
	5810618004	18	YES	N/A	SMA
	5810618005	18	NO	RP SMA	N/A
	5810618006	18	YES	RP SMA	N/A
	5810618007	18	NO	RP SMA	RP SMA
	5810618008	18	YES	RP SMA	RP SMA
	5810618009	18	NO	SMA	SMA
	5810618010	18	YES	SMA	SMA

NOTES:

- ALL DIMENSIONS ARE REFERENCE ONLY. DIMENSIONS ARE IN INCHES; [BRACKETED DIMENSIONS ARE IN mm]
- MATERIALS:
INSULATOR: 30% GLASS FILLED POLYMER, COLOR BLACK
SMA: BODY: BRASS, NICKEL PLATED
CONTACT: PHOSPHOR BRONZE, GOLD PLATING OVER NICKEL
INSULATOR: PTFE
INTERFACE SEAL: SILICONE RUBBER, COLOR BLUE
INSULATOR: 30% GLASS FILLED POLYMER, COLOR BLACK
BUSHING: BRASS ALLOY, UNPLATED, 10-24 UNC THREAD
TERMINAL BLADES: 1.5 mm BRASS WITH TIN OVER NICKEL PLATING
FILTERS: FERRITE BLOCKS
- ALL HEADERS ARE REFLOW OR WAVE SOLDERING PROCESS COMPATIBLE, AND ROHS COMPLIANT
- SUGGESTED PCB THICKNESS: .062 [1.57]
- IF USING FERRITE FILTER VERSION, TRACES SHOULD BE AVOIDED UNDER THE FERRITE SPACER FEET. SEE "PCB TOP SIDE PIN AREA WITH FERRITES DETAIL" - PAGE 2.
- MATES WITH CINCH SHS PUSH-TO-SEAT HARNESS CONNECTOR P/N: 5810118023
- TORQUE SCREW OF MATING CONNECTOR TO 15 - 20 in-lbs [1.69 - 2.26 Nm]



SCALE 1:2

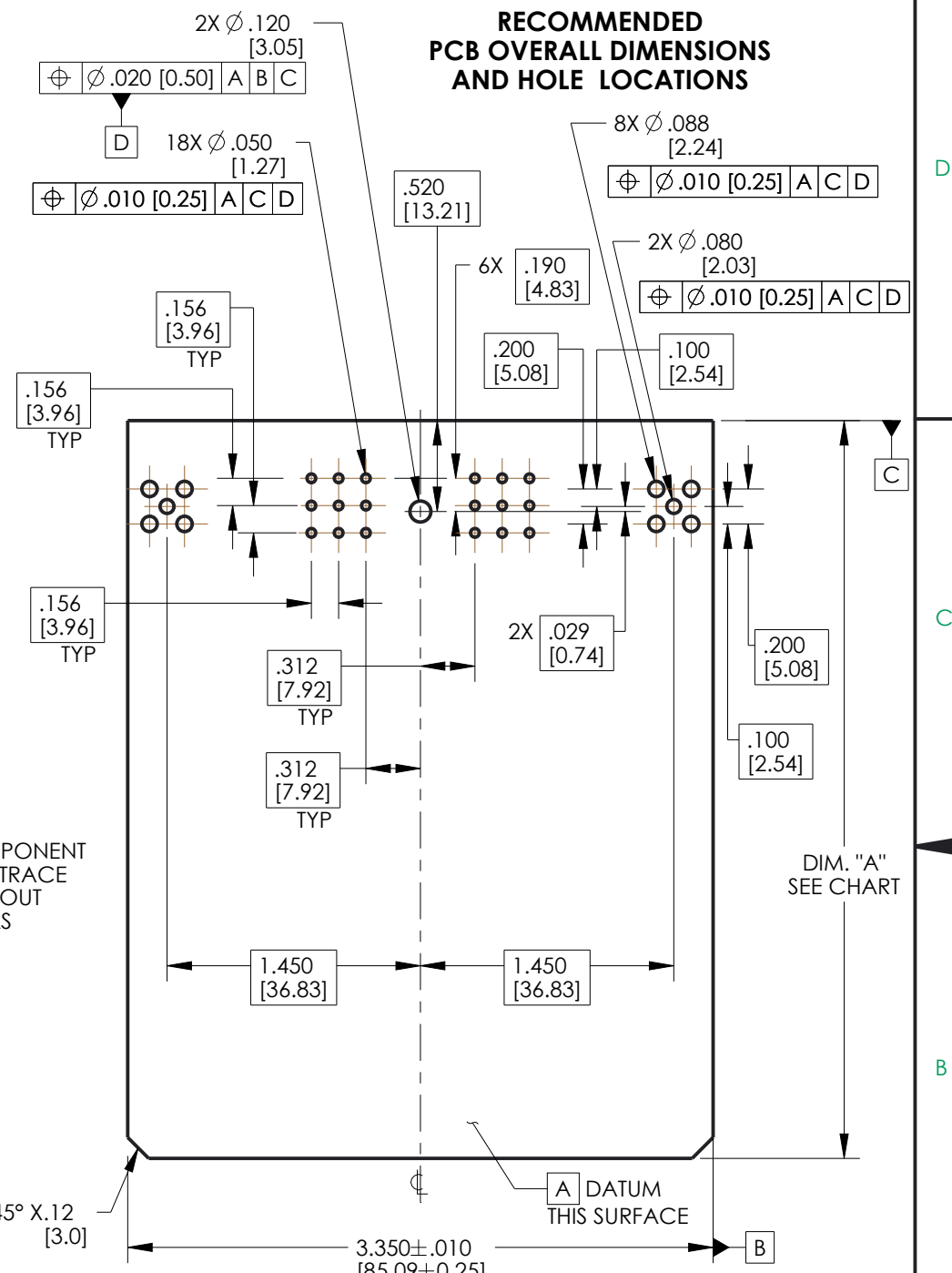
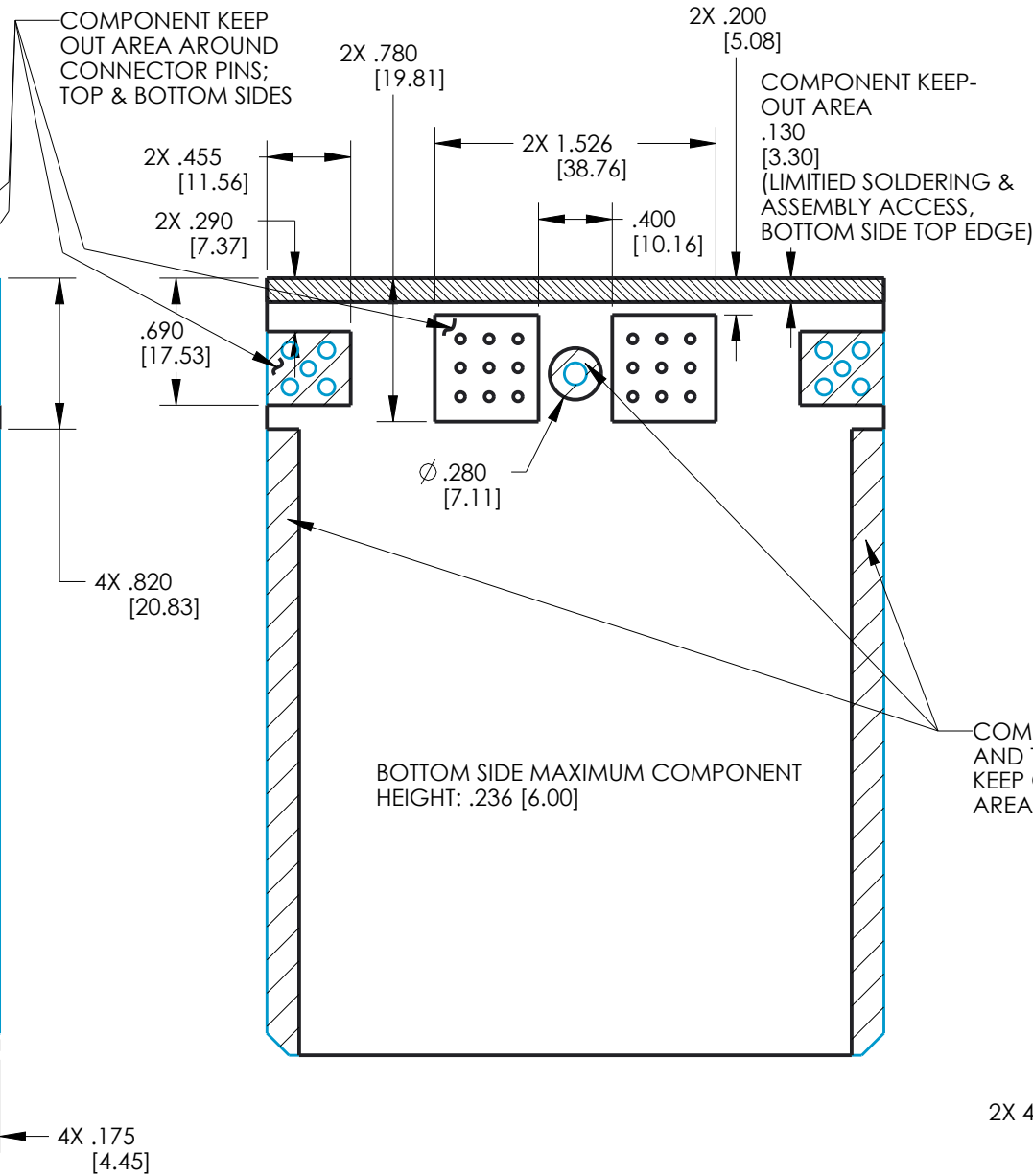
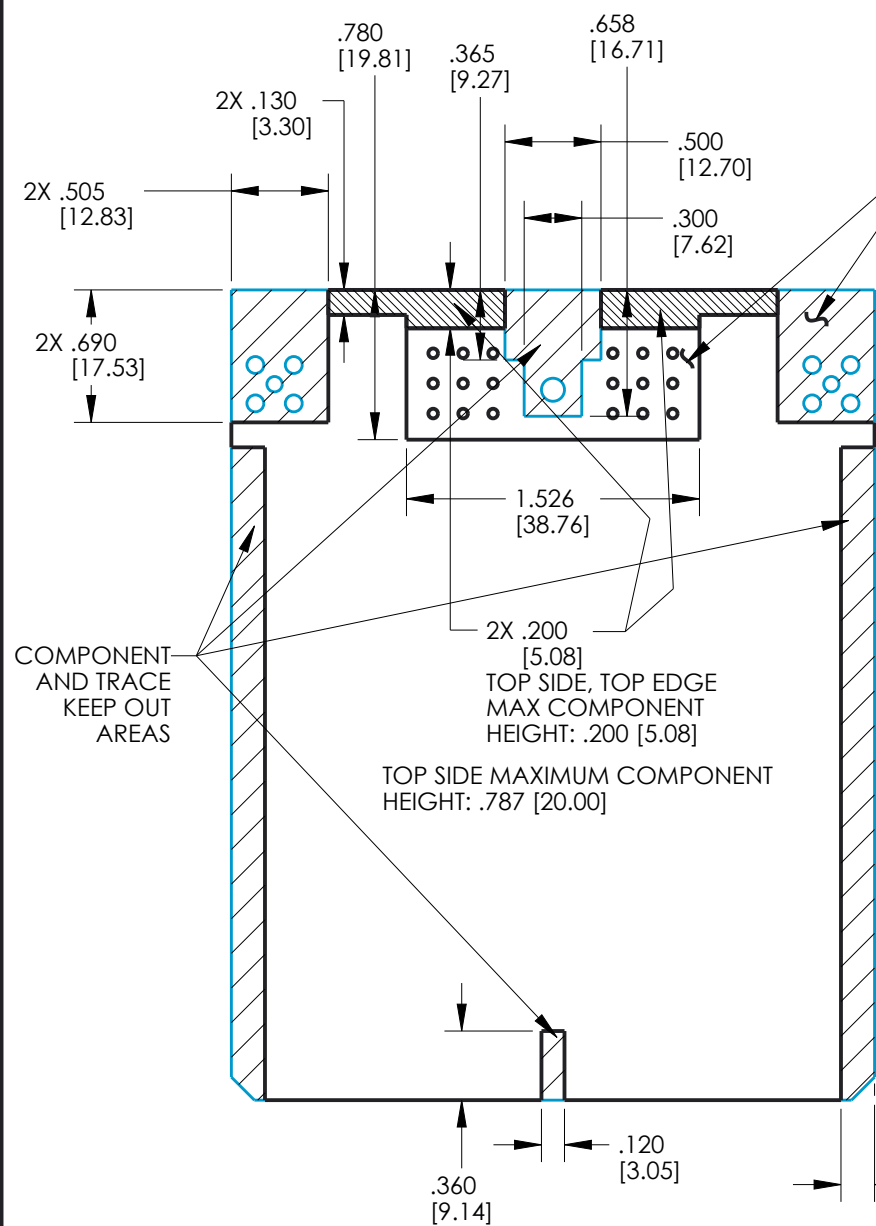
MODELED BY:
V. RICE

UNITS ENGLISH INCHES	DESIGN ENGINEER V. RICE	PRO/E DATE 5/16/12	CINCH 1700 FINLEY RD LOMBARD, IL 60148	
DO NOT SCALE DRAWING	TITLE MODICE ME-RF 18-WAY / SMA HEADER ASSEMBLY		CONTROL SPEC NUMBER	
CONFIDENTIAL THIS DOCUMENT IS THE PROPERTY OF CINCH. NEITHER THIS DOCUMENT NOR ANY OF THE INFORMATION CONTAINED IN IT MAY BE DUPLICATED OR DISCLOSED WITHOUT PRIOR WRITTEN CONSENT OF CINCH. ©COPYRIGHT 2009 CINCH	APPROVALS ON FILE		MATERIAL SEE NOTES	
	MATERIAL SPEC NUMBER		FINISH	
	PROJECT NUMBER A15085		DRAWING NUMBER 5810618001S	
	CAGE IDENT NO. 71785		SIZE B	
SCALE 1:1		SHEET 1 OF 2		

RECOMMENDED TOP SIDE PCB GENERAL ZONING AND KEEP-OUT AREAS

RECOMMENDED BOTTOM SIDE PCB GENERAL ZONING AND KEEP-OUT AREAS

RECOMMENDED PCB OVERALL DIMENSIONS AND HOLE LOCATIONS



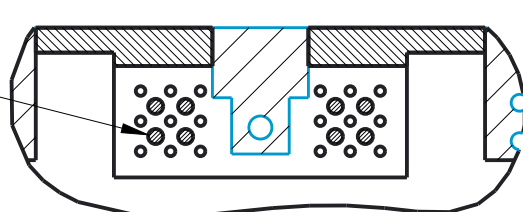
COMPONENT AND TRACE KEEP OUT AREAS

TOP SIDE MAXIMUM COMPONENT HEIGHT: .787 [20.00]

BOTTOM SIDE MAXIMUM COMPONENT HEIGHT: .236 [6.00]

COMPONENT AND TRACE KEEP OUT AREAS

FERRITE SPACER FEET TRACE KEEP OUT AREAS (8 PLACES) SEE NOTE 5



PCB TOP SIDE PIN AREA WITH FERRITES DETAIL

RECOMMENDED PCB LENGTH

DIM. "A" (SEE DRAWING)	USE WITH ENCLOSURE	
	PART NUMBER	DESCRIPTION
4.220±0.015 [107.19±0.38]	581 01 30 065	ME
	581 01 30 075	ME WITH BREATHER
2.520±0.015 [64.01±0.38]	581 01 30 090	MINI ME
	581 01 30 095	MINI ME WITH BREATHER

UNITS ENGLISH INCHES	CINCH 1700 FINLEY RD LOMBARD, IL. 60148	
DO NOT SCALE DRAWING	TITLE MODICE ME-RF 18-WAY / SMA HEADER ASSEMBLY	
PRO/E DRAWING		
CONFIDENTIAL THIS DOCUMENT IS THE PROPERTY OF CINCH. NEITHER THIS DOCUMENT NOR ANY OF THE INFORMATION CONTAINED IN IT MAY BE DUPLICATED OR DISCLOSED WITHOUT PRIOR WRITTEN CONSENT OF CINCH. ©COPYRIGHT 2009 CINCH	CAD FILE NUMBER 5810618001S	DRAWING NUMBER 5810618001S REV E
CAGE IDENT NO. 71785	SIZE B	SCALE 1:1
		SHEET 2 OF 2