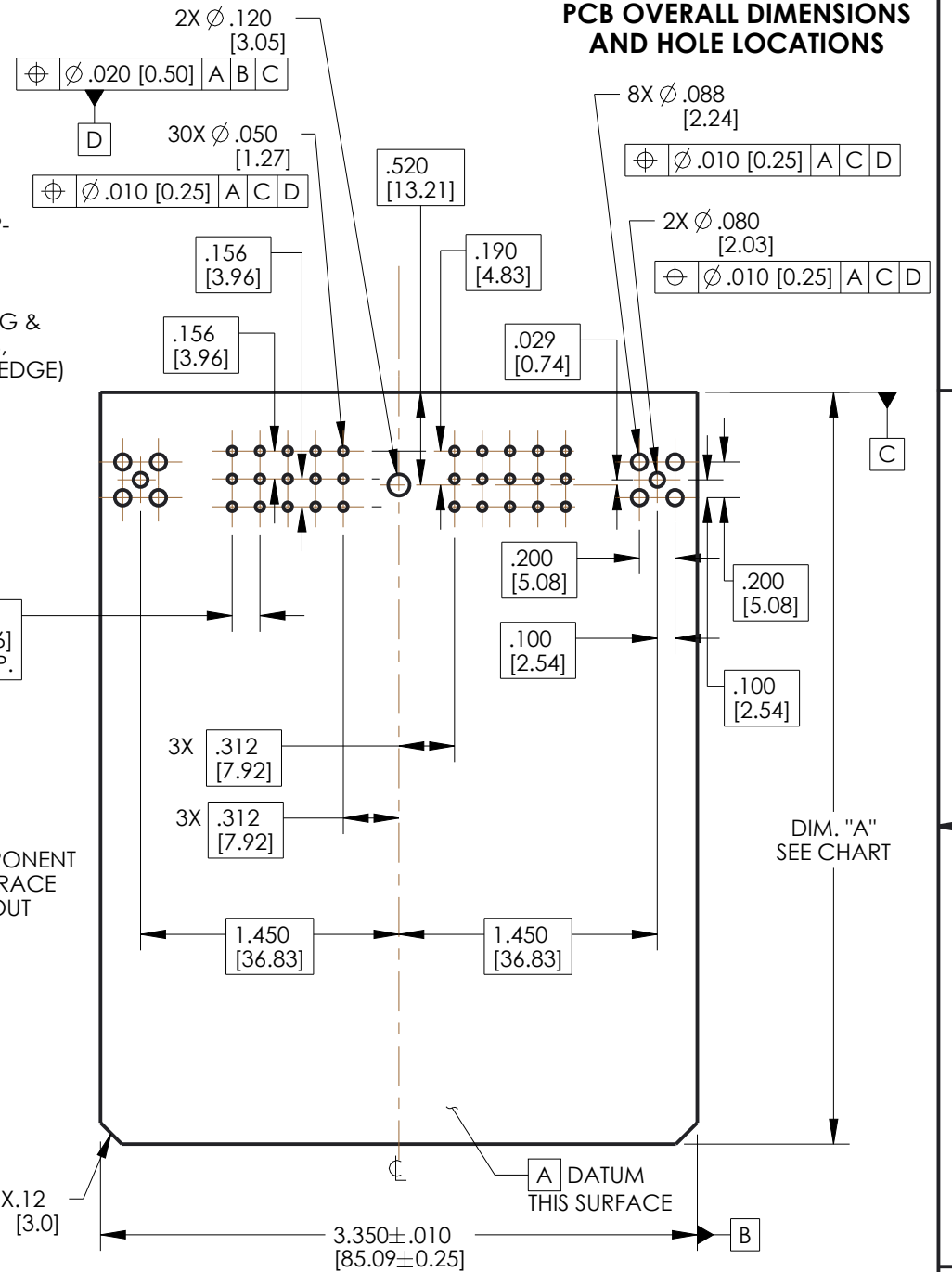
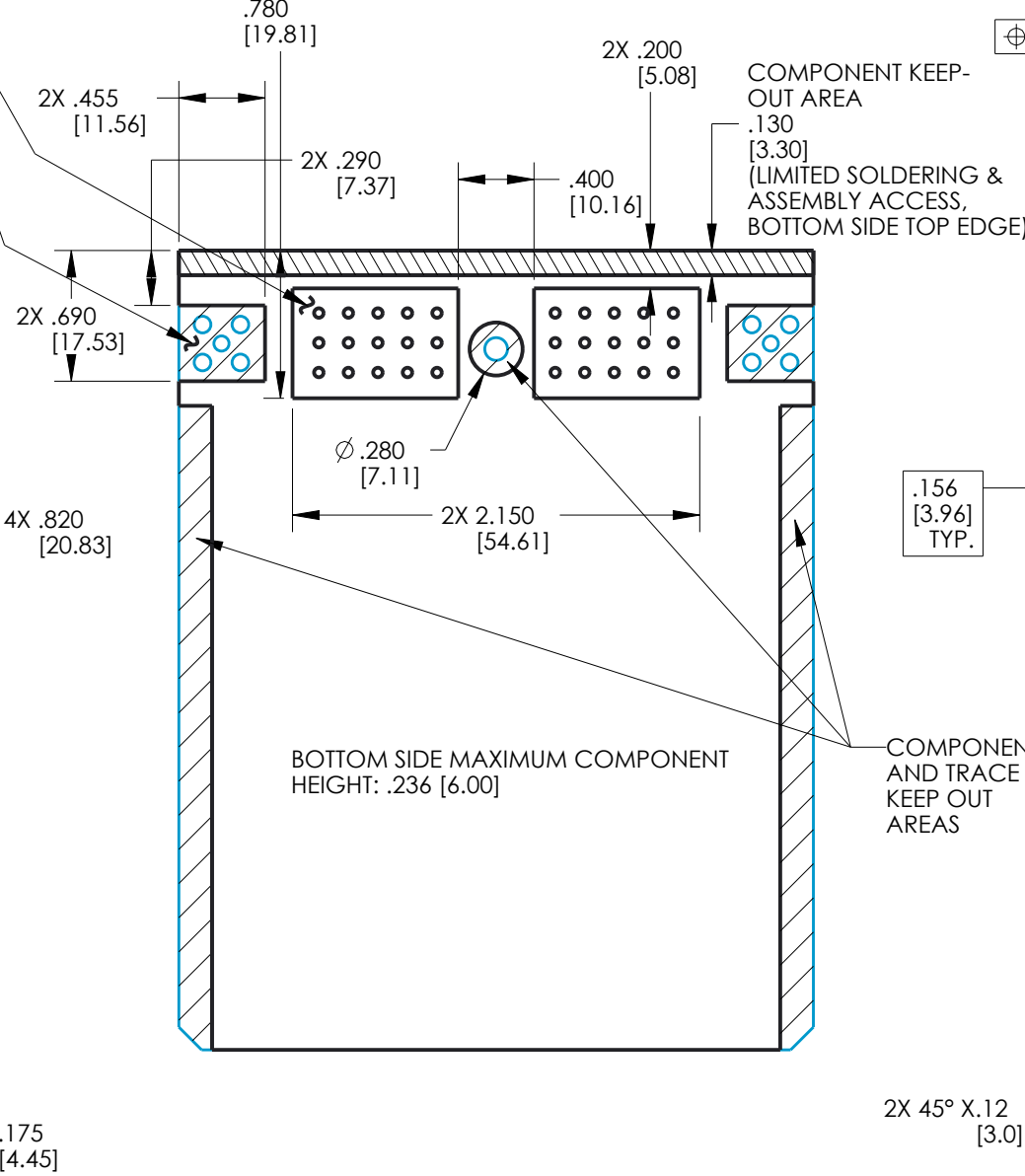
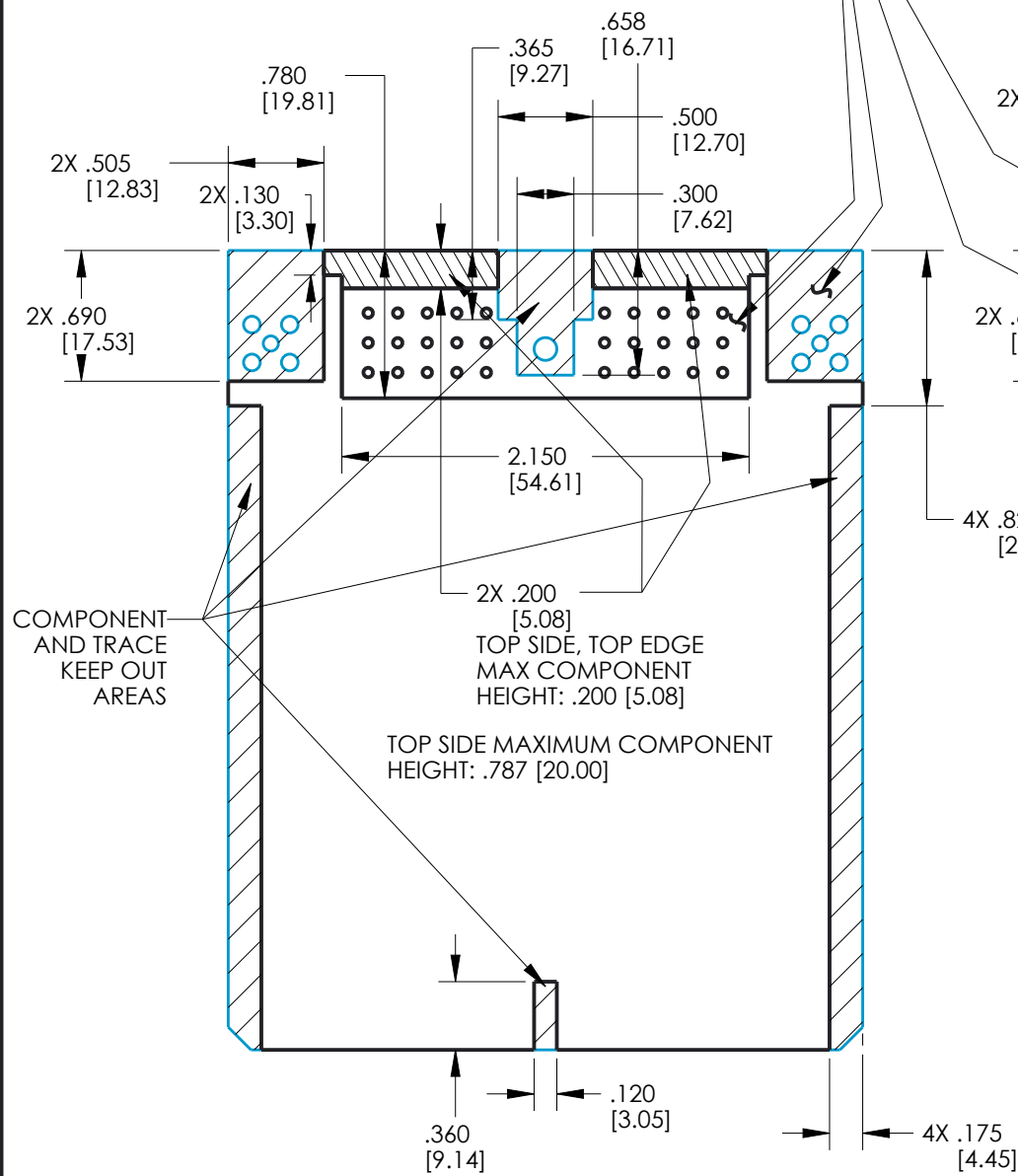




**RECOMMENDED PCB TOP SIDE GENERAL ZONING AND KEEP-OUT AREAS**

**RECOMMENDED PCB BOTTOM SIDE GENERAL ZONING AND KEEP-OUT AREAS**

**RECOMMENDED PCB OVERALL DIMENSIONS AND HOLE LOCATIONS**



COMPONENT AND TRACE KEEP OUT AREAS

TOP SIDE MAXIMUM COMPONENT HEIGHT: .787 [20.00]

2X .200 [5.08] TOP SIDE, TOP EDGE MAX COMPONENT HEIGHT: .200 [5.08]

BOTTOM SIDE MAXIMUM COMPONENT HEIGHT: .236 [6.00]

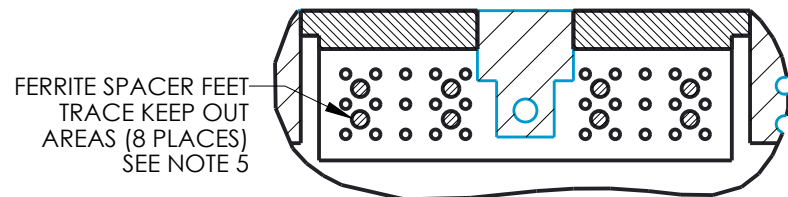
COMPONENT AND TRACE KEEP OUT AREAS

DIM. "A" SEE CHART

A DATUM THIS SURFACE

**RECOMMENDED PCB LENGTH**

DIM. "A" (SEE DRAWING)	USE WITH ENCLOSURE	
	PART NUMBER	DESCRIPTION
4.220±0.015 [107.19±0.38]	581 01 30 065	ME
	581 01 30 075	ME WITH BREATHER
2.520±0.015 [64.01±0.38]	581 01 30 090	MINI ME
	581 01 30 095	MINI ME WITH BREATHER



**PCB TOP SIDE PIN AREA WITH FERRITES DETAIL**

UNITS <b>ENGLISH INCHES</b>	<b>CINCH</b>		1700 FINLEY RD LOMBARD, IL. 60148
	DO NOT SCALE DRAWING		
TITLE MODICE ME-RF 30 WAY / SMA HEADER ASSEMBLY			
<b>PRO/E DRAWING</b>			
CONFIDENTIAL THIS DOCUMENT IS THE PROPERTY OF CINCH. NEITHER THIS DOCUMENT NOR ANY OF THE INFORMATION CONTAINED IN IT MAY BE DUPLICATED OR DISCLOSED WITHOUT PRIOR WRITTEN CONSENT OF CINCH. ©COPYRIGHT 2008 CINCH	CAD FILE NUMBER <b>5810630001S</b>	DRAWING NUMBER <b>5810630001S</b>	REV <b>E</b>
	CAGE IDENT NO. <b>71785</b>	SIZE <b>B</b>	SCALE <b>1:1</b>
	SHEET 2 OF 2		