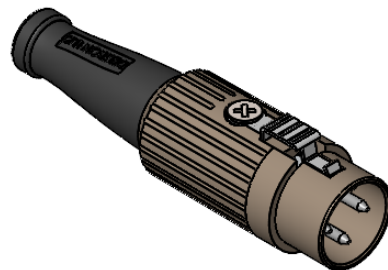
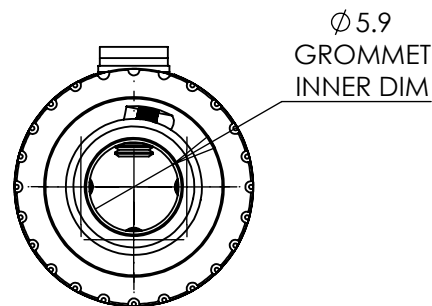
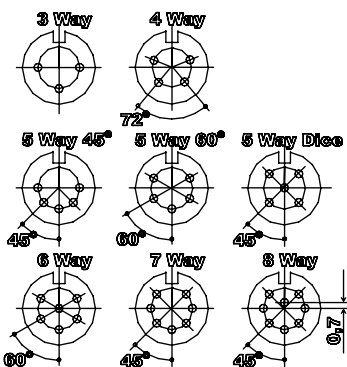
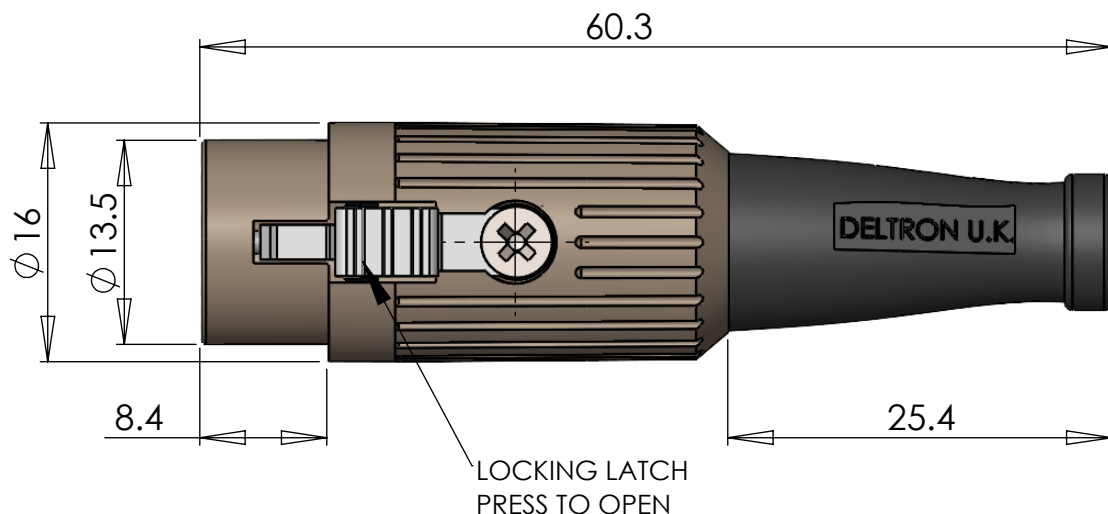


A FULLY SCREENED ROBUST RANGE OF DIN CONNECTORS FOR USE IN INSTRUMENTATION AND AUDIO APPLICATIONS. AVAILABLE IN TWO FINISHES; BRIGHT NICKEL AND BLACK CHROME. ROBUST CONSTRUCTION INCORPORATING CABLE GRIP AND STRAIN RELIEF.

MANUFACTURED TO DIN 41524, 45322, 45326, 45327 AND 45329.



DIMENSIONS



| MATERIALS      |   |
|----------------|---|
| HOUSING        | MAZAK                                   |
| HOUSING FINISH | BRIGHT NICKEL PLATED<br>OR BLACK CHROME |
| MOULDING       | NYLON                                   |
| CONTACTS       | BRASS CZ121, SILVER PLATED              |
| CABLE CLAMP    | MILD STEEL, SILVER PLATED               |
| GROMMET        | BLACK PVC                               |
| LOCKING LATCH  | SPRING STEEL, NICKEL PLATED             |
| SCREW          | MILD STEEL, NICKEL PLATED               |

| ELECTRICAL            |                       |
|-----------------------|-----------------------|
| RATED VOLTAGE         | 34V A/C or D/C        |
| CURRENT RATING        | 2 AMP                 |
| TEST VOLTAGE          | 500V r.m.s            |
| INSULATION RESISTANCE | 103 MΩ MIN AT 100V DC |
| CONTACT RESISTANCE    | 10mΩ MAX              |
| CAPACITANCE (MATED)   | 3 pF                  |

| CLIMATIC                |                |
|-------------------------|----------------|
| CLIMATIC CATEGORY       | 25/070/21      |
| TEMPERATURE RANGE       | -25°C TO +70°C |
| DAMP HEAT, STEADY STATE | 21 DAYS        |

|                        |                   |
|------------------------|-------------------|
| RECOMMENDED CABLE SIZE | 24-28 AWG         |
| CONDUCTOR SIZE         | ∅0.75mm - MAX     |
| PIN SOLDER BUCKET      | ∅ 1mm +0.1mm/-0.0 |

| TYPE      | PART NUMBER |          |
|-----------|-------------|----------|
|           | NICKEL      | BLACK    |
| 3 WAY     | 590-0300    | 591-0300 |
| 4 WAY     | 590-0400    | 591-0400 |
| 5 WAY 45° | 590-0500    | 591-0500 |
| 5 WAY 60° | 590-0510    | 591-0510 |
| 5 WAY     | 590-0520    | 591-0520 |
| 6 WAY     | 590-0600    | 591-0600 |
| 7 WAY     | 590-0700    | 591-0700 |
| 8 WAY     | 590-0800    | 591-0800 |

+44(0)1724 273200      www.dem-uk.com

**PROPRIETARY AND CONFIDENTIAL:**  
 THE INFORMATION CONTAINED IN THIS DRAWING IS THE SOLE PROPERTY OF ALPHA 3 MANUFACTURING. ANY REPRODUCTION IN PART OR AS A WHOLE WITHOUT THE WRITTEN PERMISSION OF ALPHA 3 MANUFACTURING IS PROHIBITED.

DEM Manufacturing is a division of Alpha 3 Manufacturing LTD  
 DEM Manufacturing, Deltron Emcon House, Hargreaves Way,  
 Sawcliffe Ind. Park, Scunthorpe, North Lincolnshire, DN15 8RF, UK

UNLESS OTHERWISE SPECIFIED DIMENSIONS ARE IN MILLIMETRES  
 LINEAR & RADIAL TOLERANCE:  
**GENERAL SPECIFICATION ONLY**

**IF IN DOUBT ASK! DO NOT SCALE DRAWING!**

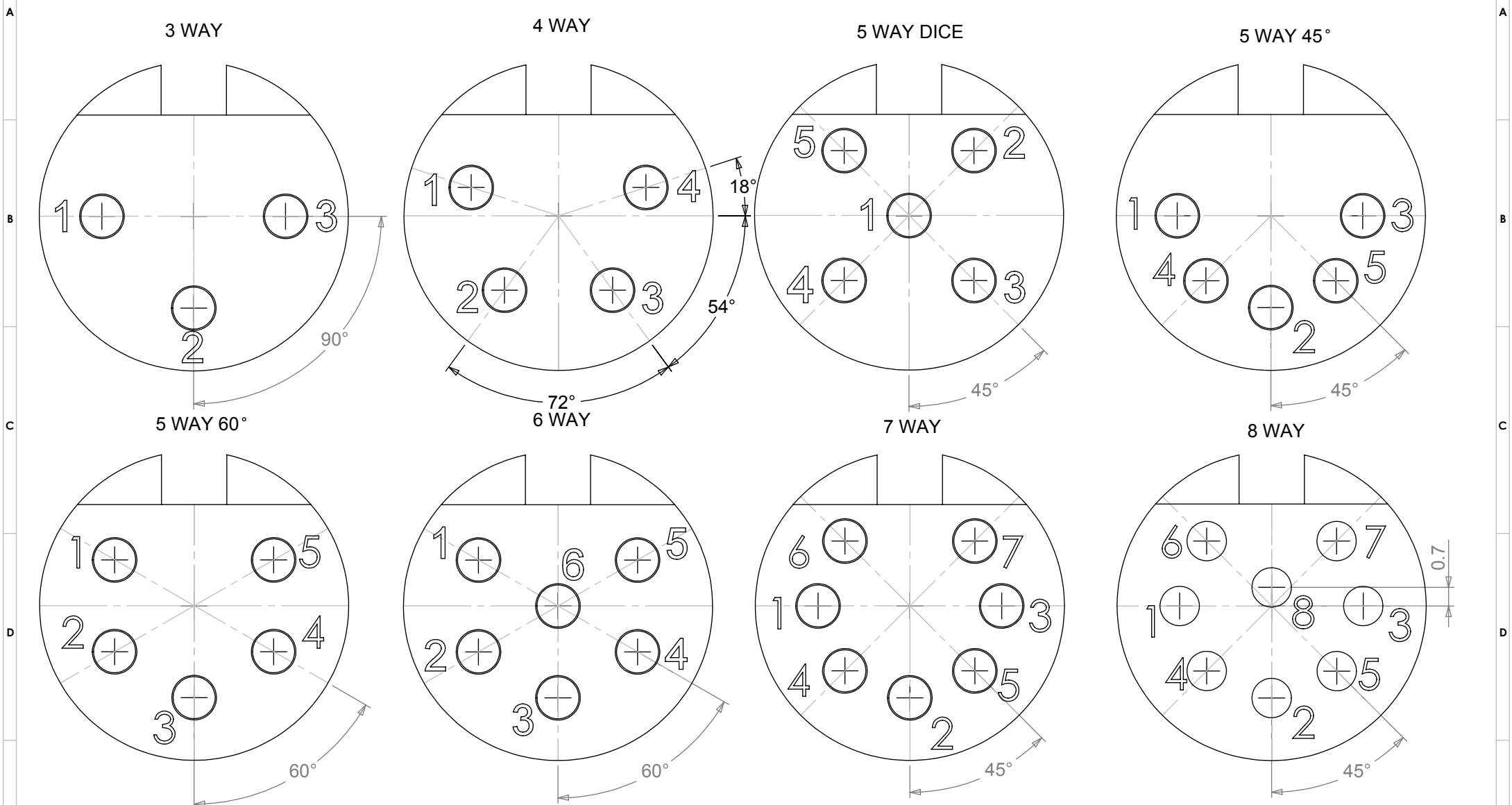
FINISH: SEE NOTE  
 MATERIAL: SEE NOTE

THE FINISHED PRODUCT SHOULD BE CLEAN AND FREE FROM ALL LIQUIDS AND DEBRIS. SURFACES SHOULD BE OF UNIFORM APPEARANCE FREE FROM SHARP EDGES, BURRS AND CORROSION

THIRD ANGLE PROJECTION

|              |            |          |                         |            |
|--------------|------------|----------|-------------------------|------------|
| AUTHOR       | SB         | TITLE    | GENERAL SPECIFICATION   |            |
| EDITOR       | DT         | FILE     | 590-591 SERIES          |            |
| APPROVER     | DT         | PART     | LATCHING DIN CONNECTORS |            |
| SHEET 1 OF 1 | ISSUE/REV. | 008      | EDIT DATE               | 17/06/2021 |
| SCALE 1:1    | A4         | RELEASED | RELEASE DATE            | 17/06/2021 |

**PIN VARIATIONS USED IN: 590 / 591 / 592 / 600 / 601 / 610 / 611 - DIN PLUG CONNECTORS**



**MANUFACTURED TO DIN STANDARD 41524, 45322, 45326, 45327 AND 45329**

**PROPRIETARY AND CONFIDENTIAL:**  
 THE INFORMATION CONTAINED IN THIS DRAWING IS THE SOLE PROPERTY OF ALPHA 3 MANUFACTURING. ANY REPRODUCTION IN PART OR AS A WHOLE WITHOUT THE WRITTEN PERMISSION OF ALPHA 3 MANUFACTURING IS PROHIBITED.  
 DEM Manufacturing is a division of Alpha 3 Manufacturing LTD  
 DEM Manufacturing, Deltron Emcon House, Hargreaves Way, Sawcliffe Ind. Park, Scunthorpe, North Lincolnshire, DN15 8RF, UK

UNLESS OTHERWISE SPECIFIED DIMENSIONS ARE IN MILLIMETRES  
 LINEAR & RADIAL TOLERANCE:  
**NO DECIMAL PLACES**  
**1 DECIMAL PLACE**  
**2 DECIMAL PLACES**  
**ANGULAR TOLERANCE:**

**IF IN DOUBT ASK! DO NOT SCALE DRAWING!**  
 FINISH: CLEAN  
 MATERIAL: REFER TO INDIVIDUAL RANGES  
 THE FINISHED PRODUCT SHOULD BE CLEAN AND FREE FROM ALL LIQUIDS AND DEBRIS. SURFACES SHOULD BE OF UNIFORM APPEARANCE FREE FROM SHARP EDGES, BURRS AND CORROSION

THIRD ANGLE PROJECTION

|              |            |          |                          |             |
|--------------|------------|----------|--------------------------|-------------|
| AUTHOR       | DT         | TITLE    | PIN ORIENTATIONS         |             |
| EDITOR       | DT         | FILE     | DIN PLUG PIN ORIENTATION |             |
| APPROVER     | AY         | PART     | DIN PLUG PIN BASE        |             |
| SHEET 1 OF 1 | ISSUE/REV. | 001      | VERSION                  | 11          |
| SCALE 5:1    | A4         | RELEASED | EDIT DATE                | 23 Apr 2018 |