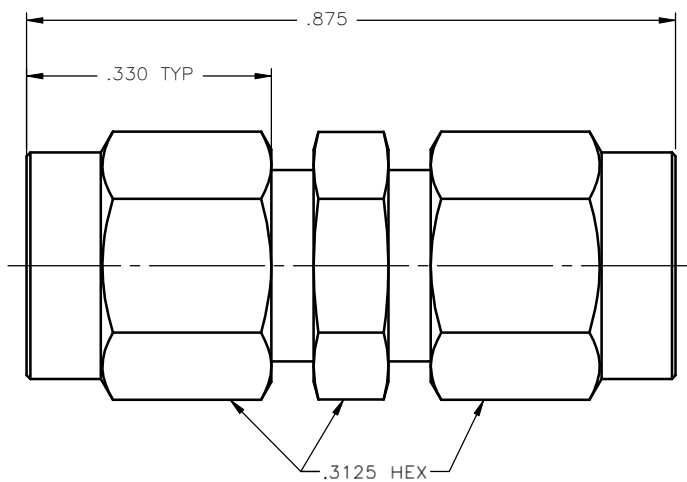


REVISIONS			
REV.	DESCRIPTION	DATE	APPROVED
A	INITIAL RELEASE	02/16/11	D.N.



NOTES:

MATERIALS:

1. BODY & COUPLING NUT = STAINLESS STEEL PER ASTM A582, ALLOY 303, CONDITION "A".
2. CONTACT & RETAINING RING = BERYLLIUM COPPER PER ASTM B196, ALLOY C17300, TEMPER TD04.
3. INSULATOR = VIRGIN WHITE TEFLON PER ASTM D1710, GRADE 1, TYPE I, CLASS "B".
4. GASKET = SILICONE RUBBER PER ZZ-R-765, CLASS 2B, GRADE 65-75.

FINISHES:

1. BODY & COUPLING NUT = PASSIVATE PER QQ-P-35, TYPE VI.
2. CONTACT = GOLD PLATE PER MIL-G-45204, TYPE II, CLASS 1, GRADE C, OVER .00010 TO .00020 STRESS FREE SULFAMATE NICKEL PER QQ-N-290.

UNLESS OTHERWISE SPECIFIED DIMENSIONS ARE IN INCHES TOLERANCES ON		DWN: D.N.	DATE: 02/16/11		Property of Radial This document cannot be reproduced or communicated to a third party without prior written permission of RADIAL.		
DECIMAL	ANGLE	CHKD: M.J.	DATE: 02/16/11		<b>SMA STRAIGHT PLUG TO PLUG ADAPTER</b>		
		APVD: J.M.	DATE: 02/16/11	SIZE: A			FSCM NO.: 19505
REFERENCE: ORIGINATED: D.N. DATE: 02/16/11		MATERIALS & FINISHES: SEE NOTES		SCALE: 5:1	THIRD ANGLE PROJECTION		SHEET 1 OF 1

5918-9103-000