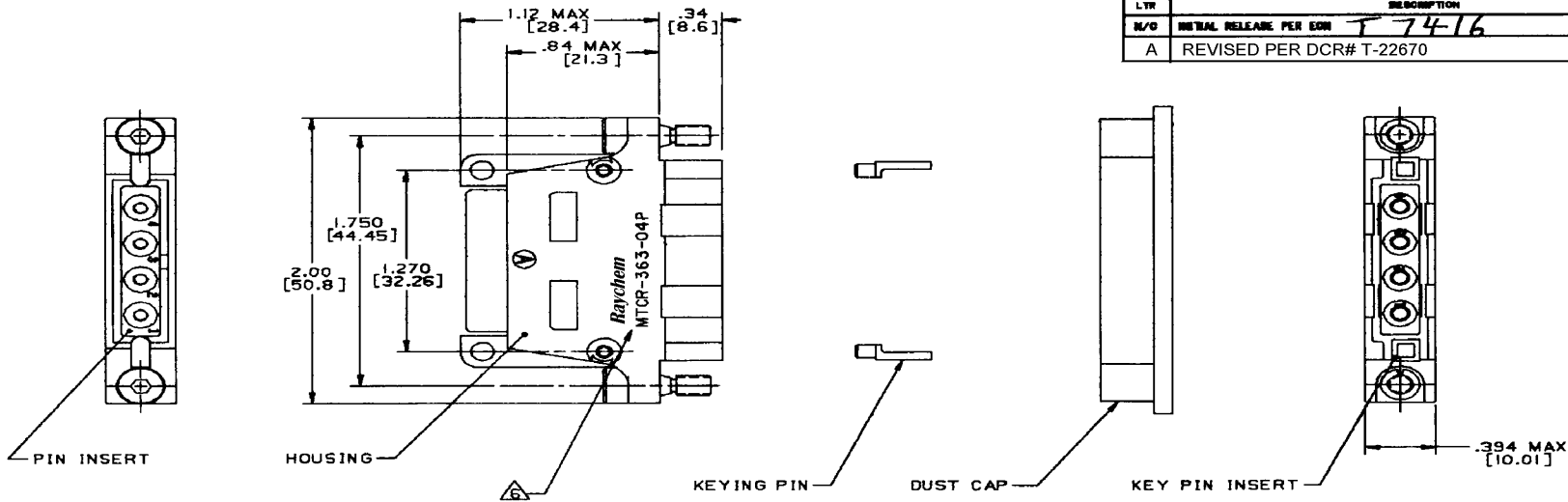


LTR		REVISIONS	DATE	APPROVED
N/O	INITIAL RELEASE PER EOM	T-74-16	12-3-86	J.S.
A	REVISED PER DCR# T-22670		3/9/99	M.HIGGY



NOTES:

1. THIS PART IS DESIGNED TO MEET THE REQUIREMENTS OF RAYCHEM SPECIFICATION C-6115. QUALIFICATION IS PENDING.
2. MATERIAL: MATERIALS ARE IN ACCORDANCE WITH RAYCHEM SPECIFICATION C-6115.
3. FINISH: FINISHES ARE IN ACCORDANCE WITH RAYCHEM SPECIFICATION C-6115.
4. FOR MOUNTING / MATING AND KEYING INFORMATION, SEE RAYCHEM DRAWING D652-0012
5. DUST CAP SUPPLIED INSTALLED WITH EACH RECEPTACLE
6. RAYCHEM, PART NO. MTCR-363-04P, AND DATE CODE ARE STAMPED APPROXIMATELY AS SHOWN.
7. CONNECTOR ACCOMODATES CONTACTS PER TABLE 1.
8. INSERT IS PERMANENTLY INSTALLED.
9. CONTACTS ARE INSERTED AND REMOVED USING TOOL NUMBER M81969/14-04.
10. UNUSED CAVITIES ARE TO BE SEALED USING SEALING PLUG NUMBER MS27488-12.
11. TOLERANCES: UNLESS OTHERWISE SPECIFIED  
 .XXX ± .005 [ $\pm 13$ ]  
 .XX ± .02 [ $\pm 5$ ]

12. WEIGHT: .053 lbs [ 24.08g ]

If this document is printed it becomes uncontrolled.  
 Check with the web for latest revision.

PIN CONTACT AND TOOLING INFORMATION

CONTACT TYPE	MILITARY PART NO.	WIRE STRIP LENGTH	TERMINATION TOOL
SHIELDED CONTACT FOR COAX CABLE D-602-0106 OR D-602-0094		SEE DRAWING D-602-0106 OR D-602-0094	SEE DRAWING D-602-0106 OR D-602-0094
CONTACT FOR TWISTED PAIR D-602-0104		SEE DRAWING D-602-0104	SEE DRAWING D-602-0104
POWER CONTACT SIZE 12	M39029/5-12-12	1/4" TO 5/16"	M22520/1-01 POSITIONER M22520/1-02

SPECIFICATION CONTROL DRAWING

DRAWN	D.J.K.	11-24-86	<b>Raychem</b> RAYCHEM CORPORATION 300 CONSTRUCTION DRIVE MIRLO PARK, CALIFORNIA 94025		
CHECKED	<i>SB</i>				
APPROVED	<i>Sam</i>	11-25-86	CONNECTOR, PLUG, 1" CADMIUM PLATED, FIXED PIN INSERT EME CLASS, MTC SERIES		
APPROVED	<i>Sam</i>	12-4-96			
UNLESS OTHERWISE SPECIFIED DIMENSIONS ARE IN INCHES. METRIC DIMENSIONS ARE IN PARENTHESES			SIZE	CODE IDENT. NO.	DWG NO.
DO NOT SCALE THIS DRAWING			C	06090	MTCR-363-04P A
CAD NAME: T22670.TIF			WEIGHT		SHEET 1 OF 1