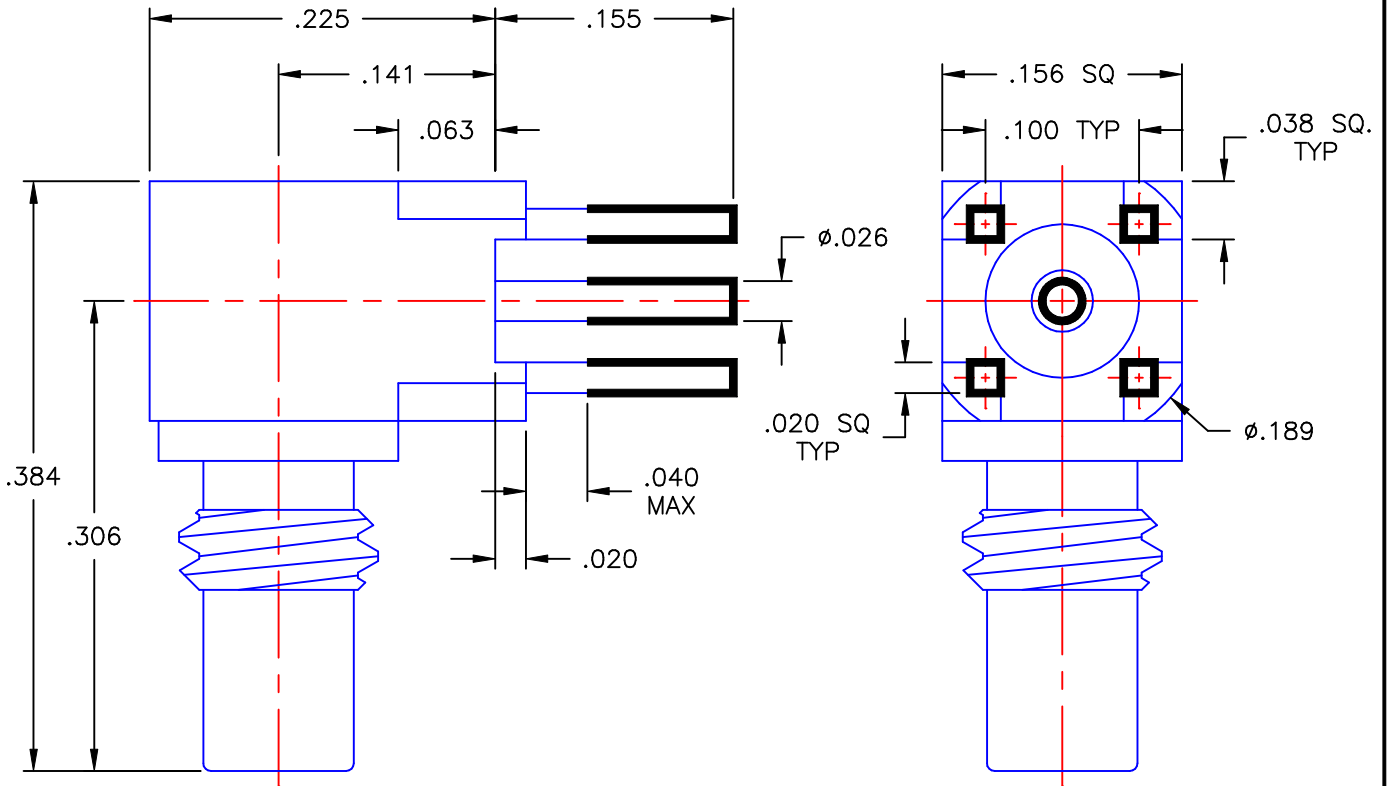


REVISIONS			
REV	DESCRIPTION	DATE	APPROVED
A	INITIAL RELEASE	10/23/08	A.D.M.



NOTES:


MATERIALS:

1. P.C.B. BODY & CAP = BRASS PER ASTM B16, ALLOY C36000, TEMPER H02.
2. INTERFACE BODY & CONTACTS = BERYLLIUM COPPER PER ASTM B196, ALLOY C17300, TEMPER TD04.
3. INSULATORS = VIRGIN WHITE TEFLON PER ASTM D1710, GRADE 1, TYPE I, CLASS "B".

FINISHES:

1. CONTACTS = GOLD PLATE PER MIL-G-45204, TYPE II, CLASS 1, GRADE C, OVER .00010 TO .00020 STRESS FREE SULFAMATE NICKEL PER QQ-N-290.
2. ALL OTHER METAL PARTS = GOLD PLATE PER MIL-G-45204, TYPE II, CLASS 0, GRADE C, OVER .00010 TO .00020 COPPER STRIKE PER MIL-C-14550.
3. TIN DIP = AEP STANDARD CLAUSE 100, Sn63 SOLDER DIP .0002-.0005 THICK.

Property of Radiall Incorporated
 This document cannot be reproduced or
 communicated to a third party without prior
 written permission of RADIALL Incorporated.

UNLESS OTHERWISE SPECIFIED DIMENSIONS ARE IN INCHES TOLERANCES ON		DWN: A.D.M.	DATE 10/23/08	 APPLIED ENGINEERING PRODUCTS 104 John W. Murphy Dr. New Haven, CT 06513
		CHKD: D.N.	DATE 10/23/08	
DECIMAL	ANGLE	APVD: J.M.	DATE 10/23/08	
REFERENCE:				SSMC RIGHT ANGLE MALE JACK P.C.B. MOUNT RECEPTACLE
ORIGINATOR: A.D.M. DATE: 10/23/08		MATERIALS & FINISHES: SEE NOTES		SIZE A
				FSCM NO. 19505
				DWG NO. 7010-1511-041
				REV A
		SCALE 8:1		THIRD ANGLE PROJECTION
				SHEET 1 OF 1

7010-1511-041