

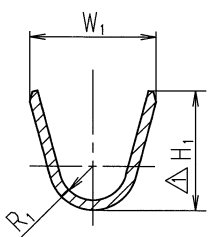
PART NO. AND CH. CODE	R <sub>1</sub>	W <sub>1</sub>	R <sub>2</sub>	W <sub>2</sub>	△H <sub>1</sub>	△H <sub>2</sub>	C	D	V	WIRE SIZE (mm <sup>2</sup> )
7114-4140-02	0.70	3.10	1.90	6.40	△(3.10)	△(5.70)	4.00	10.50	17.60	△ 0.5~1.25 OR EQUIVALENT
7114-4141-02	0.95	4.00	2.20	7.30	△(4.00)	△(6.50)	4.00	10.50	17.60	△ 1.4~2.5 OR EQUIVALENT
7114-4142-02	1.35	5.00	2.70	8.30	△(4.80)	△(7.00)	4.50	11.00	18.00	△ 3.0~4.0 OR EQUIVALENT
△ 7114-4143-02	1.35	5.60	2.90	9.10	△(5.85)	△(7.95)	4.50	11.00	20.60	5.0 FOR ESB-M1L-123-A

注記

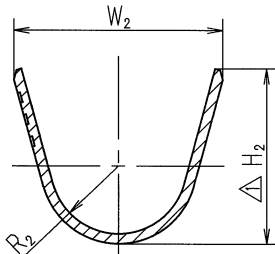
1. 嵌合相手品番 : 7116-4140-02 ETC.
- △ 2. 7114-4143-02 における通電電流値は、4.0 mm<sup>2</sup>電線相当以下とする。

NOTES

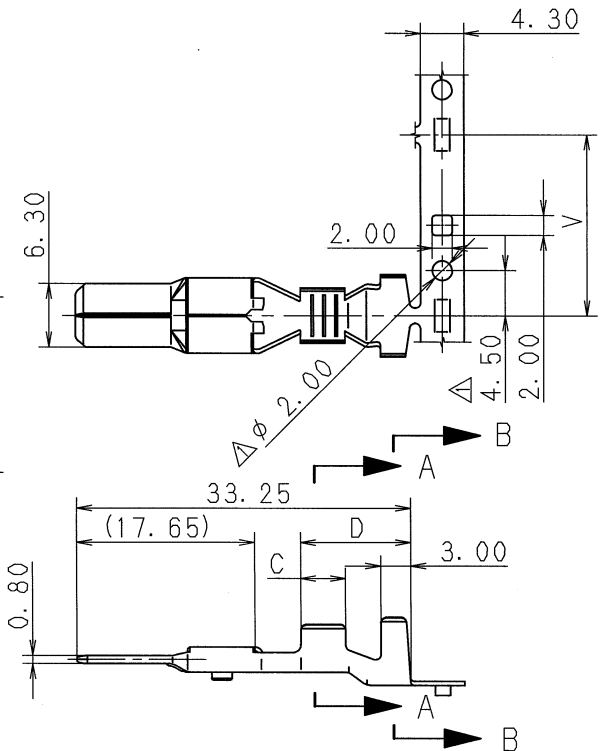
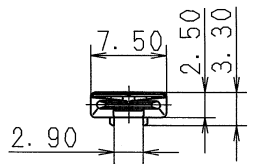
1. MATING PART NO. : 7116-4140-02 ETC.
- △ 2. CURRENT FOR 7114-4143-02 SHALL BE THE CURRENT FOR 4.0 mm<sup>2</sup> WIRE OR UNDER.



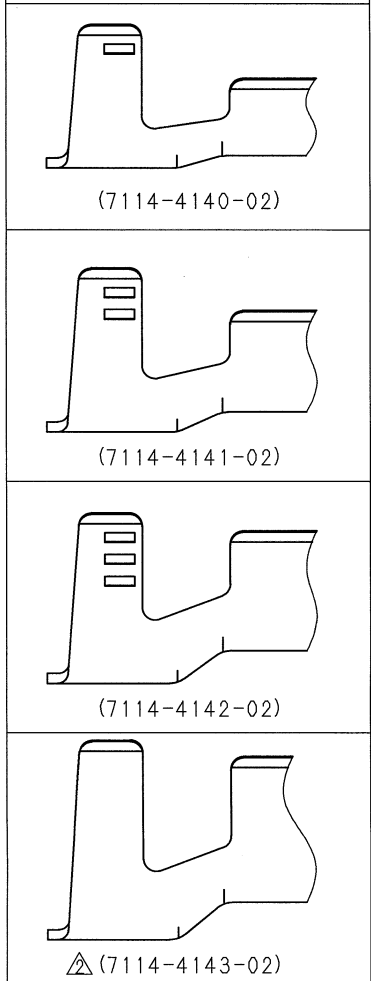
SEC. A-A (5/1)



SEC. B-B (5/1)



APPLICABLE WIRE SIZE MARK



△ 03.07.07	CHANGED WIRE SIZE	C03-X435	K. O
△ 99.10.21	CHANGED DIMENSION ETC.	C99-M580	M. K
△ 98.07.24	ADDED PART NO. ETC.	C98-M235	Y. U
△ 98.05.15	CHANGED FORM ETC.	C98-L675	H. T
— 96.08.01	NEW	C96-M173	H. K
LET	DATE	REVISION RECORD NO.	CHKD
GENERAL TOLERANCE			
	10MAX	50MAX	100MAX
A	±0.15	±0.2	±0.3
B	±0.2	±0.3	±0.55
(C)	±0.3	±0.5	±0.8
	250MAX	2500VR	ANGLE
	±0.5	±0.75	±30'
	±1.4	±30'	0.1
	±2	±30'	0.15
SPECIFIED MASS			
		g	

CUSTOMER	MATL. COPPER ALLOY t=0.40	TREAT. & FIN.
CUSTOMER PART NO.	SPEC. (TIN PLATING)	
CUSTOMER DWG NO.	NAME △ 6.3 SYSTEM SEALED CONNECTOR	
TRIAL PART NO.	MALE TERMINAL	
VENDOR NO.	PART NO. 7114-4140-02 ETC.	SET DWG NO.
DWG SOURCE	DWG DATE	DWG NO. 7114-4140-02:R
NEW	96.08.01	
APPROVED	CHECKED	
Y. OHKUBO	IWAHORI	
03.08.20	03.08.20	03.07.07
YAZAKI CORPORATION		