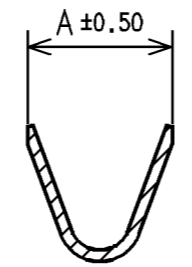
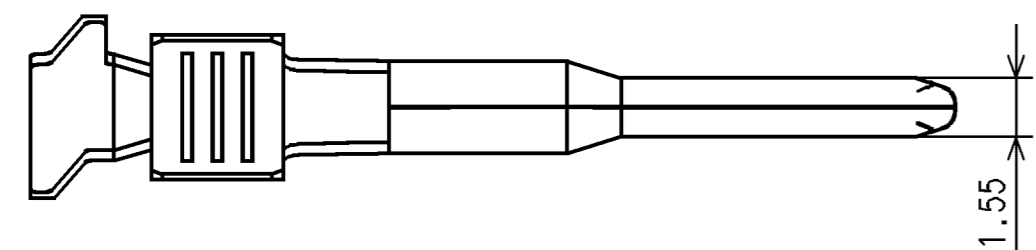
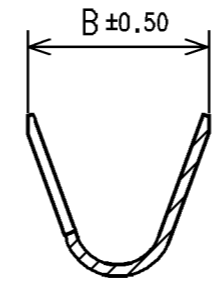


| GENERAL TOLERANCE | | | | | | | | | | | |
|-------------------|--------|--------|---------|---------|---------|--------|---------|---------|---------|-------|--------|
| | 10 MAX | 50 MAX | 100 MAX | 250 MAX | 250 OVR | R5 MAX | R10 MAX | R20 MAX | R20 OVR | ANGLE | ECCENT |
| A | ±0.15 | ±0.2 | ±0.3 | ±0.5 | ±0.75 | ±0.2 | ±0.3 | ±0.5 | ±2.5 | ±3° | 0.1 |
| B | ±0.2 | ±0.3 | ±0.55 | ±0.95 | ±1.4 | | | | | ±3° | 0.1 |
| Ⓞ | ±0.3 | ±0.5 | ±0.8 | ±1.4 | ±2.0 | | | | | ±3° | 0.15 |

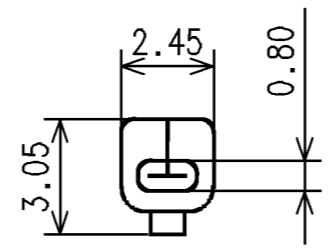
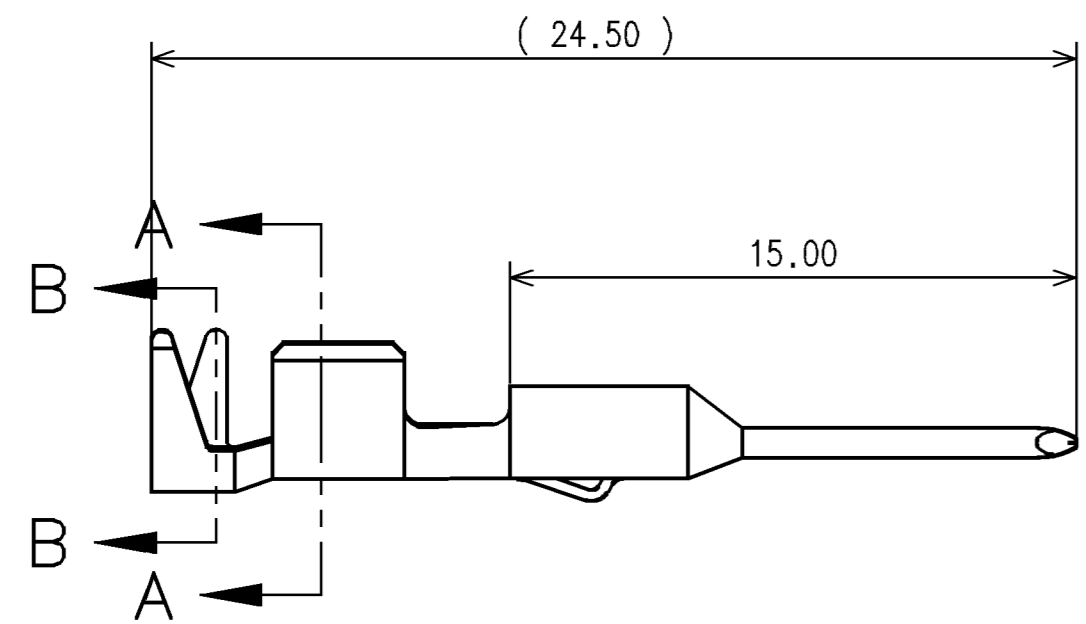
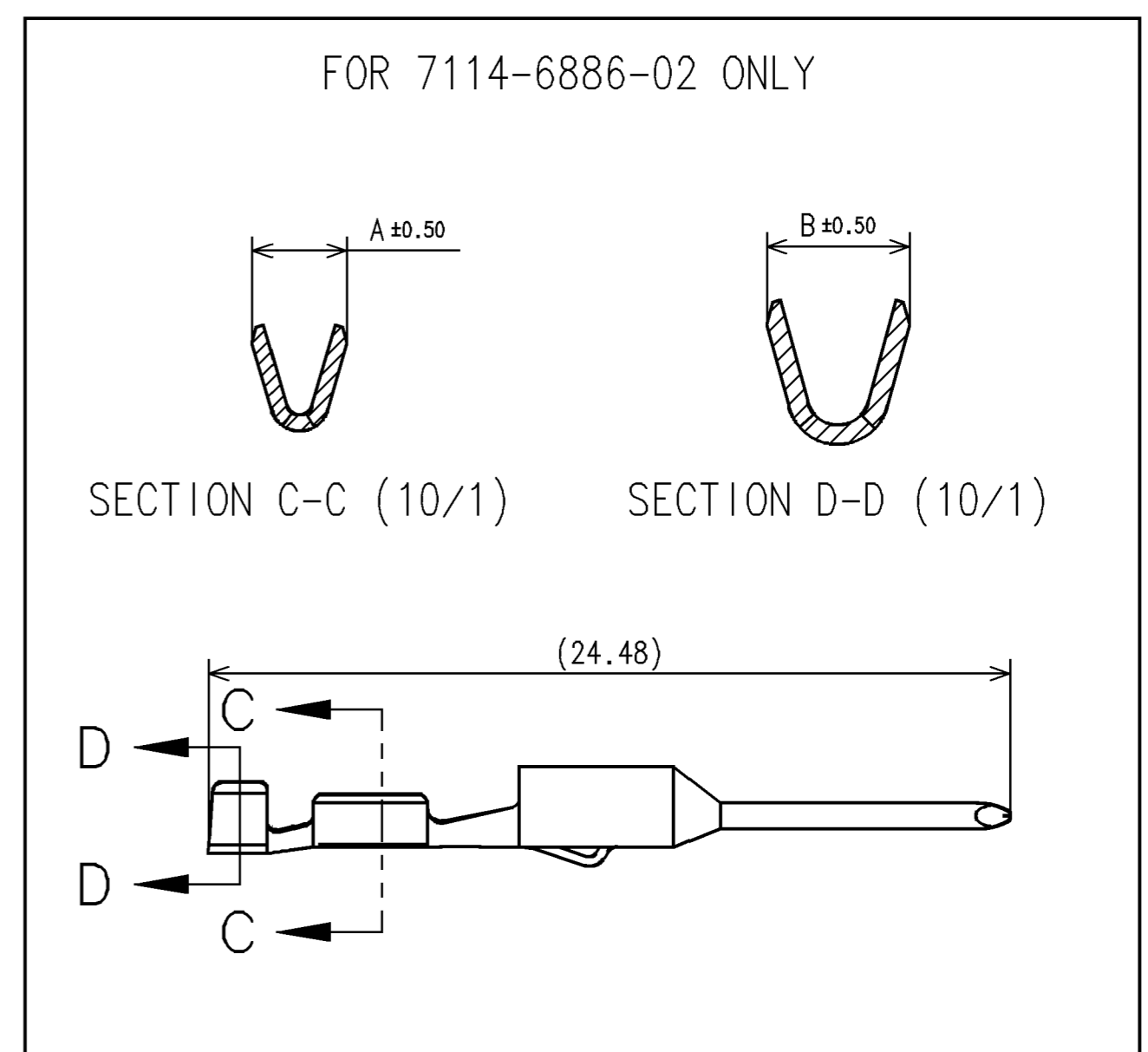
| PART NUMBER | APPLICABLE WIRE SIZE (SINGLE CRIMP) | | GRIP DIMENSIONS | |
|--------------|--|-------------|-----------------|------|
| | AWG | INSULATION | A | B |
| 7114-6315-02 | 22~20 | 1.10 - 1.90 | 2.30 | 3.30 |
| 7114-6316-02 | 18~16 | 1.45 - 2.40 | 3.00 | 4.00 |
| 7114-6317-02 | 14 | 1.90 - 2.70 | 3.50 | 4.80 |
| 7114-6886-02 | ISO 0.13mm ² UTW, TW (O.D. 0.81-1.05mm) | | 1.39 | 2.18 |



SECTION A-A



SECTION B-B



NOTES:

- PARTS MUST BE PURCHASED FROM YAZAKI.
- PARTS MUST BE FREE OF BURRS AND SHARP EDGES THAT MAY BE DETRIMENTAL TO SATISFACTORY ASSEMBLY, SAFE HANDLING, OR FUNCTION OF THE PART.
- MATING TERMINAL NUMBER: 7116-6317-02 ETC.
- MATERIAL: COPPER ALLOY
- PLATING: TIN PLATED (ALL OVER)
- PART DESIGNED TO SATISFY USCAR-2, REVISION 4, MAY 2004, CLASS 3.
- PART TO COMPLY WITH YPES-31-038 REQUIREMENTS.
- THIS DRAWING IS TO BE USED FOR INTERNAL YAZAKI PSW SUBMISSION.

ISSUE MARK

| LET | DATE | REVISION RECORD | NO. | CHKD |
|-----|------------|-----------------|----------|------|
| - | 05-09-2011 | NEW | C11-A421 | MMR |

SPECIFIED MASS g

| | | | | |
|--------------------|-----------------|--------------------------------------|------------|--------------|
| CUSTOMER | | MATL. SPEC. | SEE NOTES | TREAT & FIN. |
| CUSTOMER PART NO. | | NAME YESC III 1.5mm SYSTEM CONNECTOR | | |
| OFFICE YNA | | MALE TERMINAL | | |
| VENDOR | | PART NO. 7114-6317-02, ETC. | | |
| VENDOR NO. | | CH. CODE 7114-6317-02:R | | |
| DWG TYPE | DWG SOURCE | DWG DATE | UNIT | SCL |
| R | 7114-6317-02:MA | 05-09-2011 | mm | 5/1 |
| APPROVED | CHECKED | CHECKED | DESIGN | DRAWN |
| | | | OSTERHART | |
| | | | 06-16-2008 | |
| YAZAKI CORPORATION | | | | |