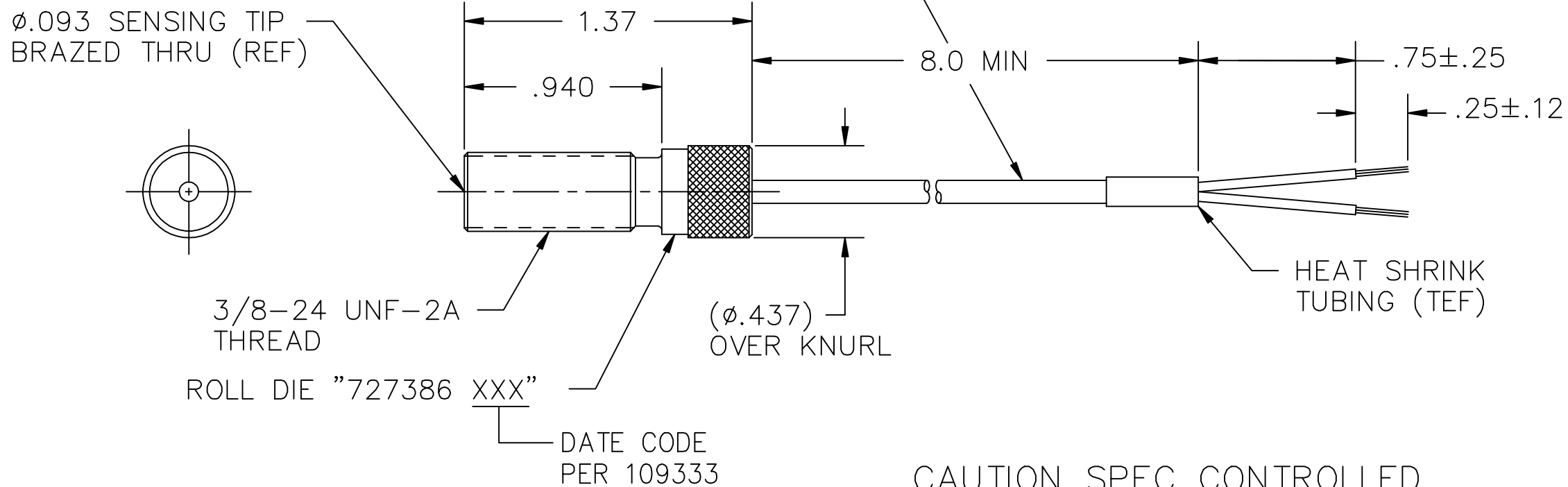


HONEYWELL  
PART NUMBER  
727386

SPECIFICATION DATA						
PARAMETER	VALUE	RCRD	100 %	OTHER	REF	PROCEDURE
OUTPUT VOLTAGE	5.0V pk-pk MIN	x	x			108022 (A)
COIL RESISTANCE	68 OHMS MAX	x		2.5 AQL		108018
INDUCTANCE	16 mH MAX @1000 Hz	x		2.5 AQL		108018
DIELECTRIC STRENGTH	500V RMS AT 60HZ FOR 1 MIN MAX NOT TO EXCEED 100V PER SECOND	x		2.5 AQL		108019
LEAKAGE RESISTANCE	100 MEGOHMS MINIMUM	x		2.5 AQL		108055
TEMPERATURE LIMITS	-100°F to +450°F				x	
CUSTOMER DWG NO	2495650					

(A) TESTED AT 1000 I.P.S. (6180 Hz) WITH A 20 PITCH 3.5" DIA, 68 TOOTH GEAR AT .015 ±.001 INCH CLEARANCE AND A LOAD OF 5K OHMS.

REV	DOCUMENT	CHANGED BY	CHECK
D	0073213	DN 10JAN11	DSK



- NOTES
- 1 - CUSTOMER : PARKER HANNIFIN
  - 2 - POLARITY : WHITE LEAD IS POSITIVE WITH RESPECT TO BLACK LEAD UPON APPROACH OF FERROUS METAL
  - 3 - MATERIAL : SHELL IS NON-MAGNETIC, STAINLESS STEEL

DESIGN UNITS: INCH	DRAWN	MBEAL	13JUL90
TOLERANCES UNLESS NOTED:	CHECK	PEP	01AUG90
FRACTIONS ± 1/32	THIS DRAWING COVERS A PROPRIETARY ITEM AND IS THE PROPERTY OF HONEYWELL. THIS DRAWING IS NOT TO BE COPIED OR USED WITHOUT THE PERMISSION OF HONEYWELL.		
NO PLACES x ±	INTERPRET PER ASME Y14.5M-1994 OTHER HONEYWELL ENGINEERING STANDARDS MAY APPLY		
ONE PLACE .x ±	SIZE	TYPE	CAGE CODE
TWO PLACE .xx ±	B	I	81692
THREE PLACE .xxx ±	DRAWING NAME		
ANGLES x ±	727386		
THIRD ANGLE PROJECTION	SCALE	NONE	
	AUTOCAD	2D	SHEET 1 OF 1

<b>Honeywell</b>			
TITLE			
MAXI-MAG SENSOR 3/8-24 X .94 W/CABLE			
SIZE	TYPE	CAGE CODE	DRAWING NAME
B	I	81692	727386
SCALE	NONE		SHEET 1 OF 1

REV	D
-----	---