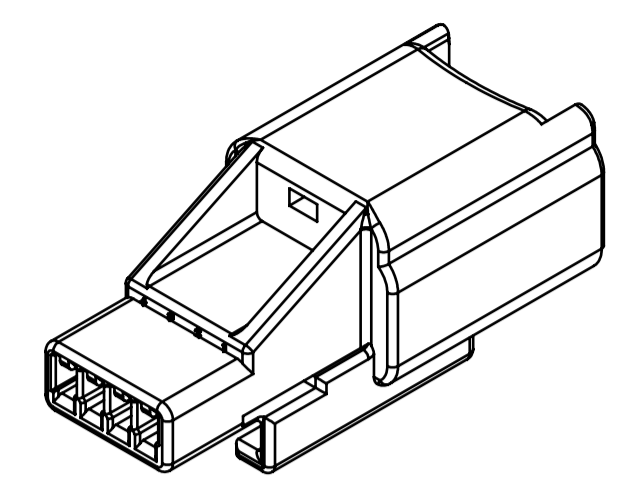
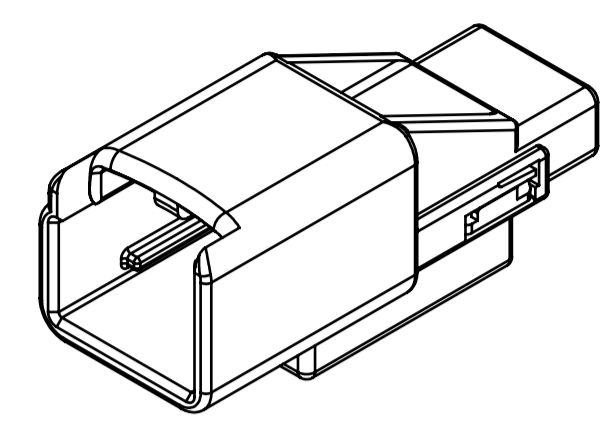
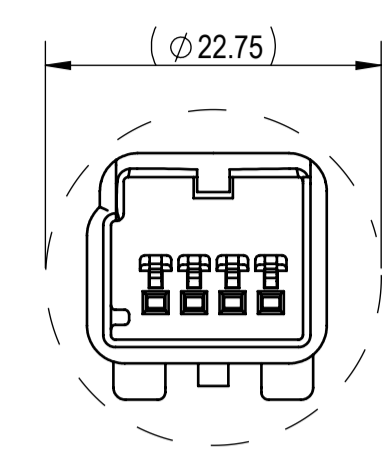
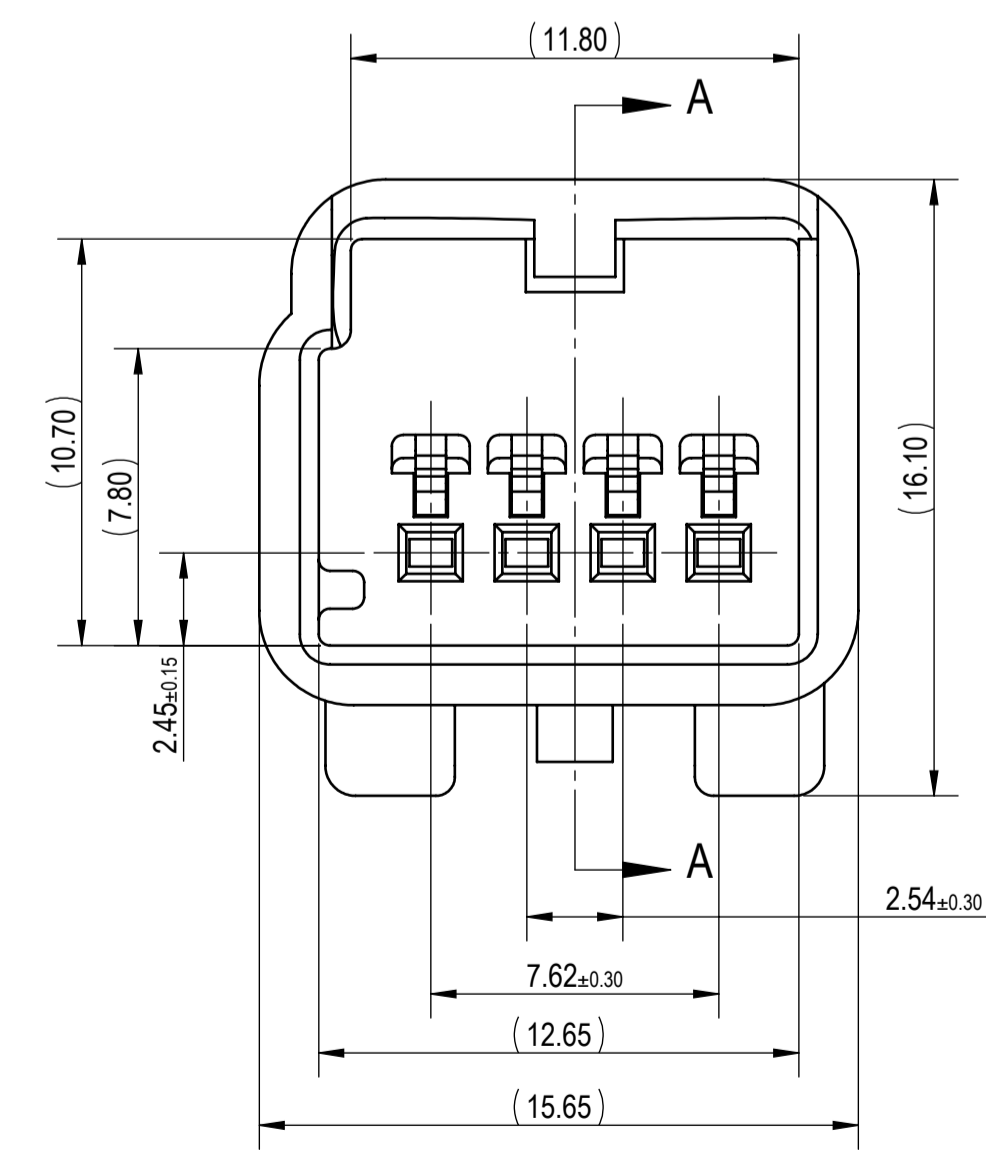
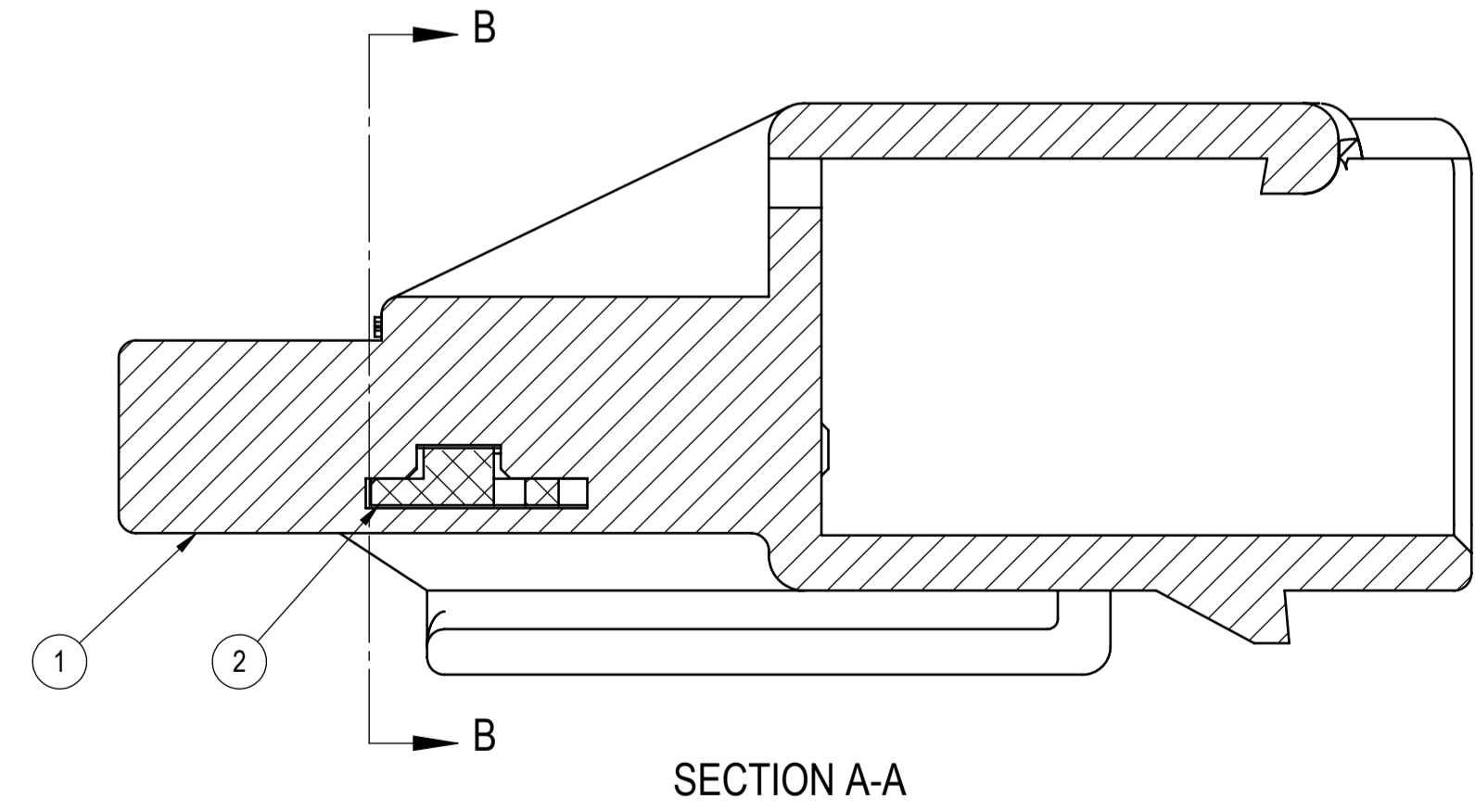
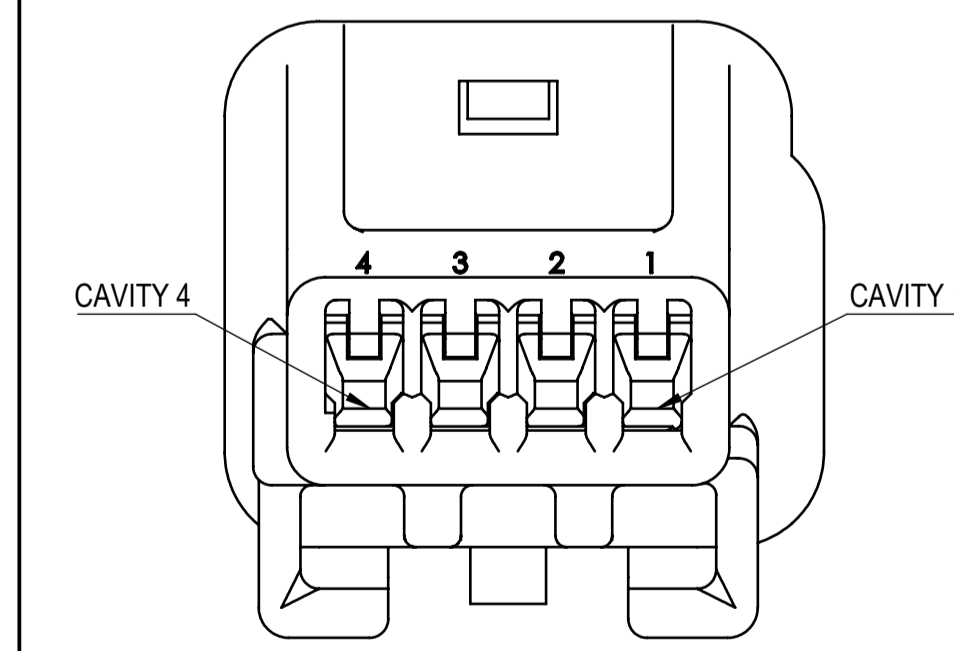
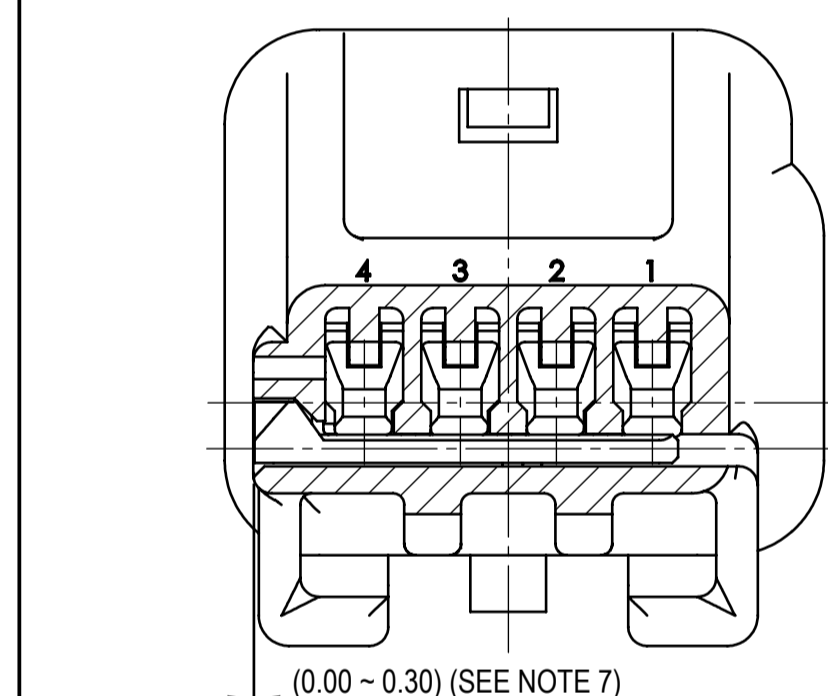
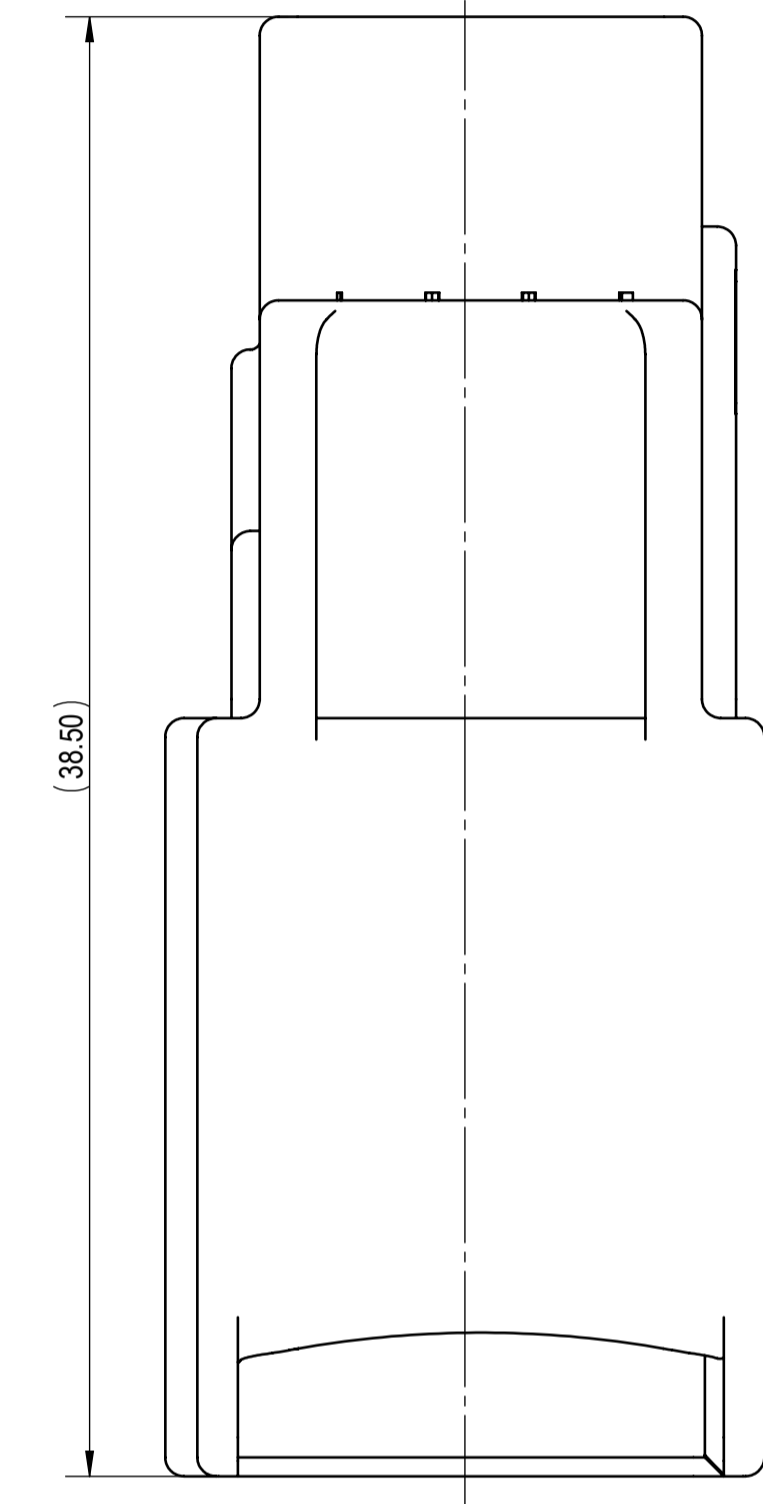


SUB-ASSEMBLY PART NUMBER	NO.	PART NUMBER	PART NAME	MATERIAL	COLOR	QUANTITY
7282-6560-40	①	7182-6560-40	4P 0.64mm UNSEALED MALE CONNECTOR HOUSING	PBT-GF15	LIGHT GRAY	1
	②	7158-5739-90	4P 0.64mm UNSEALED CONNECTOR ISL	PBT-GF15	BLUE	1



RECOMMENDED PASS-THROUGH HOLE DIMENSION (1mm CLEARANCE ALL AROUND) (2/1)



- NOTES:
- PARTS MUST BE PURCHASED FROM YAZAKI.
  - PARTS MUST BE FREE OF FLASH AND IMPERFECTIONS THAT AFFECT FUNCTION.
  - APPLICABLE TERMINAL: SEE 7114-4720-02:R DRAWING (0.64 YESC UNSEALED) MAX WIRE OD: 2.20mm
  - MATING PART NUMBER: 7283-6560-40, ETC.
  - PART SATISFIES USCAR 2, REV. 3, APRIL 2001, (T2/V1/S1)
  - PART TO COMPLY WITH YPES-31-038 REQUIREMENTS.
  - THIS DIMENSION SHOWS THE PRE-SET POSITION OF THE ISL.
  - THIS DRAWING IS TO BE USED FOR INTERNAL YAZAKI PSW SUBMISSION.
  - CLIP SLOT: 11mm CLIP SLOT. (BASED ON USCAR 11mm CLIP SLOT, EWCAP-005-11, REV. C)
  - HANDLING MANUAL NUMBER: YPES-15-563

LET	DATE	REVISION RECORD	NO.	CHKD
-	07-12-2018	NEW	C18-A619	A.C.

GENERAL TOLERANCE											
A	±0.15	±0.20	±0.30	±0.50	±0.75	R5 MAX	R10 MAX	R20 MAX	R20 OVR	ANGLE	ECCENT
B	±0.20	±0.30	±0.55	±0.95	±1.40	±0.20	±0.30	±0.50	±2.50	±3°	0.1
C	±0.30	±0.50	±0.80	±1.40	±2.00					±3°	0.15
SPECIFIED											MASS (3.90) g

CUSTOMER		CUSTOMER DWG. NO.		MTRL SPEC.		TREAT. & FIN.	
CUSTOMER PART NO.		CUSTOMER DWG. NO.		SEE TABLE		N/A	
OFFICE YNA		TRIAL PART NO.		NAME 4P 0.64mm YESC UNSEALED MALE			
VENDOR		VENDOR NO.		CONNECTOR SUB-ASSEMBLY			
DWG TYPE R		DWG SOURCE 7282-6560-40:M		DWG DATE 07-12-2018		PART NO. 7282-6560-40	
APPROVED		CHECKED		CHECKED		CH. CODE	
						DWG NO. 7282-6560-40:R	
						YAZAKI CORPORATION	
				DESIGN DRAWN		NORM REZMER ALEJANDRO CALLEROS	
				08-14-2000		07-13-2018	