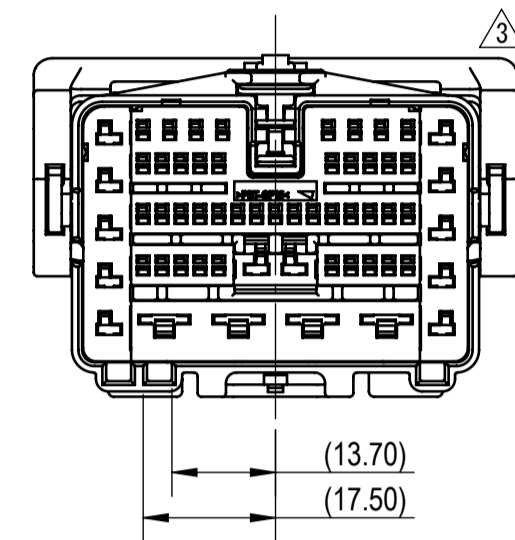
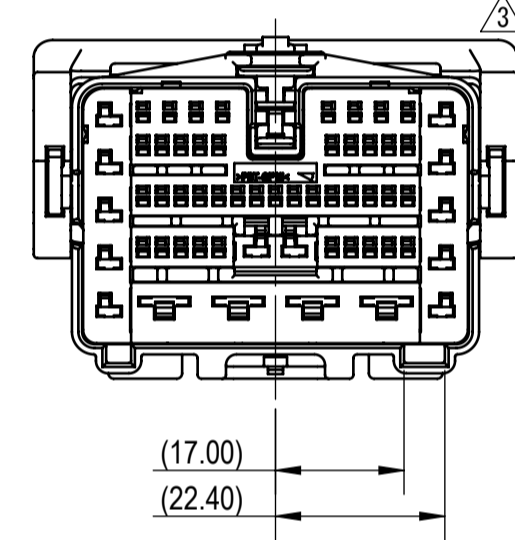


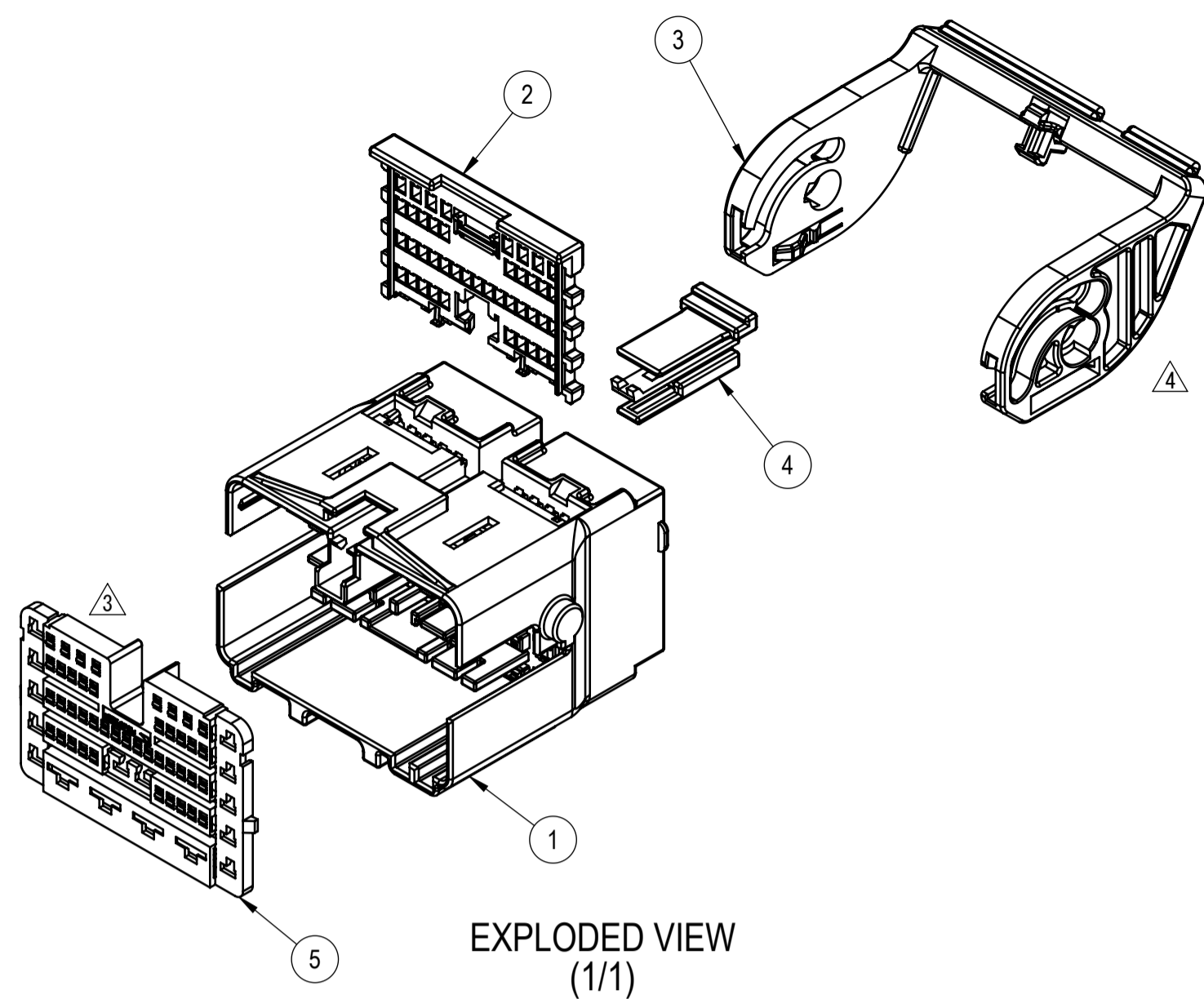
7288-7295-30
KEYWAY A



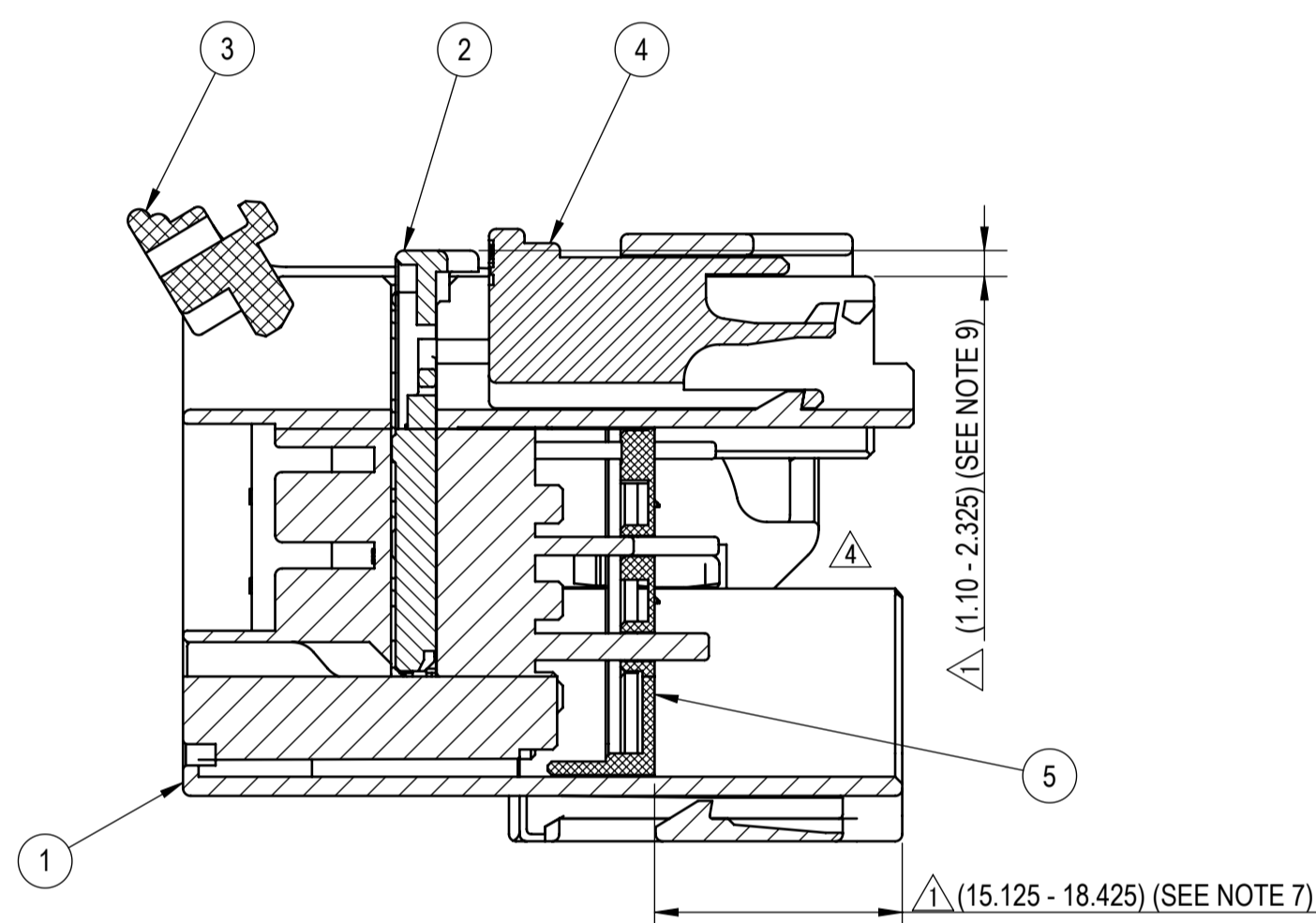
7288-7296-40
KEYWAY B



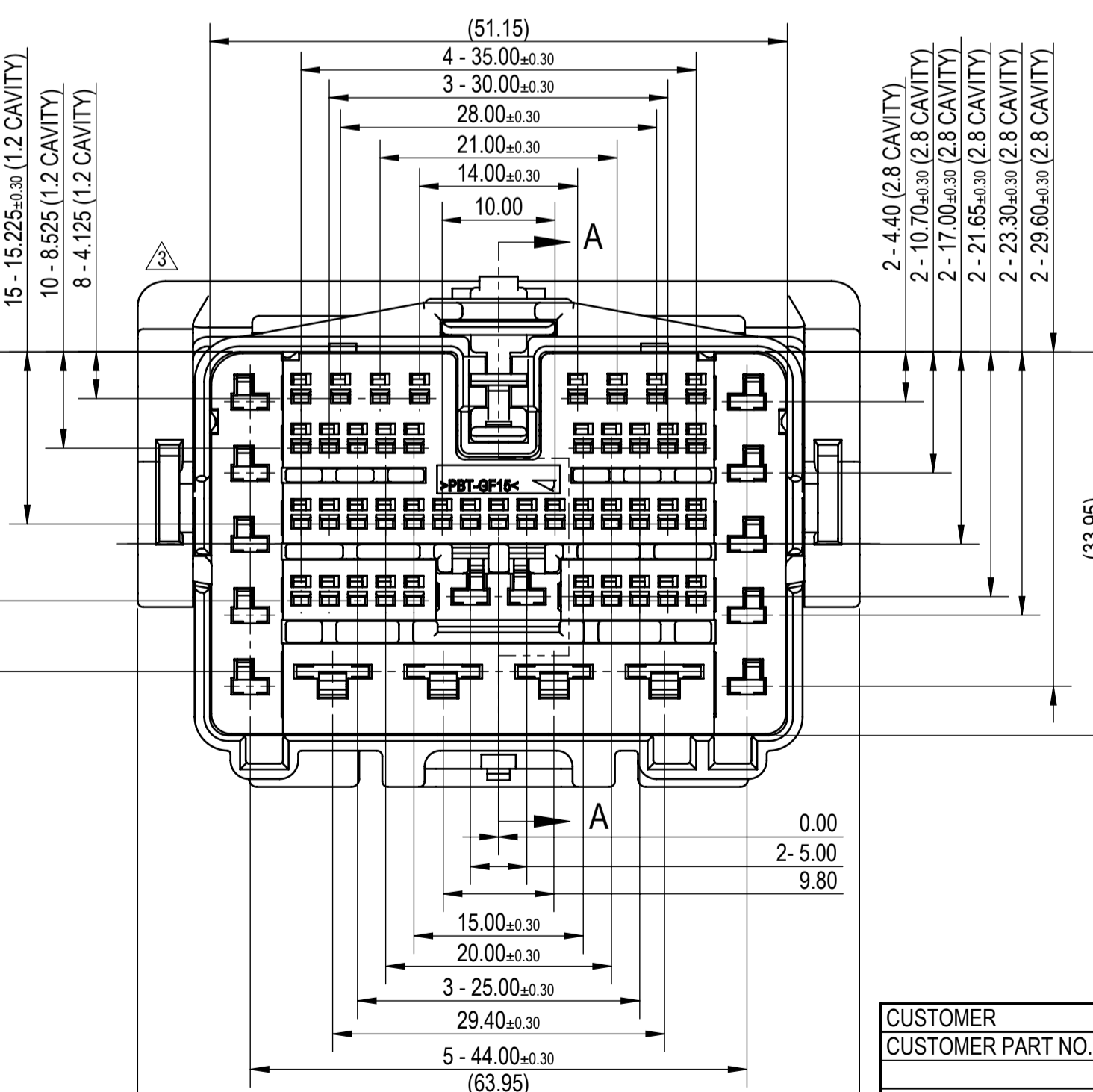
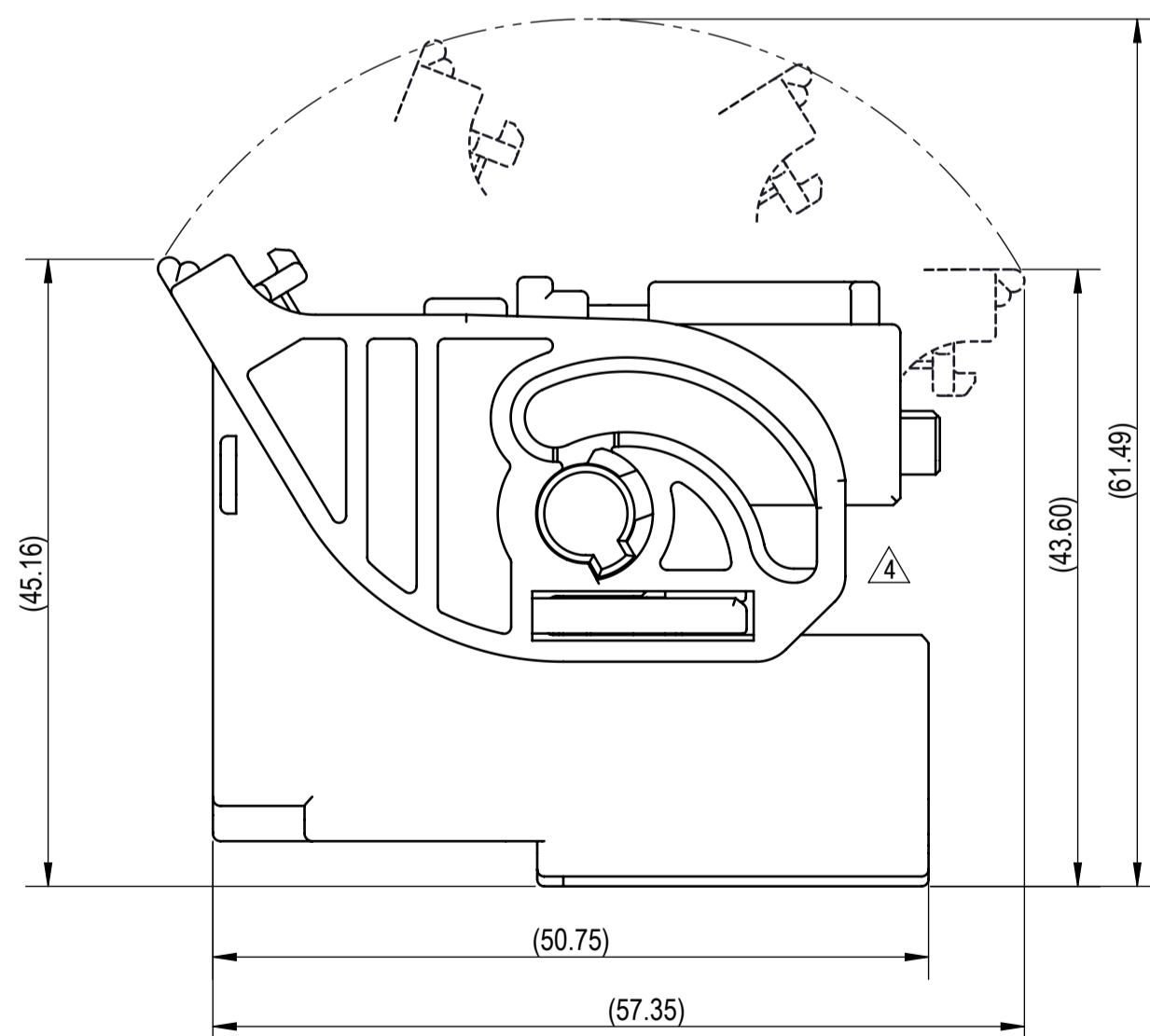
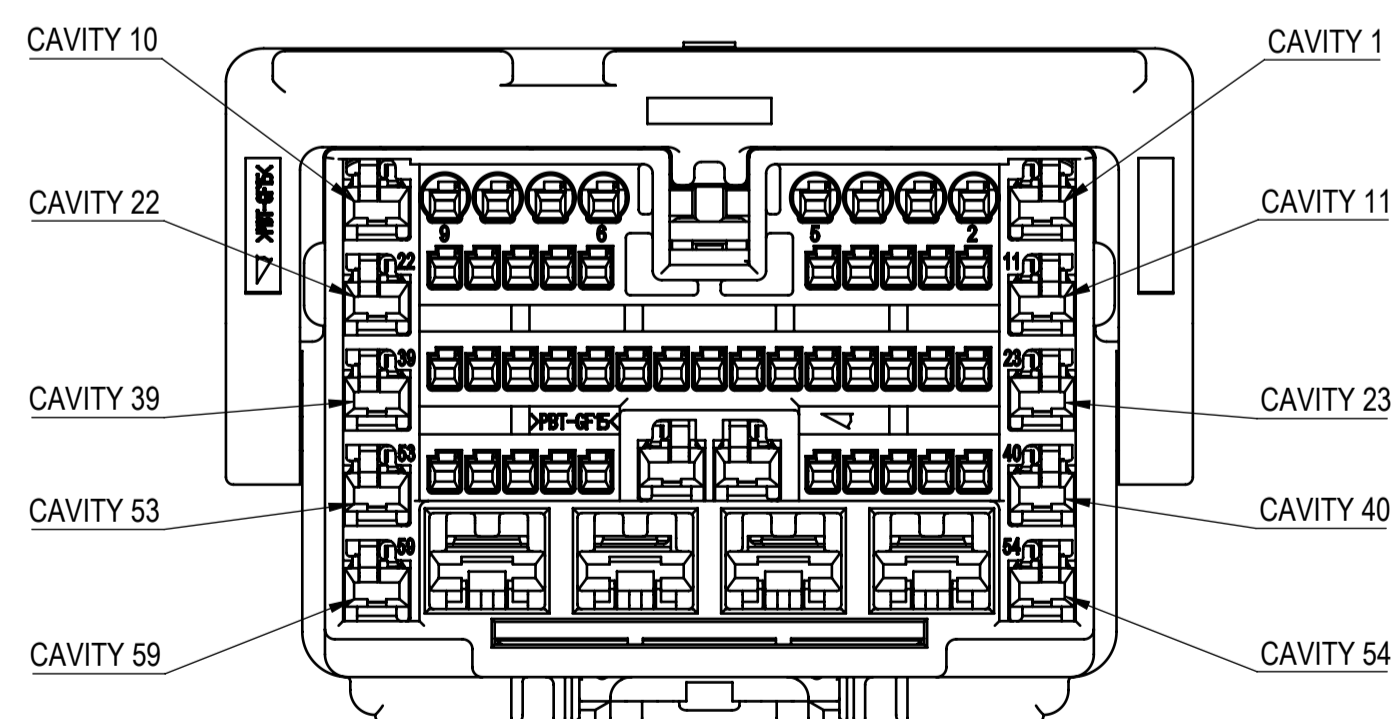
7297-2707-10
KEYWAY C



EXPLODED VIEW
(1/1)



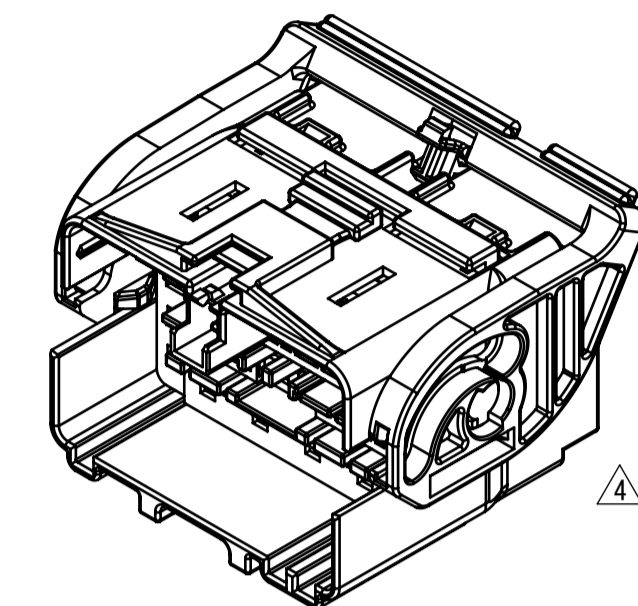
SECTION A-A



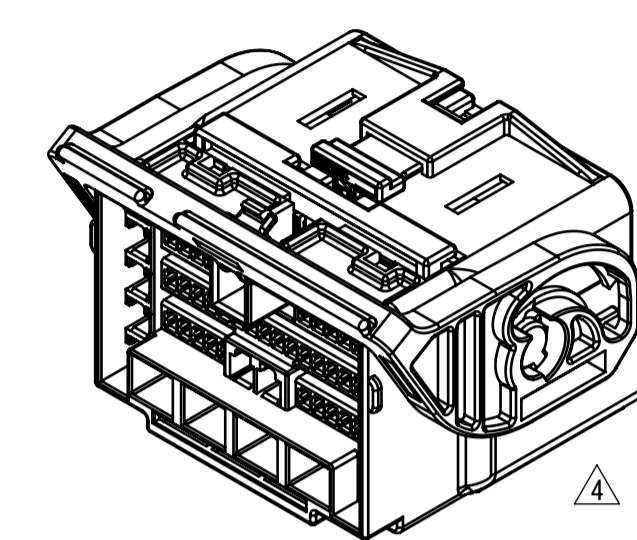
SUB-ASSEMBLY PART NUMBER		NO.	PART NUMBER	PART NAME	MATERIAL	COLOR	QUANTITY
SEE TABLE 2		①	SEE TABLE 2	59P (43P 1.2mm + 12P 2.8mm + 4P 6.3mm) HYBRID UNSEALED MALE CONNECTOR HOUSING	PBT-GF15	SEE TABLE 2	1
		②	7172-1357	59P (43P 1.2mm + 12P 2.8mm + 4P 6.3mm) UNSEALED MALE CONNECTOR ISL	PBT-GF15	NATURAL	1
		③	7173-3440	59P (43P 1.2mm + 12P 2.8mm + 4P 6.3mm) UNSEALED MALE CONNECTOR LEVER	PBT-GF15	NATURAL	1
		④	7172-0955-50	30P (24P 1.2mm + 4P 2.8mm + 2P 6.3mm) UNSEALED MALE CONNECTOR CPA	PBT-GF15	RED	1
		⑤	7172-1355	59P (43P 1.2mm + 12P 2.8mm + 4P 6.3mm) UNSEALED MALE CONNECTOR MBS	PBT-GF15	NATURAL	1

SUB-ASSEMBLY PART NUMBER	HOUSING PART NUMBER	KEYWAY	COLOR	YAZAKI INLINE MATING PART NUMBER
7288-7295-30	7188-7295-30	A	BLACK	7289-7293-30
7288-7296-40	7188-7296-40	B	LIGHT GRAY	7289-7294-40
7297-2707-10	7197-2707-10	C	DARK GRAY	7289-7292-10

RECOMMENDED PASS-THROUGH HOLE DIMENSION
(1mm CLEARANCE ALL AROUND)
(1/1)



FRONT ISOMETRIC VIEW
(1/1)



REAR ISOMETRIC VIEW
(1/1)

- NOTES:
- PARTS MUST BE PURCHASED FROM YAZAKI.
 - PARTS MUST BE FREE OF FLASH AND IMPERFECTIONS THAT AFFECT FUNCTION.
 - APPLICABLE TERMINAL: SEE 7195-1371-02-R DRAWING (YCO 1.2mm) OR 33101338 DRAWING (APTIV 1.2mm OCS) OR C-1718398 DRAWING (TYCO 1.2mm MCON CB)
MAX WIRE OD: 2.40mm (CAVITIES 2-9)
MAX WIRE OD: 1.90mm (CAVITIES 12-21, 24-38, 41-45, 48-52)
SEE 7114-4110-02-R DRAWING (YESC 2.8mm)
MAX WIRE OD: 3.70mm (CAVITIES 1, 10-11, 22-23, 39-40, 46-47, 53-54, 59)
SEE 7114-4120-02-R DRAWING (YESC 6.3mm)
MAX WIRE OD: 4.30mm (CAVITIES 55-58)
 - MATING PART NUMBER: SEE TABLE 2.
 - PART SATISFIES FCA PF.90012, CHANGE LEVEL A, APRIL 2014, (T2/V1/S1/MF3)
 - PART TO COMPLY WITH YPES-31-038 REQUIREMENTS.
 - THIS DIMENSION SHOWS THE PRE-SET POSITION OF THE MBS. MBS TO REMAIN IN PRE-SET POSITION UNTIL FIRST CONNECTOR MATING. REFER TO HANDLING MANUAL.
 - THIS DIMENSION SHOWS THE PRE-SET POSITION OF THE CPA.
 - THIS DIMENSION SHOWS THE PRE-SET POSITION OF THE ISL.
 - CLIP SLOT: YAZAKI 17mm CLIP SLOT.
 - HANDLING MANUAL NUMBER: YPES-15-1702E
 - CONNECTOR IS CAPABLE OF ACCEPTING A DRESS COVER.
 - THIS DRAWING IS TO BE USED FOR INTERNAL YAZAKI PSW SUBMISSION.

DATE	REVISION RECORD	NO.	CHKD
02-10-2023	CHANGED FORM IN LEVER	C23-A062	E.T
08-17-2021	REVISED 1.2 APPLICABLE TERMINAL, REVISED 2.8 MAX WIRE OD, REVISED 6.3 MAX WIRE OD, REMOVED EXCEPTIONS AND MBS SHAPE CHANGED	C21-A607	K.M
01-09-2020	REVISED 1.2 APPLICABLE TERMINAL	C20-A036	A.C.
10-31-2018	ADDED C KEYWAY	C18-AA63	H.A.
01-20-2017	NEW	C17-A070	D.Z.

GENERAL TOLERANCE											
	10MAX	50MAX	100MAX	250MAX	250OVR	R5 MAX	R10 MAX	R20 MAX	R20 OVR	ANGLE	ECCENT
A	±0.15	±0.2	±0.3	±0.5	±0.75					±3°	0.1
B	±0.2	±0.3	±0.55	±0.95	±1.4	±0.2	±0.3	±0.5	±2.5	±3°	0.1
C	±0.3	±0.5	±0.8	±1.4	±2					±3°	0.15
SPECIFIED										MASS	(58.9)g

CUSTOMER		MATERIAL SPEC.		TREAT. & FIN.	
CUSTOMER PART NO.	CUSTOMER DWG NO.	SEE TABLE 1		N/A	
OFFICE	TRIAL PART NO.	NAME 59P (43Px1.2mm + 12Px2.8mm + 4Px6.3mm)			
YNA		UNSEALED MALE CONNECTOR SUB-ASSEMBLY			
VENDOR		PART NO.	7288-7295-30, ETC.		
		DWG NO.	7288-7295-30:R		
		YAZAKI CORPORATION			
		DATE	02-10-2023		