

**MATERIALS AND FINISHES:**

BODY, JAM NUT: BRASS  
FINISH: SEE TABLE

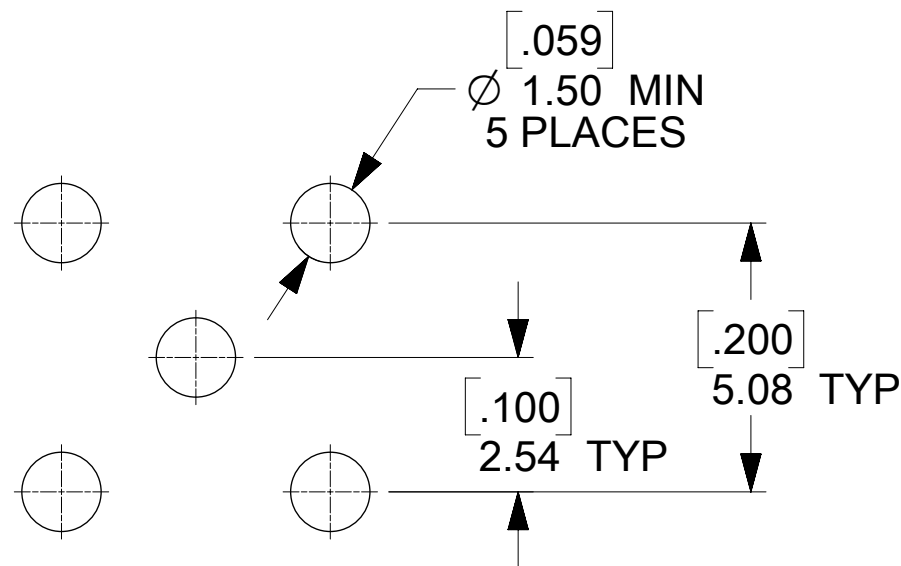
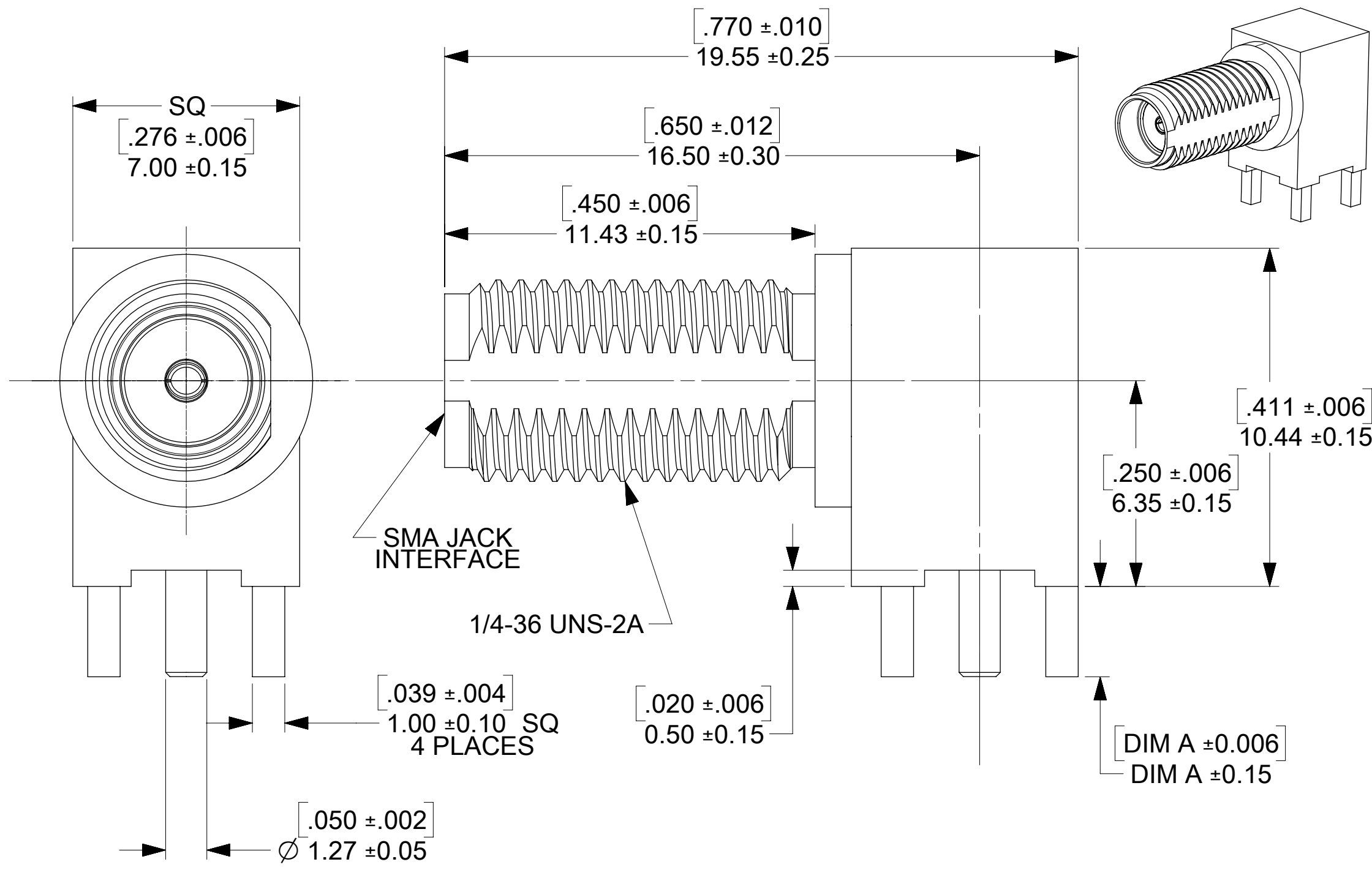
CENTER CONTACT: BERYLLIUM COPPER  
PLATED GOLD

INSULATOR: TEFLON

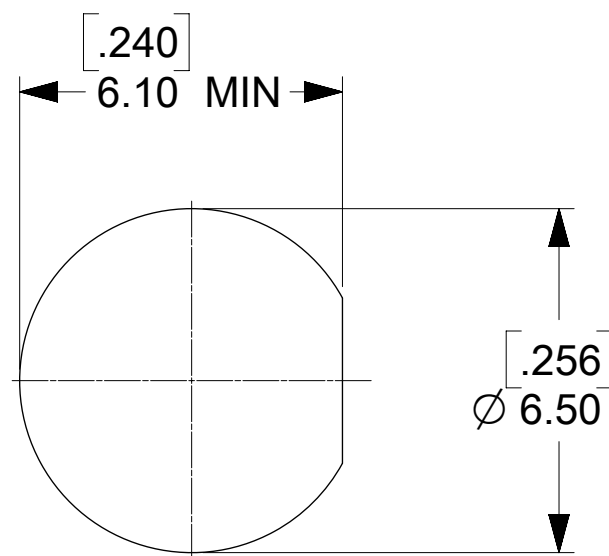
LOCKWASHER: PHOSPHOR BRONZE  
FINISH: SEE TABLE

**ELECTRICAL REQUIREMENTS:**

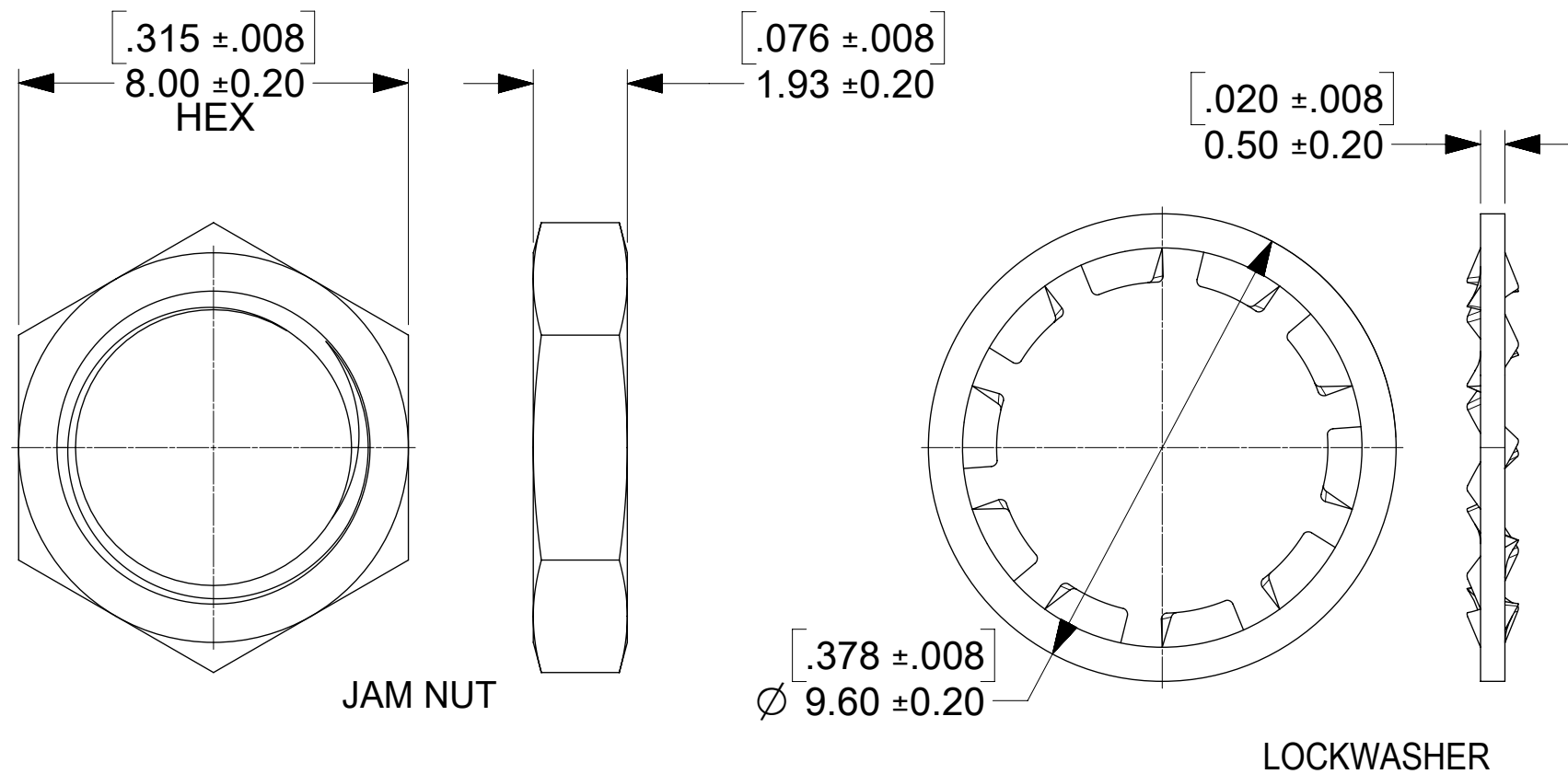
- VOLTAGE STANDING WAVE RATIO
  - 1.1(MAX) @0-6GHz.
  - 1.5(MAX) @6-12GHz.
  - 1.8(MAX) @12-18GHz.
- RF INSERTION LOSS:
  - 0.1(MAX) @0-6GHz.
  - 0.4(MAX) @6-12GHz.
  - 0.7(MAX) @12-18GHz.



RECOMMENDED PCB LAYOUT



RECOMMENDED PANEL CUTOUT



JAM NUT

LOCKWASHER

PS-89675-368	SOLDER SPEC PROFILE
PS-89675-346	ELECTRO/MECH PERFORM.
SPECIFICATION	DESCRIPTION

SEE SD-73251-496 FOR PART NO. CONTINUATION

73251-2209	GOLD FLASH / STANDARD TRAY	3.94	.155
73251-2208	GOLD FLASH/STANDARD TRAY W/O WASHER AND NUT	3.94	.155
73251-2207	73251-2201 PACKAGED ONE PER BAG	2.79	.110
73251-2206	SAME AS 73251-2201 EXCEPT COMMERCIAL CONTACT	2.79	.110
73251-2205	SAME AS 73251-2200 EXCEPT COMMERCIAL CONTACT	2.79	.110
73251-2204	GOLD FLASH/STANDARD TRAY W/O WASHER AND NUT	2.79	.110
73251-2203	GOLD FLASH / STANDARD TRAY (54 CAVITY)	2.79	.110
73251-2202	73251-2201 PACKAGED IN SMALL TRAY (20 CAVITY)	2.79	.110
73251-2201	GOLD / STANDARD TRAY	2.79	.110
73251-2200	NICKEL / STANDARD TRAY	2.79	.110
PART NO.	PLATING (BODY, NUT, LOCKWASHER) AND PACKAGING	mm	IN

DIM A

FUNCTIONAL SYMBOLS	THIS DRAWING CONTAINS INFORMATION THAT IS PROPRIETARY TO MOLEX ELECTRONIC TECHNOLOGIES, LLC AND SHOULD NOT BE USED WITHOUT WRITTEN PERMISSION		
	DIMENSION UNITS	SCALE	CURRENT REV DESC: ADD SOLDER SPEC NO. PER EWR14716-B
$\nabla_A = 0$	mm	NTS	EC NO: 675413 DRWN: CWEI02 CHK'D: YCHENG APPR: YCHENG 2021/08/24 2021/08/26 2021/08/26
$\nabla_C = 0$	GENERAL TOLERANCES (UNLESS SPECIFIED)		
$\nabla_P = 0$	ANGULAR TOL $\pm$ °		INITIAL REVISION: DRWN: AROBERTSON APPR: JWIENER 2012/11/21 2012/11/21
DIVISIONAL SYMBOLS	4 PLACES $\pm$	3 PLACES $\pm$	
	2 PLACES $\pm$	1 PLACE $\pm$	DOCUMENT NUMBER <b>SD-73251-220</b> DOC TYPE PSD DOC PART 000 REVISION D14
	0 PLACES $\pm$		
DRAFT WHERE APPLICABLE MUST REMAIN WITHIN DIMENSIONS	THIRD ANGLE PROJECTION	DRAWING	MATERIAL NUMBER
		C-SIZE	73251
		SERIES	CUSTOMER
			GENERAL MARKET
			SHEET NUMBER
			1 OF 1

**molex**

SMA JACK, R/A PCB 50 OHM  
SMA-J/RA/PCB EWR-2144

PRODUCT CUSTOMER DRAWING

**MATERIALS AND FINISHES:**

BODY, JAM NUT: BRASS  
FINISH: SEE TABLE

CENTER CONTACT: BERYLLIUM COPPER  
PLATED GOLD

INSULATOR: TEFLON

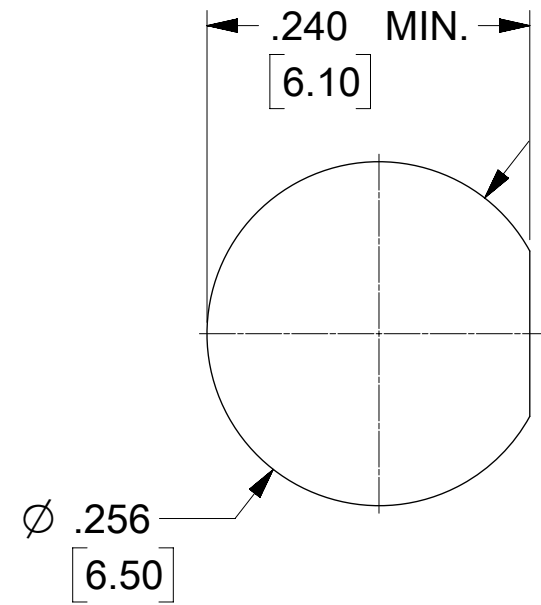
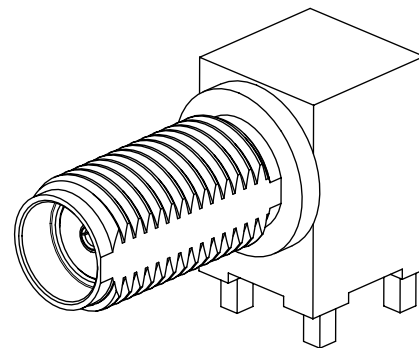
LOCK WASHER: PHOSPHOR BRONZE  
FINISH: SEE TABLE

PACKAGING: SEE TABLE

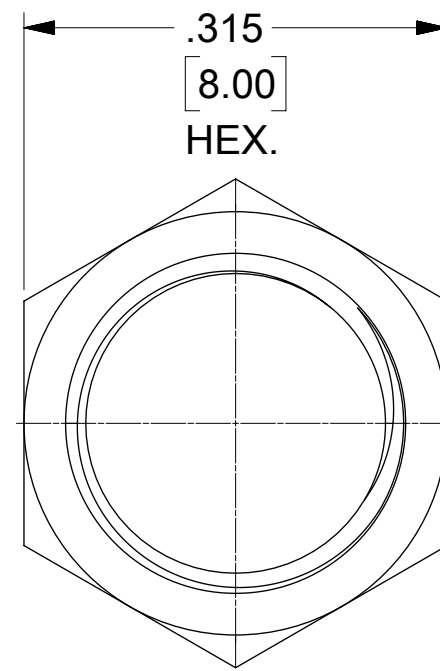
**ELECTRICAL REQUIREMENTS:**

- VOLTAGE STANDING WAVE RATIO
  - 1.1(MAX) @0-6GHz.
  - 1.5(MAX) @6-12GHz.
  - 1.8(MAX) @12-18GHz.
- RF INSERTION LOSS:
  - 0.1(MAX) @0-6GHz.
  - 0.4(MAX) @6-12GHz.
  - 0.7(MAX) @12-18GHz.

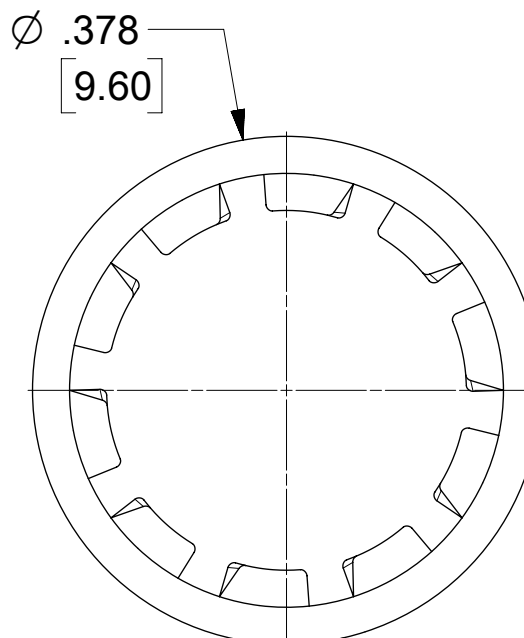
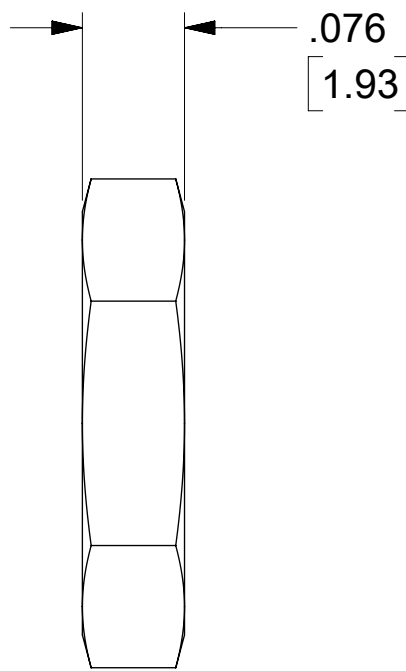
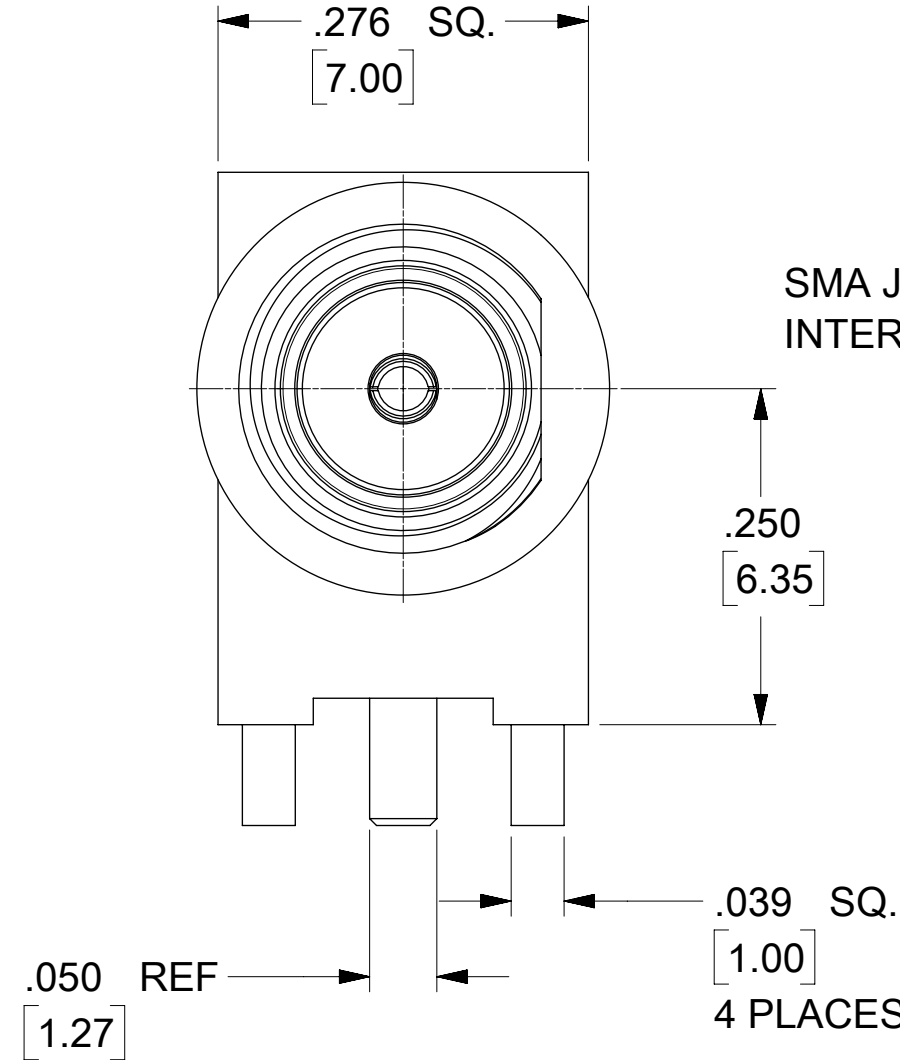
73251-4966	BAG
73251-4965	TRAY
73251-4964	
73251-4963	
73251-4962	
73251-4961	
73251-4960	
PART NO.	PACKAGING



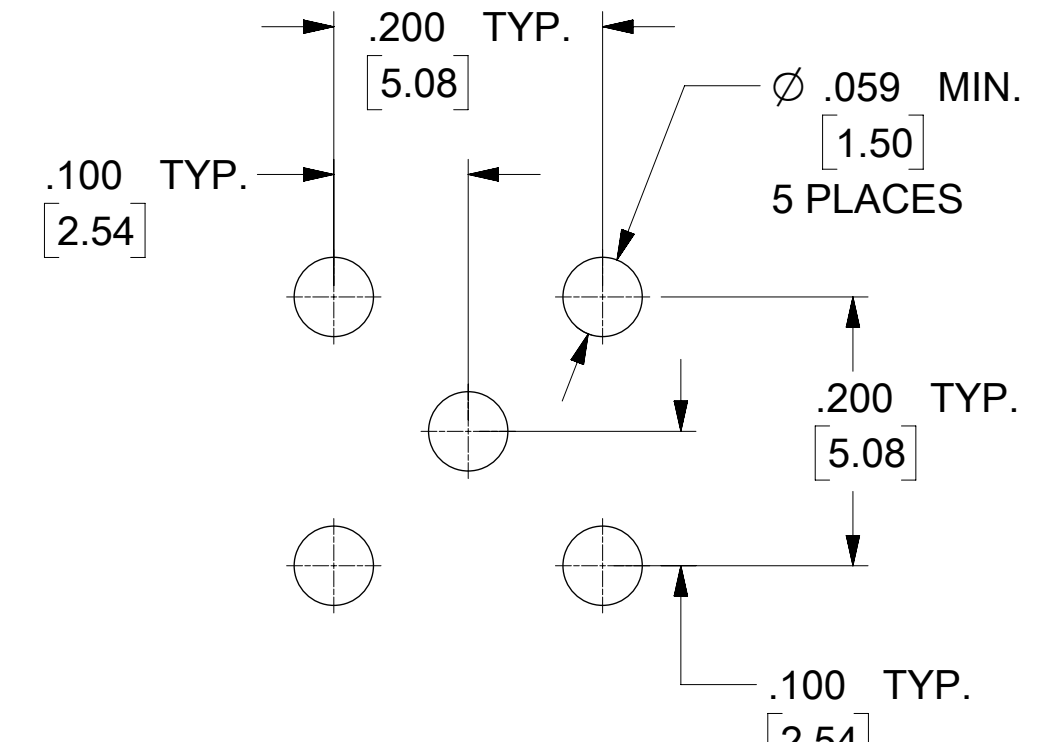
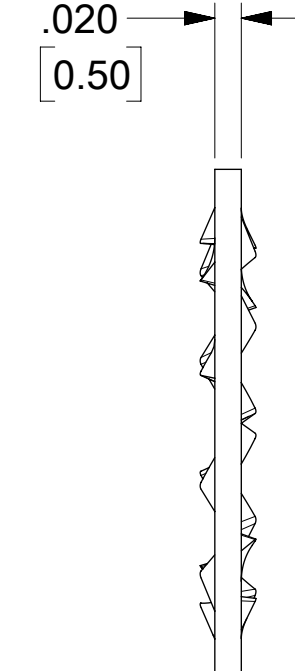
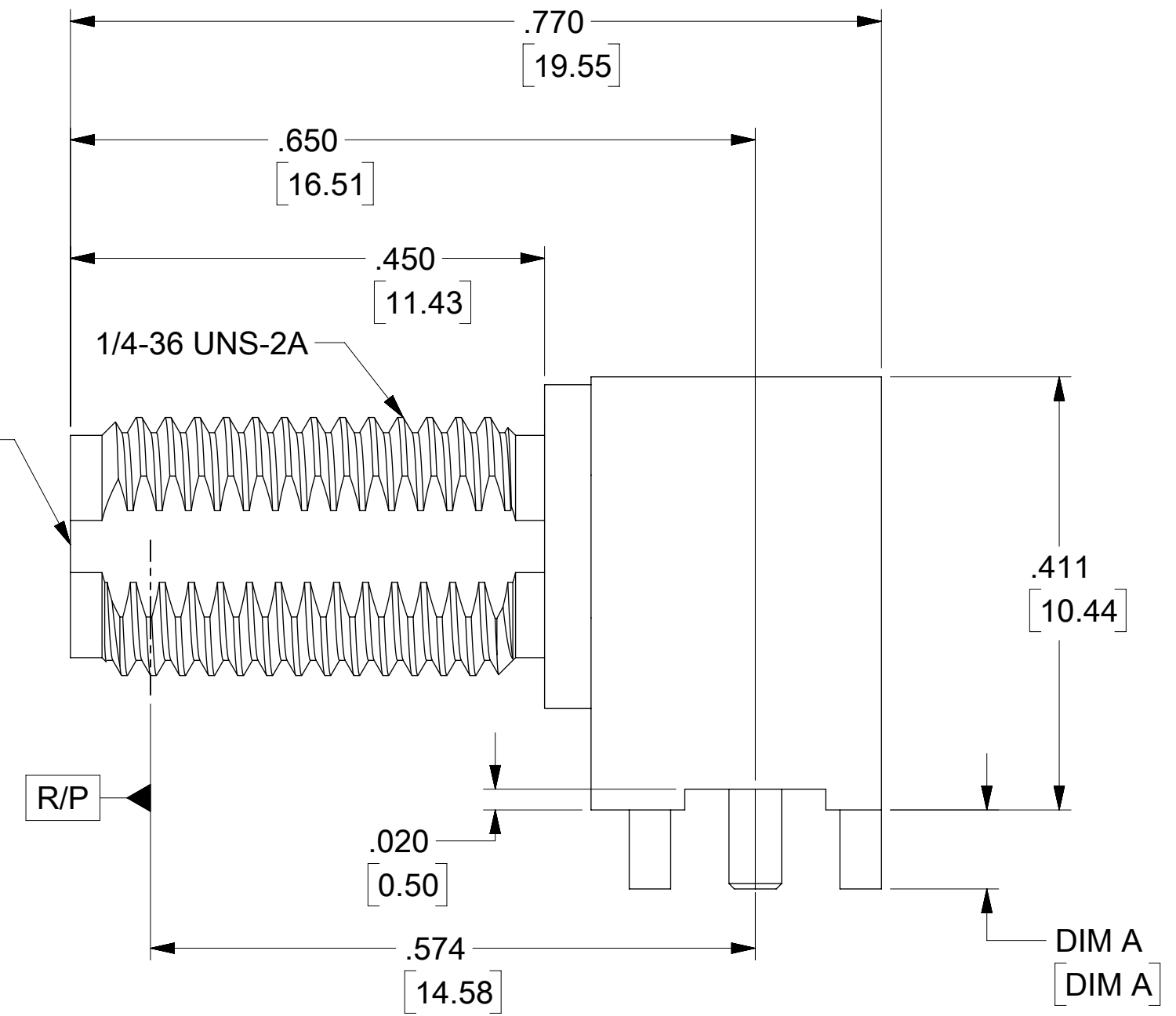
PANEL CUTOUT  
.135 / 3.42 MAX THICKNESS



JAM NUT



LOCK WASHER



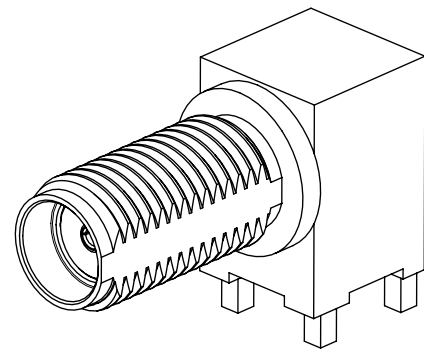
RECOMMENDED PCB LAYOUT

SD-73251-496 IS CONTINUATION FOR SD-73251-220

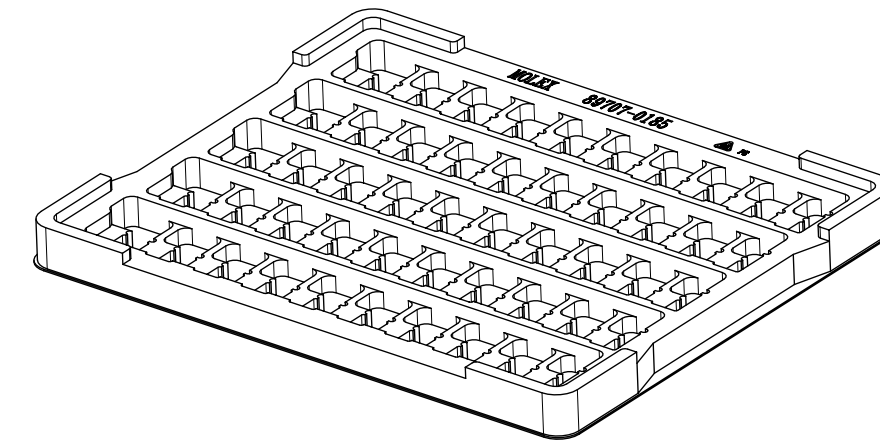
PART NO.	JAM NUT QTY	WASHER QTY	IN / MM	BODY PLATING	CONTACT PLATING	JAM NUT & LOCK WASHER PLATING
73251-4966	1	1	.110 / 2.79	NICKEL (100μ-in MIN)	GOLD (30μ-in MIN) OVER NICKEL(100μ-in MIN)	NICKEL (100μ-in MIN)
73251-4965	2	1	.110 / 2.79	GOLD (5μ-in MIN) OVER NICKEL (50μ-in MIN)	GOLD (30μ-in MIN) OVER NICKEL(100μ-in MIN)	GOLD (1μ-in MIN) OVER NICKEL (50μ-in MIN)
73251-4964	1	1	.075 / 1.91	GOLD (5μ-in MIN) OVER NICKEL (50μ-in MIN)	GOLD (30μ-in MIN) OVER NICKEL(100μ-in MIN)	GOLD (1μ-in MIN) OVER NICKEL (50μ-in MIN)
73251-4963	NOT INCLUDED	NOT INCLUDED	.110 / 2.79	GOLD (5μ-in MIN) OVER NICKEL (50μ-in MIN)	GOLD (30μ-in MIN) OVER NICKEL(100μ-in MIN)	-----
73251-4962	1	NOT INCLUDED	.110 / 2.79	NICKEL (100μ-in MIN)	GOLD (30μ-in MIN) OVER NICKEL(100μ-in MIN)	NICKEL (100μ-in MIN)
73251-4961	2	1	.155 / 3.94	GOLD (1μ-in MIN) OVER NICKEL (50μ-in MIN)	GOLD (1μ-in MIN) OVER NICKEL (50μ-in MIN)	GOLD (1μ-in MIN) OVER NICKEL (50μ-in MIN)
73251-4960	1	1	.075 / 1.91	GOLD (1μ-in MIN) OVER NICKEL (50μ-in MIN)	GOLD (1μ-in MIN) OVER NICKEL (50μ-in MIN)	GOLD (1μ-in MIN) OVER NICKEL (50μ-in MIN)

PS-89675-3460	PRODUCT SPECIFICATION
MIL-STD-348A, FIG. 310.2	INTERFACE
SPECIFICATION	DESCRIPTION

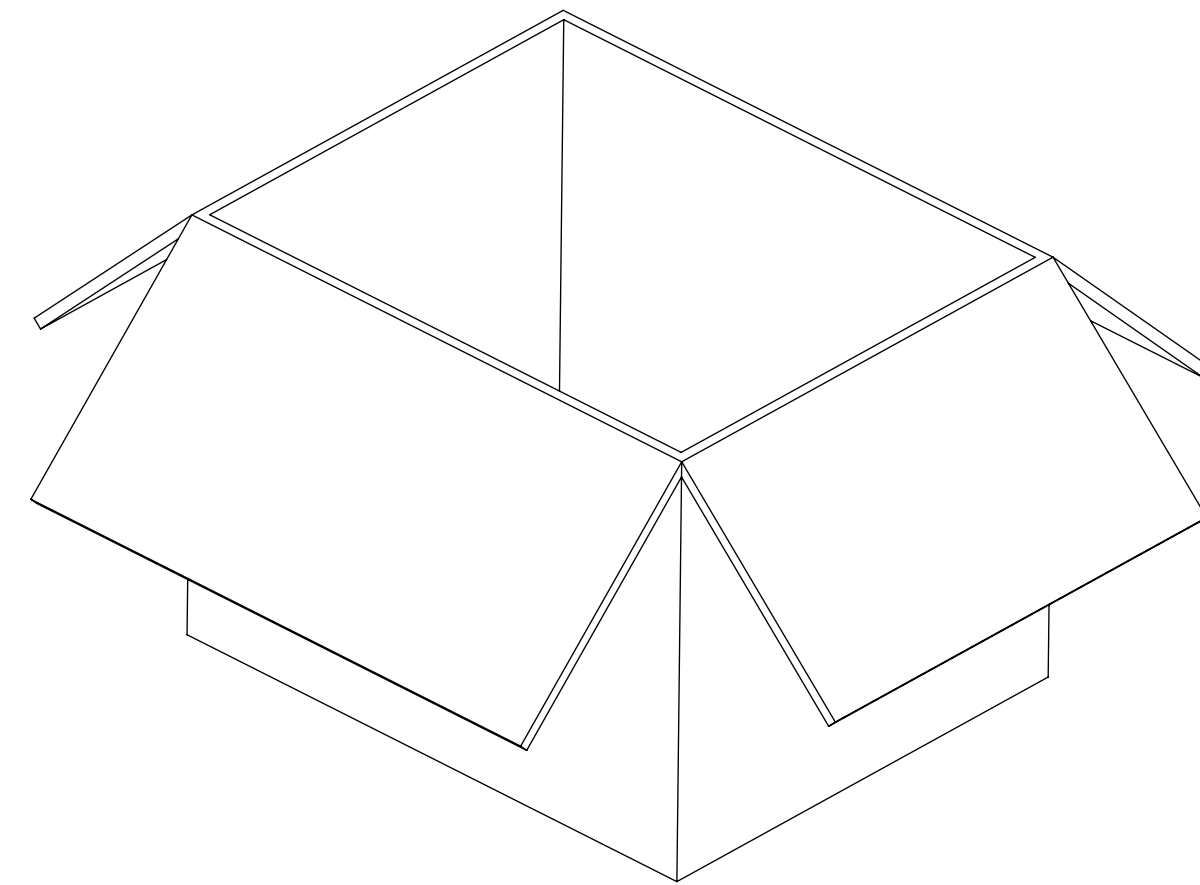
FUNCTIONAL SYMBOLS		THIS DRAWING CONTAINS INFORMATION THAT IS PROPRIETARY TO MOLEX ELECTRONIC TECHNOLOGIES, LLC AND SHOULD NOT BE USED WITHOUT WRITTEN PERMISSION	
FA = 0	INCH/MM	SCALE	CURRENT REV DESC:
EA = 0	GENERAL TOLERANCES (UNLESS SPECIFIED)	NTS	EWR-14242-J ADDED LABEL FORMAT FOR 73251-4966
EP = 0	ANGULAR TOL ± °		EC NO: 659677
	4 PLACES ±		DRWN: JSU18 2021/03/24
	3 PLACES ±		CHK'D: YCHENG 2021/04/06
	2 PLACES ±		APPR: YCHENG 2021/04/06
	1 PLACE ±		INITIAL REVISION:
	0 PLACES ±		DRWN: JLEE02 2014/03/28
			APPR: WSPINK 2014/03/28
DIVISIONAL SYMBOLS		THIRD ANGLE PROJECTION	DRAWING SERIES
DRAFT WHERE APPLICABLE MUST REMAIN WITHIN DIMENSIONS		C-SIZE	73251
DOCUMENT STATUS		MATERIAL NUMBER	CUSTOMER
P1	RELEASE DATE 2021/04/06 01:47:34	SEE TABLE	GENERAL MARKET
		DOC TYPE	DOC PART
		SD-73251-496	000
		PSD	B9
		SHEET NUMBER	1 OF 4



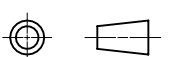
PART NO : 73251-4960  
 PART NO: 73251-4962  
 PART NO: 73251-4963  
 PART NO: 73251-4964  
 PART NO: 73251-4965



50 SET PER TRAY  
 P/N: 89707-0185

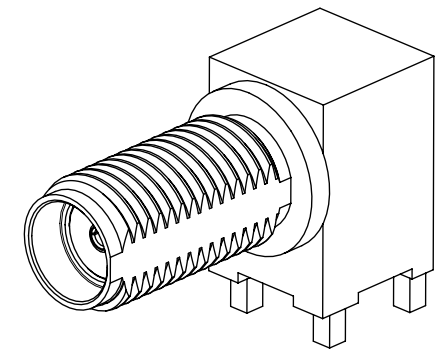


1400 SET PER OUTER CARTON BOX  
 P/N: 89499-9027

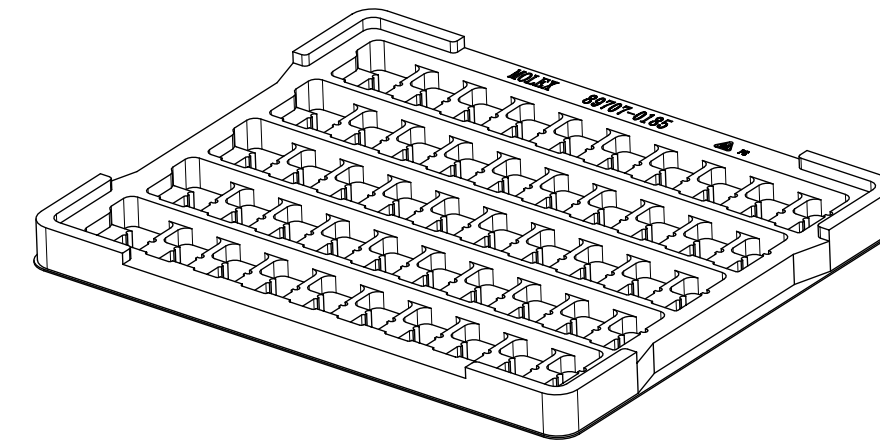
FUNCTIONAL SYMBOLS	THIS DRAWING CONTAINS INFORMATION THAT IS PROPRIETARY TO MOLEX ELECTRONIC TECHNOLOGIES, LLC AND SHOULD NOT BE USED WITHOUT WRITTEN PERMISSION									
	DIMENSION UNITS	SCALE	CURRENT REV DESC:							
$\frac{E}{A} = 0$	INCH/MM	NTS	EWR-14242-J ADDED LABEL FORMAT FOR 73251-4966							
$\frac{E}{C} = 0$	GENERAL TOLERANCES (UNLESS SPECIFIED)		EC NO: 659677							
$\frac{E}{P} = 0$	ANGULAR TOL ± °		DRWN: JSU18 2021/03/24							
DIVISIONAL SYMBOLS	4 PLACES ±		CHK'D: YCHENG 2021/04/06							
	3 PLACES ±		APPR: YCHENG 2021/04/06							
	2 PLACES ±		INITIAL REVISION:							
	1 PLACE ±		DRWN: JLEE02 2014/03/28							
0 PLACES ±		APPR: WSPINK 2014/03/28								
DRAFT WHERE APPLICABLE MUST REMAIN WITHIN DIMENSIONS			THIRD ANGLE PROJECTION	DRAWING	SERIES	MATERIAL NUMBER	CUSTOMER	SHEET NUMBER		
				C-SIZE	73251		GENERAL MARKET	2 OF 4		

PRODUCT CUSTOMER DRAWING			
DOCUMENT NUMBER	DOC TYPE	DOC PART	REVISION
SD-73251-496	PSD	000	B9

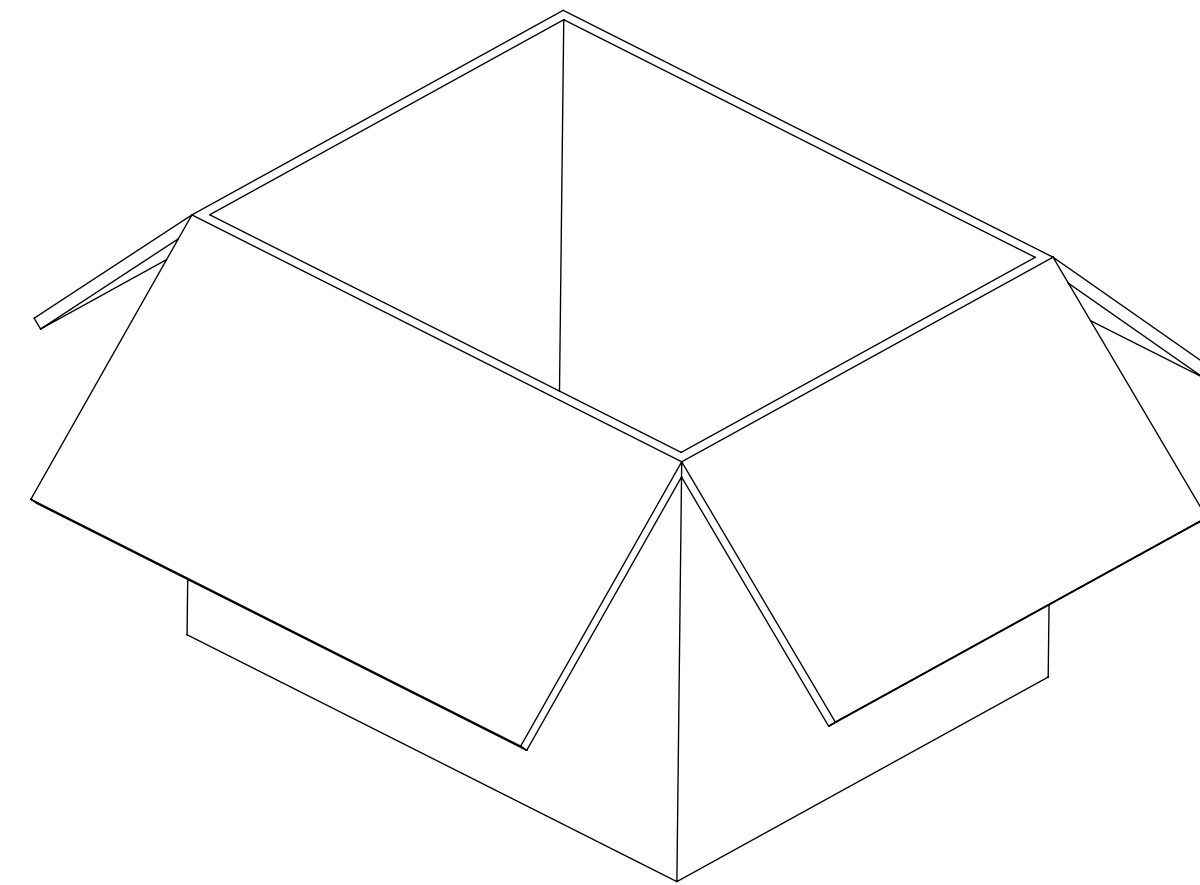
DOCUMENT STATUS	P1	RELEASE DATE	2021/04/06	01:47:34
-----------------	----	--------------	------------	----------



PART NO : 73251-4961



50 SET PER TRAY  
P/N: 89707-0185



1200 SET PER OUTER CARTON BOX  
P/N: 89499-9027

FUNCTIONAL SYMBOLS	THIS DRAWING CONTAINS INFORMATION THAT IS PROPRIETARY TO MOLEX ELECTRONIC TECHNOLOGIES, LLC AND SHOULD NOT BE USED WITHOUT WRITTEN PERMISSION												
	DIMENSION UNITS	SCALE	CURRENT REV DESC:							<b>molex</b>			
$\frac{F}{A} = 0$	INCH/MM	NTS	EWR-14242-J ADDED LABEL FORMAT FOR 73251-4966										
DIVISIONAL SYMBOLS	GENERAL TOLERANCES (UNLESS SPECIFIED)		EC NO: 659677							SMA JACK RA			
	$\frac{F}{C} = 0$	ANGULAR TOL	±	°	DRWN: JSU18 2021/03/24							BLKHD RM PCB TH SMA-J/RA/PCB, EWR-2144	
DIVISIONAL SYMBOLS	$\frac{F}{P} = 0$	4 PLACES	±		CHK'D: YCHENG 2021/04/06							PRODUCT CUSTOMER DRAWING	
		3 PLACES	±		APPR: YCHENG 2021/04/06							DOCUMENT NUMBER	
		2 PLACES	±		INITIAL REVISION:							DOC TYPE	
		1 PLACE	±		DRWN: JLEE02 2014/03/28							DOC PART	
	0 PLACES	±			APPR: WSPINK 2014/03/28							REVISION	
DRAFT WHERE APPLICABLE MUST REMAIN WITHIN DIMENSIONS		THIRD ANGLE PROJECTION		DRAWING	SERIES	MATERIAL NUMBER		CUSTOMER		SHEET NUMBER			
				C-SIZE	73251	SD-73251-496		GENERAL MARKET		3 OF 4			

DOCUMENT STATUS	P1	RELEASE DATE	2021/04/06	01:47:34
-----------------	----	--------------	------------	----------