

MATERIALS AND FINISHES

BODY, C'NUT, WASHER, CLAMP  
NUT BRASS  
PLATED NICKEL

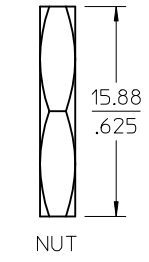
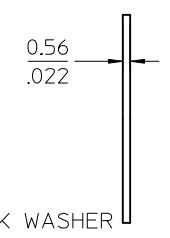
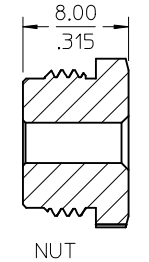
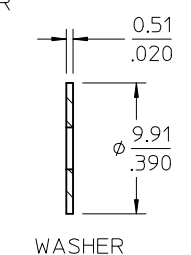
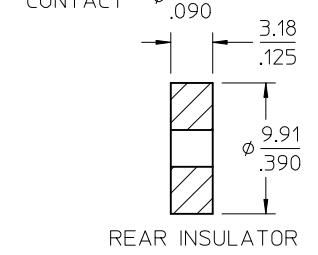
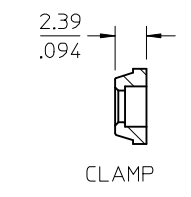
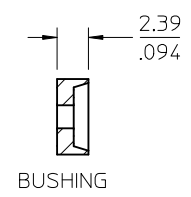
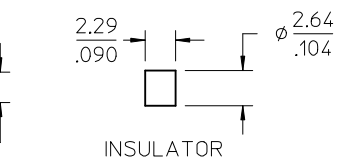
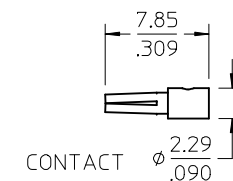
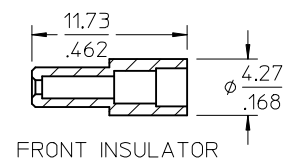
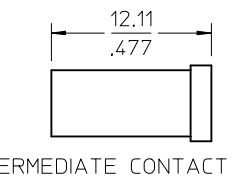
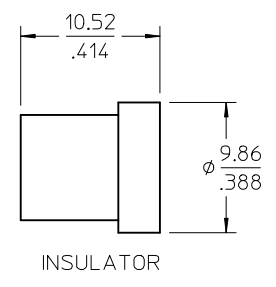
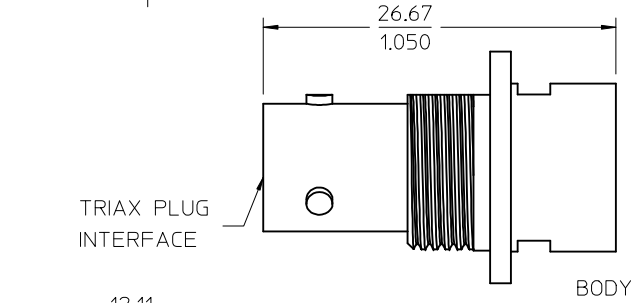
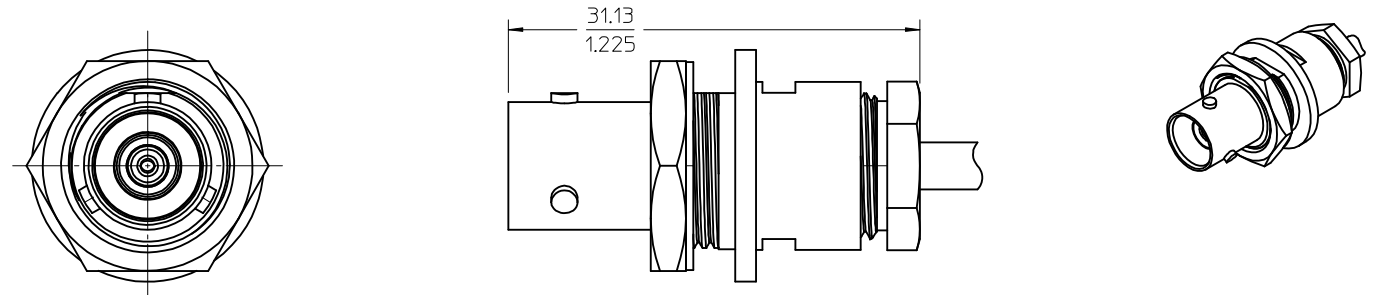
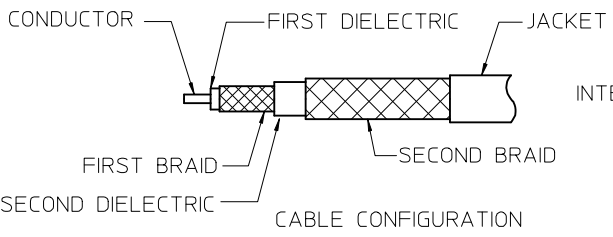
INTERMEDIATE CONTACT, BUSHING BRASS  
PLATED GOLD

INSULATOR TEFLON

CONTACT BERYLLIUM COPPER  
PLATED GOLD

LOCKWASHER PHOSPHOR BRONZE  
PLATED NICKEL

GASKET SILICONE RUBBER



SEE SHEETS 2 THRU 4	ASSEMBLY INSTRUCTIONS
PS-89675-035	PRODUCT SPECIFICATION
MIL-STD-348A, FIG. 201-1	INTERFACE
SPECIFICATION	DESCRIPTION

73415-2071	ALL PIECES OF 73415-2070 IN ONE BAG
73415-2070	BULK, 50 PCS
PART NO.	PACKAGING

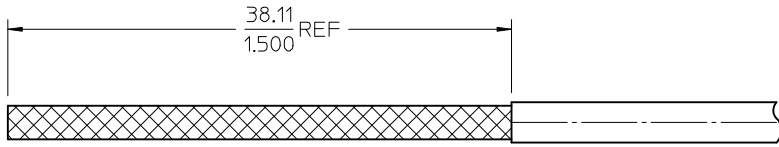
CHG: NEW RELEASE EC NO: URF2007-0489 DRWN:SSHAH 2007/06/01 CHKD:ROBERTSON 2012/09/06 APPR:JWIENER 2012/09/06	DESCRIPTION	QUALITY SYMBOLS	GENERAL TOLERANCES (UNLESS SPECIFIED)	DIMENSION STYLE	SCALE	DESIGN UNITS	THIRD ANGLE PROJECTION
	REV	DESCRIPTION	mm INCH	MM/IN	METRIC		
			4 PLACES ± --- ± ---	DRAWN BY DATE	TITLE		
			3 PLACES ± --- ± ---	CHECKED BY DATE			

2 PLACES ± --- ± ---	APPROVED BY DATE	SD-73415-207
1 PLACE ± --- ± ---	JWIENER 2012/09/06	
ANGULAR ± 2 °	MATERIAL NO.	DOCUMENT NO.
	SEE TABLE	

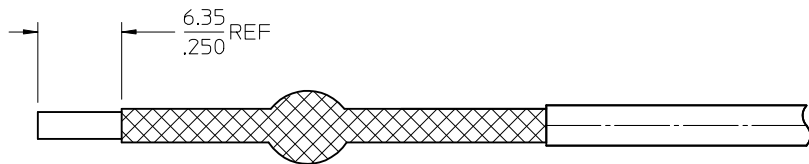
DRAFT WHERE APPLICABLE MUST REMAIN WITHIN DIMENSIONS

THIS DRAWING CONTAINS INFORMATION THAT IS PROPRIETARY TO MOLEX INCORPORATED AND SHOULD NOT BE USED WITHOUT WRITTEN PERMISSION

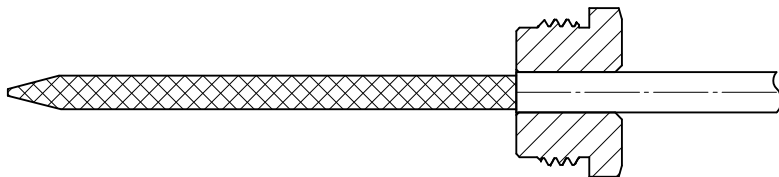
MOLEX INCORPORATED  
SD-73415-207  
SHEET NO. 1 OF 4



1. CUT OFF END OF CABLE . REMOVE JACKET TO DIMENSION SHOWN.  
DO NOT NICK BRAID

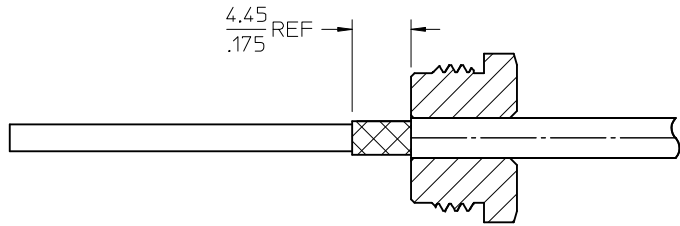


2. PULL BACK BRAID AND CUT OFF END OF CABLE TO DIMENSION SHOWN

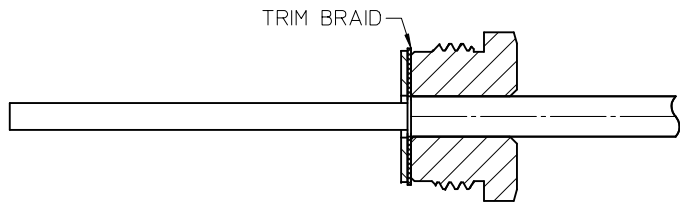


3. PULL OUTER BRAID FORWARD AND TAPER. SLIDE NUT OVER TAPERED BRAID  
MAKE SURE THAT CABLE JACKET IS POSITIONED ALONG FACE OF NUT

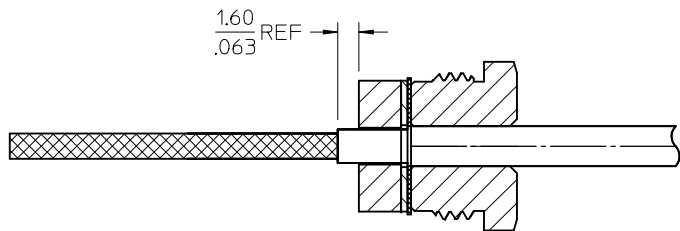
<b>CHG: SEE SHEET 1</b> EC NO: URF2007-0489 DRWN:SSHAH 2007/06/01 CHKD:ROBERTSON 2012/09/06 APPR:JWIENER 2012/09/06	QUALITY SYMBOLS =0 =0	GENERAL TOLERANCES (UNLESS SPECIFIED)		DIMENSION STYLE <b>MM/IN</b>	SCALE	DESIGN UNITS <b>METRIC</b>	THIRD ANGLE PROJECTION													
		<table border="1"> <tr> <th></th> <th>mm</th> <th>INCH</th> </tr> <tr> <td>4 PLACES</td> <td>± .005</td> <td>± .0005</td> </tr> <tr> <td>3 PLACES</td> <td>± .005</td> <td>± .0005</td> </tr> <tr> <td>2 PLACES</td> <td>± .005</td> <td>± .0005</td> </tr> <tr> <td>1 PLACE</td> <td>± .005</td> <td>± .0005</td> </tr> </table>		mm	INCH	4 PLACES	± .005	± .0005	3 PLACES	± .005	± .0005	2 PLACES	± .005	± .0005	1 PLACE	± .005	± .0005	DRAWN BY SSS	DATE 2007/06/01	TITLE <b>TRIAx JACK, BULKHEAD 3 LUGS, HIGH VOLTAGE EWR2490 TRIAX-PC</b>
			mm	INCH																
		4 PLACES	± .005	± .0005																
3 PLACES	± .005	± .0005																		
2 PLACES	± .005	± .0005																		
1 PLACE	± .005	± .0005																		
ANGULAR ± 2 °	CHECKED BY TEF	DATE 2007/06/01	APPROVED BY JWIENER	DATE 2012/09/06	<b>MOLEX INCORPORATED</b>															
DRAFT WHERE APPLICABLE MUST REMAIN WITHIN DIMENSIONS	MATERIAL NO. <b>731750140</b>	DOCUMENT NO. <b>SD-73415-207</b>	SHEET NO. <b>2 OF 4</b>																	



4. TRIM OUTER BRAID TO DIMENSION SHOWN



5. FLARE BACK OUTER BRAID OVER CLAMP. SLIDE WASHER CABLE AND COMPACT SLIGHTLY. TRIM BRAID



6. PLACE GASKET OVER CABLE. TRIM DIELECTRIC AS SHOWN

CHG: SEE SHEET 1  
 EC NO: URF2007-0489  
 DRWN:SSHAH 2007/06/01  
 CHKD:ROBERTSON 2012/09/06  
 APPR:JWIENER 2012/09/06

REV	DESCRIPTION
A	

QUALITY SYMBOLS	
	=0
	=0

GENERAL TOLERANCES (UNLESS SPECIFIED)	
4 PLACES	± .005
3 PLACES	± .004
2 PLACES	± .003
1 PLACE	± .002
ANGULAR ± 2 °	

DIMENSION STYLE		SCALE	DESIGN UNITS	THIRD ANGLE PROJECTION
MM/IN			METRIC	
DRAWN BY	DATE	TITLE		
SSS	2007/06/01	TRIAx JACK, BULKHEAD		
CHECKED BY	DATE	3 LUGS, HIGH VOLTAGE		
TEF	2007/06/01	EWR2490 TRIAX-PC		
APPROVED BY	DATE	MOLEX INCORPORATED		
JWIENER	2012/09/06	MOLEX INCORPORATED		
MATERIAL NO.	DOCUMENT NO.	SHEET NO.		
SEE SHEET 1	SD-73415-207	3 OF 4		
THIS DRAWING CONTAINS INFORMATION THAT IS PROPRIETARY TO MOLEX INCORPORATED AND SHOULD NOT BE USED WITHOUT WRITTEN PERMISSION				