

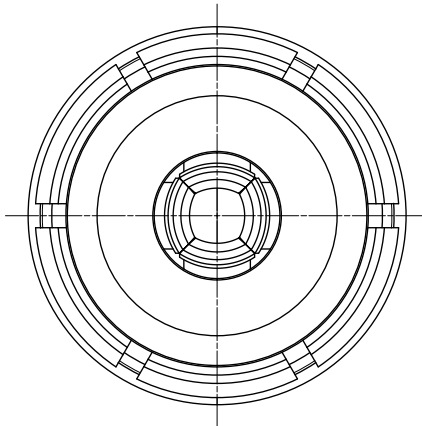
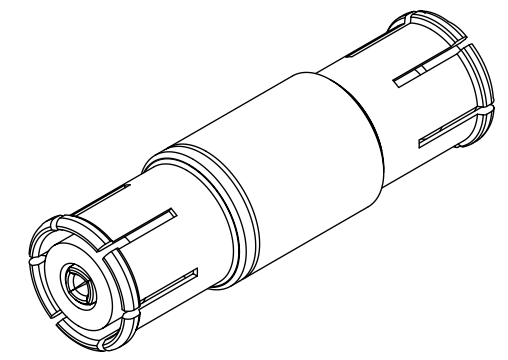
MATERIALS AND FINISHES:

**BODY: BERYLLIUM COPPER
PLATED SEE TABLE
OPTION 1:
PLATED GOLD (8 MICRO-IN MIN)
OVER HIGH PHOS NICKEL (80 MICRO-IN MIN)
OVER COPPER (20 MICRO-IN MIN)**

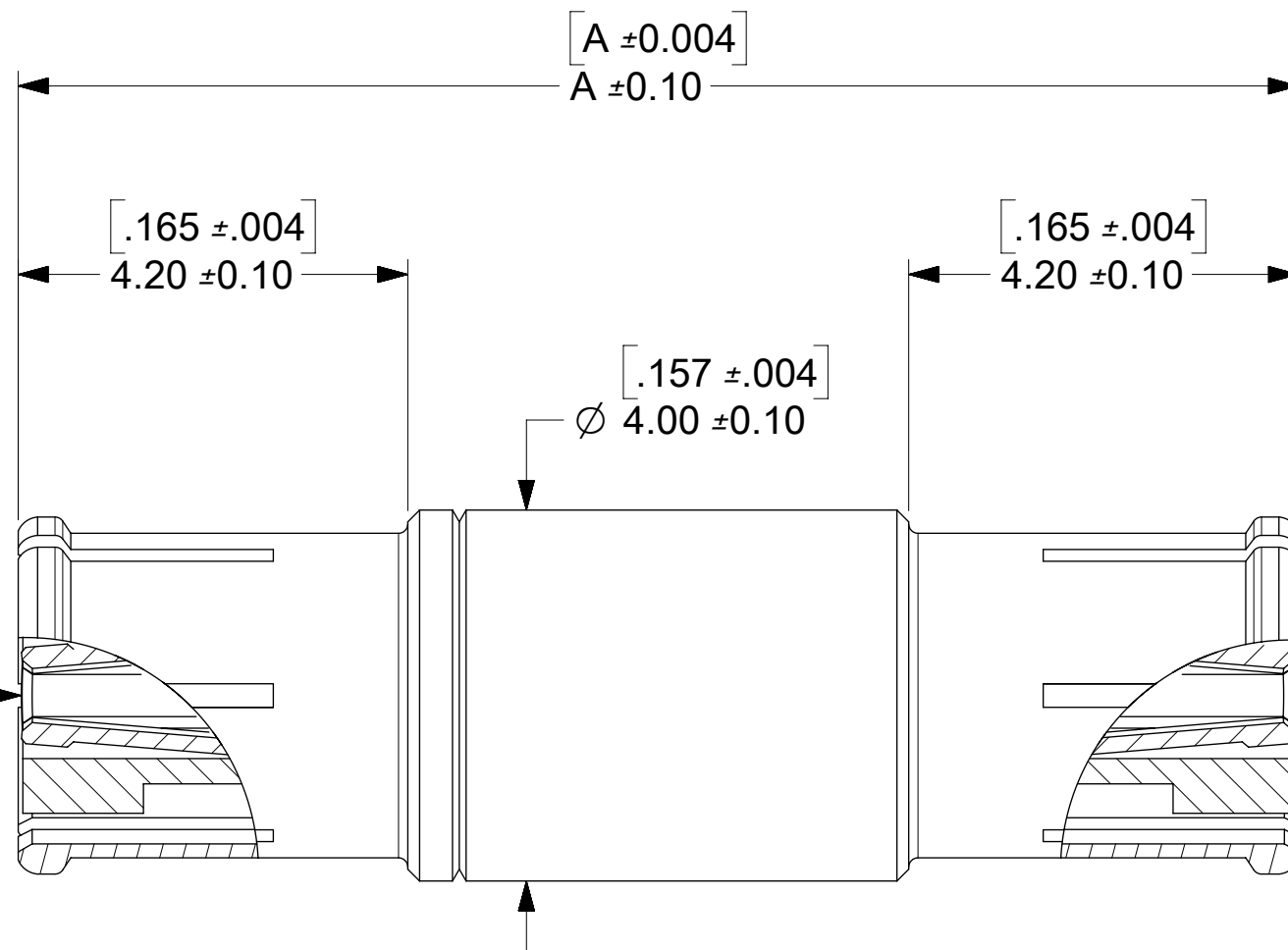
**OPTION 2:
PLATED GOLD (1 MICRO-IN MIN)
OVER HIGH PHOS NICKEL (80 MICRO-IN MIN)
OVER COPPER (20 MICRO-IN MIN)**

**CONTACT: BERYLLIUM COPPER
PLATED GOLD (8 MICRO-IN MIN)
OVER HIGH PHOS NICKEL (80 MICRO-IN MIN)
OVER COPPER (20 MICRO-IN MIN)**

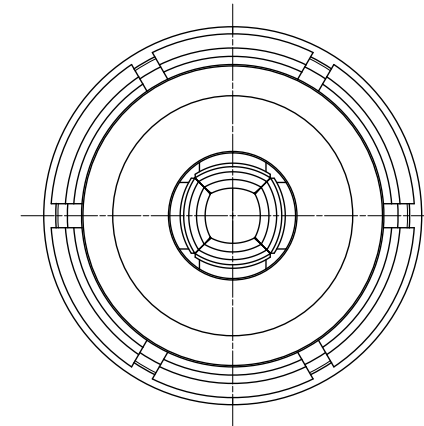
INSULATORS: PTFE



SMP-MAX JACK
FEMALE CONTACT



SMP-MAX JACK
FEMALE CONTACT



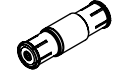
73420-0474	.555/14.09	OPTION 2
73420-0473	1.142/29.00	OPTION 1
73420-0472	.587/14.90	OPTION 1
73420-0471	.479/12.15	OPTION 1
73420-0470	.543/13.80	OPTION 1
PART NO.	DIM A (IN/MM)	BODY

C	2017/3/31	UPDATE VIEWS PER 10752-A
B	2017/3/6	UPDATE VIEWS PER RF17-E026
A6	2016/10/11	ADD ENGAGE/DISENGAGE NOTE & UPDATE FINISH NOTE
A5	2016/1/20	UPDATE PACKING SHEET FOR -0473
A4	2015/8/17	UPDATE VIEWS PER RF15-E287
A3	2015/3/3	ADD PACKING SHEET PER RF15-E146
A2	2015/1/23	ADD -0474 PER PDR14121829
A1	2011/10/11	ADD -0473
A	2011/9/30	NEW RELEASE
REV	DATE	DESCRIPTION

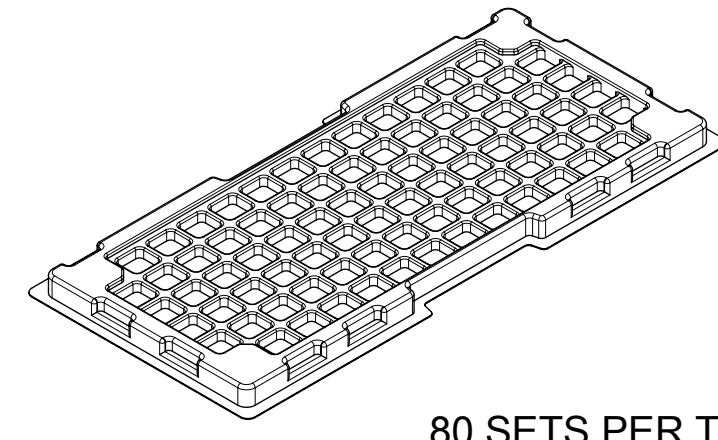
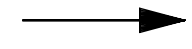
FORCE TO ENGAGE & DISENGAGE 6 SLOT	MIL-PRF-39012 E PARAGRAPH 4.6.2 AXIAL FORCE	"SMOOTH BORE/SLIDE-ON": ENGAGE (MAX): 14N (3.15 LBS) DISENGAGE (MAX): 8N (1.80 LBS) DISENGAGE (MIN): 0.7N (0.16 LBS)
		"DETENT/SNAP-ON": ENGAGE (MAX): 45N (10.11 LBS) DISENGAGE (MAX): 40N (8.99 LBS) DISENGAGE (TYP): 2.5N (0.56 LBS)

PS-89675-3760	ELEC/MECH PERFORMANCE
SPECIFICATION	DESCRIPTION

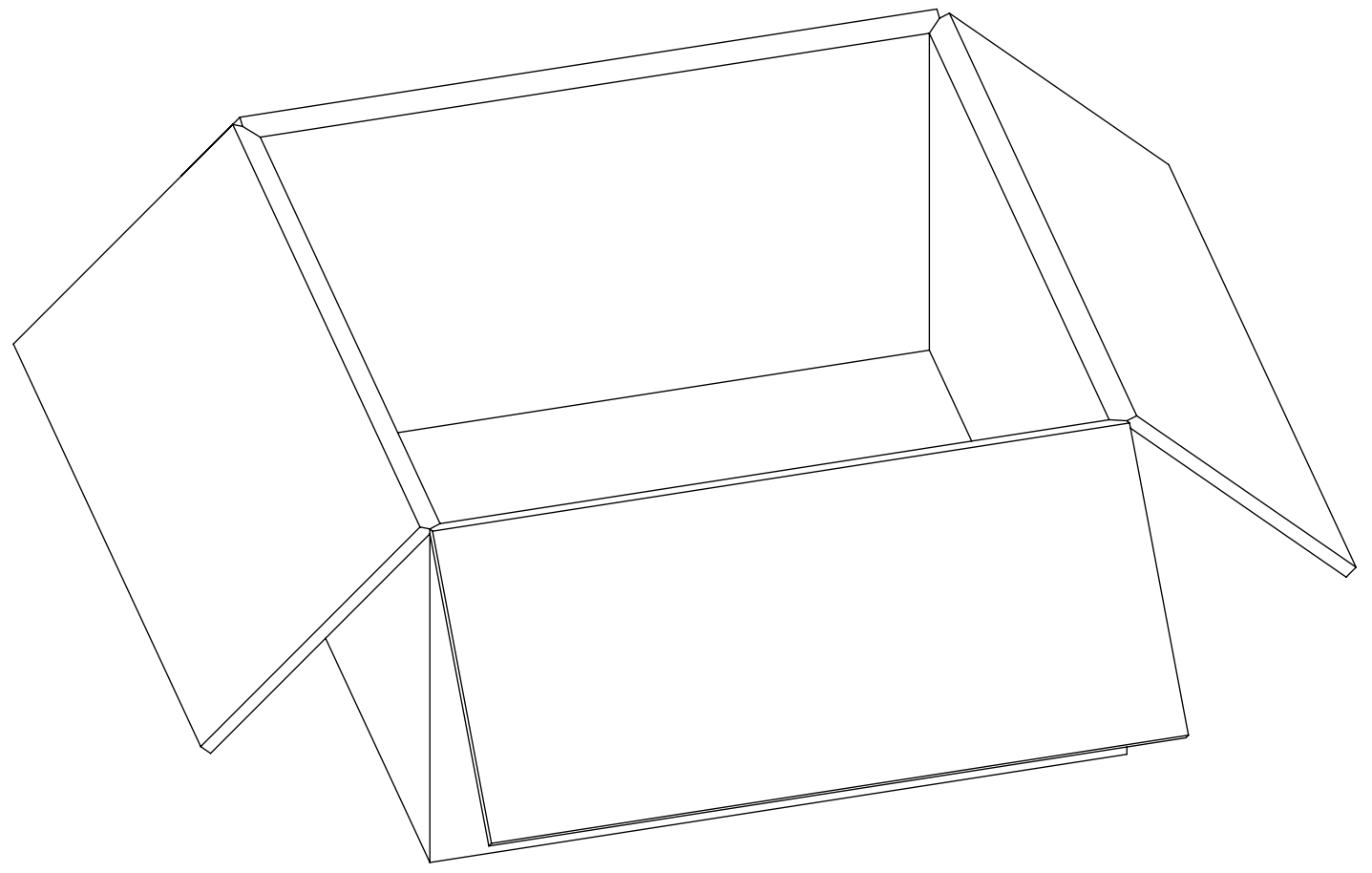
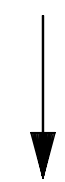
QUALITY SYMBOLS	THIS DRAWING CONTAINS INFORMATION THAT IS PROPRIETARY TO MOLEX ELECTRONIC TECHNOLOGIES, LLC AND SHOULD NOT BE USED WITHOUT WRITTEN PERMISSION		DIMENSION UNITS		SCALE
▽ = 0	2017/03/31 2017/04/05	GENERAL TOLERANCES (UNLESS SPECIFIED)	MM	NTS	
▽ = 0			DRWN BY	DATE	
▽ = 0	EC NO: 115230 DRWN: RYEH CHKD: YCHENG	ANGULAR TOL ± °	BBHARADWAJD	2016/10/11	SMP-MAX FEMALE TO SMP-MAX FEMALE BULLET EWR-4687 SMPMAX-BULLET
▽ = 0		4 PLACES ±	CHKD BY	DATE	
▽ = 0	REV APPR: YCHENG	3 PLACES ±	CHKD BY		PRODUCT CUSTOMER DRAWING
▽ = 0		2 PLACES ±	APPR BY		
▽ = 0	C	1 PLACE ±	AROBERTSON	2016/10/11	SERIES
▽ = 0		0 PLACES ±	DRAFT WHERE APPLICABLE MUST REMAIN WITHIN DIMENSIONS		THIRD ANGLE PROJECTION
□ = 0	DRAWING SIZE		C	73420	
■ = 0	MATERIAL NUMBER		SEE TABLE		CUSTOMER
▽ = 0	DOCUMENT NUMBER		SD-73420-047		DOC TYPE
	DOC PART		000		SHEET NUMBER
	PSD		000		1 OF 3



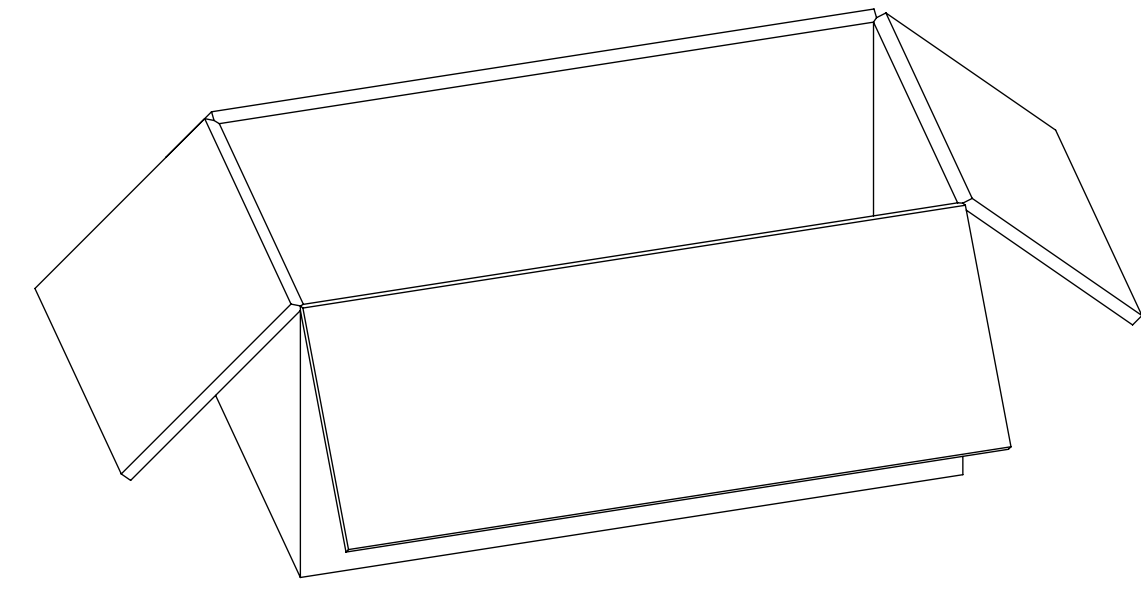
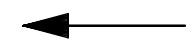
P/N: 73420-0470 OR
 P/N: 73420-0471 OR
 P/N: 73420-0472 OR
 P/N: 73420-0474



80 SETS PER TRAY
 P/N: 89707-0190



3200 SETS PER OUTER
 CARTON BOX P/N: 96708-0005



1600 SETS PER INNER
 CARTON BOX P/N: 96707-0001

QUALITY SYMBOLS ▽ = 0 ▽ = 0 ▽ = 0 ▼ = 0 ▽ = 0 ☒ = 0 ■ = 0 ▽ = 0	THIS DRAWING CONTAINS INFORMATION THAT IS PROPRIETARY TO MOLEX ELECTRONIC TECHNOLOGIES, LLC AND SHOULD NOT BE USED WITHOUT WRITTEN PERMISSION									
	EC NO: 115230 DRWN: RYEH CHKD: APPR: YCHENG	2017/03/31 2017/04/05	GENERAL TOLERANCES (UNLESS SPECIFIED)		DIMENSION UNITS	SCALE				
			ANGULAR TOL ± °		MM	NTS				
			4 PLACES ±		DRWN BY	DATE	SMP-MAX FEMALE TO SMP-MAX FEMALE BULLET EWR-4687 SMPMAX-BULLET			
			3 PLACES ±		BBHARADWAJD	2016/10/11				
			2 PLACES ±		CHKD BY	DATE				
	1 PLACE ±		CHKD BY	DATE	PRODUCT CUSTOMER DRAWING					
	0 PLACES ±		AROBERTSON	2016/10/11						
	DRAFT WHERE APPLICABLE MUST REMAIN WITHIN DIMENSIONS		DRAWING SIZE	THIRD ANGLE PROJECTION	SERIES	MATERIAL NUMBER	CUSTOMER			
	C	C	C	⊗	73420	SEE TABLE	GENERAL MARKET			
		DOCUMENT NUMBER	DOC TYPE	DOC PART	SHEET NUMBER					
		SD-73420-047	PSD	000	2 OF 3					