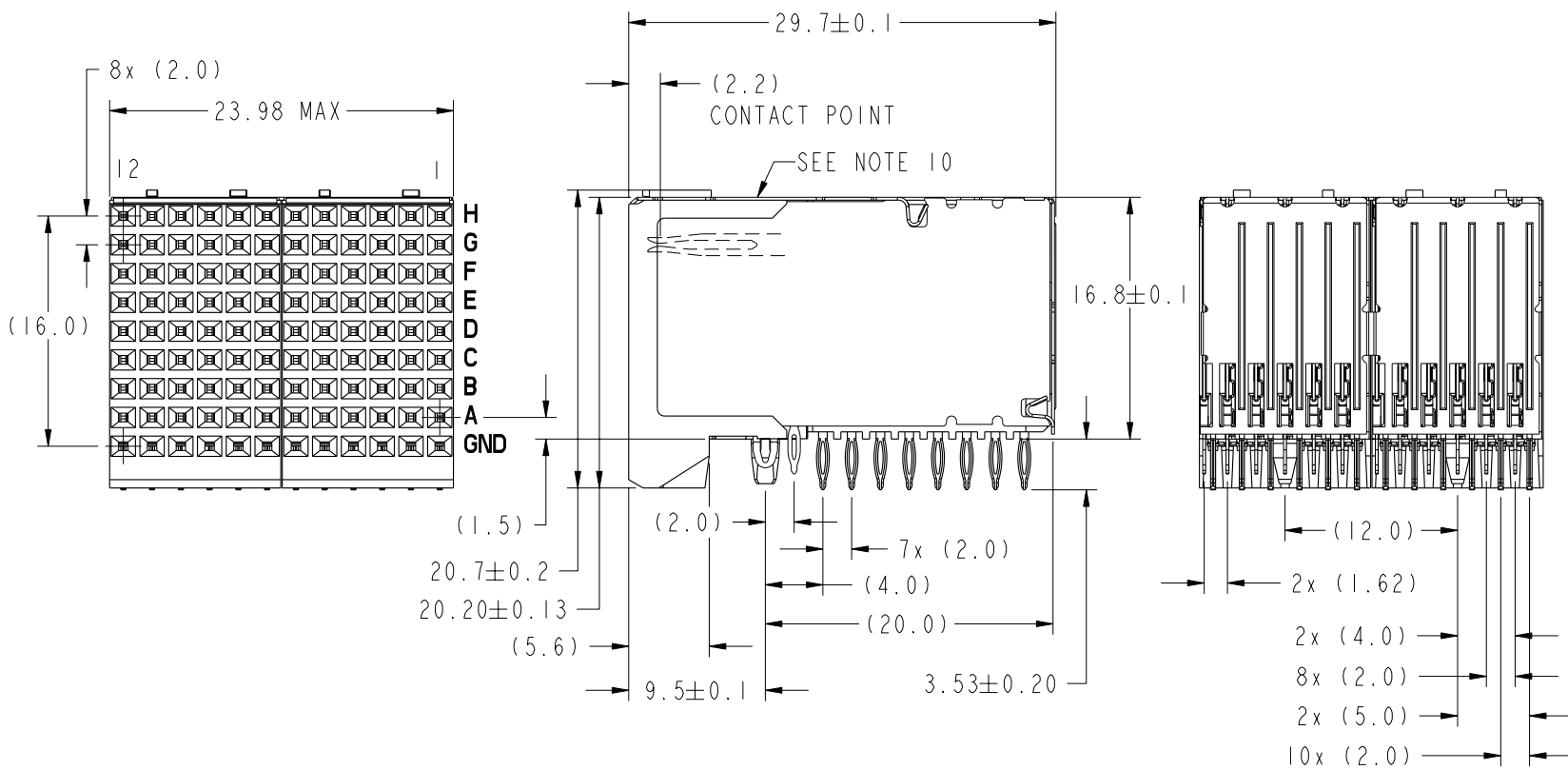


PRODUCT NUMBER
74981-X02
74981-X02LF

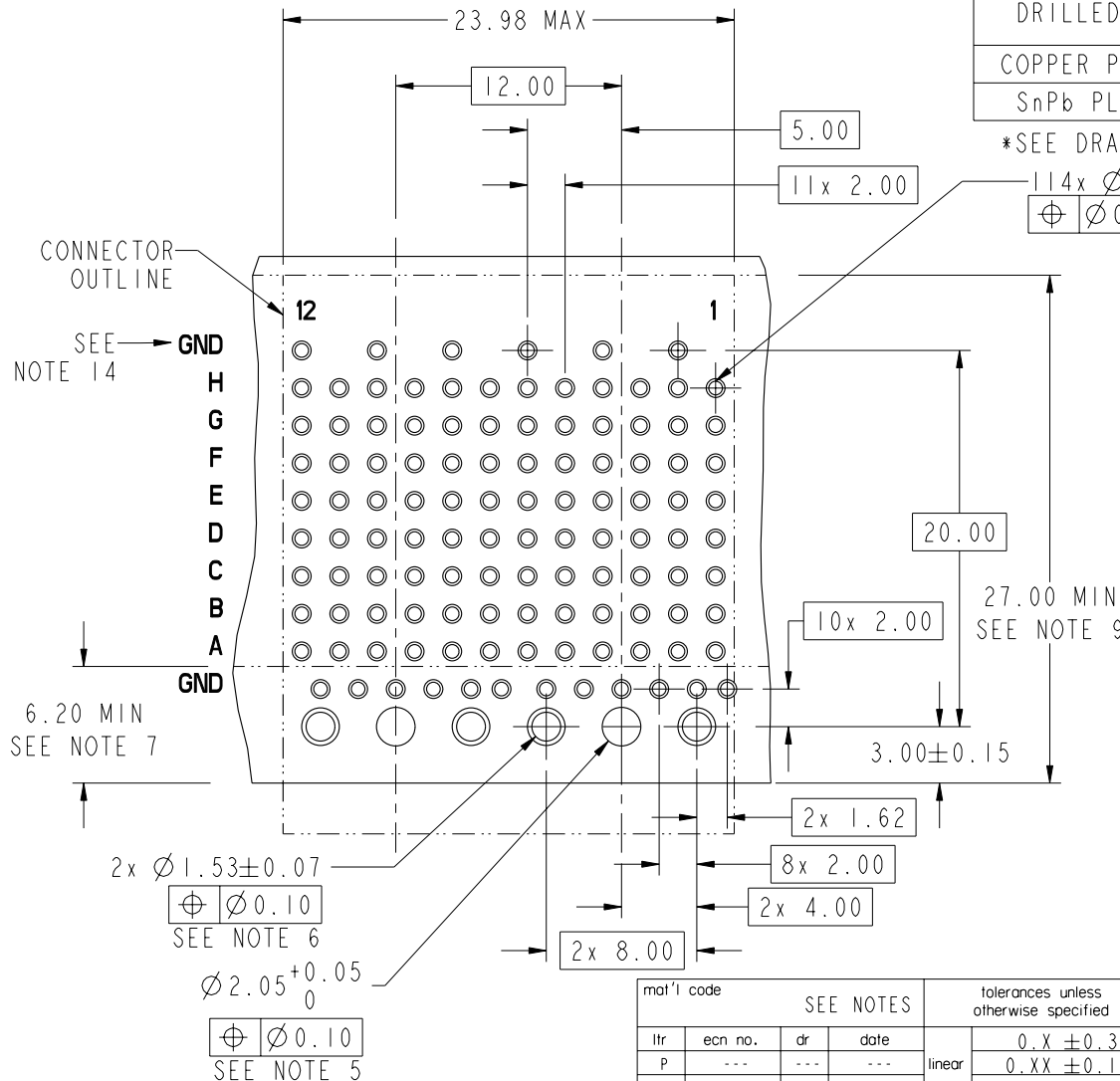


This document is the property of and embodies
 CONFIDENTIAL and PROPRIETARY information of FCI.
 No part of the information shown on this
 document may be used in any way or disclosed
 to others without the written consent of FCI.
 Copyright FCI.

mat'l code				SEE NOTES		tolerances unless otherwise specified		CUSTOMER		www.fciconnect.com	
ltr	ecm no.	dr	date	linear	0.X ±0.3		COPY		projection	title	
P	V06-0544	DCH	2006-06-09		0.XX ±0.10		MM			8 ROW RECEPTACLE SIGNAL ASSEMBLY	
J	V12610	SAK	11-07-01	angles	0.XXX ±0.050		MM		product family		
K	V20902	TAB	05-09-02		0° ±2°		2:1		METRAL 1000		
L	V21119	TAB	06-25-02	dr	S. KLINE	03-09-00	scale		code		
M	V04-0582	TAB	06-11-04	engr	M. HAHN	03-09-00	A		213		
N	V05-0192	DAI	04/15/05	chr	S. STONER	08-24-00	A		sheet		
sheet index				appd	M. HAHN	08-24-00	A		1 of 4		
revision				P	P	P	A		cage code		
sheet				1	2	3	A		22526		

PRODUCT NUMBER
74981-X02
74981-X02LF

PRESS-FIT HOLES		
HOLE DIAMETER AFTER PLATING	$\varnothing 0.65 - \varnothing 0.80$ *	$\varnothing 1.53$
DRILLED HOLE	$\varnothing 0.81 - \varnothing 0.86$ ($\varnothing 0.85$ DRILL)	$\varnothing 1.61 - \varnothing 1.66$ ($\varnothing 1.65$ DRILL)
COPPER PLATING	0.025-0.050	0.025-0.050
SnPb PLATING	0.005-0.015	0.005-0.015



CONNECTOR OUTLINE
SEE NOTE 14
GND
H
G
F
E
D
C
B
A
GND
6.20 MIN
SEE NOTE 7

*SEE DRAWING 58351 FOR OTHER OPTIONS

114x $\varnothing 0.65 - \varnothing 0.80$
 $\varnothing 0.10$

2x $\varnothing 1.53 \pm 0.07$
 $\varnothing 0.10$
SEE NOTE 6

$\varnothing 2.05^{+0.05}_0$
 $\varnothing 0.10$
SEE NOTE 5

RECOMMENDED PCB HOLE PATTERN-COMPONENT SIDE

mat'l code				SEE NOTES		tolerances unless otherwise specified		CUSTOMER		FCj www.fciconnect.com	
ltr	ecr no.	dr	date	linear					COPY	projection	title
P	---	---	---								8 ROW RECEPTACLE SIGNAL ASSEMBLY
				angles							product family
				dr	S. KLINE	03-09-00					METRAL 1000
				engr	M. HAHN	03-09-00					code
				chr	S. STONER	08-24-00					213
				appd	M. HAHN	08-24-00					sheet
											2
sheet index	revision sheet										

SEE NOTE 12



This document is the property of and embodies CONFIDENTIAL and PROPRIETARY information of FCj. No part of the information shown on this document may be used in any way or disclosed to others without the written consent of FCj. Copyright FCj.

PRODUCT NUMBER
SEE TABLE

NOTES

1. UNLESS OTHERWISE SPECIFIED, ALL DIMENSIONS AND TOLERANCES ARE IN ACCORDANCE WITH ASME Y14.5M, 1994
2. HOUSING MATERIAL: LIQUID CRYSTAL POLYMER, GLASS FILLED
FLAME RETARDANT ACC. UL94V-0
3. GROUND SHIELD MATERIAL: COPPER ALLOY
SIGNAL CONTACT MATERIAL: COPPER ALLOY
4. PLATING ON PRESS-FIT TAIL AREA:
74981-X02 = SnPb
74981-X02LF = Sn (LEAD FREE)
5. Ø2.05 HOLE IS UNPLATED
6. Ø1.53 PLATED HOLES (2X) ARE FOR GROUNDS
7. AVOID TRACES IN THIS AREA ON TOP OF PCB DUE TO EXPOSED GROUND SHIELD
8. UNDERPLATING FOR SHIELD AND SIGNAL CONTACTS IS 1.3 µm Ni MIN
9. COMPONENT KEEP OUT ZONE FOR PRESS BLOCK CLEARANCE
10. PRODUCT MARKING: DATE AND LOT CODE
11. SEE GS-20-018 FOR APPLICATION OF CONNECTOR TO PCB
12. PCB THICKNESS RANGE: 1.3mm TO 3.4mm
13. SEE PRODUCT SPECIFICATION GS-12-134 FOR PRODUCT PERFORMANCE CHARACTERISTICS.


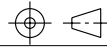

14. THIS GND ROW OF VIA-HOLES ONLY REQUIRED FOR PREVIOUS REVISIONS OF THIS DESIGN WHERE THE TOP SHIELDS HAD EON PRESS-FIT. DUE TO INVENTORIES OF PREVIOUS VERSION, WE RECOMMEND THEY BE DESIGNED IN.

15. THE PRODUCTS WHERE THE PART NUMBER ENDS IN LF MEET EUROPEAN UNION DIRECTIVES AND OTHER COUNTRY REGULATIONS AS DESCRIBED IN GS-22-008.

ALL PRODUCTS WILL WITHSTAND EXPOSURE TO 260°C FOR 60 SECONDS IN A CONVECTION, INFRA-RED OR VAPOR PHASE REFLOW OVEN.

PRODUCT NO.	CONTACT PLATING	SHIELD PLATING
74981-102	0.8 µm Au	0.8 µm Au
74981-302	1.3 µm Au	1.3 µm Au
74981-902	0.8 µm GXT	0.8 µm Au
74981-902S	0.8 µm GXT	1.3 µm GXT
*74981-102LF	0.8 µm Au	0.8 µm Au
*74981-302LF	1.3 µm Au	1.3 µm Au
*74981-902LF	0.8 µm GXT	0.8 µm Au
*74981-902SLF	0.8 µm GXT	1.3 µm GXT

*SEE NOTE 15 FOR LEAD FREE OPTION

mat'l code		SEE NOTES		tolerances unless otherwise specified		CUSTOMER		 www.fciconnect.com	
ltr	ecr no.	dr	date	linear	0.X ±0.3		COPY		title
P	---	---	---		0.XX ±0.10		projection		
				angles	0.XXX ±0.050				product family
					0° ±2°				
				dr	S. KLINE	03-09-00	scale		code
				enr	M. HAHN	03-09-00	2:1		213
				chr	S. STONER	08-24-00	A		sheet
				appd	M. HAHN	08-24-00			3
sheet index	revision sheet								

This document is the property of and embodies CONFIDENTIAL and PROPRIETARY information of FCI. No part of the information shown on this document may be used in any way or disclosed to others without the written consent of FCI. Copyright FCI.