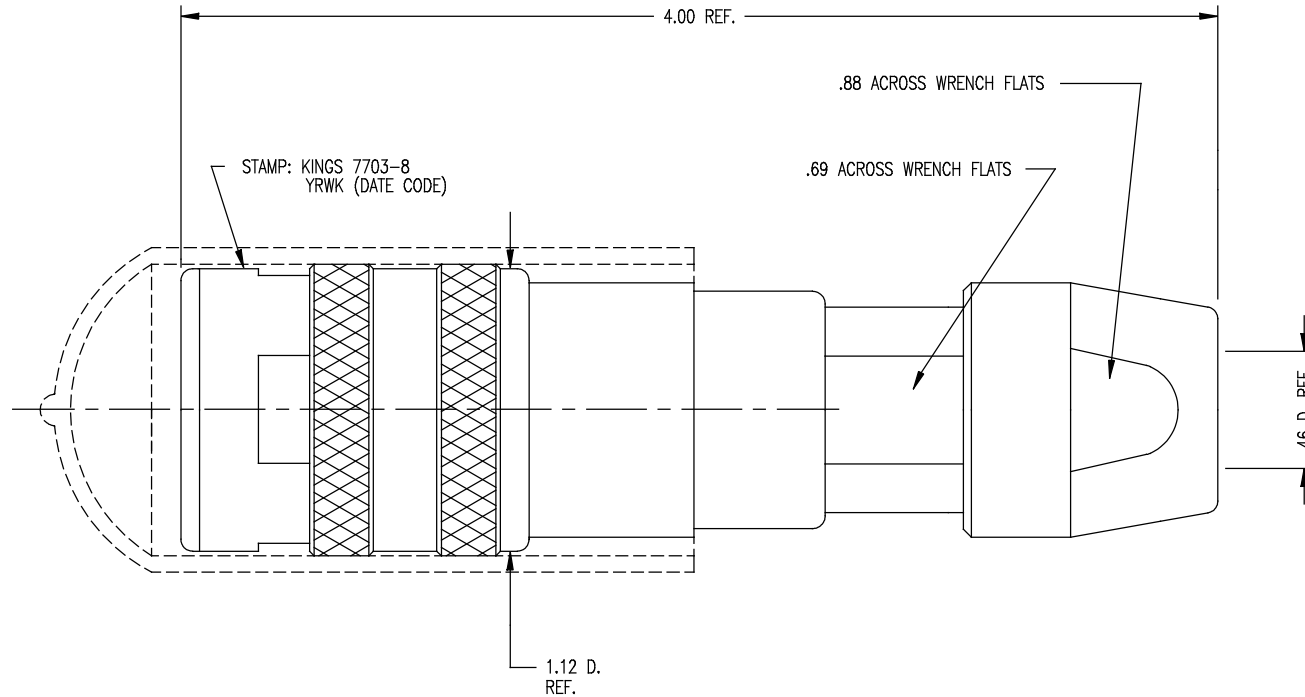


| | | |
|----------|--------|-----------|
| DASH NO. | M CODE | MADE FROM |
|----------|--------|-----------|

GSD

| REVISIONS | |
|-----------|----------------------------|
| ISSUE | CHANGES |
| 0 | ER 36987 KH 05/30/96 |
| 1 | CN 37012 E KH 06/18/96 |
| 2 | CN 37238 D KH 02/03/97 |
| 3 | CN 38154 C BDH 12/14/00 |

7703-8



NOTES:

- FOR USE WITH BELDEN 1859A (79 CABLE GROUP).
- FOR CABLING INSTRUCTIONS SEE KAI-8011.
- FOR CRIMPING USE DIE SIZE 2040.
- MATERIALS:
 INSULATORS-TEFLON, ASTM-D-4894
 GASKETS-SILICONE RUBBER, ZZ-R-765
 CAP-VINYL
 K-GRIP SLEEVE-COMMERCIAL BRONZE, ASTM-B-135
 CENTER CONTACT }
 OUTER CONTACT SPRING } BER. COP., ASTM-B-196
 INSERT
 ALL OTHER METAL PARTS-BRASS, ASTM-B16

5. FINISHES:

- CENTER CONTACT } GOLD PLATE PER MIL-G-45204
- OUTER CONTACT SPRING } GOLD PLATE PER MIL-G-45204
- NUTS } KINGS TARNISH RESISTANT NICKEL FINISH (TR-5)
- COLLET } KINGS TARNISH RESISTANT NICKEL FINISH (TR-5)
- BODIES } KINGS TARNISH RESISTANT NICKEL FINISH (TR-5)
- ALL OTHER METAL PARTS-SILVER PLATE PER QQ-S-365

6. ELECTRICAL CHARACTERISTICS:

- NOMINAL IMPEDANCE: 75 OHMS
- FREQUENCY RANGE: DC-500 MHZ
- VOLTAGE BREAKDOWN: CENTER CONDUCTOR/INNER GROUND: 1500 VRMS
- INNER GROUND/OUTER GROUND: 500 VRMS

KAM6627

SCALE 2:1

APPROX SURFACE AREA

WAS: E-19362

USED ON

REF:

JK, TRI-LOC,
SERIAL DIGITAL

DRAWN KH DATE 05/30/96

DESIGN DW DATE 05/31/96

APPR. DATE

KINGS
ELECTRONICS CO., INC.
ROCK HILL, SOUTH CAROLINA 29730

GSD

7703-8