

8 7 6 5 4 3 2 1

This document, including the design, configuration and mechanical features revealed herein are the sole, confidential and proprietary property of Winchester Interconnect. Reproduction or use thereof, in whole or part, is prohibited without the prior written consent of Winchester Interconnect.

REV.	DESCRIPTION	DATE	APPROVED
A	ECO-12289	4/01/2020	ASNZ

**MATERIALS:**

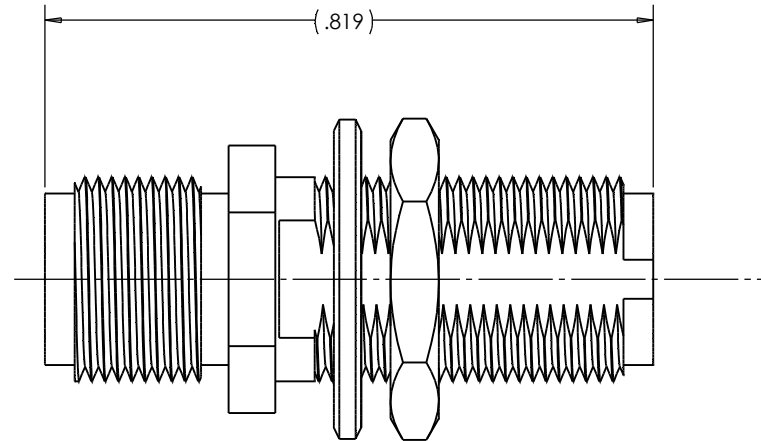
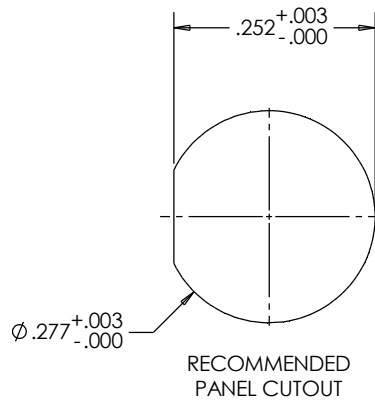
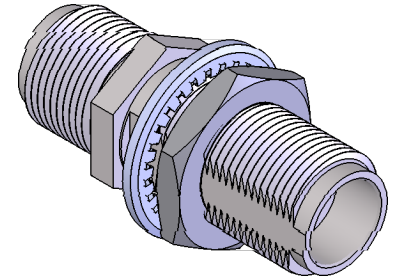
STAINLESS STEEL 303 PER ASTM A582  
 BERYLLIUM COPPER PER ASTM B196  
 OXIDE NORYL (tm), MIL-P-46129


**FINISH:**

CENTER CONDUCTORS AND SOLDER COMPONENTS SHALL BE GOLD PLATED PER MIL-DTL-45204D TYPE II, CLASS 1 OVER NICKEL PLATE PER AMS- QQ-N-290  
 BODY AND BODY COMPONENTS SHALL BE PASSIVATED PER ASTM A380.

**ELECTRICALS:**

NOMINAL IMPEDANCE: 50 OHMS.  
 FREQUENCY: DC-65 GHz.  
 VSWR: 1.33: 1 MAX TO DC 65 GHz.  
 INSERTION LOSS: .05√F(GHz) dB MAX.



DO NOT SCALE DRAWING	DRAWN ---	DATE 01/05	 245 Lynnfield St. Peabody, MA 01960
UNLESS OTHERWISE SPECIFIED: DIMENSIONS ARE IN INCHES	ENG APPR.	DATE	
TOLERANCES: FRACTIONS: $\pm 1/64$ .XX: $\pm .01$ .XXX: $\pm .005$ ANGLES: $\pm 1/2^\circ$ MACHINED SURFACES: 63/	MFG APPR.	DATE	
	OTHER APPR. dcamello	DATE	
TITLE: 1.85 mm JACK TO 1.85 mm JACK			REV A
PER ASME Y14.5M-1994		DWG. NO. 85-985-2000-80 SCALE: 4:1	SHEET 1 OF 1

8 7 6 5 4 3 2 1