

This document is the property of Amphenol Corporation and is delivered on the express condition that it is not to be disclosed, reproduced or used, in whole or in part, for manufacture or sale by anyone other than Amphenol Corporation without the prior consent, & that no right is granted to disclose or to use any information in this document.

REVISIONS				
SYM	ECN	DESCRIPTION	DATE	APPROVED
1	HK5895	First Release	09/16/09'	IP
2	HK5980	Add pack information	01/05/10'	IP
3	HK6269	Add latch retention force spec	07/28/10'	IP
4	HK6335	Modify the P/N system ddescribe	09/27/10'	IP

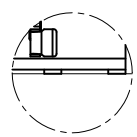
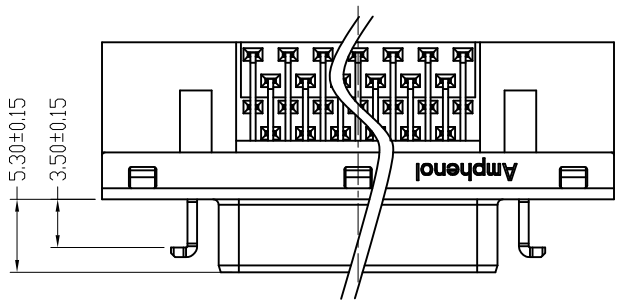


fig 1  
W/O Board lock

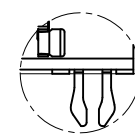
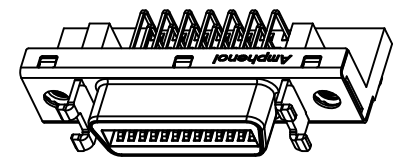


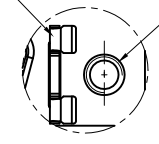
fig 2  
Board lock

Board mount feature

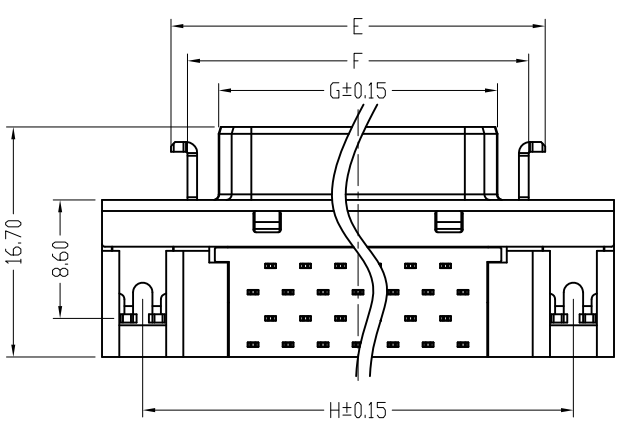
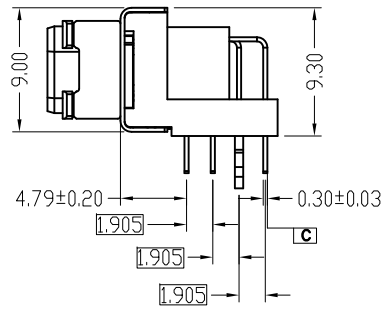
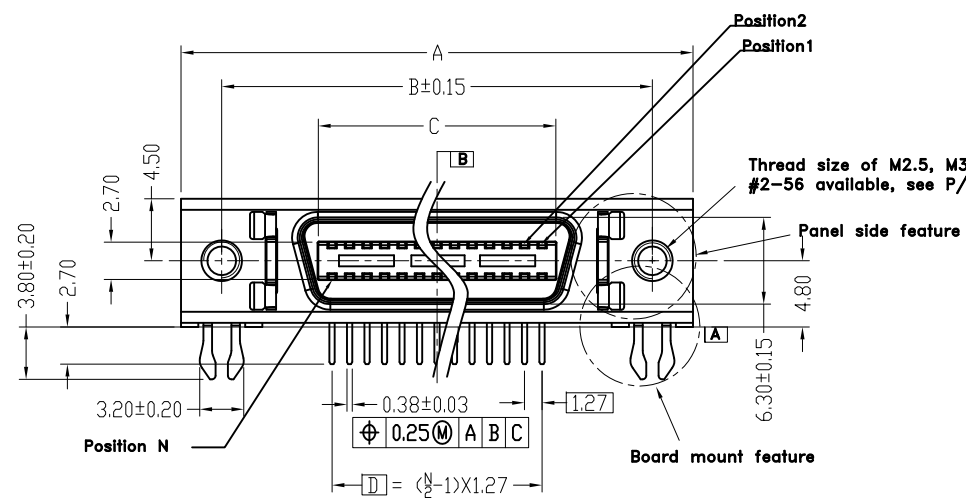


Latch option  
(see P/N system)

Thread option  
(see P/N system)



Panel side feature



Part Number	N	A	B	C	D	E	F	G	H	Layout Style
858-F014-B212-009X	14	29.54	23.64	9.62	7.62	19.54	17.14	12.62	23.64	1
858-F026-B212-009X	26	37.16	31.26	17.24	15.24	27.16	24.76	20.24	31.26	1
858-F036-B212-009X	36	43.51	37.61	23.59	21.59	33.51	31.11	26.59	37.61	2
858-F050-B212-009X	50	52.40	46.50	32.48	30.48	42.40	40.00	35.48	46.50	1
858-F068-B212-009X	68	63.83	57.93	43.91	41.91	53.83	51.43	46.91	57.93	2
858-F080-B212-009X	80	71.45	65.55	51.53	49.53	61.45	59.05	54.53	65.55	2

UNLESS OTHERWISE SPECIFIED TOLERANCES		APPROVAL		DATE
	U.S.	METRIC	DRAWN	Bin Di
.X	+/-	0.50	Tony Tang	09/27/10
.XX	+/-	0.25	CHECKED	
.XXX	+/-	0.10	CHECKED	
FRACTIONS	+/-			
ANGLES	+/-	5°		
FOR MATERIALS AND FINISHES SEE NOTES		DRAWING FILE : \\DRAWING\858\C 858F2008212009X-4.DWG		
REMOVE SHARP EDGES		ANGLE OF PROJECTION		
DIMENSIONS				
[U.S.]	[INCHES]			
METRIC	MM			

**Amphenol**

TITLE  
858 SERIES PCB R/A FEMALE SHIELDED RECEPTACLE

SIZE A3  
DRAWING NO. C 858FXXXB212009X  
SCALE NONE

REV. 4  
SHEET 1 OF 4



*CUSTOMER DRAWING*

This document is the property of Amphenol Corporation and is delivered on the express condition that it is not to be disclosed, reproduced or used, in whole or in part, for manufacture or sale by anyone other than Amphenol Corporation without its prior consent. It shall be granted to disclose or to use any information in this document.

REVISIONS				
SYM	ECN	DESCRIPTION	DATE	APPROVED
		SEE SHEET 1		

**Note:**

- All dimensions are in mm.
- Materials
  - Contact: Phosphor Bronze,  
Refer to the P/N system for the Gold plating on mating area  
2.54-5.08µm pure matte Tin plated on termination area  
1.27-2.54µm Nickel underplated
  - Shell: Cold Roll Steel 2.54-5.08um Nickel plated over 1.27um min copper.
  - Housing: High temperature plastic, color black, UL94V-0 rated.
  - Cover: High temperature plastic, color black, UL94V-0 rated.
  - latch: Stainless steel.
  - Nut: Brass, 1.27-3.81um Nickel plated.
  - Board lock: Brass, 1.27-3.81um Tin plated over 1.27um min Nickel.

**3. Mechanical Characteristics**

- Durability: 500 cycles min. for 0.76µm gold  
250 cycles min. for 0.38µm  
50 cycles min. for gold flash
- Contact Retention Force with insulator: 4.4 N min. per contact
- Mating force: 1.50 N Max/contact
- Unmating force: 0.20 N Min/contact
- The housing flatness: should be within 0.003 mm/mm
- Latch retention force: 300N min per connector

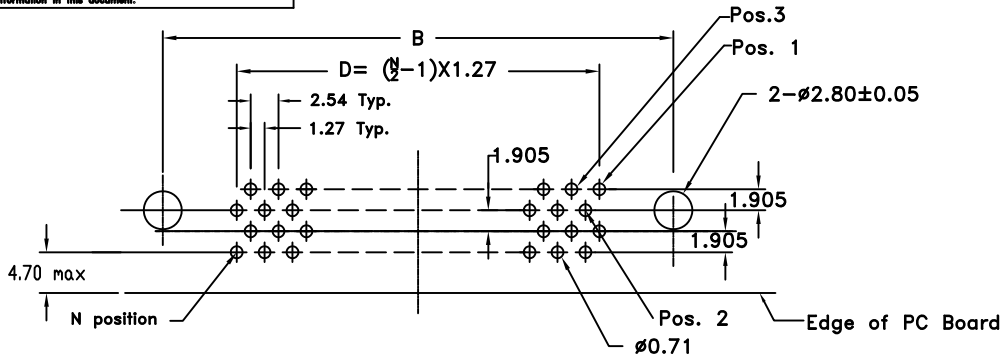
**4. Electrical Characteristics**

- Contact Rating: 1 A.
- Contact Resistance: 35 mΩ Max.
- Insulation Resistance: >500MΩ Min.at 500 VDC
- Operation Temperature: -55°C to 105°C
- Dielectric Strength: 500 VAC

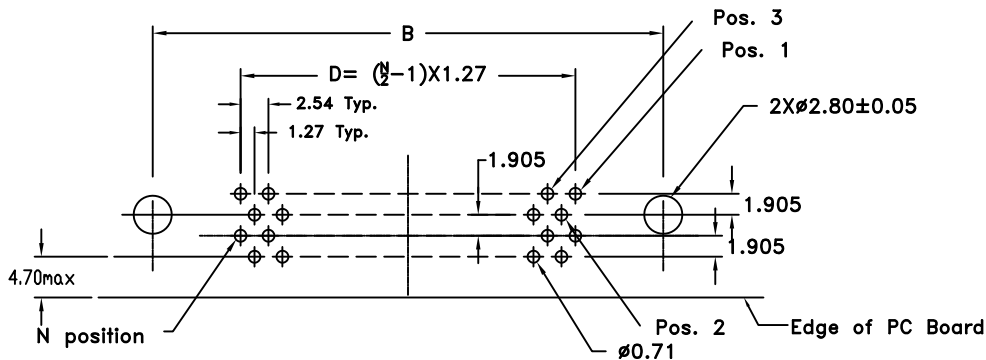
5. Suitable for PCB with a nominal thickness of 1.56 mm

6. Material should be fulfilled Amphenol Spec.# SSN002.

7. Packing: option for tray pack is available,  
see separated drawing C858FXXXB212010X for detail.



*Recommended PCB Layout 2*



*Recommended PCB Layout 1*

**P/N : SYSTEM**

**858-FXXX-XX-X-X-009-X**

- NO.of ways: 014: 14ways, 026: 26ways, 036: 36ways, 050: 50ways, 068: 68ways, 080: 80ways
- PCB mount: B2: R/A Through hole type, B4: Press fit type
- Board mount: 0:W/O board lock (see fig 1), 1:Board lock (see fig 2)
- plating: 1- 30u", 2- 15 u", 3-Gold flash
- Sequent Number: 001: Diecast R/A type, 002: Press fit type, 009: steel latch R/A type packing with T&R, 010: \* steel latch R/A type packing with tray see note 7th.
- Panel side Feature: 0: W/O latch + M2.5 thread, 1: Latch + thread M2.5 for 002 press fit type, 2: Latch + thread M2.5 for 009 steel latch R/A type Latch + thread #4-40 for 001 diecast R/A type, 3: Latch + thread M3 for 009 steel latch R/A type, 4: Latch + thread #2-56 for 009 steel latch R/A type

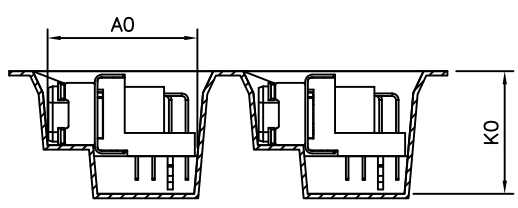
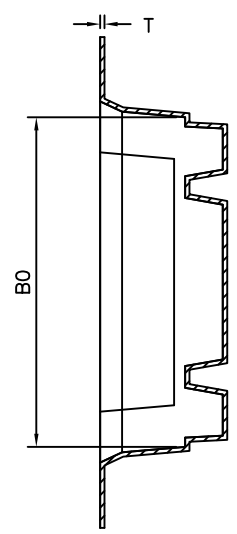
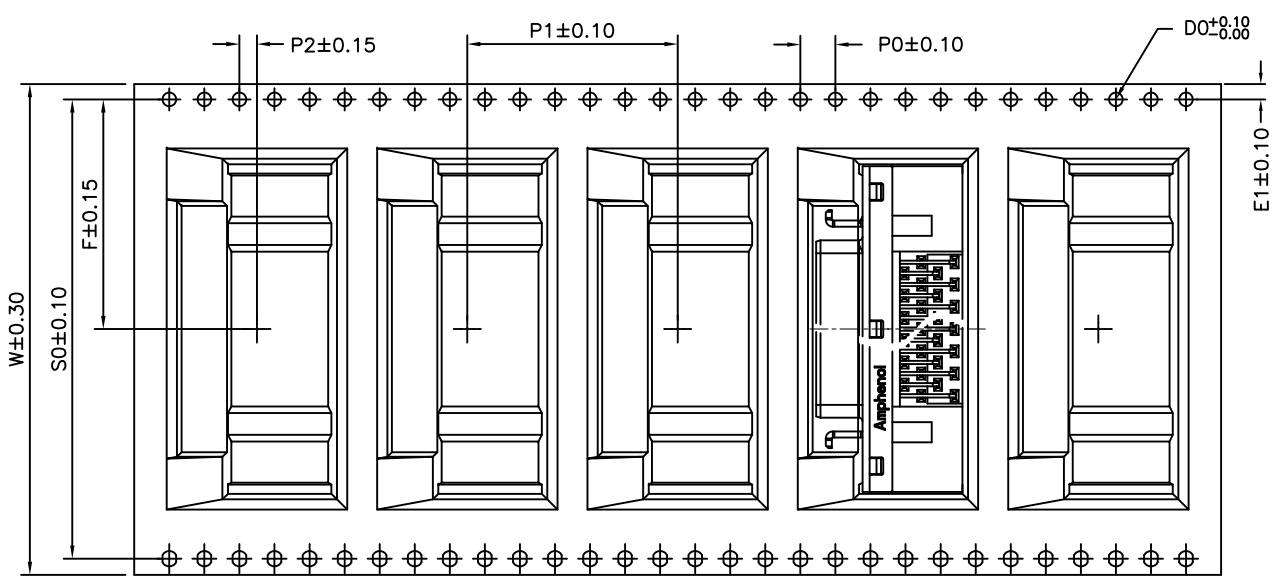
**CUSTOMER DRAWING**

UNLESS OTHERWISE SPECIFIED TOLERANCES U.S. METRIC .X +/- 0.50 .XX +/- 0.25 .XXX +/- 0.10 FRACTIONS +/- ANGLES +/- 3°	APPROVAL		DATE	Amphenol
	DRAWN	Blr Di	09/27/10	
FOR MATERIALS AND FINISHES SEE NOTES	CHECKED	Tony Tang	09/27/10	TITLE
REMOVE SHARP EDGES	DRAWING FILE : \DRAWING\858\C 858F2009B212009X-4.DWG			858 SERIES PCB R/A FEMALE SHIELDED RECEPCTACLE
DIMENSIONS	ANGLE OF PROJECTION			SIZE
U.S. INCHES (METRIC)	NONE			DRAWING NO. C 858FXXXB212009X
	SCALE NONE			REV. 4
	SHEET 2 OF 4			

This document is the property of Amphenol Corporation and is delivered on the express condition that it is not to be disclosed, reproduced or used, in whole or in part, for manufacture or sale by anyone other than Amphenol Corporation without its prior consent, & that no right is granted to disclose or to use any information in this document.

# CUSTOMER DRAWING

REVISIONS				
SYM	ECN	DESCRIPTION	DATE	APPROVED
		SEE SHEET 1		



Part Number	POS.	W	S0	F	P2	P1	P0	D0	T	B0	A0	K0	E1
858-F014-B212-009X	14	44	40.4	20.2	2.00	24.00	4.00	∅1.50	0.50	30.00	17.10	14.0	1.75
858-F026-B212-009X	26	56	52.4	26.2						37.60			
858-F036-B212-009X	36	56	52.4	26.2						43.95			
858-F050-B212-009X	50	72	68.4	34.2						52.84			
858-F068-B212-009X	68	88	84.4	42.2						64.27			
858-F080-B212-009X	80	88	84.4	42.2						71.89			

## NOTES:

1. MEASURED FROM THE CENTERLINE OF SPROCKET HOLE TO CENTERLINE OF THE POCKET HOLE AND FROM THE CENTERLINE OF SPROCKET HOLE TO CENTERLINE OF THE POCKET HOLE
2. CUMULATIVE TOLERANCE OF 10 SPROCKET HOLES IS ±0.20
3. THIS THICKNESS IS APPLICABLE AS MEASURED AT THE EDGE OF THE TAPE
4. MATERIAL: ANTISTATIC POLYSTYRENE ALLOY, BLACK.
5. DIM IN MM, All dimensions meet EIA-481-C requirements.
6. ALLOWABLE CAMBER TO BE 1mm PER 100mm IN LENGTH, NON-CUMULATIVE OVER 250mm
7. SURFACE RESISTIVITY LESS THAN OR EQUAL TO 1.0x10E11 OHMS/SQUARE .
8. THE NUMBER DIMENSIONS ARE IMPORTANT DIMENSION, MUST BE CHECKED WHILE PRODUCTION.
9. PACKING QTY 150 pcs. PER REEL 4.4 M ON THE REEL 13"
10. DIMENSIONS MARKED WITH NUMBER ARE IMPORTANT, SHOULD BE CHECKED IN MASS PRODUCTION
11. MATERIAL SHOULD BE FULFILLED AMPHENOL SPEC# SSN002



UNLESS OTHERWISE SPECIFIED <b>TOLERANCES</b> U.S. METRIC .X +/- 0.50 .XX +/- 0.25 .XXX +/- 0.10 FRACTIONS +/- ANGLES +/- 3°	<b>APPROVAL</b> <b>DATE</b> DRAWN Bin Di 09/27/10 CHECKED Tony Tang 09/27/10 CHECKED		<b>Amphenol</b>  TITLE <b>858 SERIES PCB R/A FEMALE SHIELDED RECEPTACLE</b>	
	DRAWING FILE : VERMINDA.004.C 0807200912009-4.009			
	REMOVE SHARP EDGES DIMENSIONS U.S. INCHES METRIC MM	ANGLE OF PROJECTION 		SIZE DRAWING NO. <b>A3 C 858FXXB212009X</b>
	SCALE NONE    SHEET 3 OF 4			REV. <b>4</b>