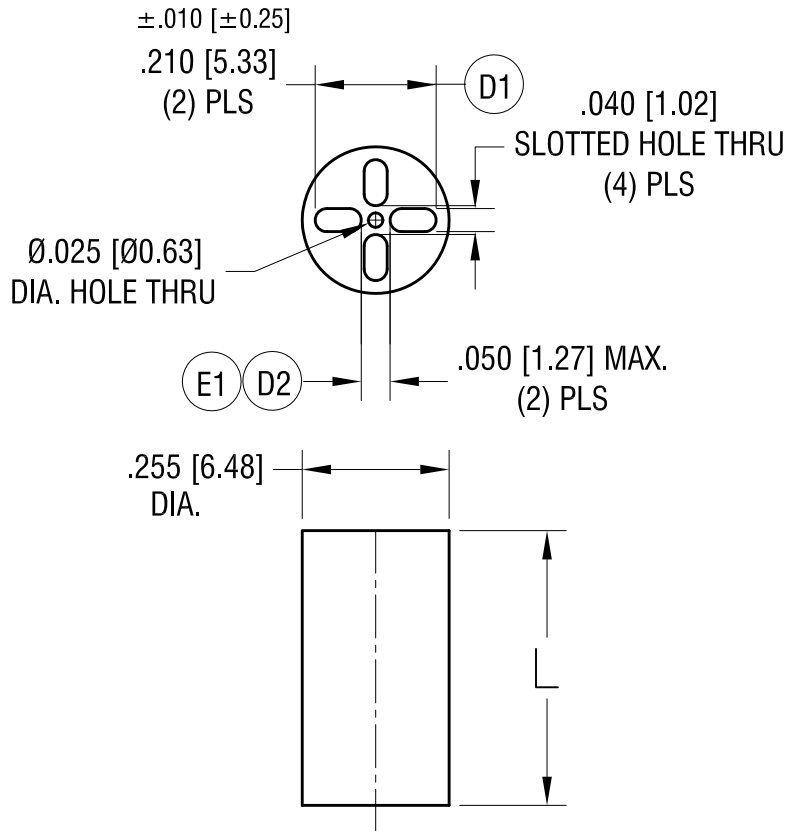


THIS DOCUMENT IS THE PROPERTY OF
KEYSTONE ELECTRONICS CORP. AND
SHALL NOT BE REPRODUCED, DISTRIBUTED
OR USED AS A BASIS FOR MANUFACTURE
WITHOUT PRIOR WRITTEN PERMISSION
FROM KEYSTONE ELECTRONICS CORP.

ACTUAL SIZE



P/N 8904



| PART NO. | 'L' DIM. |
|----------|-------------|
| 8900 | .120 [3.04] |
| 8901 | .140 [3.55] |
| 8902 | .160 [4.06] |
| 8903 | .180 [4.57] |
| 8904 | .200 [5.08] |
| 8905 | .220 [5.58] |
| 8906 | .240 [6.09] |
| 8907 | .250 [6.35] |
| 8908 | .260 [6.60] |
| 8909 | .280 [7.11] |
| 8910 | .300 [7.62] |
| 8911 | .320 [8.12] |
| 8912 | .340 [8.63] |
| 8913 | .350 [8.89] |
| 8914 | .360 [9.14] |
| 8915 | .380 [9.65] |

| | | |
|---------|---|------|
| 5.15.23 | $\textcircled{E1}$ WAS $.060 \pm .010$ CHANGE AS PER ECN 23-081 | E |
| 6.21.22 | $\textcircled{D1}$ WAS $.210 \pm .005$, $\textcircled{D2}$ WAS $.060 \pm .005$ CHANGE AS PER ECN 22-097 | D |
| 5.26.11 | CHANGE AS PER ECN 11-069 | C |
| 6.30.00 | CHANGE AS PER ECN 00-059 | B |
| 4.6.98 | CHANGE AS PER ECR 98-024 | A |
| DATE | DESCRIPTION | REV. |

| KEYSTONE ELECTRONICS CORP. | | | |
|--|---------------------------|----------------------|------------------|
| www.keyelco.com • NEW HYDE PARK NY 11040 • Tel (516)328-7500 | | | |
| PART NAME | | LED SPACER MOUNT | |
| MATERIAL | | PVC UL 94V-0 (BLACK) | |
| FINISH | - | DRN BY | BOONE |
| | | DATE | 3.30.95 |
| | | APP'D | RH |
| | | SCALE | 3X |
| TOLERANCES | INCH [MM] | CODE | DWG NO. |
| DECIMAL | $\pm .005$ [± 0.13] | C | 8900-8915 |
| ANGULAR | $\pm 1^\circ$ | | |
| UNLESS OTHERWISE SPECIFIED | | | |