

THIS DRAWING IS UNPUBLISHED. RELEASED FOR PUBLICATION
 © COPYRIGHT - BY TYCO ELECTRONICS CORPORATION. ALL RIGHTS RESERVED.

| LOC | DIST | REVISIONS | | | | | |
|-----|------|-----------|-----|---------------------------|---------|-----|------|
| AJ | 16 | P | LTR | DESCRIPTION | DATE | DWN | APVD |
| | | Z | | REVISED PER ECO-10-008433 | 24APR10 | HMR | KW |

- 1 COPPER ALLOY
- 2 TIN-LEAD PL PER ASTM-B-545
2.54 μm [.000100] MIN THK, WITH SUPPLEMENTAL ANTI-FRETTING LUBRICANT.
- 3 SILVER PL PER QQ-S-365
5.08 μm [.000200] MIN THK
- 4 TIN PLATE PER ASTM-B-545
2.54 μm [.000100] MIN THK, WITH SUPPLEMENTAL ANTI-FRETTING LUBRICANT.

SUPERSEDED BY
9-221132-4

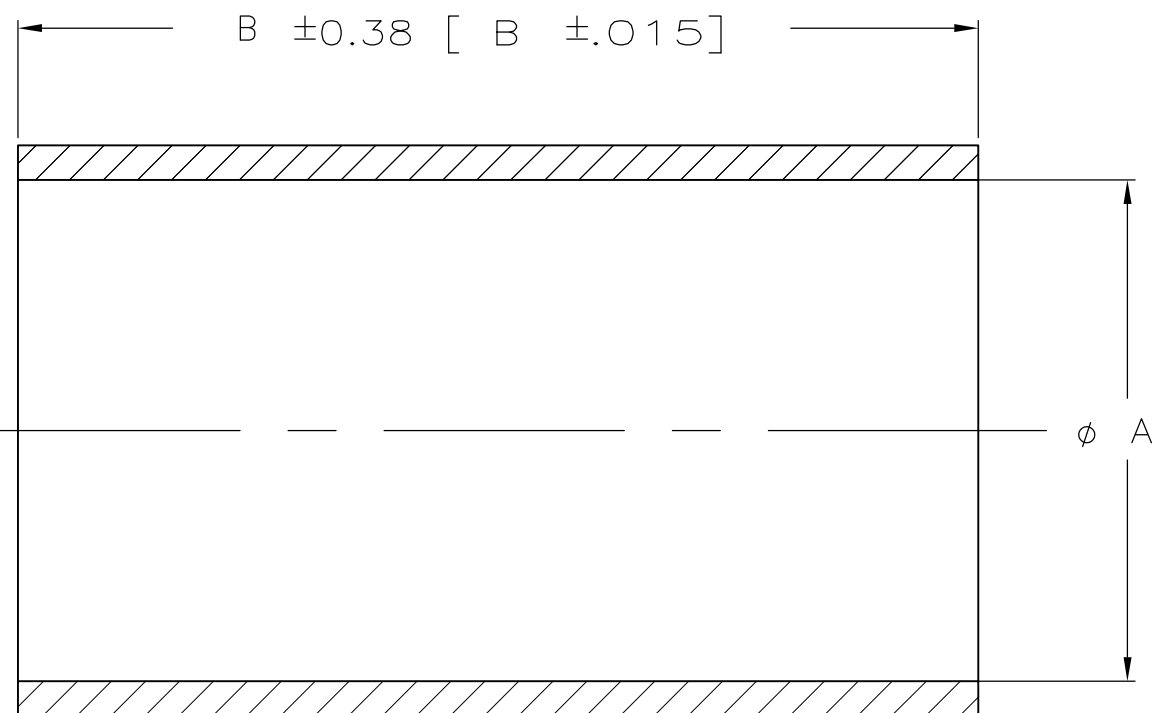
OBSOLETE

OBSOLETE

OBSOLETE

OBSOLETE

OBSOLETE



| | | | | |
|--------------|--------------|--------|----------|-------------|
| 12.70 [.500] | 6.81 [.268] | 4 | 1 | 9-221132-9 |
| 15.24 [.600] | 10.67 [.420] | 4 | 1 | 9-221132-8 |
| 12.70 [.500] | 5.84 [.230] | 4 | 1 | 9-221132-7 |
| 12.70 [.500] | 4.47 [.176] | 4 | 1 | 9-221132-6 |
| 15.24 [.600] | 11.30 [.445] | 4 | 1 | 9-221132-5 |
| 12.70 [.500] | 5.84 [.230] | 4 | 1 | 9-221132-4 |
| 12.70 [.500] | 6.63 [.261] | 4 | 1 | 9-221132-3 |
| 12.70 [.500] | 8.46 [.333] | 4 | 1 | 9-221132-2 |
| 12.70 [.500] | 6.55 [.258] | 4 | 1 | 9-221132-1 |
| 12.70 [.500] | 5.36 [.211] | 4 | 1 | 9-221132-0 |
| 12.70 [.500] | 5.61 [.221] | 4 | 1 | 8-221132-9 |
| 15.24 [.600] | 10.67 [.420] | 3 | 1 | 3-221132-7 |
| 12.70 [.500] | 6.81 [.268] | 2 | 1 | 3-221132-6 |
| 12.70 [.500] | 4.47 [.176] | 2 | 1 | 3-221132-3 |
| 12.70 [.500] | 5.61 [.221] | 2 | 1 | 3-221132-0 |
| 15.24 [.600] | 11.30 [.445] | 2 | 1 | 2-221132-9 |
| 12.70 [.500] | 5.84 [.230] | 2 | 1 | 2-221132-6 |
| 15.24 [.600] | 10.67 [.420] | 2 | 1 | 2-221132-3 |
| 12.70 [.500] | 6.63 [.261] | 2 | 1 | 2-221132-0 |
| 12.70 [.500] | 3.43 [.135] | 3 | 1 | 1-221132-7 |
| 12.70 [.500] | 6.55 [.258] | 3 | 1 | 1-221132-4 |
| 12.70 [.500] | 5.61 [.221] | 3 | 1 | 1-221132-3 |
| 12.70 [.500] | 5.36 [.211] | 3 | 1 | 1-221132-0 |
| 12.70 [.500] | 8.46 [.333] | 2 | 1 | 221132-9 |
| 12.70 [.500] | 6.55 [.258] | 2 | 1 | 221132-6 |
| 12.70 [.500] | 5.36 [.211] | 2 | 1 | 221132-3 |
| B | A | FINISH | MATERIAL | PART NUMBER |

| | | | | |
|---|--|----------------------------|---|--------------------|
| THIS DRAWING IS A CONTROLLED DOCUMENT. | | DWN J.L.GROFT 1-5-90 | Tyco Electronics Corporation Harrisburg, PA 17105-3608 | |
| DIMENSIONS: MM [INCHES] | | CHK R.E.RUTH 1/12/90 | NAME | |
| TOLERANCES UNLESS OTHERWISE SPECIFIED: 0 PLC ± - 1 PLC ± - 2 PLC ± 0.13 [.005] 3 PLC ± - 4 PLC ± - ANGLES ± - | | APVD - | PRODUCT SPEC - | |
| MATERIAL SEE NOTES | | FINISH SEE NOTES | APPLICATION SPEC - | RESTRICTED TO - |
| CUSTOMER DRAWING | | WEIGHT - | SIZE A3 | CAGE CODE 00779 |
| | | DRAWING NO G-221132 | | SCALE 10:1 |
| | | SHEET 1 OF 1 | | REV Z |