



## HEYClip™ Snap Rivets

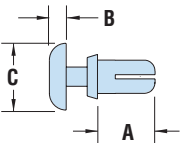
- Designed for **fast and easy installation with no tools** - just fingertip pressure required.
- Simply place rivet into the hole and press down on the head to fasten; legs expand to securely fasten components.
- To release, simply pull up on rivet head section.
- Round head provides a clean, finished look.
- Part Description Key: PR X-Y where X = Mounting Hole Diameter (inches) and Y = minimum Panel Thickness (inches).
- Standard Material: Nylon 6. Nylon 6/6 UL 94V-0 available by special order, consult Heyco.
- Standard Pack - 1,000/bag.

WILL FIT THESE PANELS				PART NO.			DESCRIPTION	PART DIMENSIONS						EXTRACTION FORCE			
MOUNTING HOLE DIA.		ASSEMBLED PANEL THICKNESS		Black	White	V-0 Black *		A Length		B Head Height		C Head Diameter		N	Style		
in.	mm.	Min. in.	Max. mm.					in.	mm.	in.	mm.	in.	mm.			in.	mm.
<b>PR Series</b>																	
.083	2,1	.02	0,5	.05	1,3	<b>9296</b>	<b>9297</b>	<b>9296F</b>	PR 083-024	.10	2,5						
		.05	1,3	.08	2,0	<b>9300</b>	<b>9301</b>	<b>9300F</b>	PR 083-051	.13	3,3						
		.08	2,0	.11	2,8	<b>9302</b>	<b>9303</b>	<b>9302F</b>	PR 083-083	.16	4,1	.05	1,3	.17	4,3	29	2
		.11	2,8	.14	3,6	<b>9304</b>	<b>9305</b>	<b>9304F</b>	PR 083-114	.19	4,8						
		.15	3,8	.17	4,3	<b>9306</b>	<b>9307</b>	<b>9306F</b>	PR 083-146	.22	5,6						
		.17	4,3	.20	5,1	<b>9308</b>	<b>9309</b>	<b>9308F</b>	PR 083-173	.25	6,4						
.102	2,6	.04	1,0	.08	2,0	<b>9020</b>	<b>9021</b>	<b>9020F</b>	PR 102-039	.13	3,3						
		.08	2,0	.12	3,0	<b>9022</b>	<b>9023</b>	<b>9022F</b>	PR 102-082	.17	4,3						
		.11	2,8	.14	3,6	<b>9024</b>	<b>9025</b>	<b>9024F</b>	PR 102-106	.19	4,8	.06	1,5	.20	5,1	49	2
		.13	3,3	.17	4,3	<b>9026</b>	<b>9027</b>	<b>9026F</b>	PR 102-134	.22	5,6						
		.17	4,3	.21	5,3	<b>9310</b>	<b>9311</b>	<b>9310F</b>	PR 102-169	.25	6,4						
		.20	5,1	.24	6,1	<b>9312</b>	<b>9313</b>	<b>9312F</b>	PR 102-201	.28	7,1						
.106	2,7	.13	3,3	.17	4,3	<b>19000</b>	<b>19001</b>	<b>19000F</b>	PR 106-133	.23	5,8	.06	1,5	.20	5,1	49	<b>NEW!</b>
.118	3,0	.14	3,5	.18	4,6	<b>19002</b>	<b>19003</b>	<b>19002F</b>	PR 118-137	.30	7,6	.07	1,8	.24	6,1	122	<b>NEW!</b>
		.14	3,5	.22	5,6	<b>19004</b>	<b>19005</b>	<b>19004F</b>	PR 118-138	.31	7,9	.06	1,5	.24	6,1		<b>NEW!</b>
.122	3,1	.04	1,0	.08	2,0	<b>9028</b>	<b>9029</b>	<b>9028F</b>	PR 122-039	.14	3,5						
		.08	2,0	.12	3,0	<b>9030</b>	<b>9031</b>	<b>9030F</b>	PR 122-079	.18	4,6						
		.12	3,0	.16	4,1	<b>9032</b>	<b>9033</b>	<b>9032F</b>	PR 122-118	.22	5,6						
		.16	4,1	.19	4,8	<b>9034</b>	<b>9035</b>	<b>9034F</b>	PR 122-157	.26	6,6						
		.20	5,1	.24	6,1	<b>9036</b>	<b>9037</b>	<b>9036F</b>	PR 122-197	.30	7,6						
		.22	5,5	.26	6,6	<b>9038</b>	<b>9039</b>	<b>9038F</b>	PR 122-217	.32	8,1	.06	1,5	.25	6,4	78	2
		.26	6,6	.30	7,6	<b>9040</b>	<b>9041</b>	<b>9040F</b>	PR 122-256	.35	8,9						
		.30	7,6	.34	8,6	<b>9042</b>	<b>9043</b>	<b>9042F</b>	PR 122-295	.39	9,9						
		.45	11,4	.51	13,0	<b>9314</b>	<b>9315</b>	<b>9314F</b>	PR 122-453	.57	14,5						
		.81	20,6	.85	21,6	<b>9316</b>	<b>9317</b>	<b>9316F</b>	PR 122-807	.91	23,1						
.142	3,6	.05	1,3	.08	2,0	<b>9044</b>	<b>9045</b>	<b>9044F</b>	PR 142-047	.14	3,5						
		.08	2,0	.12	3,0	<b>9046</b>	<b>9047</b>	<b>9046F</b>	PR 142-083	.18	4,6						
		.11	2,8	.14	3,6	<b>9048</b>	<b>9049</b>	<b>9048F</b>	PR 142-106	.20	5,1	.06	1,5	.25	6,4	118	1
		.12	3,0	.16	4,1	<b>9050</b>	<b>9051</b>	<b>9050F</b>	PR 142-118	.22	5,6						
		.15	3,8	.18	4,6	<b>9052</b>	<b>9053</b>	<b>9052F</b>	PR 142-146	.24	6,1						
		.18	4,6	.22	5,6	<b>9054</b>	<b>9055</b>	<b>9054F</b>	PR 142-177	.28	7,1						
.157	4,0	.09	2,3	.11	2,8	<b>19006</b>	<b>19007</b>	<b>19006F</b>	PR 157-086	.22	5,6	.08	2,0	.31	7,9	196	1
		.21	5,3	.24	6,1	<b>19008</b>	<b>19009</b>	<b>19008F</b>	PR 157-212	.31	7,9	.07	1,8	.32	8,1		<b>NEW!</b>
		.41	10,4	.45	11,4	<b>19010</b>	<b>19011</b>	<b>19010F</b>	PR 157-413	.53	13,5	.08	2,0	.31	7,9	196	2
																	<b>NEW!</b>
.161	4,1	.10	2,5	.14	3,5	<b>9058</b>	<b>9059</b>	<b>9058F</b>	PR 161-098	.20	5,1						
		.14	3,5	.18	4,6	<b>9060</b>	<b>9061</b>	<b>9060F</b>	PR 161-138	.24	6,1						
		.18	4,6	.22	5,6	<b>9062</b>	<b>9063</b>	<b>9062F</b>	PR 161-177	.28	7,1						
		.22	5,6	.26	6,6	<b>9064</b>	<b>9065</b>	<b>9064F</b>	PR 161-217	.32	8,1	.07	1,8	.32	8,1	196	1
		.26	6,6	.30	7,6	<b>9066</b>	<b>9067</b>	<b>9066F</b>	PR 161-256	.35	8,9						
		.30	7,6	.34	8,6	<b>9068</b>	<b>9069</b>	<b>9068F</b>	PR 161-295	.39	9,9						
		.35	8,9	.41	10,4	<b>9318</b>	<b>9319</b>	<b>9318F</b>	PR 161-354	.47	11,9						
		.49	12,4	.55	14,0	<b>9320</b>	<b>9321</b>	<b>9320F</b>	PR 161-492	.61	15,5						

Available in Small Packs

**NEW**

PART NO.		DESCRIPTION	QTY
Black	White		
<b>9028-P</b>	<b>9029-P</b>	PR 122-039 100PK	100
<b>9030-P</b>	<b>9031-P</b>	PR 122-079 100PK	
<b>9032-P</b>	<b>9033-P</b>	PR 122-118 100PK	
<b>9034-P</b>	<b>9035-P</b>	PR 122-157 100PK	
<b>9036-P</b>	<b>9037-P</b>	PR 122-197 100PK	
<b>9038-P</b>	<b>9039-P</b>	PR 122-217 100PK	
<b>9058-P</b>	<b>9059-P</b>	PR 161-098 50PK	50
<b>9060-P</b>	<b>9061-P</b>	PR 161-138 50PK	
<b>9062-P</b>	<b>9063-P</b>	PR 161-177 50PK	
<b>9064-P</b>	<b>9065-P</b>	PR 161-217 50PK	
<b>9066-P</b>	<b>9067-P</b>	PR 161-256 50PK	
<b>9068-P</b>	<b>9069-P</b>	PR 161-295 50PK	
<b>9074-P</b>	<b>9075-P</b>	PR 201-138 50PK	
<b>9076-P</b>	<b>9077-P</b>	PR 201-177 50PK	
<b>9078-P</b>	<b>9079-P</b>	PR 201-217 50PK	
<b>9080-P</b>	<b>9081-P</b>	PR 201-256 50PK	
<b>9082-P</b>	<b>9083-P</b>	PR 201-295 50PK	
<b>9084-P</b>	<b>9085-P</b>	PR 240-098 20PK	20
<b>9324-P</b>	<b>9325-P</b>	PR 240-138 20PK	



STYLE 1

STYLE 2

Quick Specs

Standard colors black and white.  
\*Black nylon 6/6 UL 94V-0.

Material	Nylon 6 UL V-2
Flammability Rating	94V-2
Temperature Range	-40°F (-40°C) to 239°F (115°C)

“Stay Connected” with



HEYware Products

a PennEngineering® Company

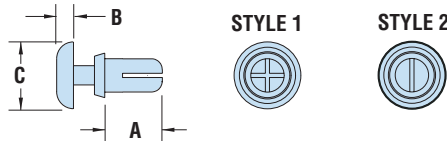


## HEYClip™ Snap Rivets – continued

WILL FIT THESE PANELS				PART NO.			DESCRIPTION	PART DIMENSIONS						EXTRACTION FORCE			
MOUNTING HOLE DIA.	ASSEMBLED PANEL THICKNESS		Black	White	V-0 Black *	A Length		B Head Height		C Head Diameter		N	Style				
	in.	mm.						in.	mm.	in.	mm.			in.	mm.		
<b>PR Series</b>																	
.201	5,1	.06	1,5	.10	2,5	9070	9071	9070F	PR 201-059	.18	4,6					245	1
		.10	2,5	.14	3,5	9072	9073	9072F	PR 201-098	.22	5,6						
		.14	3,5	.18	4,6	9074	9075	9074F	PR 201-138	.26	6,6						
		.18	4,6	.22	5,6	9076	9077	9076F	PR 201-177	.30	7,6	.09	2,3	.35	8,9		
		.22	5,6	.26	6,6	9078	9079	9078F	PR 201-217	.34	8,6						
		.26	6,6	.30	7,6	9080	9081	9080F	PR 201-256	.37	9,4						
		.30	7,6	.34	8,6	9082	9083	9082F	PR 201-295	.41	10,4						
.232	5,9	.12	3,0	.16	4,1	9322	9323	9322F	PR 232-118	.25	6,4	.11	2,8	.47	11,9		
.240	6,1	.10	2,5	.16	4,1	9084	9085	9084F	PR 240-098	.24	6,1	.10	2,5			294	
		.14	3,5	.22	5,6	9324	9325	9324F	PR 240-138	.32	8,1	.12	3,0				

Standard colors black and white.

\*Black nylon 6/6 UL 94V-0.



- Designed for **fast and easy installation with no tools** - just fingertip pressure required.
- Simply place rivet into the hole and press down on the head to fasten; legs expand to securely fasten components.
- To release, simply pull up on rivet head section.
- Round head provides a clean, finished look.
- Part Description Key: PR X-Y where X = Mounting Hole Diameter (inches) and Y = minimum Panel Thickness (inches).
- Standard Material: Nylon 6. Nylon 6/6 UL 94V-0 available by special order, consult Heyco.
- Standard Pack - 1,000/bag.
- See Quick Specs on opposite page.

## HEYClip™ Heat Resistant Snap Rivets

WILL FIT THESE PANELS				PART NO.			DESCRIPTION	PART DIMENSIONS						EXTRACTION FORCE	
MOUNTING HOLE DIA.	ASSEMBLED PANEL THICKNESS		Tan Nylon 4/6 UL94V-2			A Length		B Head Height		C Head Diameter		N	Style		
	in.	mm.	in.	mm.	in.			mm.	in.	mm.					
<b>PR Tan Series</b>															
.122	3,1	.04	1,0	.08	2,0	9028H	PR 122-039 HR Tan	.14	3,5					78	2
		.08	2,0	.12	3,0	9030H	PR 122-079 HR Tan	.18	4,5						
		.12	3,0	.16	4,0	9032H	PR 122-118 HR Tan	.22	5,6	.06	1,6	.25	6,4		
		.16	4,0	.19	5,0	9034H	PR 122-157 HR Tan	.26	6,5						
		.22	5,5	.26	6,5	9038H	PR 122-217 HR Tan	.32	8,0						
.142	3,6	.05	1,2	.08	2,1	9044H	PR 142-047 HR Tan	.14	3,5					118	1
		.08	2,1	.12	3,0	9046H	PR 142-083 HR Tan	.18	4,5						
		.11	2,7	.14	3,6	9048H	PR 142-106 HR Tan	.20	5,0	.06	1,6	.25	6,4		
		.12	3,0	.16	4,0	9050H	PR 142-118 HR Tan	.22	5,6						
.161	4,1	.10	2,5	.14	3,5	9058H	PR 161-098 HR Tan	.20	5,0					196	1
		.14	3,5	.18	4,5	9060H	PR 161-138 HR Tan	.24	6,0						
		.18	4,5	.22	5,5	9062H	PR 161-177 HR Tan	.28	7,0	.07	1,8	.32	8,0		
		.22	5,5	.26	6,5	9064H	PR 161-217 HR Tan	.32	8,0						
		.30	7,5	.34	8,5	9068H	PR 161-295 HR Tan	.39	10,0						

Standard color tan (beige).



- Molded from Nylon 4/6 94V-2 - **heat resistant to 266°F (130°C)**.
- Automotive **tan** (beige) color.
- Designed for fast and easy installation with no tools - just fingertip pressure required.
- Simply place rivet into the hole and press down on the head to fasten; legs expand to securely fasten components.
- Part Description Key: PR X-Y where X = Mounting Hole Diameter (inches) and Y = minimum Panel Thickness (inches).
- Standard Pack - 1,000/bag.

Material: Nylon 4/6  
 Flammability Rating: 94V-2  
 Temperature Range: -4°F (-18°C) to 266°F (130°C)

Quick Specs