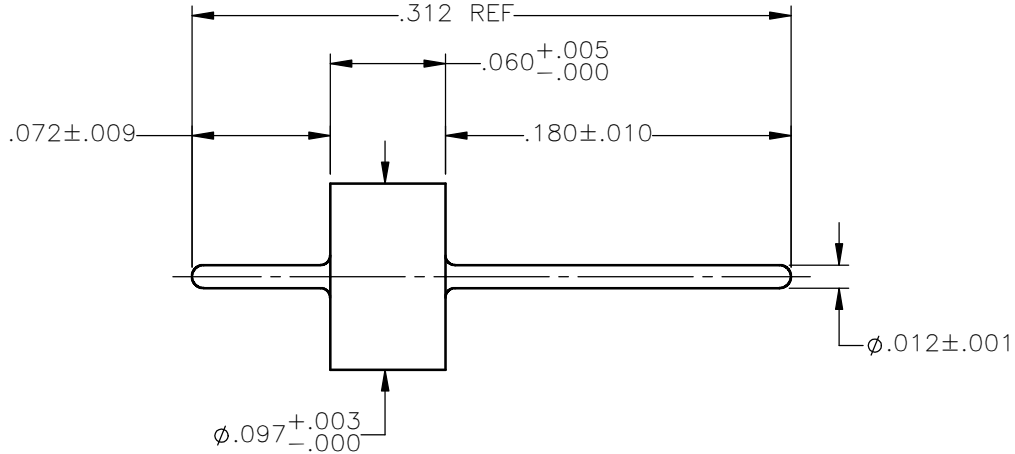


REVISIONS			
REV.	DESCRIPTION	DATE	APPROVED
A	INITIAL RELEASE	12/06/10	A.D.M
B	REDRAWN, ADDED TOLERANCES	06/22/16	J.S.
C	ADDED atm. TO NOTE 3 cc/sec	04/12/17	D.N.



NOTES:



1. MATERIALS:

1. OUTER RING AND PIN = KOVAR
2. GLASS BEAD = CORNING 7052

2. FINISHES:

1. OUTER RING AND PIN = GOLD PLATE PER MIL-G-45204, TYPE II, GRADE C, CLASS I, OVER NICKEL PER MIL-C-26074, CLASS I, OVER COPPER PER MIL-C-14550.

3. LEAK RATE TO BE LESS THEN 1×10^{-8} atm.cc/sec.

UNLESS OTHERWISE SPECIFIED DIMENSIONS ARE IN INCHES TOLERANCES ON	DWN:	DATE	 Property of Radiall This document cannot be reproduced or communicated to a third party without prior written permission of RADIALL.		
	J.S.	06/22/16			
DECIMAL	ANGLE	CHKD:	DATE	GLASS SEAL ASSEMBLY 50 OHM CONTROL DRAWING	
		N.D.	06/22/16		
		APVD:	DATE		
		J.M.	06/22/16		
REFERENCE:	MATERIALS & FINISHES:	SIZE	FSCM NO.	DWG NO.	REV
ORIGINATED: A.D.M. DATE: 12/06/10	SEE NOTES	A	19505	920-55	C
		SCALE	10:1	THIRD ANGLE PROJECTION	SHEET 1 OF 1

920-55