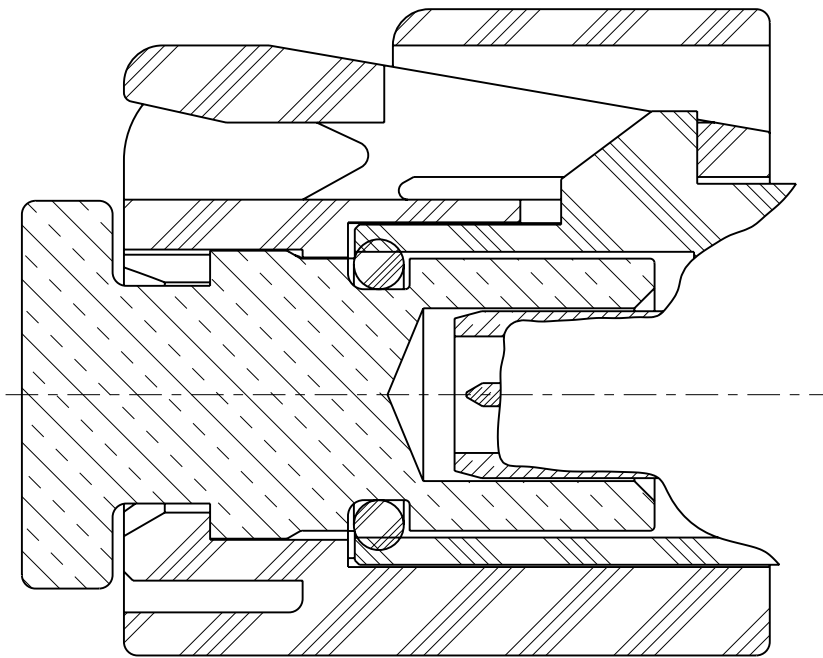
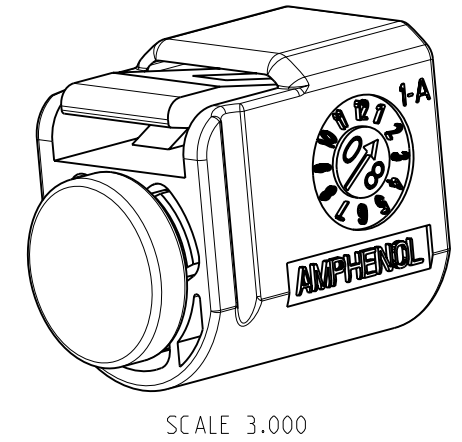
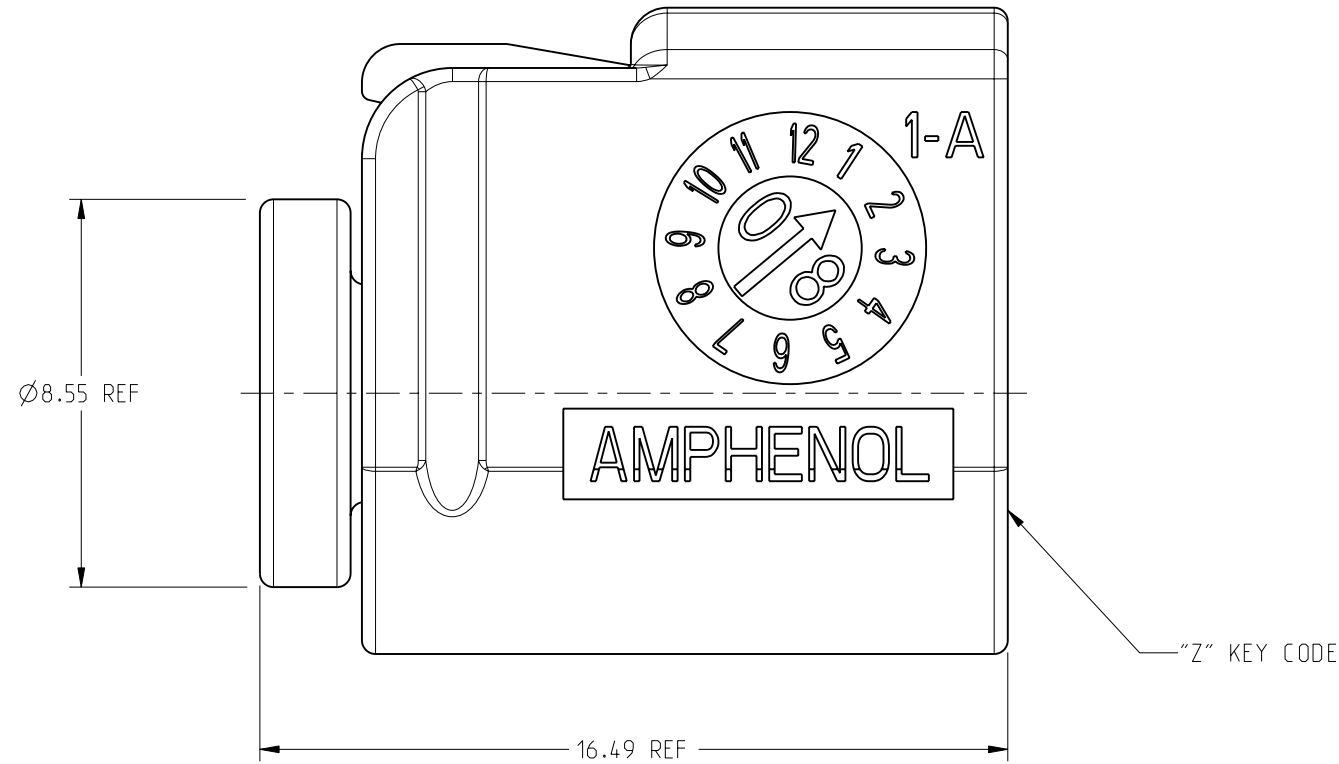


NOTES:

1. MATERIALS AND FINISHES:  
 BODY - BRASS, HIGH PHOSPHORUS ELECTROLESS NICKEL PLATING  
 GASKET - SILICONE RUBBER, RED  
 HOUSING - PPE+PS
2. PACKAGING:  
 A. QUANTITY: TRAY PACK  
 B. MARKING: PACKAGING TO BE MARKED  
 "AMPHENOL RF, 923-10908, AND DATE CODE"
3. ENVIRONMENTAL SEAL (WHEN MATED): IP69K

REVISIONS				
REV	DESCRIPTION	DATE	ECN	BY
A	RELEASE TO MFG.	10-Nov-22	16463	SH



CAP ASSEMBLY IN MATED CONDITION

**CUSTOMER OUTLINE DRAWING**

ALL OTHER SHEETS ARE FOR INTERNAL USE ONLY

NOTICE: These drawings, specifications, or other data (1) are, and remain the property of Amphenol corp. (2) must be returned upon request; and (3) are confidential and not to be disclosed to any person other than those to whom they are given by Amphenol Corp. The furnishing of these drawings, specifications, or other data by Amphenol Corp., or to any other person to anyone for any purpose is not to be regarded by implication or otherwise in any manner licensing, granting rights to permitting such holder or any other person to manufacture, use or sell any product, process or design, patented or otherwise, that may in any way be related to or disclosed by said drawings, specifications, or other data.		UNLESS OTHERWISE SPECIFIED DIMENSIONS ARE METRIC (INCHES) AND TOLERANCES ARE: $<0.5\text{mm} = \pm 0.05\text{mm}$ [ $<0.020 = \pm 0.002$ ] $0.5 - 6\text{mm} = \pm 0.1\text{mm}$ [ $>0.020 - 0.236 = \pm 0.004$ ] $>6.00 - 30\text{mm} = \pm 0.2\text{mm}$ [ $>0.236 - 1.181 = \pm 0.008$ ] $>30.00 - 120\text{mm} = \pm 0.3\text{mm}$ [ $>1.181 - 4.725 = \pm 0.012$ ] ANGLES = $\pm 1^\circ$		MATERIAL SEE NOTE 1		TITLE CAP, JACK, GEN3.5 SEALED FAKRA		<b>Amphenol RF</b>	
THIRD ANGLE PROJ.		REFERENCE ---		ENGR.1 J. SPROULE		ENGR.2 L. QIN		DATE 28-JUL-22	
EAR# 11140		SHEET NO. 2 OF 2		SCALE: 6.0:1.0		DRAWING NO. 923-10908 ITEM NO. 923-10908 PART NO. 923-10908		REV <b>A</b>	