

AirborneM2M™ Dual Band (2.4 GHz, 5 GHz) Wi-Fi Ethernet Bridge/Router – Embedded OEM & Carrier Board

Model BB-ABDN-ER-DP553



www.advantech.com



FEATURES / BENEFITS

- 10/100 Mbps to 802.11a/b/g/n dual band (2.4, 5 GHz) Wi-Fi Ethernet bridge/router
- Enterprise class wireless security (WPA2-Enterprise, WPA, WEP, EAP)
- Up to 65 Mbps (band dependent)
- Wide operating temperature range: -20 to +80 °C
- OEM open board, industrial design
- USA, Canada, EU approvals
- Antenna, 5VDC power supply, USA power cord included

AirborneM2M Enterprise Wi-Fi boards are built for networking equipment in an array of machine to machine (M2M) applications. The small compact form factor makes it easy and cost-effective to integrate into your solution.

Dual-Band Wi-Fi

Model BB-ABDN-ER-DP553, Wi-Fi Ethernet Bridge/Router, establishes wireless connections over both 2.4 GHz and 5 GHz bands. Whenever the 2.4 GHz airspace is overcrowded with competing wireless transmission, it can be switched over to 5 GHz band to keep data flowing.

Enterprise Class Security

Security protocols are important to mission-critical wireless M2M applications. AirborneM2M multi-layered security approach addresses the requirements of Enterprise-class networks and corporate IT departments. Advanced security features include wireless security (802.11i/WPA2 Enterprise); network security (EAP authentication and certificate support); communication security (SSH functionality and fully encrypted data tunnels); and device security (multi-level encryption capability to protect configuration data).

Antenna, 5VDC power supply, and USA power cord included.

ORDERING INFORMATION

MODEL NUMBER	DESCRIPTION
BB-ABDN-ER-DP553 *	Ethernet Bridge & Router Embedded OEM board 802.11a/b/g/n Dual band (2.4 GHz, 5 GHz)

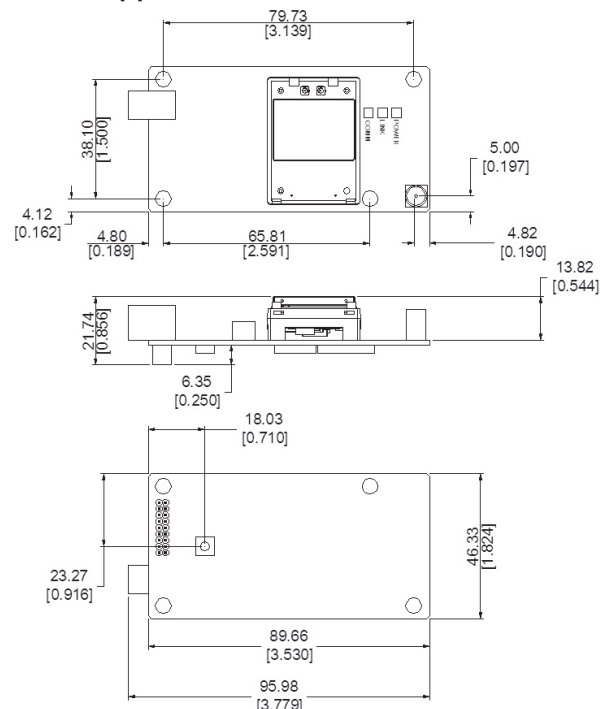
* Included with product:
 BB-CP-SDS-NA – Power cord, USA
 BB-PS-WDS – 120/240 VAC, 5 VDC, 10 W, 2.1 mm power supply
 BB-ACH2-DBAT-DP002 – 2 DBi, 2.4/5 GHz antenna, rubber duck, RP-SMA

ACCESSORIES – sold separately

BB-ACH0-CA-DP003-G – Airborne Ethernet Cable, RJ-45 to Hirose Connector

MECHANICAL DIAGRAM

Dimensions = mm [in]



All product specifications are subject to change without notice.
 BB-ABDN-ER-DP553_AirborneEthBr-Rtr-OpenBd_2320ds



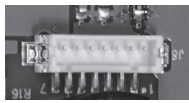
AirborneM2M™ Dual Band (2.4 GHz, 5 GHz) Wi-Fi Ethernet Bridge/Router – Embedded OEM & Carrier Board

Model BB-ABDN-ER-DP553

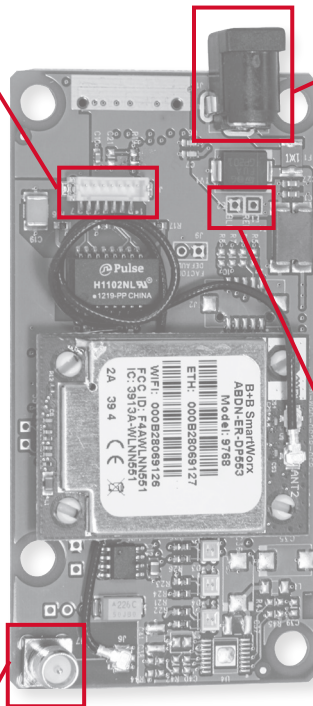
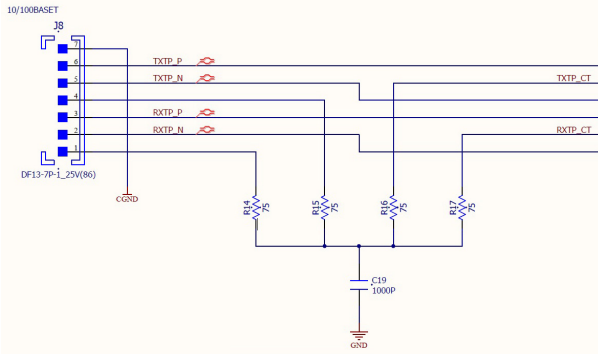


ETHERNET PORT

J8 - Hirose# DF13-7P-1.25V(50)
Mating Connector - Hirose# DF13-7S-1.25C

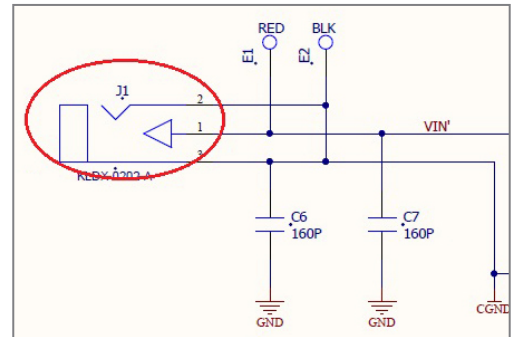


Seven Pins
7 6 5 4 3 2 1



POWER

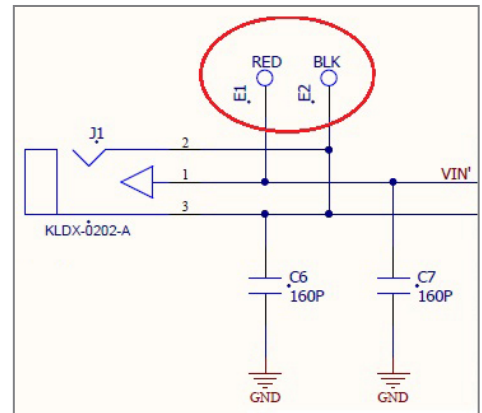
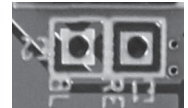
J1 - Switchcraft RAPC722X
Mating Connector - Switchcraft S760



PADS

Pads can be used to connect power instead of barrel jack.

On the board:
E2 is on the Left.
E1 is on the Right.



ANTENNA

NOTE: ANT 2 on the WiFi module is connected to J6 on the mother board using the included cable assembly. ANT 2 and J2 connectors are limited-use U.FL connectors.



If you desire to move these connections, use caution as damage may occur. J2, the main antenna connection, is an RP-SMA. The WiFi module is certified for use with the antenna listed in the accessory section.