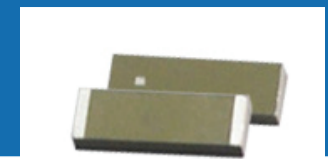


# 915 MHz Ceramic Chip Antenna



ACAG1204-915-T

12.0 x 4.0 x 1.6mm  
RoHS/RoHS II Compliant  
MSL = 1

## FEATURES

- Uses Low Temperature Co-Fired Ceramic (LTCC) Technology
- Gain of 3.42 dBi
- Omnidirectional
- VSWR of  $\leq 2.0$

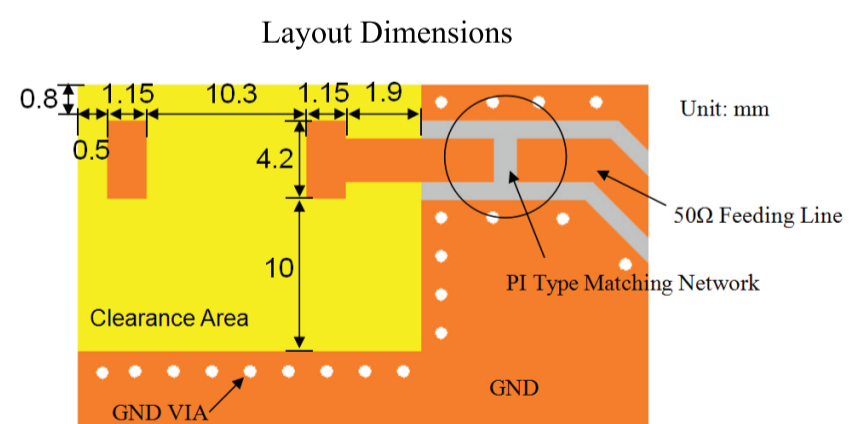
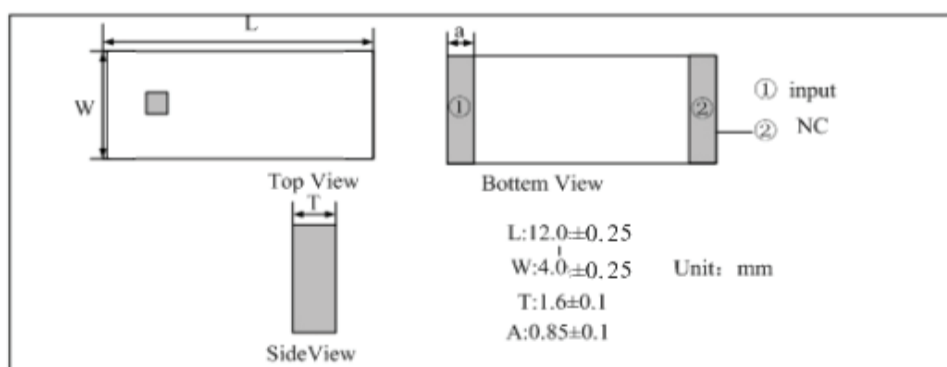
## APPLICATIONS

- ISM applications
- LORA
- Sigfox
- RFID

## ELECTRICAL SPECIFICATIONS

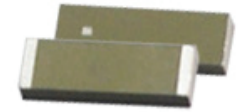
Item	Specification
Frequency	915MHz
Bandwidth	15MHz typ
VSWR	$\leq 2.0$
Impedance	50 $\Omega$
Gain	3.42dBi
Azimuth	Omni-directional
Polarization	Linear
Operating Temperature range	-40°C ~+ 85°C

## DIMENSIONS



Unit: mm

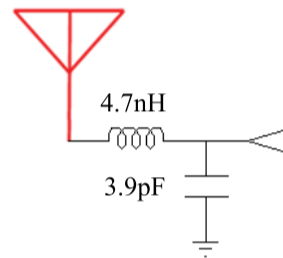
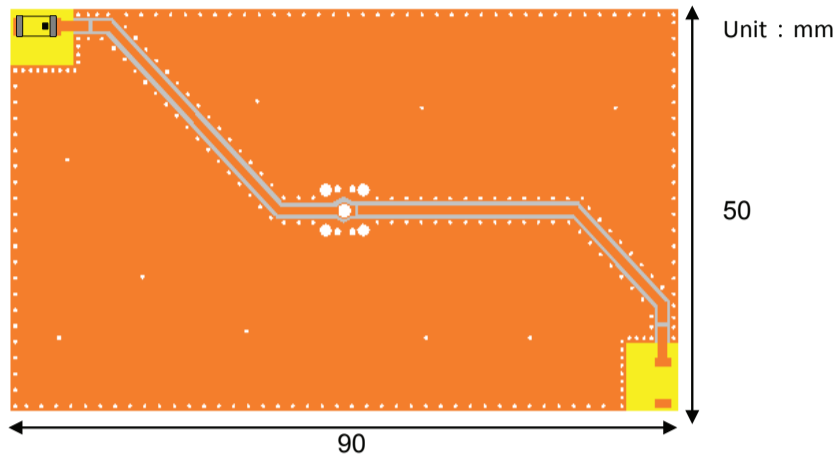
# 915 MHz Ceramic Chip Antenna



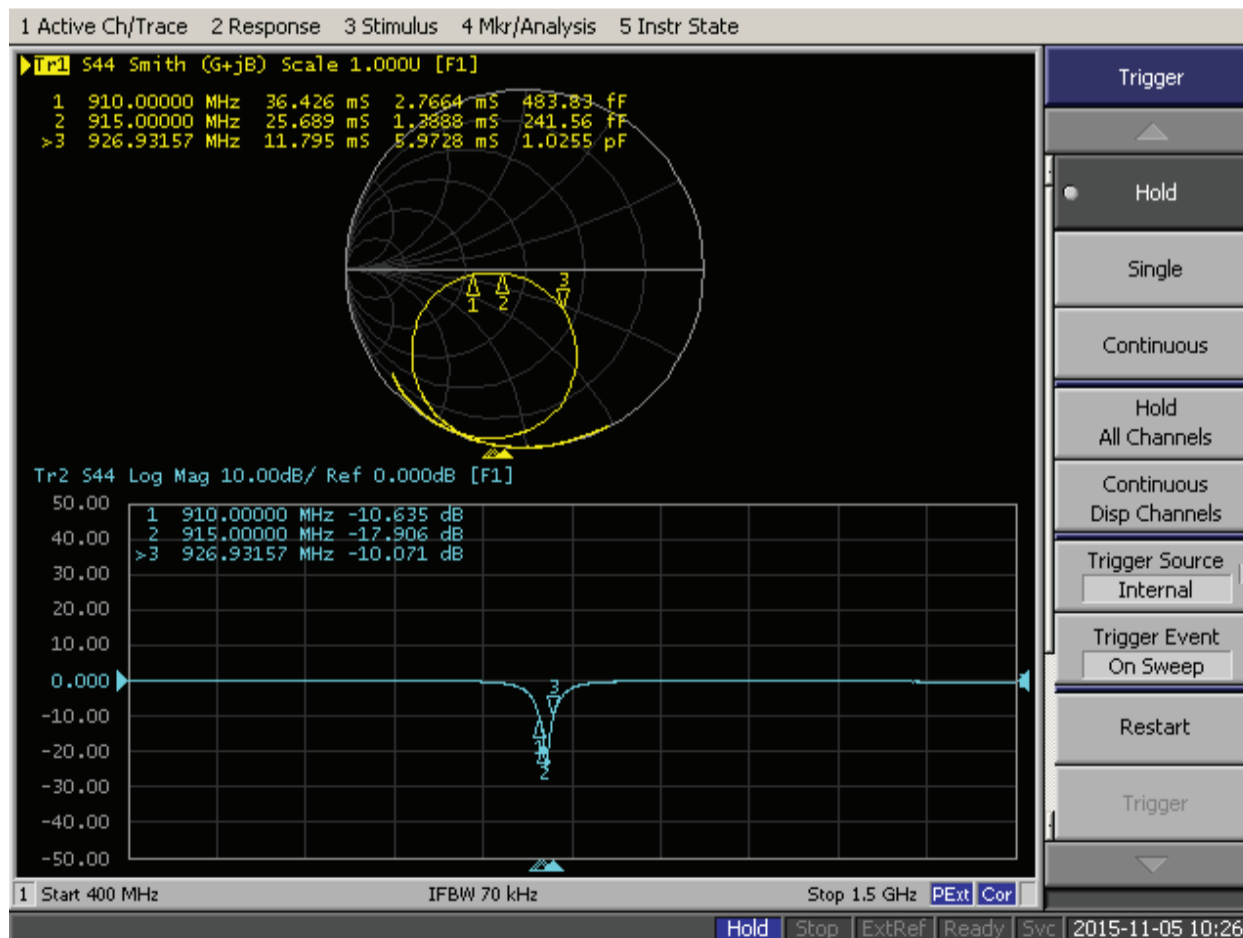
ACAG1204-915-T

12.0 x 4.0 x 1.6mm  
RoHS/RoHS II Compliant  
MSL = 1

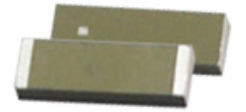
## EVALUATION BOARD AND MATCHING CIRCUITS



## ANTENNA RESPONSE – SMITH CHART AND RETURN LOSS S11



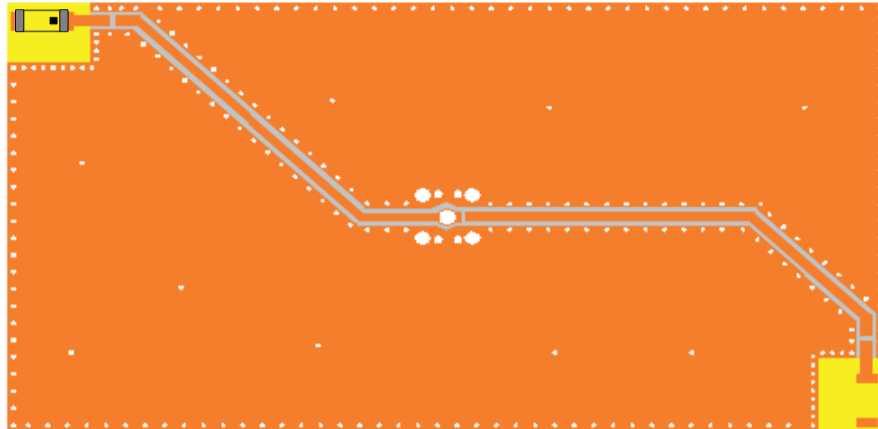
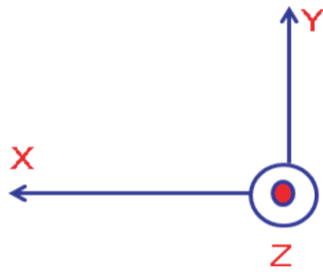
# 915 MHz Ceramic Chip Antenna



ACAG1204-915-T

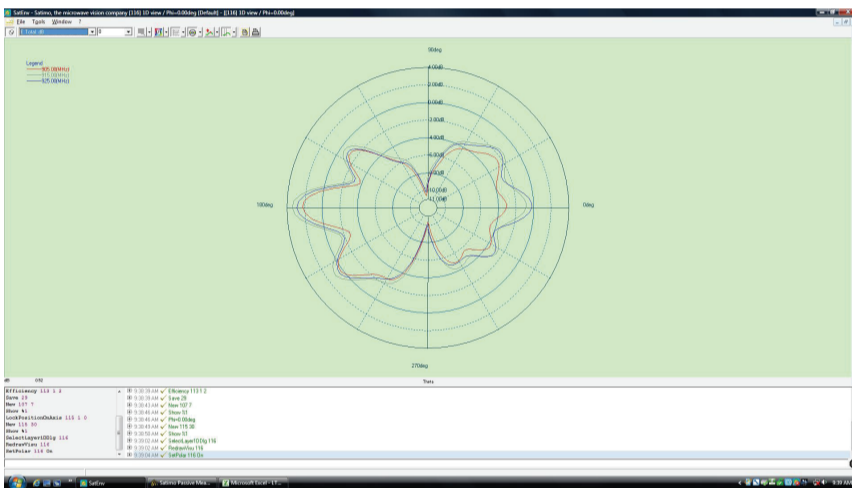
12.0 x 4.0 x 1.6mm  
RoHS/RoHS II Compliant  
MSL = 1

## RADIATION PATTERNS

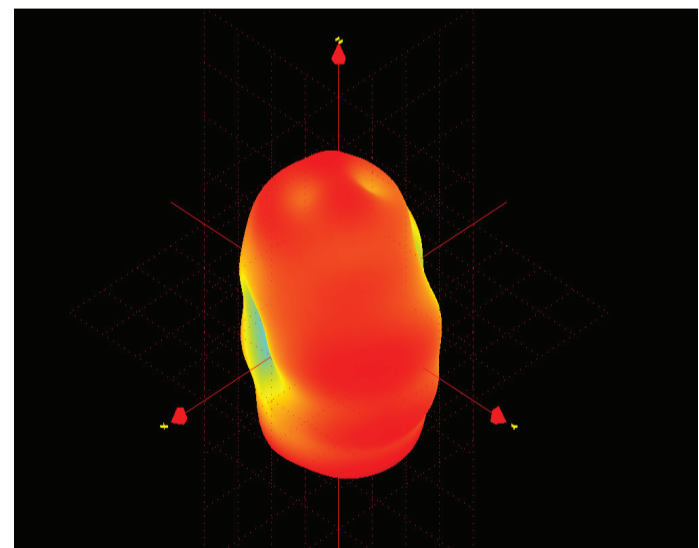
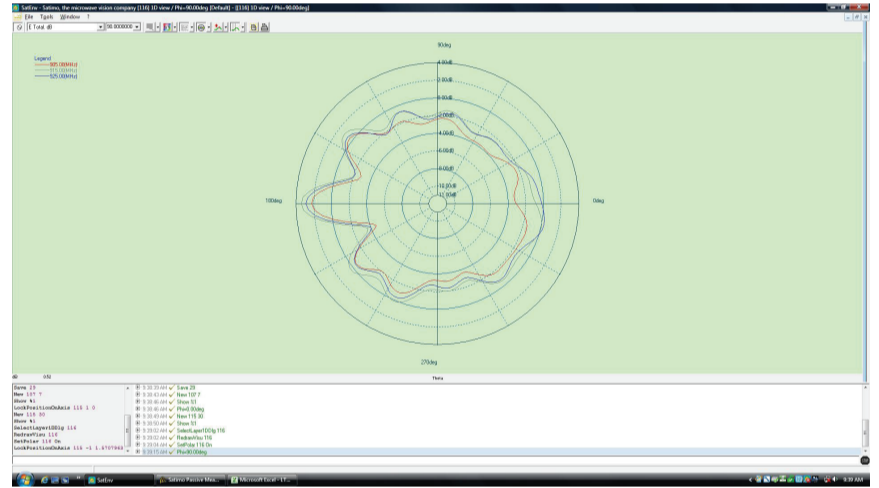


X-Z Plane

Y-Z Plane



X-Y Plane



Frequency (MHz)	910	915	925
Avg. Gain (dBi)	-2.56	-2.12	-2.25
Peak Gain (dBi)	3.15	3.42	3.08
Efficiency (%)	54	59	53