

# Software Licensing Guide

Revision 1.3, May 2015

Part Number:

82-100112-01

Analog Devices, Inc.  
Three Technology Way  
Norwood, MA 02062



## **Copyright Information**

©2015 Analog Devices, Inc., ALL RIGHTS RESERVED. This document may not be reproduced in any form without prior, express written consent from Analog Devices, Inc.

Printed in the USA.

## **Disclaimer**

Analog Devices, Inc. reserves the right to change this product without prior notice. Information furnished by Analog Devices is believed to be accurate and reliable. However, no responsibility is assumed by Analog Devices for its use; nor for any infringement of patents or other rights of third parties which may result from its use. No license is granted by implication or otherwise under the patent rights of Analog Devices, Inc.

## **Trademark and Service Mark Notice**

The Analog Devices logo, Blackfin, CrossCore, EngineerZone, EZ-Board, EZ-KIT Lite, EZ-Extender, SHARC, and VisualDSP++ are registered trademarks of Analog Devices, Inc.

Blackfin+, SHARC+, and EZ-KIT Mini are trademarks of Analog Devices, Inc.

All other brand and product names are trademarks or service marks of their respective owners.

# Contents

<b>Preface.....</b>	<b>1</b>
Purpose.....	1
Intended Audience.....	1
Manual Contents.....	1
What's New in this Manual.....	2
Technical Support.....	2
Product Information.....	2
Analog Devices Web Site.....	3
EngineerZone.....	3
Notation Conventions.....	3
<b>Licensing Overview.....</b>	<b>5</b>
Supported Operating Systems.....	5
System Requirements.....	6
Note to VisualDSP++ Users.....	6
Licensing Terminology.....	6
License Types.....	7
License Expiration and Subscription.....	7
License Locking Options.....	8
Licensing Options Summary .....	8
Obtaining a License Serial Number.....	10
Obtaining a Full License Serial Number.....	10
Obtaining an Evaluation License Serial Number.....	10
Locating License Serial Numbers.....	10
Getting a PC Ready for License Activation.....	11
Licensing Support.....	11
<b>Activating a License.....</b>	<b>13</b>
Starting the New License Wizard.....	13
Selecting a License Type.....	14
Entering a License Serial Number.....	15
License Activation Methods.....	15
Activating a License in One Step.....	16
Delayed License Activation.....	17
Validating a License.....	19
<b>Administering a Corporate Domain License.....</b>	<b>21</b>
Determining Your Corporate Domain.....	21

Locating a Corporate Domain License.....	22
Activating a Corporate License.....	22
Distributing a License File.....	22
<b>Troubleshooting.....</b>	<b>25</b>
Frequently Asked Questions (FAQs).....	25
Installation Error Messages.....	27
Installation Warning Messages.....	28

# Preface

Thank you for purchasing CrossCore® Embedded Studio (CCES), Analog Devices development software for Blackfin® and SHARC® processors.

## Purpose

The *CrossCore Software Licensing Guide* describes how to manage licenses for CCES software.

## Intended Audience

The primary audience for this guide is anyone who is working with CCES, a licensed product from Analog Devices. It describes the product licensing options, installation, and activation. The guide also includes the troubleshooting and FAQ sections for licensing issues.

## Manual Contents

The manual consists of:

- Chapter 1, *Licensing Overview*

Describes the available CCES license types and licensing options.

- Chapter 2, *Activating a License*

Details how to install and activate a CCES license.

- Chapter 3, *Administering a Corporate Domain License*

Describes how to install and administrate a corporate CCES domain license.

- Appendix A, *Troubleshooting*

Explains commonly encountered error messages and provides answers to frequently asked questions.

- Appendix B, *Licensing Support*

Describes how to contact Analog Devices regarding licensing issues.

## What's New in this Manual

This is Revision 1.3 of the *CrossCore Software Licensing Guide*. In this revision, some procedures have been modified to match the CCES online help style.

## Technical Support

You can reach Analog Devices processors and DSP technical support in the following ways:

- Post your questions in the processors and DSP support community at EngineerZone®:

<http://ez.analog.com/community/dsp>

- Submit your questions to technical support directly at:

<http://www.analog.com/support>

- E-mail your questions about processors, DSPs, and tools development software from **CrossCore Embedded Studio** or **VisualDSP++**®:

Choose **Help > Email Support**. This creates an e-mail to [processor.tools.support@analog.com](mailto:processor.tools.support@analog.com) and automatically attaches your CrossCore Embedded Studio or VisualDSP++ version information and `license.dat` file.

- E-mail your questions about processors and processor applications to:

[processor.tools.support@analog.com](mailto:processor.tools.support@analog.com)

[processor.china@analog.com](mailto:processor.china@analog.com)

- Contact your Analog Devices sales office or authorized distributor. Locate one at:

<http://www.analog.com/adi-sales>

- Send questions by mail to:

Analog Devices, Inc.  
Three Technology Way  
P.O. Box 9106  
Norwood, MA 02062-9106  
USA

### **Note:**

For licensing support, contact [Licensing Support](#).

## Product Information

Product information can be obtained from the Analog Devices Web site and CrossCore Embedded Studio online help system.

## Analog Devices Web Site

The Analog Devices Web site, [www.analog.com](http://www.analog.com), provides information about a broad range of products— analog integrated circuits, amplifiers, converters, and digital signal processors.

To access a complete technical library for each processor family, go to [http://www.analog.com/processors/technical\\_library](http://www.analog.com/processors/technical_library). The manuals selection opens a list of current manuals related to the product as well as a link to the previous revisions of the manuals. When locating your manual title, note a possible errata check mark next to the title that leads to the current correction report against the manual.

Also note, MyAnalog is a free feature of the Analog Devices Web site that allows customization of a Web page to display only the latest information about products you are interested in. You can choose to receive weekly e-mail notifications containing updates to the Web pages that meet your interests, including documentation errata against all manuals. MyAnalog provides access to books, application notes, data sheets, code examples, and more.

Visit MyAnalog to sign up. If you are a registered user, just log on. Your user name is your e-mail address.




## EngineerZone

EngineerZone is a technical support forum from Analog Devices. It allows you direct access to ADI technical support engineers. You can search FAQs and technical information to get quick answers to your embedded processing and DSP design questions.

Use EngineerZone to connect with other DSP developers who face similar design challenges. You can also use this open forum to share knowledge and collaborate with the ADI support team and your peers. Visit <http://ez.analog.com> to sign up.

## Notation Conventions

Example	Description
<b>File &gt; Close</b>	Titles in bold style indicate the location of an item within the CrossCore Embedded Studio IDE's menu system (for example, the <b>Close</b> command appears on the <b>File</b> menu).
{this   that}	Alternative required items in syntax descriptions appear within curly brackets and separated by vertical bars; read the example as <i>this</i> or <i>that</i> . One or the other is required.
[this   that]	Optional items in syntax descriptions appear within brackets and separated by vertical bars; read the example as an optional <i>this</i> or <i>that</i> .

Example	Description
[this, ...]	Optional item lists in syntax descriptions appear within brackets delimited by commas and terminated with an ellipsis; read the example as an optional comma-separated list of <code>this</code> .
.SECTION	Commands, directives, keywords, and feature names are in text with <code>letter gothic font</code> .
filename	Non-keyword placeholders appear in text with <code>letter gothic font</code> and italic style format.
 <b>Note:</b>	<b>NOTE:</b> For correct operation, ... A note provides supplementary information on a related topic. In the online version of this book, the word <b>NOTE:</b> appears instead of this symbol.
 <b>Caution:</b>	<b>CAUTION:</b> Incorrect device operation may result if ... <b>CAUTION:</b> Device damage may result if ... A caution identifies conditions or inappropriate usage of the product that could lead to undesirable results or product damage. In the online version of this book, the word <b>CAUTION:</b> appears instead of this symbol.
 <b>Attention:</b>	<b>ATTENTION:</b> Injury to device users may result if ... A warning identifies conditions or inappropriate usage of the product that could lead to conditions that are potentially hazardous for devices users. In the online version of this book, the word <b>ATTENTION:</b> appears instead of this symbol.



# 2

## Licensing Overview

This chapter describes licensing options available for CrossCore Embedded Studio (CCES) 2.0.0 users.

The following topics are covered:

- [Supported Operating Systems](#)
- [System Requirements](#)
- [Note to VisualDSP++ Users](#)
- [Licensing Terminology](#)
- [License Types](#)
- [License Expiration and Subscription](#)
- [License Locking Options](#)
- [Licensing Options Summary](#)
- [Obtaining a License Serial Number](#)
- [Locating License Serial Numbers](#)
- [Getting a PC Ready for License Activation](#)

If you have any questions related to CCES licenses or licensing, contact [Technical Support](#).



### Note:

The software license agreement can be found in the `Docs` folder of the CCES installation.

## Supported Operating Systems

CCES 2.0.0 supports the following operating systems:


- Windows® 7 Professional, Enterprise, or Ultimate (32- and 64-bit)
- Windows 8.1 Pro or Enterprise (32 and 64-bit)
- Windows Vista™ Business, Enterprise, or Ultimate SP2 (32-bit only)
- Ubuntu 14.04 (32 and 64-bit)

**Warning:** Windows 7, Windows 8.1, and Windows Vista users may experience User Access Control (UAC) related errors if the software is installed into a protected location, such as Program Files or Program Files (x86). We recommend installing the software in a non-UAC-protected location.

## System Requirements

Verify that your PC has these minimum requirements for the CCES 2.0.0 installation:

- 2 GHz single core processor; 3.3GHz dual core or better recommended
- 1 GB RAM; 4GB or more recommended
- 2 GB available disk space
- One open USB port

 **Note:**

A faster disk drive decreases the build time, especially for a large amount of source files. 4GB of RAM or more will substantially increase the performance of the IDE.

 **Note:**

For proper viewing of documentation under Windows, Internet Explorer 9 or greater is recommended.

## Note to VisualDSP++ Users

CrossCore Embedded Studio is a new Analog Devices product: the graphical user environment and full development tool chain for digital signal processor applications. Although some aspects of CCES licensing are familiar to VisualDSP++ users, VisualDSP++ licenses themselves cannot be used with CCES.

## Licensing Terminology

### License Installation

License installation is the process of entering valid license information into CCES. A license that has been entered into CCES but not activated immediately is said to be “installed”.

### License Registration

License registration is the process during which a user informs Analog Devices that a license has been installed. License registration results in a validation code.

### License Activation

License activation is the process of unlocking the functionality of a CCES product by registering your serial number with Analog Devices. Activation includes license installation, registration, and validation, all in one step.

### License Validation

License validation is the process of entering an Analog Devices validation code into CCES. License validation completes the activation of an installed license.

## License Types

### Tool chain Evaluation Licenses

A tool chain evaluation license provides 90 days of use on activation after which it expires and becomes permanently disabled.

If installed but not activated, this license allows 10 days of operation (grace or trial period) before it expires and becomes disabled. The license can be re-enabled by activation.

A tool chain evaluation license can be activated once on a particular machine.

### Add-in Evaluation Licenses

Certain add-ins (CCES software components), such as Micrium  $\mu$ C/OS-III™ Real-Time Kernel for CrossCore Embedded Studio, also have an evaluation license. Once activated, this license lets you install the add-in. You can install versions of the add-in with release dates up to 90 days after activation (see [License Expiration and Subscription](#)).

An add-in evaluation license can be activated once on a particular machine.

### Full Licenses

A full license does not expire once it has been activated.

Activation starts the license subscription, determining which product versions are enabled based on release date (see [License Expiration and Subscription](#)). Subsequent full licenses, called *maintenance licenses*, can be purchased at a reduced cost to renew the subscription term for an additional year.

If installed but not activated, a full tool chain license allows 10 days of operation before it expires and becomes disabled. The license can be re-enabled by activation.

- A full tool chain license can be activated a limited number of times, which allows the user to move the installation to a different machine.
- A full license for an add-in must be activated to allow the add-in to install. There is no grace period with this type of license.

## License Expiration and Subscription

License expiration and subscription are related but distinct terms. License expiration refers to overall viability of the license. For example, a tool chain evaluation license provides 90 days of use after activation, then expires. A full license, on the other hand, does not expire after activation. See [License Types](#) for more information.

License subscription determines what product versions you can use with a license. The subscription starts when the license is activated and ends at the end of the subscription interval. Products released

before the subscription ends can be used with the license. Products released after a subscription ends cannot be used with the license.

A subscription example: A full license with a one year subscription interval is activated on June 1, 2014. This license can be used with products that have release dates up to and including June 1, 2015. To use products with release dates beyond this date, the user needs to activate a new license. Note that you continue to use products that were released before the subscription ends even after the subscription itself has expired. The subscription determines whether or not newer versions of the product may be used.

To renew a subscription, a maintenance license must be purchased and activated. Contact your Analog Devices sales office or authorized distributor. Locate one at <http://www.analog.com/adi-sales>.

## License Locking Options

### Node-Locked Licenses

Occasionally referred to as a single-user license or a per user license, a node-locked license is locked to the machine host ID of a specific host computer and provides a single license “seat”. Once installed, the product runs on that one computer only.

The machine host ID typically refers to the Media Access Control (MAC) address of the network card or motherboard. CCES uses MAC addresses as host IDs and supports the use of multiple MAC addresses in its licensing scheme.

### Corporate Domain Licenses

Corporate domain licenses lock to a network domain name, such as \*.subdomain.yourcompany.com.

A license locks to one specific type of host ID. The license locking option cannot be changed.

## Licensing Options Summary

Licensing controls the operation and installation of the CCES 2.0.0 features and components. The licensing options are summarized in the following tables.

**Table 1. Licensing Options for CCES Tool Chain**

Type Prefix	Evaluation - EVAL	Full - ADI
Applies to	Full tool chain operation	Full tool chain operation (For add-ins, see the following table.)
Expiration	90 days	Permanent
Processor family	Blackfin and SHARC	Blackfin and SHARC

Type Prefix	Evaluation - EVAL	Full - ADI
Locking options	Node-locked	Node-locked or corporate domain
Subscription	None	1 year

Table 2. Licensing Options for CCES Add-ins

Type Prefix	Evaluation - EVAL	Full - ADI
Applies to	µC/OS-III add-in installation	Add-ins installation (For tool chain operation, see the previous table.)
Expiration	Permanent	Permanent
Processor family	Blackfin and SHARC	Blackfin and SHARC
Locking options	Node-locked	Node-locked
Subscription	90 days	1 year

For example, an evaluation license for the CCES development tool chain EVAL-CCES-XXXX-XXXX-XXXX-XXXX-XXXX-XXXX-XXXX-XXXX:

- Has a serial number prefix of EVAL
- Allows use of the full development tool chain
- Expires 90 days after activation
- Allows use of Blackfin and SHARC processors
- Is node-locked to the MAC address (physical address of the network card) of a specific computer
- Does not have a subscription interval

A full license for the CCES development tool chain, ADI-CCES-XXXX-XXXX-XXXX-XXXX-XXXX-XXXX-XXXX-XXXX:

- Has a serial number prefix of ADI
- Is permanent once activated
- Allows use of Blackfin and SHARC processors
- Is node-locked to the MAC address of a specific computer or a corporate network domain name
- Has a one-year subscription interval

A full license for an add-in, such as Micrium µC/OS-III, ADI-[UCOS3]-XXXX-XXXX-XXXX-XXXX-XXXX-XXXX-XXXX-XXXX:

- Has a serial number prefix of ADI

- Is permanent once activated
- Allows use of Blackfin and SHARC processors
- Is node-locked to the MAC address of a specific computer
- Has a one-year subscription interval

## Obtaining a License Serial Number

This section covers the following topics:

- [Obtaining a Full License Serial Number](#)
- [Obtaining an Evaluation License Serial Number](#)



**Note:**

An evaluation license (EVAL) can be upgraded to a full license (ADI).

## Obtaining a Full License Serial Number

To obtain a full license:

Purchase a full license from:

- Analog Devices directly. Call (800)262-5645, 781-937-2384, or go to the buy online facility at [http://www.analog.com/en/content/buy\\_online/fca.html](http://www.analog.com/en/content/buy_online/fca.html).
- Depending on your location, an Analog Devices local sales office or authorized distributor. To locate one, go to <http://www.analog.com/salesdir/continent.asp>.

A purchased copy of CCES is accompanied by an ADI serial number.

## Obtaining an Evaluation License Serial Number

To obtain an evaluation license:

Install the **CrossCore Embedded Studio** software.

CCES offers a tool chain evaluation license the first time it runs. CCES also offers an evaluation license for a Micrium  $\mu$ C/OS add-in the first time you install  $\mu$ C/OS.



**Note:**

An evaluation copy of CCES is accompanied by an EVAL serial number.

## Locating License Serial Numbers

It is assumed that the CCES software is installed, licensed, and running on your computer.

1. To locate a CCES license serial number:
  - a) Choose **Help > Manage Licenses**.

The **Manage Licenses** dialog box appears.

**Tip:** Use the dialog box to look up information pertaining to CCES licenses installed on a computer and perform various licensing tasks.

2. To copy a serial number of the license to the system clipboard:
  - a) Select the serial number.
  - b) Choose **Copy serial number** from the context menu.
3. To copy the entire license report to the system clipboard:
  - a) Click **Report**.

The **License Report** dialog box appears.

- b) Click **Copy**.

Choosing **Help > Email Support** automatically creates an e-mail message to [processor.tools.support@analog.com](mailto:processor.tools.support@analog.com), generates, and attaches the product information report to the message.

## Getting a PC Ready for License Activation

License activation requires TCP/IP network (Internet) access.

Ensure your PC is ready to activate a CCES license:

1. Connect your PC to the Internet.
2. Ensure that firewall settings allow interaction with the Analog Devices licensing server.
3. If your license is node-locked, ensure the computer has a valid MAC address:
  - a) On computers with Windows OS, you can view all current TCP/IP network configuration values by running the following command at the command prompt: `ipconfig/all`

Docking or undocking a laptop can affect the MAC addresses availability.

## Licensing Support

If you still are experiencing a problem after trying to solve it using the information in this guide, contact Analog Devices, Inc.

### E-Mail Support

You can obtain support via e-mail as follows:

#### Registration Support:

Contact Registration Support if you have any problems with registering or validating your license serial number, or if you have lost your license serial number. Use the following e-mail address:

[processor.tools.support@analog.com](mailto:processor.tools.support@analog.com).

#### Processor Tools Support:

For all other queries regarding CCES licensing, contact Processor Tools Support. Use the following e-mail address:

[processor.tools.support@analog.com](mailto:processor.tools.support@analog.com).

**Tip:** Choosing **Help > Email Support** automatically creates an e-mail message to the above address, generates, and attaches the product information report to the message.

### Information Required by Support

Before contacting Customer Support regarding a licensing issue, document the problem.

Prepare to communicate the following information:

- Software version provided by the **Help > About CrossCore Embedded Studio** dialog box
- License serial number(s) in question
- Contents of `license.dat` (if available)
- Screen captures of encountered error messages

**Tip:** Choosing **Help > Email Support** automatically creates an e-mail message to [processor.tools.support@analog.com](mailto:processor.tools.support@analog.com), generates, and attaches the product information report to the message.



# 3

## Activating a License

The chapter describes the processes of installing a license string (serial number) into the CCES Integrated Development Environment (IDE) via the **New License Wizard** as well as activating the license. CCES licenses are defined in *Licensing Terminology*.

The following topics are covered:

- *Starting the New License Wizard*
- *Selecting a License Type*
- *Entering a License Serial Number*
- *License Activation Methods*
  - *Activating a License in One Step*
  - *Delayed License Activation*
- *Validating a License*

Refer to the CCES online help for reference information about the IDE components related to software installation and licensing.

### Starting the New License Wizard

It is assumed that the CCES software is installed.

#### 1. Start the **New License Wizard**:

- If CCES is run the first time, or a new licensed add-in product is installed:

##### 1. Navigate to **CrossCore Embedded Studio Environment** via Windows **Start** menu.

A warning message appears.

##### 2. Click **Yes**.

- If CCES is run the second time and thereafter:

##### 1. Choose **Help > Manage Licenses > New**.

The **New License Wizard** appears.

2. (Optional) *Select your license type.*

## Selecting a License Type

It is assumed that the **New License Wizard** is launched (see *Starting the New License Wizard* and the following figure).

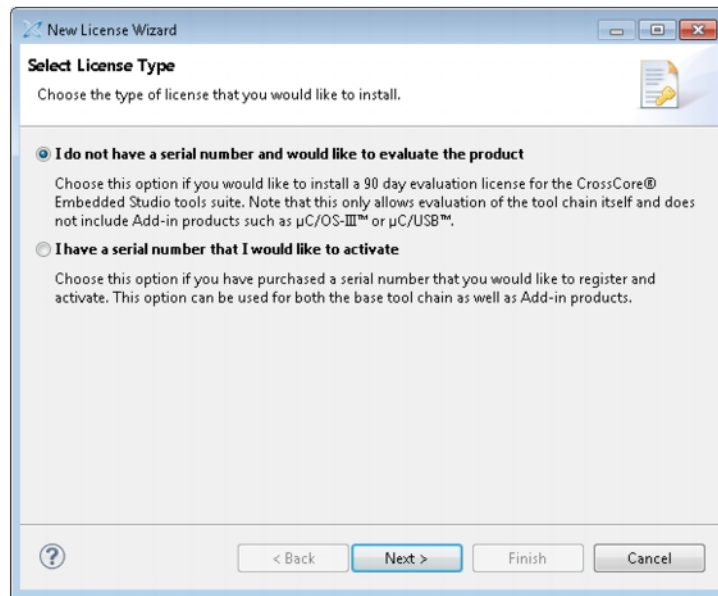


Figure 1. New License Wizard: Select License Type Page

CCES license types are defined in *License Types*.

1. Depending on whether you want to evaluate or activate a CCES product, do one of the following:

- If you would like to evaluate a CCES product (do not have a serial number for a permanent/full license):

1. **I do not have a serial number and would like to evaluate the product** is selected by default.

Click **Next**.

The **Select license activation method** page appears.

2. Choose your license activation method (see *License Activation Methods*).

 **Note:**

You are bypassing the license installation step, while evaluating the CCES software, for 90 days.

- If you would like to activate a CCES product (have a serial number for a permanent/full license):

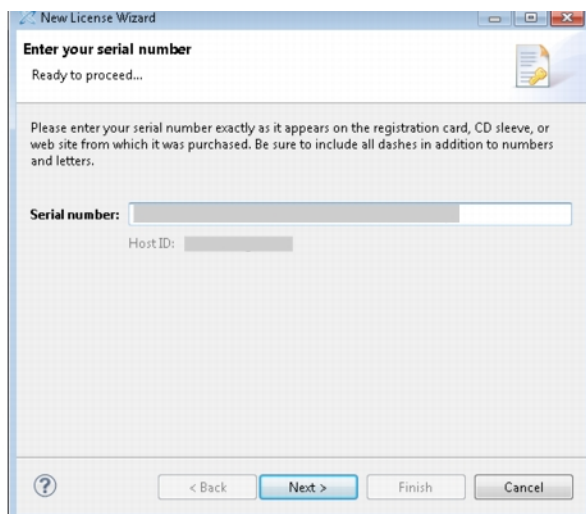
1. Select **I have a serial number that I would like to activate**.
2. Click **Next**.

The **Enter your serial number** page of the **New License Wizard** appears.

- (Optional) *Enter your license serial number.*

## Entering a License Serial Number

It is assumed that the **Enter your serial number** page of the **New License Wizard** is open (see *Starting the New License Wizard* and the following figure).



**Figure 2. New License Wizard: Enter your serial number Page**

To enter a license serial number:

- In **Serial Number**, enter the number exactly as it appears, including dashes.  
Entering a valid serial number displays your computer's host ID and enables the **Next** button.
- Click **Next**.

The **Select license activation method** page appears.

- (Optional) Choose your license activation method (see *License Activation Methods*).

## License Activation Methods

The following sections describe the process of license activation, as defined in *Licensing Terminology*.


A license can be activated immediately or after a trial period. The license activation can be performed:

- In one step if your PC is on the TCP/IP network (Internet). This is the most convenient license activation method, detailed in *Activating a License in One Step*.
- In three steps if your PC is not on the TCP/IP network. This method is referred to as *delayed activation* and detailed in *Delayed License Activation*.

In step 1, you install the license. For tool chain licenses, this provides access to the entire CCES tool chain until the specified license expiration date.

In step 2, you register the license. This results in the validation code sent back to you via e-mail.

In step 3, you validate the license (enter the validation code sent to you). This unlocks the trial period, making the license permanent.

 **Note:**

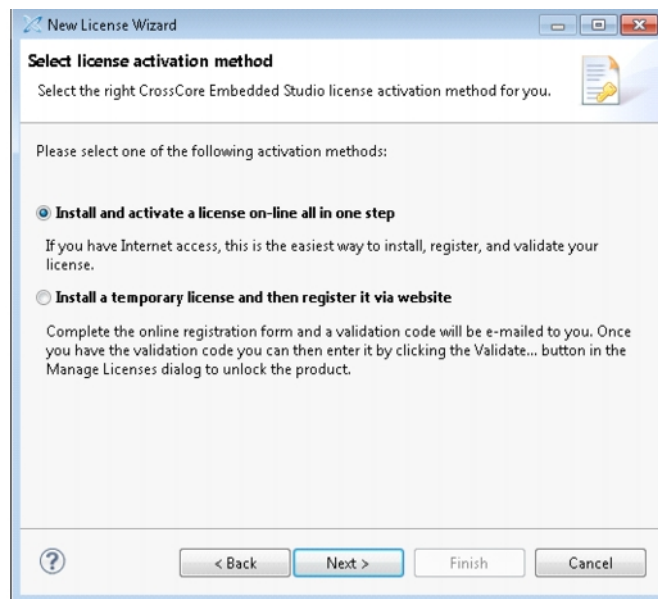
Corporate domain licenses and node-locked licenses are installed in the same manner, but a license file containing a corporate license can be distributed (*Distributing a License File*) to multiple computers on the corporate domain. For more information about administering corporate domain licenses, refer to *Administering a Corporate Domain License*.

## Activating a License in One Step

If your computer has an Internet connection, to activate a license in one step is the most convenient method.

It is assumed that:

1. Your PC is ready for the one-step activation; see *Getting a PC Ready for License Activation*.
2. The license serial number is entered in the **New License Wizard**; see *Entering a License Serial Number*.
3. The **Select license activation method** page of the wizard is open (see *Selecting a License Type*), and **Install and activate a license on-line all in one step** is selected (as in the following figure).



**Figure 3. Activating a License in One Step**

 **Note:**

If your computer does not have an Internet connection, or such a connection is isolated, select **Install a temporary license and then register it via website** and choose the *Delayed License Activation* method.

To activate the license in one step:

1. Click **Next**.

The **Prepare for one-step license activation** page appears.

2. Fill in the form.

The required fields are marked by an \* (asterisk).

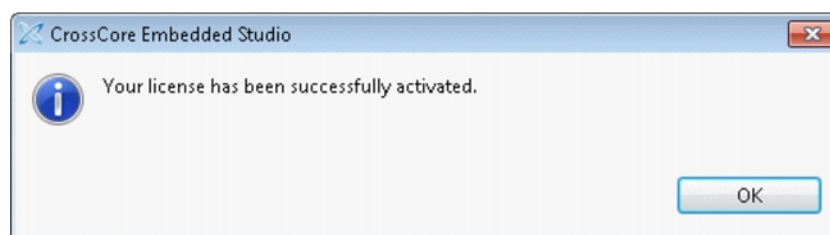
3. Click **Next**.

The **Prepare for one-step license activation (continued)** page appears.

4. Complete the form.

5. Click **Finish**.

The **Your license has been successfully activated** message (in the following figure) concludes the one-step license activation.



**Figure 4. Your license has been successfully activated Message**

6. Click **OK** to return to the IDE.

You successfully registered and activated your copy of the CCES 2.0.0 software. If you receive an error message during this procedure, refer to [Troubleshooting](#).

## Delayed License Activation

The delayed activation enables a customer to use the CCES tool chain for a specified trial period; the license activation date is delayed.

### **Note:**

CCES add-ins also support delayed license activation. Once these licenses are activated, they permit add-in installation.

It is assumed that:

1. The license serial number is entered in the **New License Wizard**; see [Entering a License Serial Number](#).
2. The **Select license activation method** page of the wizard is open; see [Selecting a License Type](#).

### **Note:**

If your computer has access to the Internet and Analog Devices licensing server, install and activate the license in one step. Keep the default selection, **Install and activate a license on-line all in one step** and refer to [Activate a License in One Step](#).

If your computer does not have access to the Internet or Analog Devices licensing server, to activate the license:

1. Select **Install a temporary license and then register it via website** (as in the following figure).

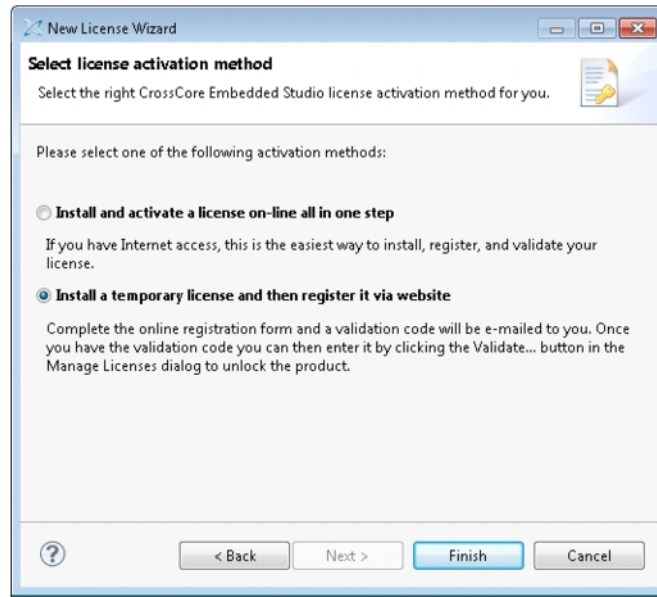


Figure 5. Delayed License Activation

2. Click **Finish**.

The **License Registration Instructions** Web page appears (see the following figure).

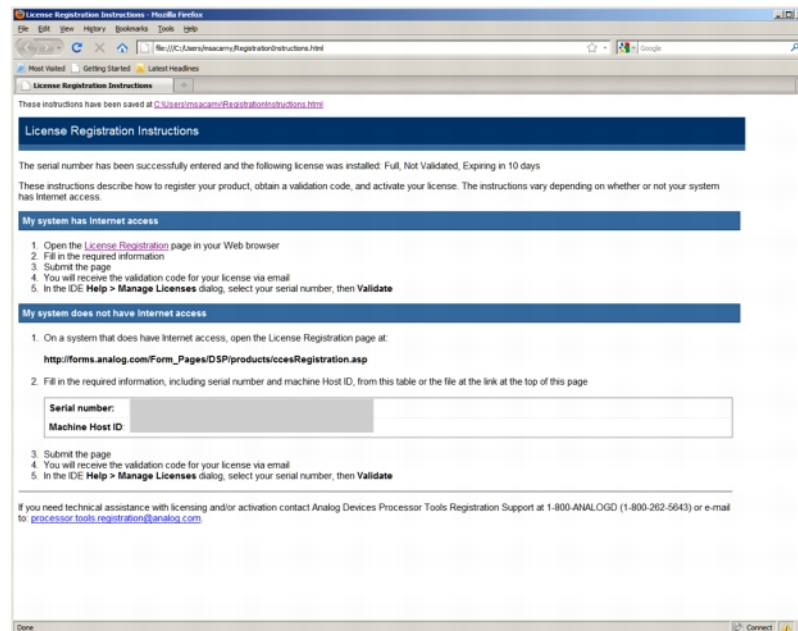



Figure 6. License Registration Instructions Page

The **License Registration Instructions** page indicates that your license is installed but not registered. At this point, a CCES tool chain license provides 10 days of unrestricted tool chain use. The page describes how to register your license, obtain a validation code, and complete activation of your license, with or without Internet access.

 **Note:**

Licenses for CCES add-ins install but are not valid until registered and activated.

3. Complete the registration process as instructed and submit the form.

Analog Devices processes your information and sends a validation code in email.

4. (Optional) *Validate your license.*

## Validating a License

Once you receive a validation code for your CCES product from Analog Devices via email, complete the license activation procedure.

It is assumed that the CrossCore Embedded Studio is installed and launched.

To permanently validate a license on a computer that is connected to the Internet:

1. Choose **Help > Manage Licenses**.

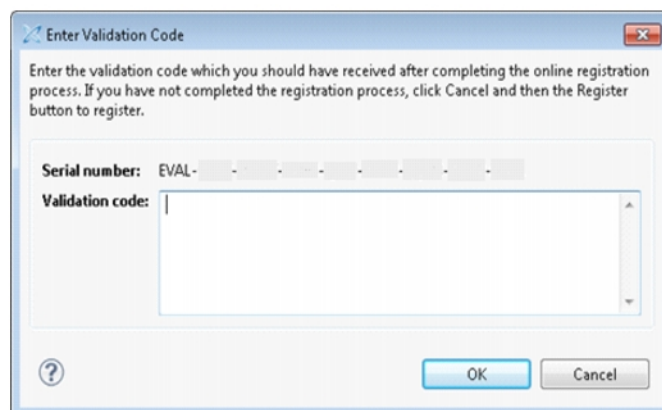
The **Manage Licenses** dialog box appears.

2. Select the serial number of the license that you want to validate.

Selecting a valid serial number enables the **Validate** command.

3. Click **Validate**.

The **Enter Validation Code** dialog box appears (see the following figure).



**Figure 7. Enter Validation Code Dialog Box**

4. In **Validation code**, enter the validation code sent to you.

Prevent typos by copying and pasting the license string.

5. Click **OK**.

## Activating a License

The successfully entered validation code results in a message indicating that a permanent license is created.

### 6. Click **OK**.

The license serial number is added to the **Manage Licenses** dialog box. Note that the status icon next to the license serial number has changed.

Search the online help for reference information about the IDE components related to software installation and licensing.



# 4

## Administering a Corporate Domain License

This chapter describes how to create and install license files based on a corporate domain address.

Rather than locking to individual MAC (Ethernet) addresses, a corporate domain license locks to a network domain, such as `*.subdomain.yourcompany.com`. A license file containing a corporate domain license can be copied to multiple computers on the domain, potentially reducing overall administrative overhead.

The following topics are covered:

- [Determining Your Corporate Domain](#)
- [Locating a Corporate Domain License](#)
- [Activating a Corporate License](#)
- [Distributing a License File](#)

### Determining Your Corporate Domain

This procedure applies to computers with Windows operating system.

View all current TCP/IP network configuration values by running the following command at the command prompt: `ipconfig/all`


 **Note:**

The corporate domain is the value of the primary Domain Name System (DNS) suffix. The corporate domain license is locked to this value, so all computers that use this license must have the same corporate domain value.

If the primary DNS suffix is blank, the computer is not on a domain, and a corporate domain license cannot be used.

## Locating a Corporate Domain License

- This procedure applies to computers with Windows operating system (Windows Vista, Windows 7, and Windows 8).
- It is assumed that the CCES is installed on a computer that is on the corporate domain.

 **Note:**

If you already have installed (entered) a license and want to locate the license folder, follow the procedure in [Locating License Serial Numbers](#). The complete path to the license file is at the beginning of the report.

The CCES installer creates a folder that holds license files on each computer.

Locate the license folder in <system drive>/ProgramData/Analog Devices/CrossCore Embedded Studio.

 **Note:**

On some computers, the license folder may be a hidden system folder.

## Activating a Corporate License

The process of activating a corporate domain license is similar to the process of activating a node-locked license.

Follow the instructions in one of the following procedures:

- [Activating a License in One Step](#)
- [Delayed License Activation](#)

 **Note:**

Validation codes for corporate domain licenses are sent via email, regardless of the activation method.

## Distributing a License File

It is assumed that:

- CrossCore Embedded Studio software is installed on the target computers.
- The corporate domain license is obtained (see [Obtaining License Serial Number](#)) and activated ( see [Activating License Serial Number](#)) on one of the computers to be covered by the license.

To distribute a corporate domain license on each computer to be covered by the license, do the following:

1. (Optional) Back up, delete, or rename the existing license file.

The **License Report** dialog box ([License Report](#)) provides the location of the folder that contains the license file.

2. From a computer on which the license is activated, copy the `license.dat` file into the license folder created by the CrossCore Embedded Studio installer.

CrossCore Embedded Studio now runs on the target computers.

# 5

## Troubleshooting

This chapter provides answers to common licensing problems and includes the following sections:

- [Frequently Asked Questions \(FAQs\)](#)
- [Installation Error Messages](#)
- [Installation Warning Messages](#)

If you still have questions related to CCES licenses or licensing after reading this chapter, contact [Technical Support](#) or [Licensing Support](#).

### Frequently Asked Questions (FAQs)

This section describes some common questions arisen during license installation and validation.

**Question:** *I have lost my serial number. Where can I find it, or how do I get a replacement?*

**Answer:** You can locate already installed serial numbers in the CCES IDE: **Help > Manage Licenses**. Refer to [Locating License Serial Numbers](#) for more information.

If you do not have CCES installed and licensed, e-mail Analog Devices with details of the person and company to whom the serial number was originally registered. For more information, refer to [Technical Support](#).

**Question:** *I've just installed a tool chain evaluation license using the "Install a temporary license and then register it via website" option of the New License Wizard. Now I get a message telling me that the license will expire in X days. I thought licenses were permanent?*

**Answer:** When evaluation licenses are installed this way, they have an initial grace period. An evaluation license runs for 90 days after activation. In order to unlock the complete evaluation period, an evaluation license must be validated.

Full tool chain licenses installed via the **Install a temporary license and then register it via website** option of the **New License Wizard** also have an initial grace period but become permanent when validated. Refer to [License Activation Methods](#) for more details.

**Question:** *I've just installed a full license for a CCES add-in using the Install a temporary license and then register it via website activation option of the New License Wizard. Now the status of the license shows as 'Expired.' Doesn't this license have a grace period?*

**Answer:** This type of license has no grace period: it must be validated to enable installation of its component. Refer to [License Types](#) for details.

**Question:** *What is the difference between license 'expiration' and license 'subscription expiration'?*

**Answer:** When a license is expired, it does not allow its products to be used at all. License subscription applies to licenses that are not expired and allows product use based on a product release date. See [Licensing Terminology](#) for more information.

**Question:** *How do I transfer my license to a new machine?*

**Answer:** Use the **New License Wizard** to activate your license on the new machine. If activation fails with a message “*The license has already been registered the maximum number of allowed times*”, request a registration history update via e-mail to [processor.tools.support@analog.com](mailto:processor.tools.support@analog.com). Include the serial number(s) in question.

**Question:** *How can I find out my registration history? That is, how do I find out which machines my serial number(s) are registered against?*


**Answer:** To request an up-to-date registration history, send an e-mail with the serial number(s) in question to [processor.tools.support@analog.com](mailto:processor.tools.support@analog.com).

**Question:** *I've just installed a license using the Install a temporary license and then register it via website activation option of the New License Wizard. The validation code that was e-mailed to me is being rejected. What could be the problem?*

**Answer:** Validation codes are valid for a particular serial number and host ID combination. If you are trying to activate your serial number on a second computer, you will have to register it on the new computer in order to receive the appropriate validation code. For more information, refer to [License Activation Methods](#).

**Question:** *Where is the license.dat file on my computer?*

**Answer:** There is only one `license.dat` file for all CCES installs on a computer, and the file is located in the license folder. The full path to the license file is given in the report generated by **Help > Manage Licenses > Report** or by **Help > Email Support**.

 **Note:**

The license folder may be a hidden system folder on some computers.

**Question:** *How do I install both a node-locked license and a corporate domain license on the same machine?*

**Answer:** Licenses of all types can coexist on the same machine. Use the **New License Wizard** to activate both licenses.

If you intend to install the corporate domain license on many machines, refer to [Determining Your Corporate Domain](#).

## Installation Error Messages

This section describes some common error messages issued during license installation and validation.

**Problem:** *A valid license could not be found.*

*Click Yes to install a license at this time.*

*Click No to close CCES.*

**Solution:** This message appears the first time CCES starts up or thereafter if there are no current licenses installed. Selecting **Yes** starts the **New License Wizard**.

**Problem:** *A valid license could not be found.*

*Click Yes to manage your license(s) now.*

*Click No to close CCES.*

**Solution:** This message appears if licenses have expired. Selecting **Yes** opens the **Manage Licenses** dialog box.

**Problem:** *There was a problem installing the license for this serial number. Reason: Invalid license file. The license file may be obsolete, corrupted, missing, or read-only.*

**Solution:** This message indicates a problem with the *license.dat* file. For example, the license file is a VisualDSP++ license file that is incompatible with CCES. Check the contents of *license.dat* located in

<system drive>/ProgramData/Analog Devices/CrossCore Embedded Studio (on Windows Vista, Windows 7, and Windows 8)

Also ensure that the file is not read-only. If the problem persists, contact [Technical Support](#).

**Problem:** *There was a problem installing the license for this serial number. Reason: A valid Host ID could not be found.*

**Solution:** Host ID information for your system can be found through the **Manage Licenses** dialog box in the CCES IDE via **Help > Manage Licenses > Report** or **Help > Email Support**.

Licenses locked to an Ethernet (MAC) address require a physical TCP/IP network address to be available on the computer. This error can occur if there is no network card installed.

Licenses locked to a disk serial number require a valid volume serial number. This error can occur if there is no C: drive installed, for example.

Corporate domain licenses require that the computer be on a domain. Refer to [Determining Your Corporate Domain](#) for more information.

**Problem:** *There was a problem installing a license for this serial number. Reason: The serial number has already been used and can be installed only once.*

**Solution:** The serial number you are trying to install has been installed already on this computer. For further information, refer to [Licensing Terminology](#).

**Problem:** *There was a problem activating the license. Reason: There was an error during activation. This may be due to the following:*

- *network outage*
- *firewall blocking access to the ADI activation server*
- *maintenance of the ADI activation server*

**Solution:** This can occur during one-step activation. First, open a Web browser and confirm that you can open the <http://www.analog.com> URL without any network or firewall problems. Then try activating the license again in the **New License Wizard**. If you were on the last page of one-step licensing activation when you closed the error dialog box, just click **Finish** again to complete activation.

If you still are unable to activate the license through one-step activation, on the **Select license activation method** page of the **New License Wizard**, select the **Install a temporary license and then register it via website** option. Follow the **License Registration Instructions** to register and validate your license.

**Problem:** *There was a problem registering the license. Reason: The license has already been registered the maximum number of allowed times. Details: Registration limit exceeded.*

**Solution:** Full and evaluation licenses can be activated a limited number of times. Contact [Technical Support](#) with your current serial number, and we will help to activate your current license or issue a replacement license, depending on the circumstances.

**Problem:** *The license was successfully installed, but there was a problem completing on-line validation. You can register and validate your license manually by selecting Help > Manage Licenses.*

**Solution:** The **Manage Licenses** dialog box lists the installed licenses. See [License Activation Methods](#) for more information.

**Problem:** *The license file was successfully installed, but there was a problem opening the registration Web site.*

**Solution:** This can occur due to a browser problem, for example. The **Manage Licenses** dialog box lists the installed licenses. See [License Activation Methods](#) for more information.

**Problem:** *There was a problem validating the license. Reason: The validation code is invalid. Please re-enter the code, ensuring that you type the code EXACTLY as you received it. It might be helpful to copy-and-paste your validation code rather than typing it manually.*

**Solution:** CCES detected that you entered an invalid validation code. Ensure that you have entered the correct validation code exactly as given.

Validation codes are valid for a particular combination of serial number and host ID. If you are trying to install your serial number on a different computer than the one you initially registered, you need a new validation code. Refer to [License Types](#) for details.

## Installation Warning Messages

This section describes common warning messages issued during license installation and validation. These messages display in message boxes, dialog boxes, the **Console** view, and the command prompt.

**Warning** (in message boxes): *<serial number> expires in x days*