


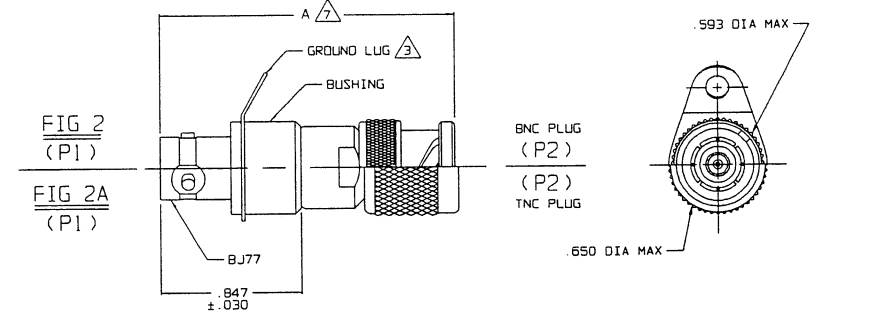
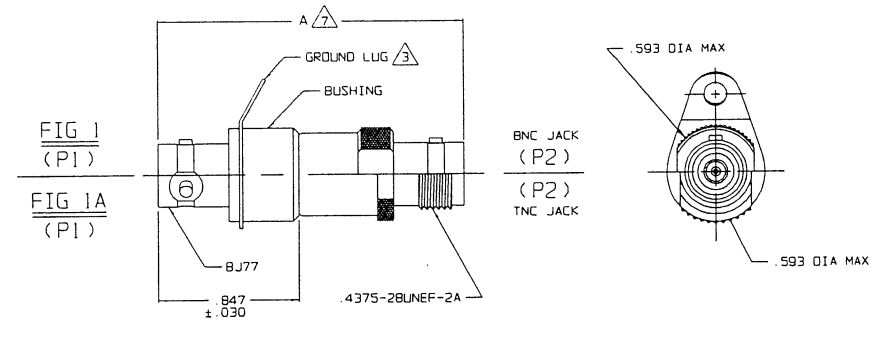
TABLE 1

P2 CONN TYPE	AREF DIM 	FIG NO	PI CONN TYPE																																					
			BJ77 /A										BJ77TL										BJ77FL																	
			SCHEMATICS																																					
			E1						E2						E3						E4						E5						E6							
			DASH NO																																					
CJ20	1.844	1	-1	-4	-7	-19	-25	-181	-41	-49	-57	-65	-73	-196	-81	-89	-97	-105	-113	-211	-121	-129	-137	-145	-153	-226														
UCJ20			-U1	-U4	-U7	-U19	-U25	-182	-U41	-U49	-U57	-U65	-U73	-197	-U81	-U89	-U97	-U105	-U113	-U212	-U121	-U129	-U137	-U145	-U153	-227														
PL20			-2	-5	-8	-20	-26	-183	-265	-42	-50	-58	-66	-74	-198	-82	-90	-98	-106	-114	-213	-122	-130	-138	-146	-154	-228	-241	-243	-245	-247	-249	-251	-253	-255	-257	-259	-261	-263	
UPL20	1.778	2	-U2	-U5	-U8	-U20	-U26	-184	-U42	-U50	-U58	-U66	-U74	-199	-U82	-U90	-U98	-U106	-U114	-U214	-U122	-U130	-U138	-U146	-U154	-229	-242	-244	-246	-248	-250	-252	-254	-256	-258	-260	-262	-264		
BJ29	1.847	3	-3	-6	-9	-21	-27	-185	-43	-51	-59	-67	-75	-200	-83	-91	-99	-107	-115	-215	-123	-131	-139	-147	-155	-230														
UBJ29			-U3	-U6	-U9	-U21	-U27	-186	-U43	-U51	-U59	-U67	-U75	-201	-U83	-U91	-U99	-U107	-U115	-U216	-U123	-U131	-U139	-U147	-U155	-231														
CJ40	1.844	1A	-10	-13	-16	-22	-28	-187	-44	-52	-60	-68	-76	-202	-84	-92	-100	-108	-116	-217	-124	-132	-140	-148	-156	-232														
UCJ40			-U10	-U13	-U16	-U22	-U28	-188	-U44	-U52	-U60	-U68	-U76	-203	-U84	-U92	-U100	-U108	-U116	-U218	-U124	-U132	-U140	-U148	-U156	-233														
PL40	1.778	2A	-11	-14	-17	-23	-29	-189	-45	-53	-61	-69	-77	-204	-85	-93	-101	-109	-117	-219	-125	-133	-141	-149	-157	-234														
UPL40			-U11	-U14	-U17	-U23	-U29	-190	-U45	-U53	-U61	-U69	-U77	-205	-U85	-U93	-U101	-U109	-U117	-U220	-U125	-U133	-U141	-U149	-U157	-235														
BJ49	1.847	3A	-12	-15	-18	-24	-30	-191	-46	-54	-62	-70	-78	-206	-86	-94	-102	-110	-118	-221	-126	-134	-142	-150	-158	-236														
UBJ49			-U12	-U15	-U18	-U24	-U30	-192	-U46	-U54	-U62	-U70	-U78	-207	-U86	-U94	-U102	-U110	-U118	-U222	-U126	-U134	-U142	-U150	-U158	-237														
PL40P	1.778	2A	-31	-32	-33	-34	-35	-193	-47	-55	-63	-71	-79	-208	-87	-95	-103	-111	-119	-223	-127	-135	-143	-151	-159	-238														
FL123	1.646	4	-36	-37	-38	-39	-40	-194	-48	-56	-64	-72	-80	-209	-88	-96	-104	-112	-120	-224	-128	-136	-144	-152	-160	-239														
UPL123			-161	-162	-163	-164	-165	-195	-166	-167	-168	-169	-170	-210	-171	-172	-173	-174	-175	-225	-176	-177	-178	-179	-180	-240														

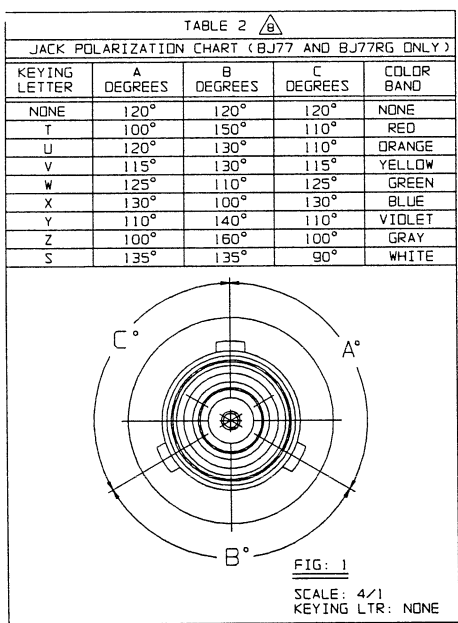
SEE 22-09


DATA CONTAINED IN THIS DOCUMENT IS PROPRIETARY TO TROMPETER ELECTRONICS INC. AND SHALL NOT BE DISCLOSED, COPIED OR USED FOR PROCUREMENT OR MANUFACTURE WITHOUT EXPRESS WRITTEN PERMISSION OF TROMPETER ELECTRONICS INC.


REVISONS		22-01	SH 1
REV	DESCRIPTION	DATE	APPROVED
K	REVISED PER ECO 15124	7/23/03	[Signature]
L	ECO 55773	7/28/15	CM



RED INDICATES ORIGINAL

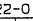





 POLARIZATION OPTIONAL ONLY ON BJ77 AND BJ77RG. SEE TABLE 2

 ADD .020 TO "A" DIM FOR ADAPTERS WITH "G" PREFIX

6. EXAMPLE OF COMPLETE PART NO:


22-01-G 1 - X

PART NO  POLARIZATION LETTER CODE

 DASH NO  OMIT FOR NONE 

5. EXAMPLE OF COMPLETE MODEL NO:

AD - BJ77 RG X - E1 - U CJ20


ADAPTER  (P1) CONN TYPE

RG = REVERSE GENDER; OMIT FOR NORMAL GENDER

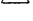
(P2) CONN TYPE, (U INDICATES 75 OHM)

U = 75 OHM; OMIT FOR 50 OHM

SCHEMATIC

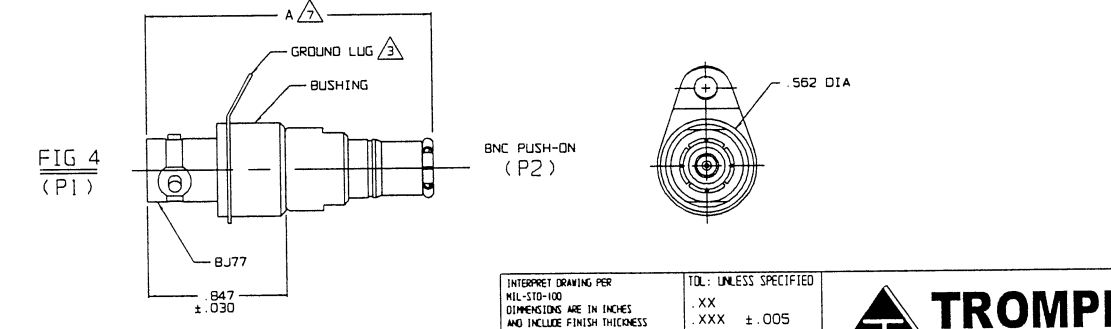
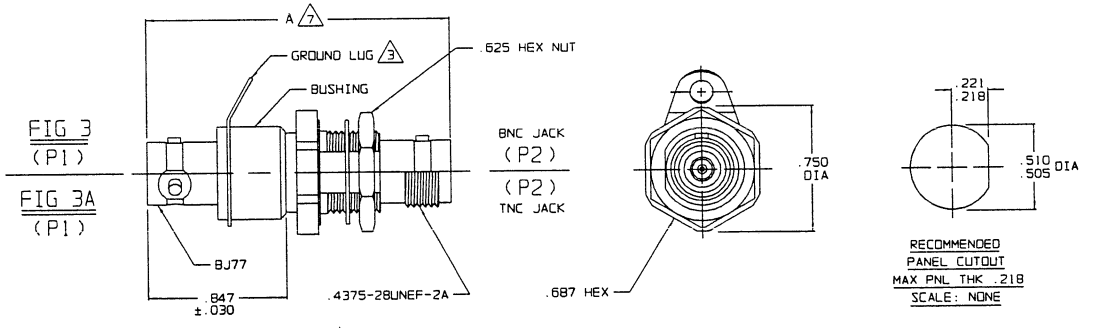
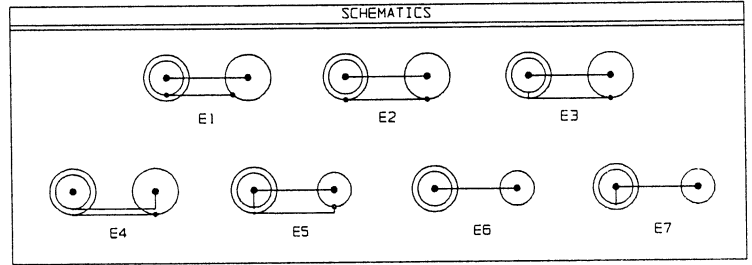
POLARIZATION LETTER CODE  IF REQ'D SEE TABLE 2


4. BETWEEN SERIES ADAPTERS: 2-LUG, 3-LUG, 4-LUG AND THREADED CONCENTRIC TWINAX/TRIAX BNC TYPE TO COAXIAL 50 & 75 OHM BNC/TNC & PUSH-ON PLUG/JACK

 FOR OPTIONAL GROUND LUG ADD PREFIX "G" TO DASH NO

2. FINISH TFS-1A (NICKEL)

1. ALL DIM ARE IN INCHES



INTERPRET DRAWING PER MIL-STD-100 DIMENSIONS ARE IN INCHES AND INCLUDE FINISH THICKNESS UNLESS OTHERWISE SPECIFIED		TOL: UNLESS SPECIFIED .XX .XXX ±.005 .XXXX ANGLES		 <b>TROMPETER</b> ELECTRONICS, INC.
DATE: 7-22-03	CHECKED: [Signature]	QUALITY: [Signature]	TITLE: ADAPTER: BJ77, BJ77RG/B BJ77TL, BJ77FL, BJ377 TO BNC/TNC SERIES	
DRAWN: AAH	DATE: 7-22-03	MATERIAL:	SIZE: B 14949	DRAWING NO.: 22-01
APPROVED: [Signature]	DATE: 7/23/03	FINISH:	SCALE: NONE	DATE: 2-25-85
HANDL: [Signature]	DATE: 7/23/03	DO NOT SCALE DWG	SHEET: 1C	REV: L
CAD FILE NO: 22-01K	NEXT ASSY			