

Surface Mount Frequency Mixer

ADE-13+

Level 7 (LO Power +7 dBm) 50 to 1600 MHz



CASE STYLE: CD541

Maximum Ratings

Operating Temperature	-40°C to 85°C
Storage Temperature	-55°C to 100°C
RF Power	50mW
IF Current	40mA

Pin Connections

LO	6
RF	3
IF	4
GROUND	1,2,5

Features

- low conversion loss, 8.1 dB typ.
- excellent L-R isolation, 40 dB typ.
- low profile package
- aqueous washable
- protected by U.S. Patent 6,133,525

Applications

- satellite distribution
- GPS

+RoHS Compliant

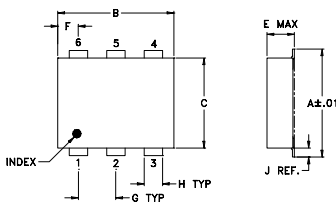
The +Suffix identifies RoHS Compliance. See our web site for RoHS Compliance methodologies and qualifications



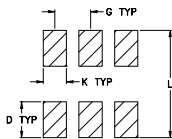
Available Tape and Reel at no extra cost

Reel Size	Devices/Reel
7"	20, 50, 100, 200, 500
13"	500, 1000

Outline Drawing



PCB Land Pattern

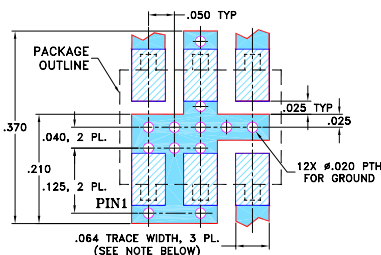


Suggested Layout. Tolerance to be within ±.002

Outline Dimensions (inch/mm)

A	B	C	D	E	F	G
.272	.310	.220	.100	.082	.055	.100
6.91	7.87	5.59	2.54	2.08	1.40	2.54
H	J	K	L	wt		
.030	.026	.065	.300	grams		
0.76	0.66	1.65	7.62	0.15		

Demo Board MCL P/N: TB-02
Suggested PCB Layout (PL-051)



- NOTES: 1. TRACE WIDTH IS SHOWN FOR ROGERS RO4350B WITH DIELECTRIC THICKNESS .030" ± .002"; COPPER: 1/2 OZ. EACH SIDE. FOR OTHER MATERIALS TRACE WIDTH MAY NEED TO BE MODIFIED.
2. BOTTOM SIDE OF THE PCB IS CONTINUOUS GROUND PLANE.

- DENOTES PCB COPPER LAYOUT WITH SMOBC (SOLDER MASK OVER BARE COPPER)
- DENOTES COPPER LAND PATTERN FREE OF SOLDER MASK

Notes

- A. Performance and quality attributes and conditions not expressly stated in this specification document are intended to be excluded and do not form a part of this specification document.
B. Electrical specifications and performance data contained in this specification document are based on Mini-Circuit's applicable established test performance criteria and measurement instructions.
C. The parts covered by this specification document are subject to Mini-Circuit's standard limited warranty and terms and conditions (collectively, "Standard Terms"); Purchasers of this part are entitled to the rights and benefits contained therein. For a full statement of the Standard Terms and the exclusive rights and remedies thereunder, please visit Mini-Circuit's website at www.minicircuits.com/MCLStore/terms.jsp

Electrical Specifications

FREQUENCY (MHz)	CONVERSION LOSS (dB)	LO-RF ISOLATION (dB)			LO-IF ISOLATION (dB)			IP3 at center band (dBm)										
		L	M	U	L	M	U											
LO/RF f_L - f_U	Mid-Band m \bar{X} σ Max.	Typ.	Min.	Typ.	Min.	Typ.	Min.	Typ.										
50-1600	50-1000	8.1	0.10	9.0	9.8	50	25	40	25	33	20	49	30	35	20	32	20	11

1 dB COMP.: +1 dBm typ.

L = low range [f_L to 10 f_L]
m = mid band [$2f_L$ to $f_U/2$]

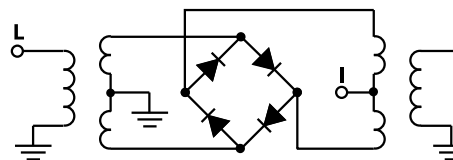
M = mid range [10 f_L to $f_U/2$]

U = upper range [$f_U/2$ to f_U]

Typical Performance Data

Frequency (MHz)		Conversion Loss (dB)	Isolation L-R (dB)	Isolation L-I (dB)	VSWR RF Port (:1)	VSWR LO Port (:1)
RF	LO	LO +7dBm	LO +7dBm	LO +7dBm	LO +7dBm	LO +7dBm
50.00	80.00	7.46	55.80	52.20	1.07	2.68
100.00	130.00	7.58	52.00	47.90	1.05	2.72
160.71	190.71	7.51	49.30	44.30	1.01	2.61
271.43	301.43	7.74	45.70	40.50	1.13	2.58
300.00	330.00	7.76	45.00	39.70	1.17	2.72
382.14	412.14	7.69	43.20	38.00	1.31	2.65
492.86	522.86	7.86	40.40	36.20	1.49	2.61
500.00	530.00	7.92	40.40	36.10	1.50	2.61
603.57	633.57	8.06	37.80	35.40	1.71	2.46
714.29	744.29	8.16	36.20	34.40	1.81	2.35
825.00	855.00	7.91	35.30	33.50	1.69	2.52
935.71	965.71	7.87	32.30	33.20	1.64	2.72
1000.00	1030.00	7.75	31.00	33.40	1.63	2.80
1046.43	1076.43	7.87	30.60	33.60	1.61	2.80
1157.14	1187.14	8.02	30.00	33.20	1.48	3.01
1267.86	1297.86	8.09	30.60	32.80	1.30	3.26
1300.00	1330.00	8.17	31.50	32.30	1.27	3.32
1378.57	1408.57	8.24	31.60	31.90	1.27	3.57
1489.29	1519.29	8.30	28.10	31.10	1.42	4.22
1600.00	1630.00	8.40	27.60	30.80	1.56	5.33

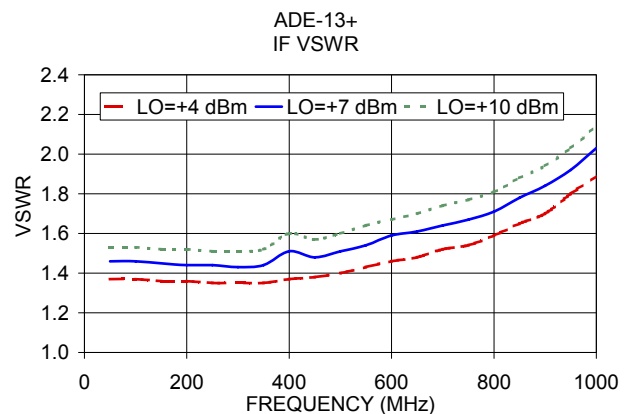
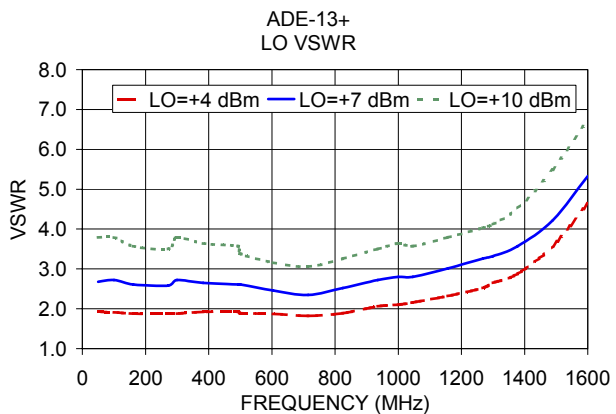
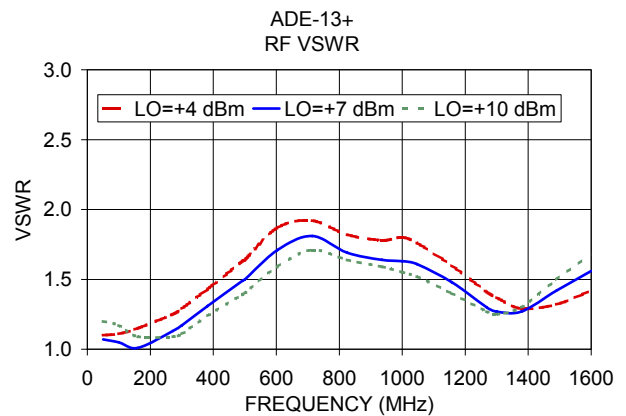
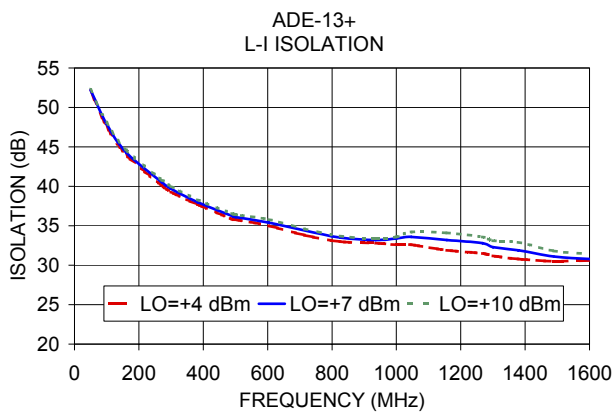
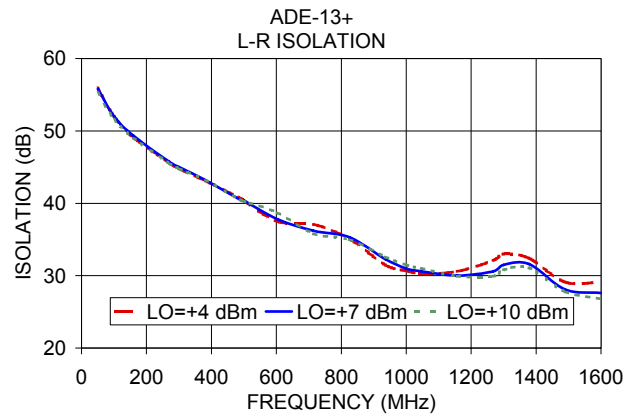
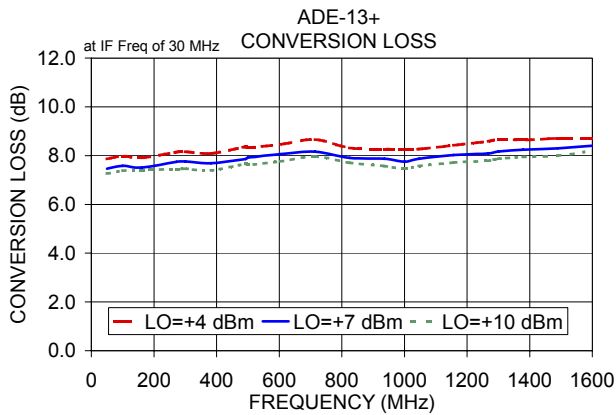
Electrical Schematic



Mini-Circuits

www.minicircuits.com P.O. Box 350166, Brooklyn, NY 11235-0003 (718) 934-4500 sales@minicircuits.com

REV. G
M158496
ADE-13+
ED-6103/1
DJ/TD/CP/AM
161021
Page 1 of 2



Notes

- A. Performance and quality attributes and conditions not expressly stated in this specification document are intended to be excluded and do not form a part of this specification document.
- B. Electrical specifications and performance data contained in this specification document are based on Mini-Circuit's applicable established test performance criteria and measurement instructions.
- C. The parts covered by this specification document are subject to Mini-Circuit's standard limited warranty and terms and conditions (collectively, "Standard Terms"); Purchasers of this part are entitled to the rights and benefits contained therein. For a full statement of the Standard Terms and the exclusive rights and remedies thereunder, please visit Mini-Circuit's website at www.minicircuits.com/MCLStore/terms.jsp

