



FEATURES

- SPI interface with error detection
- Includes CRC, invalid read/write address, and SCLK count error detection
- Supports burst mode and daisy-chain mode
- Industry standard SPI Mode 0 and SPI Mode 3 interface compatible
- Round robin mode allows switching times that are comparable with a parallel interface
- Four general-purpose digital outputs that can be used to control other devices
- <1 pC charge injection over full signal range
- 1 pF off capacitance
- V_{SS} to V_{DD} analog signal range
- Fully specified at $\pm 15\text{ V}$ and $+12\text{ V}$
- 1.8 V logic compatibility with $2.7\text{ V} \leq V_L \leq 3.3\text{ V}$
- 24-lead LFCSP package

APPLICATIONS

- Audio and video routing
- Automatic test equipment
- Data acquisition systems
- Battery-powered systems
- Sample-and-hold systems
- Communication systems

GENERAL DESCRIPTION

The ADGS1208/ADGS1209 are analog multiplexers comprising eight single channels and four differential channels, respectively. A serial peripheral interface (SPI) controls the switches. The SPI interface has robust error detection features, such as cyclic redundancy check (CRC) error detection, invalid read/write address detection, and SCLK count error detection.

It is possible to daisy-chain multiple ADGS1208/ADGS1209 devices together. Daisy-chain mode enables the configuration of multiple devices with a minimal amount of digital lines. The ADGS1208/ADGS1209 can also operate in burst mode to decrease the time between SPI commands.

iCMOS[®] construction ensures ultralow power dissipation, making the devices ideally suited for portable and battery-powered instruments.

Each switch conducts equally well in both directions when on, and each switch has an input signal range that extends to the supplies. In the off condition, signal levels up to the supplies are blocked.

Rev. 0

[Document Feedback](#)

Information furnished by Analog Devices is believed to be accurate and reliable. However, no responsibility is assumed by Analog Devices for its use, nor for any infringements of patents or other rights of third parties that may result from its use. Specifications subject to change without notice. No license is granted by implication or otherwise under any patent or patent rights of Analog Devices. Trademarks and registered trademarks are the property of their respective owners.

FUNCTIONAL BLOCK DIAGRAMS

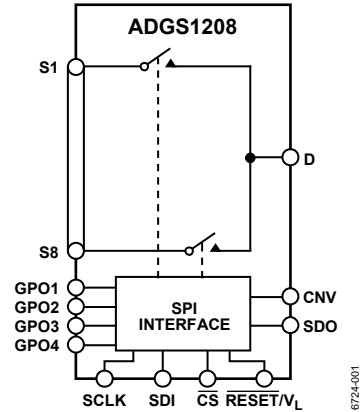


Figure 1. ADGS1208 Functional Block Diagram

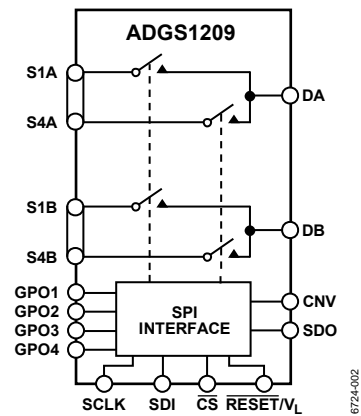


Figure 2. ADGS1209 Functional Block Diagram

The ultralow on capacitance (C_{ON}) and exceptionally low charge injection (Q_{INJ}) of these multiplexers make them ideal solutions for data acquisition and sample-and-hold applications, where low glitch and fast settling are required.

PRODUCT HIGHLIGHTS

- SPI interface removes the need for parallel conversion, logic traces, and reduces GPIO channel count.
- Daisy-chain mode removes additional logic traces when multiple devices are used.
- CRC error detection, invalid read/write address detection, and SCLK count error detection ensure a robust digital interface.
- CRC and error detection capabilities allow the use of the ADGS1208/ADGS1209 in safety critical systems.

TABLE OF CONTENTS

| | | | |
|--|----|---|----|
| Features | 1 | Software Reset..... | 23 |
| Applications..... | 1 | Daisy-Chain Mode..... | 23 |
| General Description | 1 | Power-On Reset..... | 24 |
| Functional Block Diagrams..... | 1 | Round Robin Mode..... | 25 |
| Product Highlights | 1 | General-Purpose Outputs | 26 |
| Revision History | 2 | Applications Information | 27 |
| Specifications..... | 3 | Digital Input Buffers | 27 |
| ±15 V Dual Supply | 3 | Settling Time..... | 27 |
| 12 V Single Supply..... | 5 | Power Supply Rails..... | 27 |
| Continuous Current per Channel, Sx or Dx..... | 8 | Power Supply Recommendations..... | 27 |
| Timing Characteristics | 9 | Register Summaries..... | 28 |
| Absolute Maximum Ratings..... | 11 | Register Details | 29 |
| Thermal Resistance | 11 | Switch Data Register | 29 |
| ESD Caution..... | 11 | Error Configuration Register..... | 30 |
| Pin Configurations and Function Descriptions | 12 | Error Flags Register..... | 30 |
| Typical Performance Characteristics | 14 | Burst Enable Register..... | 31 |
| Test Circuits..... | 18 | Round Robin Enable Register..... | 31 |
| Terminology | 21 | Round Robin Channel Configuration Register..... | 31 |
| Theory of Operation | 22 | CNV Edge Select Register | 32 |
| Address Mode | 22 | Software Reset Register | 32 |
| Error Detection Features | 22 | Outline Dimensions | 33 |
| Clearing the Error Flags Register | 23 | Ordering Guide | 33 |
| Burst Mode..... | 23 | | |

REVISION HISTORY

4/2018—Revision 0: Initial Version

SPECIFICATIONS

±15 V DUAL SUPPLY

$V_{DD} = 15\text{ V} \pm 10\%$, $V_{SS} = -15\text{ V} \pm 10\%$, $V_L = 2.7\text{ V}$ to 5.5 V , and $GND = 0\text{ V}$, unless otherwise noted.

Table 1.

| Parameter | +25°C | -40°C to +85°C | -40°C to +125°C | Unit | Test Conditions/Comments |
|---|-------------|----------------|----------------------|-------------------|--|
| ANALOG SWITCH | | | | | |
| Analog Signal Range | | | V_{DD} to V_{SS} | V | |
| On Resistance, R_{ON} | 150 | | | Ω typ | $V_S = \pm 10\text{ V}$, $I_S = -1\text{ mA}$, see Figure 39 |
| | 200 | 240 | 270 | Ω max | $V_{DD} = +13.5\text{ V}$, $V_{SS} = -13.5\text{ V}$ |
| On Resistance Match Between Channels, ΔR_{ON} | 3.5 | | | Ω typ | $V_S = \pm 10\text{ V}$, $I_S = -1\text{ mA}$ |
| | 6 | 10 | 12 | Ω max | |
| On Resistance Flatness, $R_{FLAT(ON)}$ | 35 | | | Ω typ | $V_S = \pm 10\text{ V}$, $I_S = -1\text{ mA}$ |
| | 64 | 76 | 83 | Ω max | |
| LEAKAGE CURRENTS | | | | | |
| Source Off Leakage, I_S (Off) | ± 0.003 | | | nA typ | $V_{DD} = +16.5\text{ V}$, $V_{SS} = -16.5\text{ V}$ $V_S = \pm 10\text{ V}$, $V_D = \mp 10\text{ V}$, see Figure 36 |
| | ± 0.1 | ± 0.6 | ± 1.0 | nA max | |
| Drain Off Leakage, I_D (Off) | ± 0.003 | | | nA typ | $V_S = \pm 10\text{ V}$, $V_D = \mp 10\text{ V}$, see Figure 36 |
| | ± 0.1 | ± 0.6 | ± 1.0 | nA max | |
| Channel On Leakage, I_D (On), I_S (On) | ± 0.02 | | | nA typ | $V_S = V_D = \pm 10\text{ V}$, see Figure 32 |
| | ± 0.3 | ± 0.6 | ± 1.0 | nA max | |
| DIGITAL OUTPUTS | | | | | |
| SDO | | | | | |
| Output Voltage Low, V_{OL} | | | 0.4 | V max | Sink current (I_{SINK}) = 5 mA |
| | | | 0.2 | V max | $I_{SINK} = 1\text{ mA}$ |
| High Impedance Leakage Current | 0.001 | | | μA typ | Output voltage (V_{OUT}) = V_{GND} or V_L |
| | | | ± 0.1 | μA max | |
| High Impedance Output Capacitance | 4 | | | pF typ | |
| GPOx | | | | | |
| Output Voltage High, V_{OH} | | | $V_L - 0.2\text{ V}$ | V min | $I_{SOURCE} = 100\text{ }\mu\text{A}$ |
| Low, V_{OL} | | | 0.2 | V max | $I_{SINK} = 100\text{ }\mu\text{A}$ |
| Timing | | | | | |
| t_{ON} | 95 | | | ns typ | $C_L = 15\text{ pF}$, see Figure 44 |
| | 115 | 115 | 115 | ns max | |
| t_{OFF} | 15 | | | ns typ | $C_L = 15\text{ pF}$, see Figure 44 |
| | 20 | 25 | 25 | ns max | |
| Break-Before-Make Time Delay, t_D | 50 | | | ns typ | $C_L = 15\text{ pF}$, see Figure 45 |
| | | | 35 | ns min | |

| Parameter | +25°C | -40°C to +85°C | -40°C to +125°C | Unit | Test Conditions/Comments |
|--|-------|----------------|-----------------|-------------------|---|
| DIGITAL INPUTS/OUTPUTS | | | | | |
| Input Voltage | | | | | |
| High, V_{INH} | | | 2 | V min | $3.3\text{ V} < V_L \leq 5.5\text{ V}$ |
| | | | 1.35 | V min | $2.7\text{ V} \leq V_L \leq 3.3\text{ V}$ |
| Low, V_{INL} | | | 0.8 | V max | $3.3\text{ V} < V_L \leq 5.5\text{ V}$ |
| | | | 0.8 | V max | $2.7\text{ V} \leq V_L \leq 3.3\text{ V}$ |
| Input Current, I_{INL} or I_{INH} | 0.001 | | | μA typ | Input voltage (V_{IN}) = V_{GND} or V_L |
| | | | ± 0.1 | μA max | |
| Digital Input Capacitance, C_{IN} | 4 | | | pF typ | |
| DYNAMIC CHARACTERISTICS¹ | | | | | |
| Transition Time, $t_{TRANSITION}$ | 90 | | | ns typ | $R_L = 300\ \Omega$, $C_L = 35\text{ pF}$ |
| | 145 | 170 | 195 | ns max | $V_S = 10\text{ V}$, see Figure 41 |
| t_{ON} (EN) | 92 | | | ns typ | $R_L = 300\ \Omega$, $C_L = 35\text{ pF}$ |
| | 110 | 140 | 155 | ns max | $V_S = 10\text{ V}$, see Figure 42 |
| t_{OFF} (EN) | 120 | | | ns typ | $R_L = 300\ \Omega$, $C_L = 35\text{ pF}$ |
| | 135 | 170 | 190 | ns max | $V_S = 10\text{ V}$, see Figure 42 |
| Break-Before-Make Time Delay, t_D | 32 | | | ns typ | $R_L = 300\ \Omega$, $C_L = 35\text{ pF}$ |
| | | | 7 | ns min | $V_{S1} = V_{S2} = 10\text{ V}$, see Figure 40 |
| Charge Injection, Q_{INJ} | 0.4 | | | pC typ | $V_S = 0\text{ V}$, $R_S = 0\ \Omega$, $C_L = 1\text{ nF}$, see Figure 43 |
| Off Isolation | -85 | | | dB typ | $R_L = 50\ \Omega$, $C_L = 5\text{ pF}$, $f = 1\text{ MHz}$, see Figure 34 |
| Channel to Channel Crosstalk | -85 | | | dB typ | $R_L = 50\ \Omega$, $C_L = 5\text{ pF}$, $f = 1\text{ MHz}$, see Figure 33 |
| Total Harmonic Distortion Plus Noise | 0.15 | | | % typ | $R_L = 110\ \Omega$, 15 V p-p , $f = 20\text{ Hz}$ to 20 kHz , see Figure 38 |
| -3 dB Bandwidth | | | | | $R_L = 50\ \Omega$, $C_L = 5\text{ pF}$, see Figure 37 |
| ADGS1208 | 550 | | | MHz typ | |
| ADGS1209 | 630 | | | MHz typ | |
| Insertion Loss | -6 | | | dB typ | $R_L = 50\ \Omega$, $C_L = 5\text{ pF}$, $f = 1\text{ MHz}$, see Figure 37 |
| C_S (Off) | 1 | | | pF typ | $V_S = 0\text{ V}$, $f = 1\text{ MHz}$ |
| | 1.6 | | | pF max | $V_S = 0\text{ V}$, $f = 1\text{ MHz}$ |
| C_D (Off) | | | | | |
| ADGS1208 | 5 | | | pF typ | $V_S = 0\text{ V}$, $f = 1\text{ MHz}$ |
| | 5.5 | | | pF max | $V_S = 0\text{ V}$, $f = 1\text{ MHz}$ |
| ADGS1209 | 2 | | | pF typ | $V_S = 0\text{ V}$, $f = 1\text{ MHz}$ |
| | 3.5 | | | pF max | $V_S = 0\text{ V}$, $f = 1\text{ MHz}$ |
| C_D (On), C_S (On) | | | | | |
| ADGS1208 | 5 | | | pF typ | $V_S = 0\text{ V}$, $f = 1\text{ MHz}$ |
| | 6.5 | | | pF max | $V_S = 0\text{ V}$, $f = 1\text{ MHz}$ |
| ADGS1209 | 3 | | | pF typ | $V_S = 0\text{ V}$, $f = 1\text{ MHz}$ |
| | 4.5 | | | pF max | $V_S = 0\text{ V}$, $f = 1\text{ MHz}$ |

| Parameter | +25°C | -40°C to +85°C | -40°C to +125°C | Unit | Test Conditions/Comments |
|---------------------------|-------|----------------|-----------------|--|---|
| POWER REQUIREMENTS | | | | | |
| I_{DD} | 0.002 | | 1.0 | $\mu\text{A typ}$ $\mu\text{A max}$ | $V_{DD} = +16.5\text{ V}$, $V_{SS} = -16.5\text{ V}$ All switches open |
| | 220 | | 380 | $\mu\text{A typ}$ $\mu\text{A max}$ | All switches closed, $V_L = 5.5\text{ V}$ |
| I_L | 270 | | 440 | $\mu\text{A typ}$ $\mu\text{A max}$ | All switches closed, $V_L = 2.7\text{ V}$ |
| | 6.3 | | 8.0 | $\mu\text{A typ}$ $\mu\text{A max}$ | Digital inputs = 0 V or V_L |
| Inactive | 14 | | | $\mu\text{A typ}$ | $\overline{CS} = V_L$ and $SDI = 0\text{ V}$ or V_L , $V_L = 5\text{ V}$ |
| Inactive, SCLK = 1 MHz | 7 | | | $\mu\text{A typ}$ | $\overline{CS} = V_L$ and $SDI = 0\text{ V}$ or V_L , $V_L = 3\text{ V}$ |
| SCLK = 50 MHz | 390 | | | $\mu\text{A typ}$ | $\overline{CS} = V_L$ and $SDI = 0\text{ V}$ or V_L , $V_L = 5\text{ V}$ |
| | 210 | | | $\mu\text{A typ}$ | $\overline{CS} = V_L$ and $SDI = 0\text{ V}$ or V_L , $V_L = 3\text{ V}$ |
| Inactive, SDI = 1 MHz | 15 | | | $\mu\text{A typ}$ | \overline{CS} and SCLK = 0 V or V_L , $V_L = 5\text{ V}$ |
| | 7.5 | | | $\mu\text{A typ}$ | \overline{CS} and SCLK = 0 V or V_L , $V_L = 3\text{ V}$ |
| SDI = 25 MHz | 230 | | | $\mu\text{A typ}$ | \overline{CS} and SCLK = 0 V or V_L , $V_L = 5\text{ V}$ |
| | 120 | | | $\mu\text{A typ}$ | \overline{CS} and SCLK = 0 V or V_L , $V_L = 3\text{ V}$ |
| Active at 50 MHz | 1.8 | | | mA typ | Digital inputs toggle between 0 V and V_L , $V_L = 5.5\text{ V}$ |
| | 0.7 | | 2.1 | mA max mA typ | Digital inputs toggle between 0 V and V_L , $V_L = 2.7\text{ V}$ |
| I_{SS} | 0.002 | | 1.0 | mA max $\mu\text{A typ}$ | Digital inputs = 0 V or V_L |
| | | | 1.0 | $\mu\text{A max}$ | |
| V_{DD}/V_{SS} | | | ± 4.5 | V min | GND = 0 V |
| | | | ± 16.5 | V max | GND = 0 V |

¹ Guaranteed by design; not subject to production test.

12 V SINGLE SUPPLY

$V_{DD} = 12\text{ V} \pm 10\%$, $V_{SS} = 0\text{ V}$, $V_L = 2.7\text{ V}$ to 5.5 V, and GND = 0 V, unless otherwise noted.

Table 2.

| Parameter | +25°C | -40°C to +85°C | -40°C to +125°C | Unit | Test Conditions/Comments |
|--|-------|----------------|-----------------|--------------|---|
| ANALOG SWITCH | | | | | |
| Analog Signal Range | | | 0 V to V_{DD} | V | |
| On Resistance, R_{ON} | 380 | | | Ω typ | $V_S = 0\text{ V}$ to 10 V, $I_S = -1\text{ mA}$, see Figure 39 |
| On Resistance Match Between Channels, ΔR_{ON} | 475 | 570 | 625 | Ω max | $V_{DD} = 10.8\text{ V}$, $V_{SS} = 0\text{ V}$ |
| | 5 | | | Ω typ | $V_S = 0\text{ V}$ to 10 V, $I_S = -1\text{ mA}$ |
| On Resistance Flatness, $R_{FLAT(ON)}$ | 16 | 26 | 27 | Ω max | |
| | 200 | | | Ω typ | $V_S = 0\text{ V}$ to 10 V, $I_S = -1\text{ mA}$ |

| Parameter | +25°C | -40°C to +85°C | -40°C to +125°C | Unit | Test Conditions/Comments |
|---|----------------|----------------|-----------------------------|------------------|--|
| LEAKAGE CURRENTS | | | | | |
| Source Off Leakage, I_S (Off) | ±0.003 | | | nA typ | $V_{DD} = 13.2\text{ V}$, $V_{SS} = 0\text{ V}$ $V_S = 1\text{ V}/10\text{ V}$, $V_D = 10\text{ V}/1\text{ V}$, see Figure 36 |
| Drain Off Leakage, I_D (Off) | ±0.1 ±0.003 | ±0.6 | ±1.0 | nA max nA typ | $V_S = 1\text{ V}/10\text{ V}$, $V_D = 10\text{ V}/1\text{ V}$, see Figure 36 |
| Channel On Leakage, I_D (On), I_S (On) | ±0.1 ±0.02 | ±0.6 | ±1.0 | nA max nA typ | $V_S = V_D = 1\text{ V}/10\text{ V}$, see Figure 32 |
| | ±0.3 | ±0.6 | ±1.0 | nA max | |
| DIGITAL OUTPUT | | | | | |
| Output Voltage Low, V_{OL} | | | 0.4 0.2 | V max V max | $I_{SINK} = 5\text{ mA}$ $I_{SINK} = 1\text{ mA}$ $V_{OUT} = V_{GND}$ or V_L |
| High Impedance Leakage Current | 0.001 | | ±0.1 | µA typ µA max | |
| High Impedance Output Capacitance | 4 | | | pF typ | |
| GPOx | | | | | |
| Output Voltage High, V_{OH} Low, V_{OL} | | | $V_L - 0.2\text{ V}$ 0.2 | V min V max | $I_{SOURCE} = 100\text{ µA}$ $I_{SINK} = 100\text{ µA}$ |
| Timing t_{ON} | 95 115 | 115 | 115 | ns typ ns max | $C_L = 15\text{ pF}$, see Figure 44 |
| t_{OFF} | 15 20 | 25 | 25 | ns typ ns max | $C_L = 15\text{ pF}$, see Figure 44 |
| Break-Before-Make Time Delay, t_D | 50 | | 35 | ns typ ns min | $C_L = 15\text{ pF}$, see Figure 45 |
| DIGITAL INPUTS | | | | | |
| Input Voltage High, V_{INH} | | | 2 1.35 | V min V min | $3.3\text{ V} < V_L \leq 5.5\text{ V}$ $2.7\text{ V} \leq V_L \leq 3.3\text{ V}$ |
| Low, V_{INL} | | | 0.8 0.8 | V max V max | $3.3\text{ V} < V_L \leq 5.5\text{ V}$ $2.7\text{ V} \leq V_L \leq 3.3\text{ V}$ |
| Input Current, I_{INL} or I_{INH} | 0.001 | | ±0.1 | µA typ µA max | $V_{IN} = V_{GND}$ or V_L |
| Digital Input Capacitance, C_{IN} | 4 | | | pF typ | |
| DYNAMIC CHARACTERISTIC¹ | | | | | |
| Transition Time, $t_{TRANSITION}$ | 110 185 | 220 | 245 | ns typ ns max | $R_L = 300\text{ }\Omega$, $C_L = 35\text{ pF}$ $V_S = 8\text{ V}$, see Figure 41 |
| t_{ON} (EN) | 120 140 | 190 | 210 | ns typ ns max | $R_L = 300\text{ }\Omega$, $C_L = 35\text{ pF}$ $V_S = 8\text{ V}$, see Figure 42 |
| t_{OFF} (EN) | 130 145 | 195 | 215 | ns typ ns max | $R_L = 300\text{ }\Omega$, $C_L = 35\text{ pF}$ $V_S = 8\text{ V}$, see Figure 42 |
| Break-Before-Make Time Delay, t_D | 35 | | 15 | ns typ ns min | $R_L = 300\text{ }\Omega$, $C_L = 35\text{ pF}$ $V_{S1} = V_{S2} = 8\text{ V}$, see Figure 40 |
| Charge Injection, Q_{INJ} | -0.2 | | | pC typ | $V_S = 6\text{ V}$, $R_S = 0\text{ }\Omega$, $C_L = 1\text{ nF}$, see Figure 43 |
| Off Isolation | -85 | | | dB typ | $R_L = 50\text{ }\Omega$, $C_L = 5\text{ pF}$, $f = 1\text{ MHz}$, see Figure 34 |
| Channel to Channel Crosstalk | -85 | | | dB typ | $R_L = 50\text{ }\Omega$, $C_L = 5\text{ pF}$, $f = 1\text{ MHz}$, see Figure 33 |

| Parameter | +25°C | -40°C to +85°C | -40°C to +125°C | Unit | Test Conditions/Comments |
|---------------------------|-------|----------------|-----------------|-------------------|--|
| -3 dB Bandwidth | | | | | $R_L = 50 \Omega$, $C_L = 5 \text{ pF}$, see Figure 37 |
| ADGS1208 | 450 | | | MHz typ | |
| ADGS1209 | 550 | | | MHz typ | |
| Insertion Loss | -12 | | | dB typ | $R_L = 50 \Omega$, $C_L = 5 \text{ pF}$, $f = 1 \text{ MHz}$, see Figure 37 |
| C_S (Off) | 1.2 | | | pF typ | $V_S = 0 \text{ V}$, $f = 1 \text{ MHz}$ |
| | 1.8 | | | pF max | $V_S = 0 \text{ V}$, $f = 1 \text{ MHz}$ |
| C_D (Off) | | | | | |
| ADGS1208 | 6 | | | pF typ | $V_S = 0 \text{ V}$, $f = 1 \text{ MHz}$ |
| | 6.5 | | | pF max | $V_S = 0 \text{ V}$, $f = 1 \text{ MHz}$ |
| ADGS1209 | 3.2 | | | pF typ | $V_S = 0 \text{ V}$, $f = 1 \text{ MHz}$ |
| | 4 | | | pF max | $V_S = 0 \text{ V}$, $f = 1 \text{ MHz}$ |
| C_D (On), C_S (On) | | | | | |
| ADGS1208 | 6 | | | pF typ | $V_S = 0 \text{ V}$, $f = 1 \text{ MHz}$ |
| | 7 | | | pF max | $V_S = 0 \text{ V}$, $f = 1 \text{ MHz}$ |
| ADGS1209 | 4 | | | pF typ | $V_S = 0 \text{ V}$, $f = 1 \text{ MHz}$ |
| | 4.5 | | | pF max | $V_S = 0 \text{ V}$, $f = 1 \text{ MHz}$ |
| POWER REQUIREMENTS | | | | | |
| I_{DD} | 0.002 | | | μA typ | $V_{DD} = 13.2 \text{ V}$ All switches open |
| | 220 | | 1.0 | μA max | |
| | | | 380 | μA typ | All switches closed, $V_L = 5.5 \text{ V}$ |
| | 270 | | 440 | μA max | |
| | | | | μA typ | All switches closed, $V_L = 2.7 \text{ V}$ |
| | | | | μA max | |
| I_L | | | | | |
| Inactive | 6.3 | | 8.0 | μA typ | Digital inputs = 0 V or V_L |
| | | | | μA max | |
| Inactive, SCLK = 1 MHz | 14 | | | μA typ | $\overline{CS} = V_L$ and SDI = 0 V or V_L , $V_L = 5 \text{ V}$ |
| | 7 | | | μA typ | $\overline{CS} = V_L$ and SDI = 0 V or V_L , $V_L = 3 \text{ V}$ |
| SCLK = 50 MHz | 390 | | | μA typ | $\overline{CS} = V_L$ and SDI = 0 V or V_L , $V_L = 5 \text{ V}$ |
| | 210 | | | μA typ | $\overline{CS} = V_L$ and SDI = 0 V or V_L , $V_L = 3 \text{ V}$ |
| Inactive, SDI = 1 MHz | 15 | | | μA typ | \overline{CS} and SCLK = 0 V or V_L , $V_L = 5 \text{ V}$ |
| | 7.5 | | | μA typ | \overline{CS} and SCLK = 0 V or V_L , $V_L = 3 \text{ V}$ |
| SDI = 25 MHz | 230 | | | μA typ | \overline{CS} and SCLK = 0 V or V_L , $V_L = 5 \text{ V}$ |
| | 120 | | | μA typ | \overline{CS} and SCLK = 0 V or V_L , $V_L = 3 \text{ V}$ |
| Active at 50 MHz | 1.8 | | | mA typ | Digital inputs toggle between 0 V and V_L , $V_L = 5.5 \text{ V}$ |
| | 0.7 | | 2.1 | mA max | |
| | | | | mA typ | Digital inputs toggle between 0 V and V_L , $V_L = 2.7 \text{ V}$ |
| V_{DD} | | | 1.0 | mA max | |
| | | | 5 | V min | $GND = 0 \text{ V}$, $V_{SS} = 0 \text{ V}$ |
| | | | 16.5 | V max | $GND = 0 \text{ V}$, $V_{SS} = 0 \text{ V}$ |

¹ Guaranteed by design; not subject to production test.

CONTINUOUS CURRENT PER CHANNEL, Sx OR Dx**Table 3. ADGS1208, One Channel On**

| Parameter | 25°C | 85°C | 125°C | Unit |
|---|------|------|-------|--------|
| CONTINUOUS CURRENT, Sx OR D ¹ | | | | |
| $V_{DD} = +15\text{ V}, V_{SS} = -15\text{ V}$ ($\theta_{JA} = 63.1^\circ\text{C/W}$) | 29.3 | 21.9 | 14.1 | mA max |
| $V_{DD} = 12\text{ V}, V_{SS} = 0\text{ V}$ ($\theta_{JA} = 63.1^\circ\text{C/W}$) | 37.7 | 27.3 | 19 | mA max |

¹ Sx refers to the S1 to S8 pins.

Table 4. ADGS1209, Two Channels On

| Parameter | 25°C | 85°C | 125°C | Unit |
|---|------|------|-------|--------|
| CONTINUOUS CURRENT, Sx OR Dx ¹ | | | | |
| $V_{DD} = +15\text{ V}, V_{SS} = -15\text{ V}$ ($\theta_{JA} = 63.1^\circ\text{C/W}$) | 21.8 | 16.1 | 9.9 | mA max |
| $V_{DD} = 12\text{ V}, V_{SS} = 0\text{ V}$ ($\theta_{JA} = 63.1^\circ\text{C/W}$) | 28.2 | 21.2 | 13.4 | mA max |

¹ Sx refers to the S1A to S4A and S1B to S4B pins, and Dx refers to the DA and DB pins.

TIMING CHARACTERISTICS

$V_L = 2.7\text{ V}$ to 5.5 V , $GND = 0\text{ V}$, and all specifications T_{MIN} to T_{MAX} , unless otherwise noted. Guaranteed by design and characterization, not production tested.

Table 5.

| Parameter | Limit | Unit | Test Conditions/Comments |
|------------------------|-------|--------|--|
| TIMING CHARACTERISTICS | | | |
| t_1 | 20 | ns min | SCLK or CNV period |
| t_2 | 8 | ns min | SCLK or CNV high pulse width |
| t_3 | 8 | ns min | SCLK or CNV low pulse width |
| t_4 | 10 | ns min | \overline{CS} falling edge to SCLK or CNV active edge |
| t_5 | 6 | ns min | Data setup time |
| t_6 | 8 | ns min | Data hold time |
| t_7 | 10 | ns min | SCLK or CNV active edge to \overline{CS} rising edge |
| t_8 | 20 | ns max | \overline{CS} falling edge to SDO data available |
| t_9^1 | 20 | ns max | SCLK falling edge to SDO data available |
| t_{10} | 20 | ns max | \overline{CS} rising edge to SDO returns to high impedance |
| t_{11} | 20 | ns min | \overline{CS} high time between SPI commands |
| t_{12} | 8 | ns min | \overline{CS} falling edge to SCLK or CNV edge rejection |
| t_{13} | 8 | ns min | \overline{CS} rising edge to SCLK or CNV edge rejection |

¹ Measured with the 1 k Ω pull-up resistor to V_L and 20 pF load. t_9 determines the maximum SCLK frequency when SDO is used.

Timing Diagrams

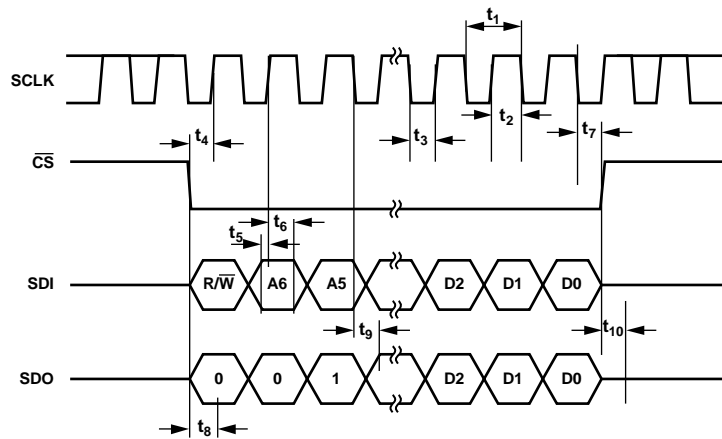
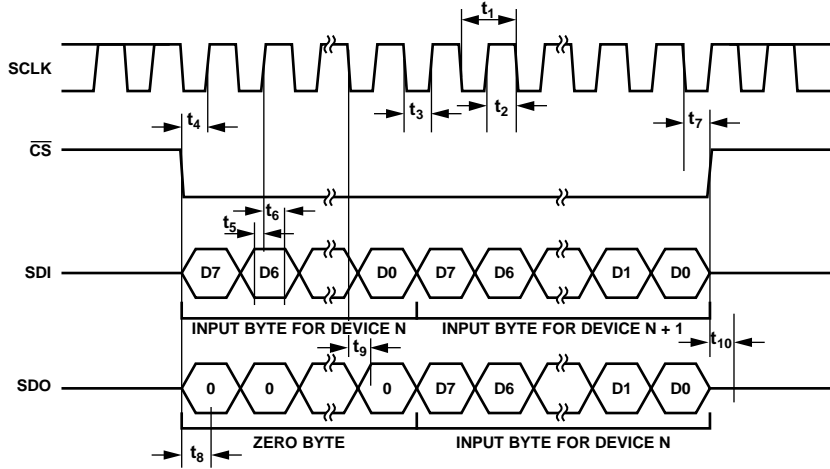


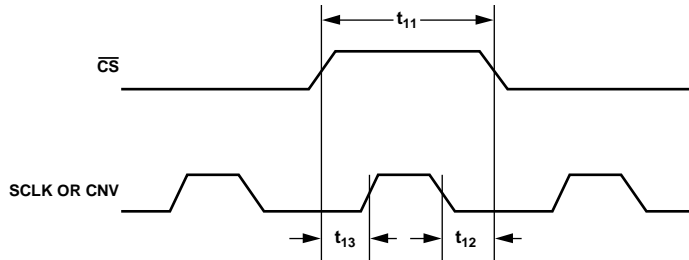
Figure 3. Address Mode Timing Diagram

16724-102



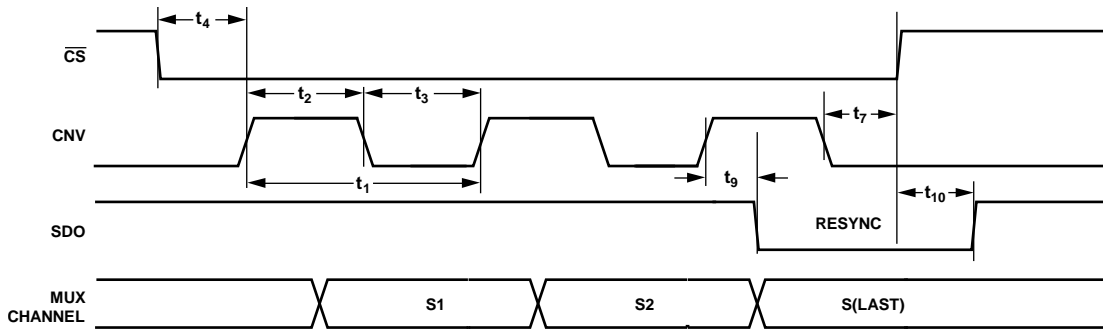
16724-103

Figure 4. Daisy Chain Timing Diagram



16724-004

Figure 5. SCLK or CNV and CS Timing Diagram



16724-006

Figure 6. Round Robin Timing Diagram

ABSOLUTE MAXIMUM RATINGS

$T_A = 25^\circ\text{C}$, unless otherwise noted.

Table 6.

| Parameter | Rating |
|---|---|
| V_{DD} to V_{SS} | 35 V |
| V_{DD} to GND | -0.3 V to +25 V |
| V_{SS} to GND | +0.3 V to -25 V |
| V_L to GND | -0.3 V to +6 V |
| Analog Inputs ¹ | $V_{SS} - 0.3\text{ V}$ to $V_{DD} + 0.3\text{ V}$ or 30 mA, whichever occurs first |
| Digital Inputs ¹ | -0.3 V to +6 V |
| Peak Current, Sx or Dx Pins ² | 59 mA (pulsed at 1 ms, 10% duty cycle maximum) |
| Continuous Current, Sx or Dx ^{2,3} | Data + 15% |
| Operating Temperature Range | -40°C to +125°C |
| Storage Temperature Range | -65°C to +150°C |
| Junction Temperature | 150°C |
| Reflow Soldering Peak Temperature, Pb-Free | 260(+0/-5)°C |

¹ Overvoltages at the digital Sx and Dx pins are clamped by internal diodes. Limit current to the maximum ratings given.

² Sx refers to the S1 to S4 pins, and Dx refers to the D1 to D4 pins.

³ See Table 4 and Table 5.

Stresses at or above those listed under Absolute Maximum Ratings may cause permanent damage to the product. This is a stress rating only; functional operation of the product at these or any other conditions above those indicated in the operational section of this specification is not implied. Operation beyond the maximum operating conditions for extended periods may affect product reliability.

Only one absolute maximum rating can be applied at any one time.

THERMAL RESISTANCE

Thermal performance is directly linked to printed circuit board (PCB) design and operating environment. Close attention to PCB thermal design is required.

Table 7. Thermal Resistance

| Package Type | θ_{JA} | θ_{JCB} ¹ | Unit |
|-----------------------|---------------|-----------------------------|------|
| CP-24-15 ² | 63.1 | 27.3 | °C/W |

¹ θ_{JCB} is the junction to the bottom of the case value.

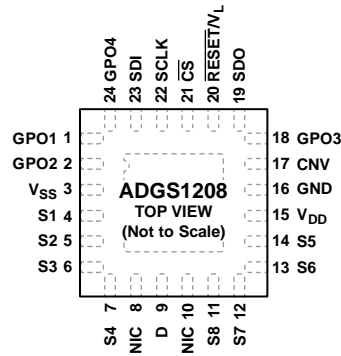
² Thermal impedance simulated values are based on a JEDEC 252P thermal test board with four thermal vias. See JEDEC JESD51.

ESD CAUTION



ESD (electrostatic discharge) sensitive device. Charged devices and circuit boards can discharge without detection. Although this product features patented or proprietary protection circuitry, damage may occur on devices subjected to high energy ESD. Therefore, proper ESD precautions should be taken to avoid performance degradation or loss of functionality.

PIN CONFIGURATIONS AND FUNCTION DESCRIPTIONS



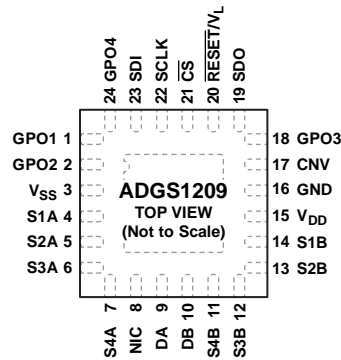
- NOTES**
1. THE EXPOSED PAD IS CONNECTED INTERNALLY. FOR INCREASED RELIABILITY OF THE SOLDER JOINTS AND MAXIMUM THERMAL CAPABILITY, IT IS RECOMMENDED THAT THE EXPOSED PAD BE SOLDERED TO THE SUBSTRATE, V_{SS} .
 2. NIC = NOT INTERNALLY CONNECTED.

16724-007

Figure 7. ADGS1208 Pin Configuration

Table 8. ADGS1208 Pin Function Descriptions

| Pin No. | Mnemonic | Description |
|---------|-------------------------------|--|
| 1 | GPO1 | General-Purpose Output 1. This pin is a digital output. |
| 2 | GPO2 | General-Purpose Output 2. This pin is a digital output. |
| 3 | V_{SS} | Most Negative Power Supply Potential. In single-supply applications, tie this pin to ground. |
| 4 | S1 | Source Terminal 1. This pin can be an input or output. |
| 5 | S2 | Source Terminal 2. This pin can be an input or output. |
| 6 | S3 | Source Terminal 3. This pin can be an input or output. |
| 7 | S4 | Source Terminal 4. This pin can be an input or output. |
| 8, 10 | NIC | Not Internally Connected. These pins are not connected internally. |
| 9 | D | Drain Terminal. This pin can be an input or output. |
| 11 | S8 | Source Terminal 8. This pin can be an input or output. |
| 12 | S7 | Source Terminal 7. This pin can be an input or output. |
| 13 | S6 | Source Terminal 6. This pin can be an input or output. |
| 14 | S5 | Source Terminal 5. This pin can be an input or output. |
| 15 | V_{DD} | Most Positive Power Supply Potential. |
| 16 | GND | Ground (0 V) Reference. |
| 17 | CNV | Channel Cycle Input. When in round robin mode, the CNV pin is used to cycle through the selected channels. |
| 18 | GPO3 | General-Purpose Output 3. This pin is a digital output. |
| 19 | SDO | Serial Data Output. This pin can be used for daisy chaining a number of these devices together or for reading back the data stored in a register for diagnostic purposes. The serial data is propagated on the falling edge of SCLK. Pull this open-drain output to V_L with an external resistor. |
| 20 | $\overline{\text{RESET}}/V_L$ | $\overline{\text{RESET}}$ /Logic Power Supply Input (V_L). Under normal operation, drive the $\overline{\text{RESET}}/V_L$ pin with a 2.7 V to 5.5 V supply. Pull the $\overline{\text{RESET}}/V_L$ pin low to complete a hardware reset. After a reset, all switches open, and the appropriate registers are set to their default values. |
| 21 | $\overline{\text{CS}}$ | Active Low Control Input. $\overline{\text{CS}}$ is the frame synchronization signal for the input data. |
| 22 | SCLK | Serial Clock Input. Data is captured on the positive edge of SCLK. Data can be transferred at rates of up to 50 MHz. |
| 23 | SDI | Serial Data Input. Data is captured on the positive edge of the serial clock input. |
| 24 | GPO4 EPAD | General-Purpose Output 4. This pin is a digital output. Exposed Pad. The exposed pad is connected internally. For increased reliability of the solder joints and maximum thermal capability, it is recommended that the exposed pad be soldered to the substrate, V_{SS} . |



NOTES

1. THE EXPOSED PAD IS CONNECTED INTERNALLY. FOR INCREASED RELIABILITY OF THE SOLDER JOINTS AND MAXIMUM THERMAL CAPABILITY, IT IS RECOMMENDED THAT THE EXPOSED PAD BE SOLDERED TO THE SUBSTRATE, V_{SS} .
2. NIC = NOT INTERNALLY CONNECTED.

16724-008

Figure 8. ADGS1209 Pin Configuration

Table 9. ADGS1209 Pin Function Descriptions

| Pin No. | Mnemonic | Description |
|---------|-------------------------------|--|
| 1 | GPO1 | General-Purpose Output 1. This pin is a digital output. |
| 2 | GPO2 | General-Purpose Output 2. This pin is a digital output. |
| 3 | V_{SS} | Most Negative Power Supply Potential. In single-supply applications, tie this pin to ground. |
| 4 | S1A | Source Terminal 1A. This pin can be an input or output. |
| 5 | S2A | Source Terminal 2A. This pin can be an input or output. |
| 6 | S3A | Source Terminal 3A. This pin can be an input or output. |
| 7 | S4A | Source Terminal 4A. This pin can be an input or output. |
| 8 | NIC | Not Internally Connected. This pin is not internally connected. |
| 9 | DA | Drain Terminal A. This pin can be an input or output. |
| 10 | DB | Drain Terminal B. This pin can be an input or output. |
| 11 | S4B | Source Terminal 4B. This pin can be an input or output. |
| 12 | S3B | Source Terminal 3B. This pin can be an input or output. |
| 13 | S2B | Source Terminal 2B. This pin can be an input or output. |
| 14 | S1B | Source Terminal 1B. This pin can be an input or output. |
| 15 | V_{DD} | Most Positive Power Supply Potential. |
| 16 | GND | Ground (0 V) Reference. |
| 17 | CNV | Channel Cycle Input. When in round robin mode, the CNV pin is used to cycle through the selected channels. |
| 18 | GPO3 | General-Purpose Output 3. This pin is a digital output. |
| 19 | SDO | Serial Data Output. This pin can be used for daisy chaining a number of these devices together or for reading back the data stored in a register for diagnostic purposes. The serial data is propagated on the falling edge of SCLK. Pull this open-drain output to V_L with an external resistor. |
| 20 | $\overline{\text{RESET}}/V_L$ | $\overline{\text{RESET}}$ /Logic Power Supply Input (V_L). Under normal operation, drive the $\overline{\text{RESET}}/V_L$ pin with a 2.7 V to 5.5 V supply. Pull the $\overline{\text{RESET}}/V_L$ pin low to complete a hardware reset. After a reset, all switches open, and the appropriate registers are set to their default values. |
| 21 | $\overline{\text{CS}}$ | Active Low Control Input. $\overline{\text{CS}}$ is the frame synchronization signal for the input data. |
| 22 | SCLK | Serial Clock Input. Data is captured on the positive edge of SCLK. Data can be transferred at rates of up to 50 MHz. |
| 23 | SDI | Serial Data Input. Data is captured on the positive edge of the serial clock input. |
| 24 | GPO4 EPAD | General-Purpose Output 4. This pin is a digital output. Exposed Pad. The exposed pad is connected internally. For increased reliability of the solder joints and maximum thermal capability, it is recommended that the exposed pad be soldered to the substrate, V_{SS} . |

TYPICAL PERFORMANCE CHARACTERISTICS



Figure 9. On Resistance vs. Source or Drain Voltage for Various Dual Supplies



Figure 12. On Resistance vs. Source or Drain Voltage for Various Temperatures, 12 V Single Supply

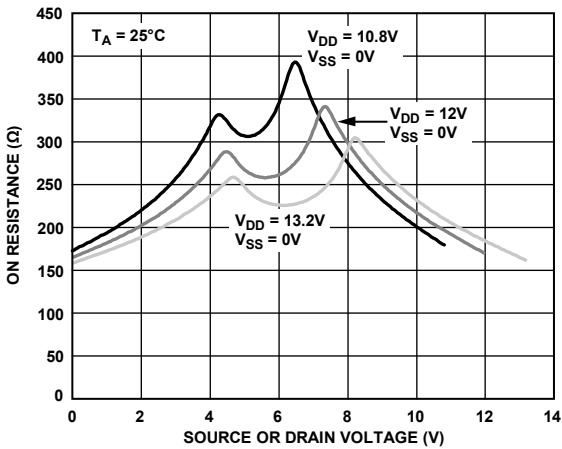


Figure 10. On Resistance vs. Source or Drain Voltage for Various Single Supplies

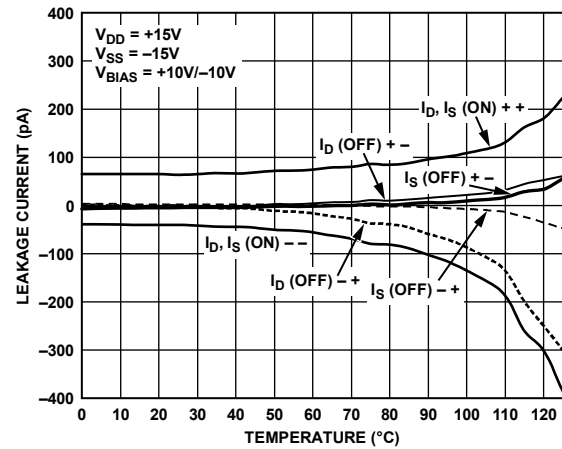


Figure 13. Leakage Current vs. Temperature, ±15 V Dual Supply

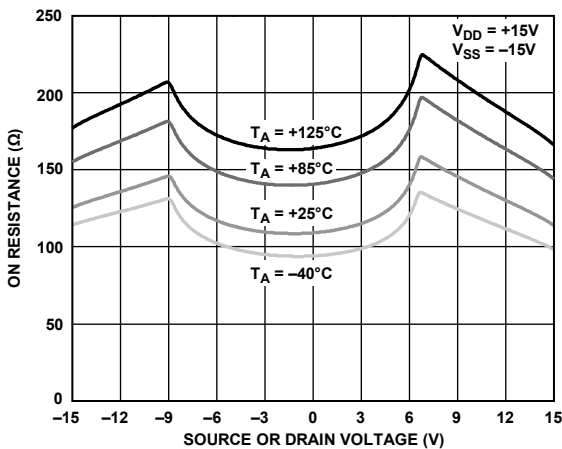


Figure 11. On Resistance vs. Source or Drain Voltage for Various Temperatures, ±15 V Dual Supply

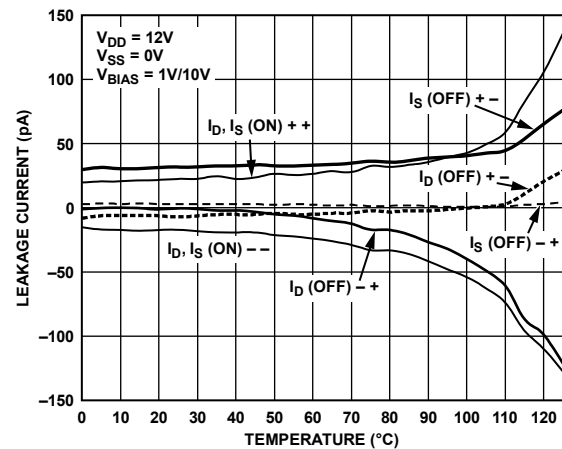


Figure 14. Leakage Current vs. Temperature, 12 V Single Supply

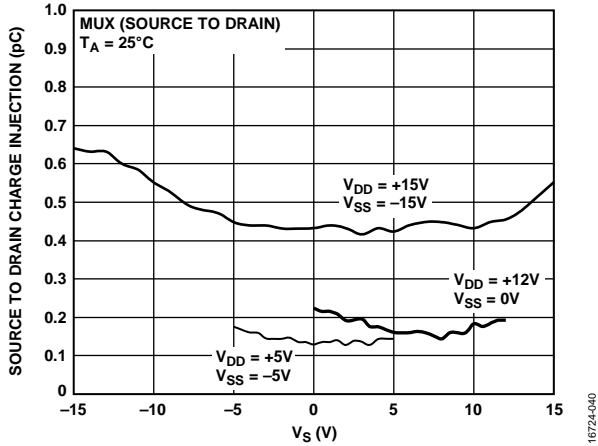


Figure 15. Source to Drain Charge Injection vs. Source Voltage (V_s)

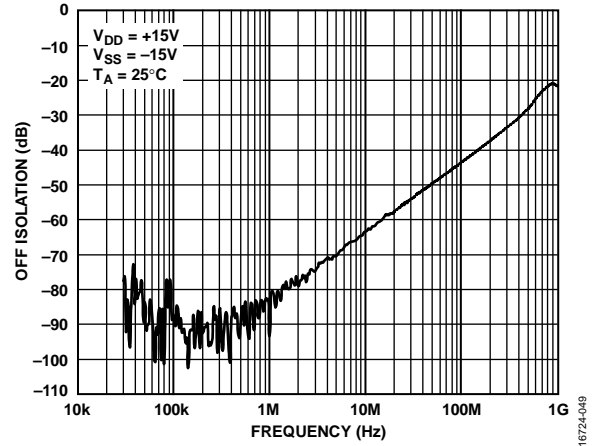


Figure 18. Off Isolation vs. Frequency, ± 15 V Dual Supply

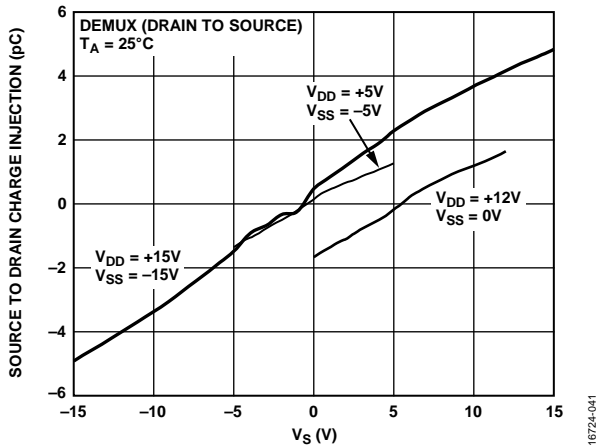


Figure 16. Drain to Source Charge Injection vs. Source Voltage (V_s)

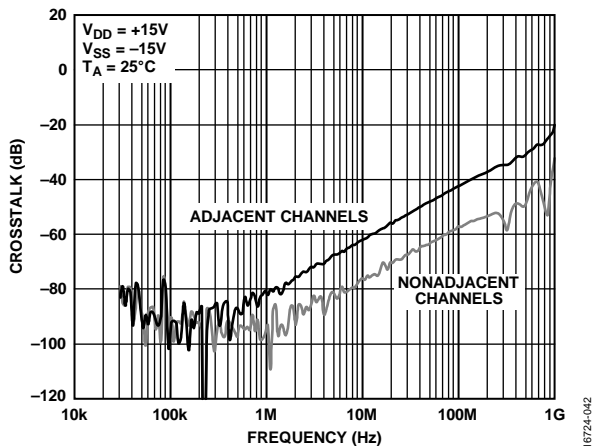


Figure 19. ADGS1208 Crosstalk vs. Frequency, ± 15 V Dual Supply

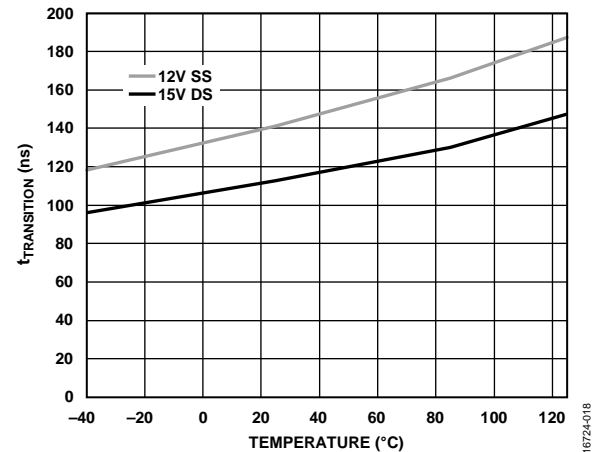


Figure 17. Transition Time ($t_{\text{TRANSITION}}$) vs. Temperature for Single Supply (SS) and Dual Supply (DS)

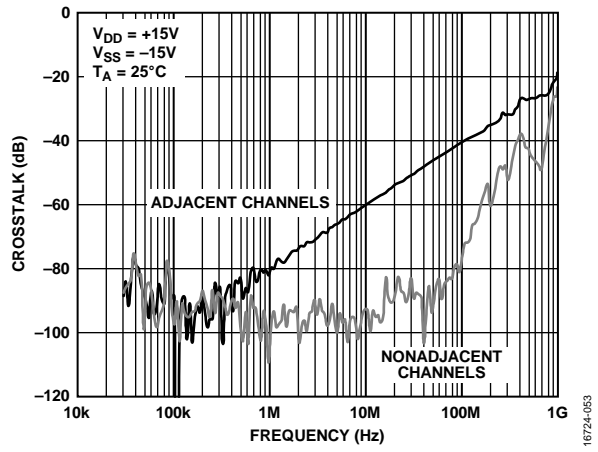


Figure 20. ADGS1209 Crosstalk vs. Frequency, ± 15 V Dual Supply



Figure 21. AC Power Supply Rejection Ratio (ACPSRR) vs. Frequency, ±15 V Dual Supply

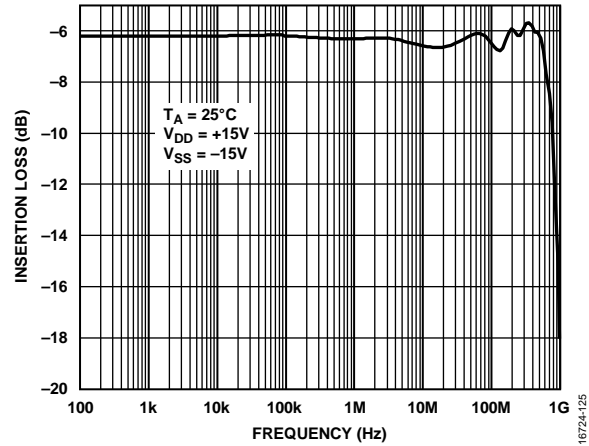


Figure 24. ADGS1209 Insertion Loss vs. Frequency, ±15 V Dual Supply

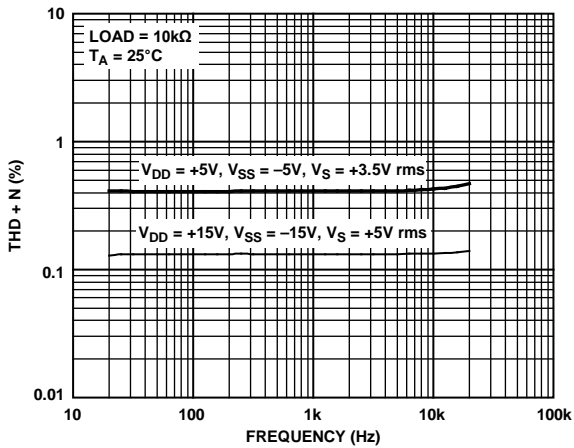


Figure 22. THD + N vs. Frequency

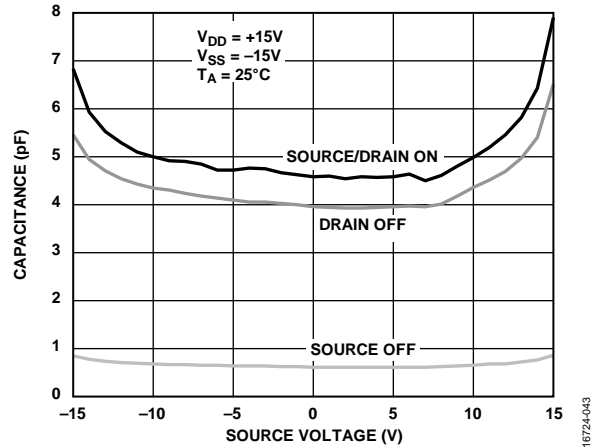


Figure 25. ADG1208 Capacitance vs. Source Voltage, ±15 V Dual Supply

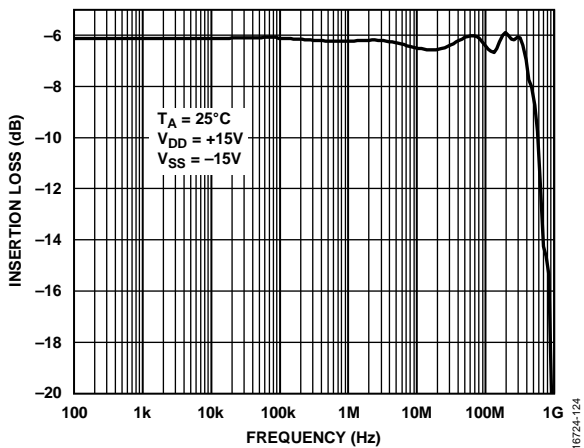


Figure 23. ADGS1208 Insertion Loss vs. Frequency, ±15 V Dual Supply

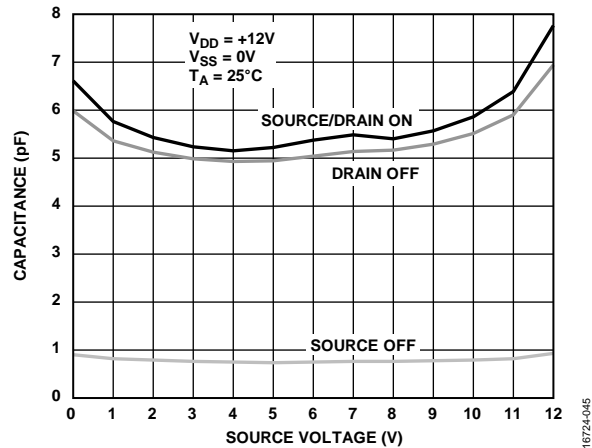


Figure 26. ADG1208 Capacitance vs. Source Voltage, 12 V Single Supply

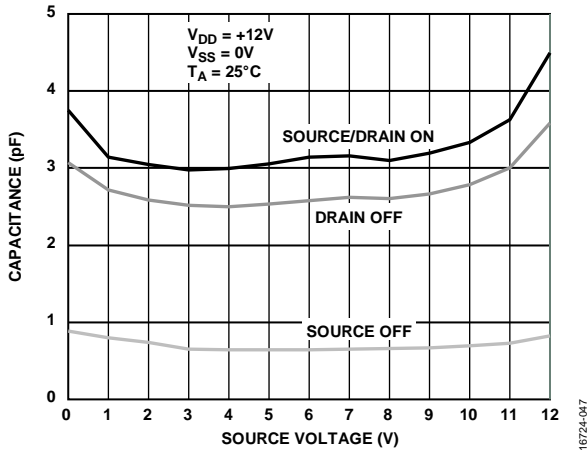


Figure 27. ADG1209 Capacitance vs. Source Voltage, 12 V Single Supply

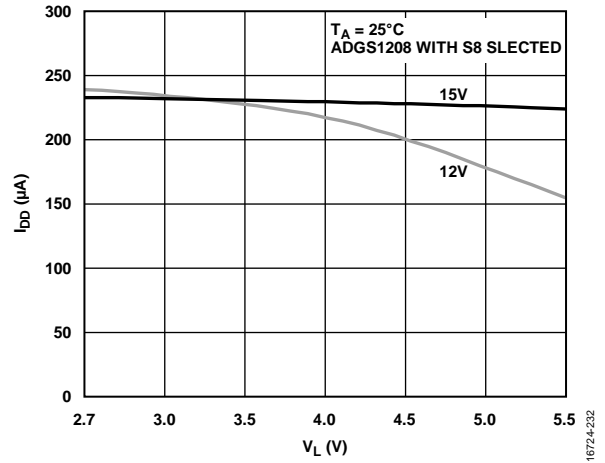


Figure 30. I_{DD} vs. V_L

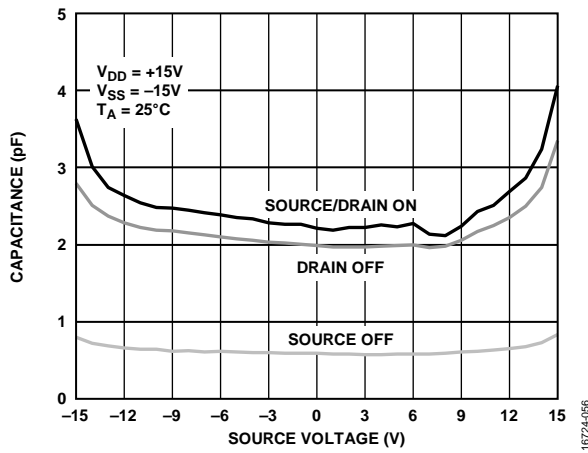


Figure 28. ADG1209 Capacitance vs. Source Voltage, ± 15 V Dual Supply

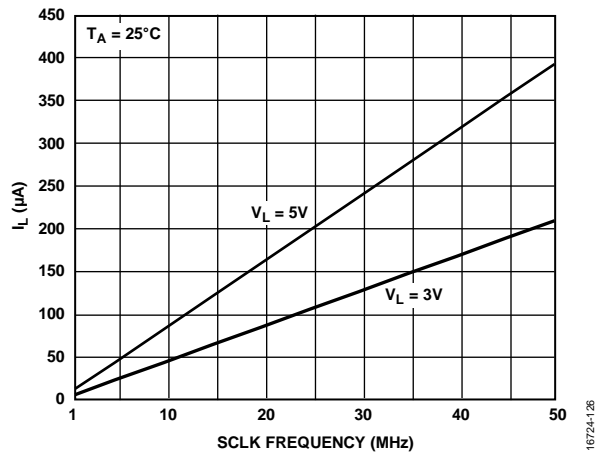


Figure 31. I_L vs. SCLK Frequency when \overline{CS} is High

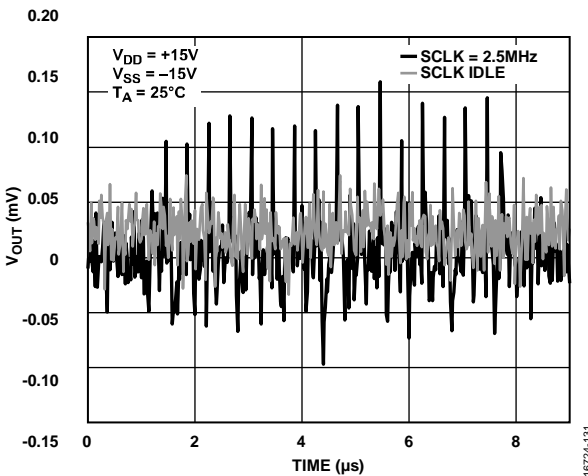


Figure 29. Digital Feedthrough

TEST CIRCUITS

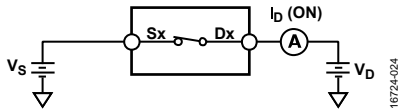


Figure 32. On Leakage

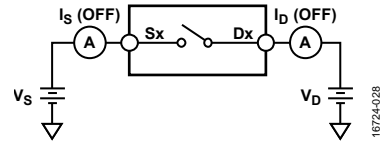
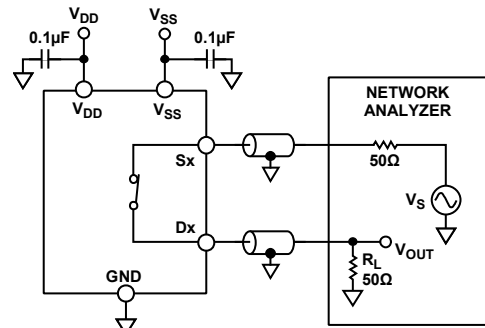


Figure 36. Off Leakage



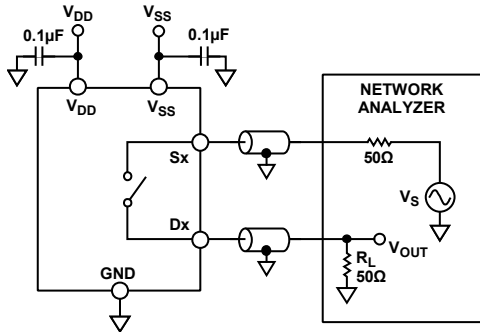
CHANNEL TO CHANNEL CROSSTALK = $20 \log \frac{V_{OUT}}{V_S}$

Figure 33. Channel to Channel Crosstalk



INSERTION LOSS = $20 \log \frac{V_{OUT} \text{ WITH SWITCH}}{V_S \text{ WITHOUT SWITCH}}$

Figure 37. Insertion Loss/–3 dB Bandwidth



OFF ISOLATION = $20 \log \frac{V_{OUT}}{V_S}$

Figure 34. Off Isolation

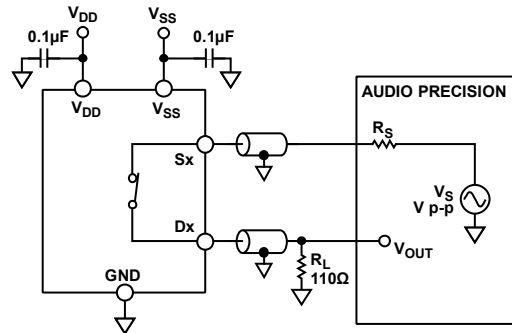
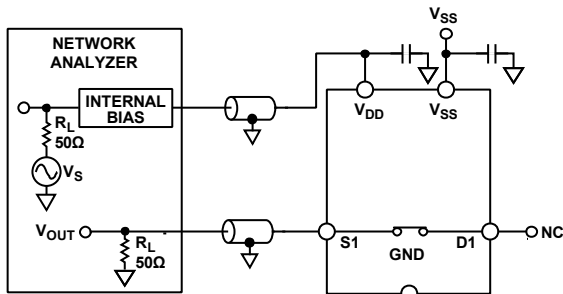


Figure 38. THD + N



ACPSRR = $20 \log \frac{V_{OUT}}{V_S}$

Figure 35. ACPSRR

NOTES
1. BOARD AND COMPONENT EFFECTS ARE NOT DE-EMBEDDED FROM THE ACPSRR MEASUREMENT.

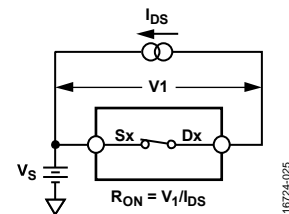


Figure 39. On Resistance

16724-141

16724-026

16724-027

16724-130

16724-029

16724-025

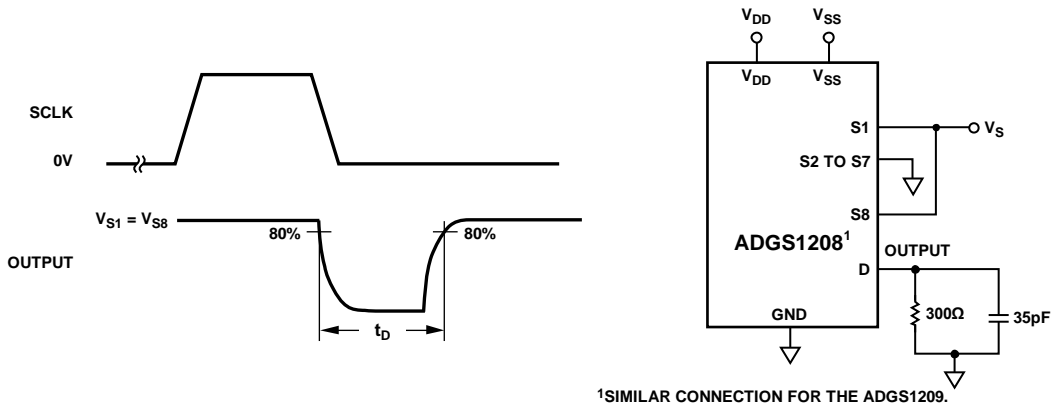


Figure 40. Break-Before-Make Time Delay, t_d

16724-143

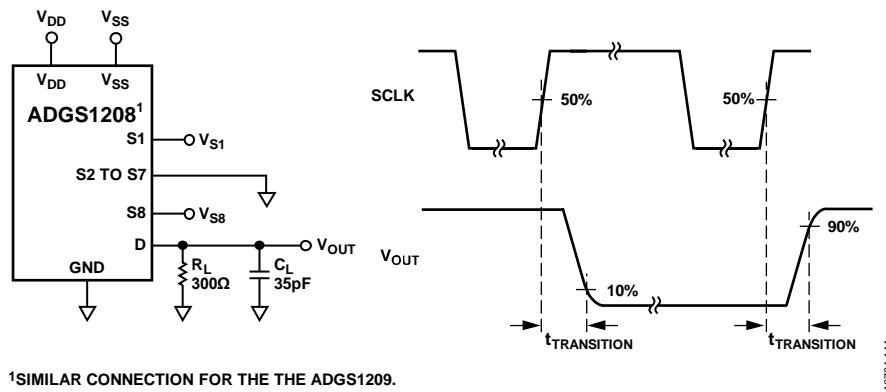


Figure 41. Transition Time, $t_{TRANSITION}$

16724-144

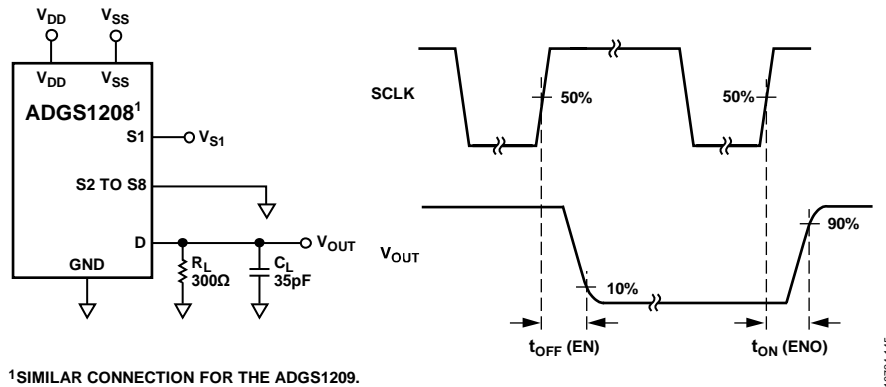


Figure 42. Switching Times, $t_{ON} (EN)$ and $t_{OFF} (EN)$

16724-145

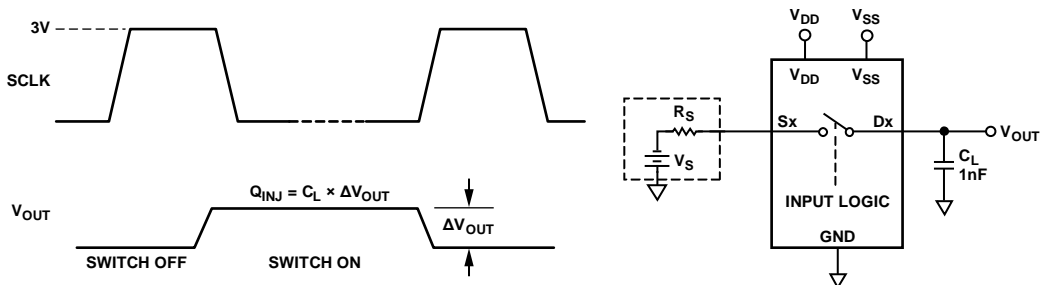


Figure 43. Charge Injection, Q_{INJ}

16724-132

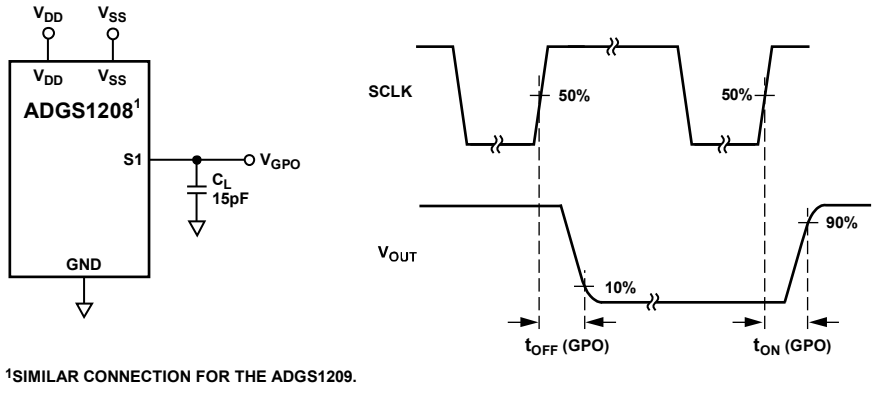


Figure 44. GPOx Timing, t_{ON} and t_{OFF}

16724-146

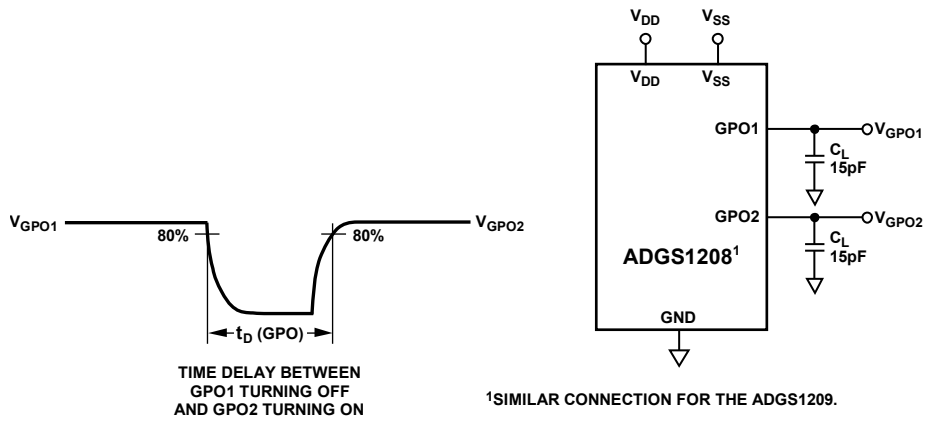


Figure 45. GPOx Break-Before-Make Time Delay, t_D

16724-147

TERMINOLOGY

I_{DD}

I_{DD} is the positive supply current.

I_{SS}

I_{SS} is the negative supply current.

V_D, V_S

V_D and V_S are the analog voltage on Terminal Dx and Terminal Sx, respectively.

R_{ON}

R_{ON} is the ohmic resistance between Terminal Dx and Terminal Sx.

ΔR_{ON}

ΔR_{ON} is the difference between the R_{ON} of any two channels.

$R_{FLAT(ON)}$

$R_{FLAT(ON)}$ is flatness that is the difference between maximum and minimum on resistance values measured over the specified analog signal range.

I_S (Off)

I_S (Off) is the source leakage current with the switch off.

I_D (Off)

I_D (Off) is the drain leakage current with the switch off.

I_S (On), I_D (On)

I_S (On) and I_D (On) are the channel leakage currents with the switch on.

V_{INL}

V_{INL} is the maximum input voltage for Logic 0.

V_{INH}

V_{INH} is the minimum input voltage for Logic 1.

I_{INL}, I_{INH}

I_{INL} and I_{INH} are the low and high input currents of the digital inputs, respectively.

C_S (Off)

C_S (Off) is the off switch source capacitance, which is measured with reference to ground.

C_D (Off)

C_D (Off) is the off switch drain capacitance, which is measured with reference to ground.

C_S (On), C_D (On)

C_S (On) and C_D (On) are the on switch capacitances, which are measured with reference the ground.

C_{IN}

C_{IN} is the digital input capacitance.

t_{ON}

t_{ON} is the delay between applying the digital control input and the output switching on.

t_{OFF}

t_{OFF} is the delay between applying the digital control input and the output switching off.

Off Isolation

Off isolation is a measure of unwanted signal coupling through an off switch.

Charge Injection

Charge injection is a measure of the glitch impulse transferred from the digital input to the analog output during switching.

Crosstalk

Crosstalk is a measure of unwanted signal that is coupled through from one channel to another as a result of parasitic capacitance.

-3 dB Bandwidth

Bandwidth is the frequency at which the output is attenuated by 3 dB.

On Response

On response is the frequency response of the on switch.

Insertion Loss

Insertion loss is the loss due to the on resistance of the switch.

Total Harmonic Distortion + Noise (THD + N)

THD + N is the ratio of the harmonic amplitude plus noise of the signal to the fundamental.

AC Power Supply Rejection Ratio (ACPSRR)

ACPSRR is the ratio of the amplitude of signal on the output to the amplitude of the modulation. ACPSRR is a measure of the ability of the devices to avoid coupling noise and spurious signals that appear on the supply voltage pin to the output of the switch. The dc voltage on the device is modulated by a sine wave of 0.62 V p-p.

THEORY OF OPERATION

The ADGS1208/ADGS1209 are a set of serially controlled analog multiplexers comprising eight single channels and four differential channels, respectively, with error detection features. SPI Mode 0 and SPI Mode 3 can be used with the devices, and they operate with SCLK frequencies up to 50 MHz. The default mode for the ADGS1208/ADGS1209 is address mode, in which the registers of the device are accessed by a 16-bit SPI command bounded by \overline{CS} . The SPI command becomes 24-bit if the user enables CRC error detection. Other error detection features include SCLK count error and invalid read/write error. If any of these SPI interface errors occur, they are detectable by reading the error flags register. The ADGS1208/ADGS1209 can also operate in two other modes, namely burst mode and daisy-chain mode.

The interface pins of the ADGS1208/ADGS1209 are \overline{CS} , SCLK, SDI, and SDO. Hold \overline{CS} low when using the SPI interface. Data is captured on SDI on the rising edge of SCLK, and data is propagated out on SDO on the falling edge of SCLK. SDO has an open-drain output; thus, connect a pull-up to this output. When not pulled low by the ADGS1208/ADGS1209, SDO is in a high impedance state.

ADDRESS MODE

Address mode is the default mode for the ADGS1208/ADGS1209 on power-up. A single SPI frame in address mode is bounded by a \overline{CS} falling edge and the succeeding \overline{CS} rising edge. An SPI frame is comprised of 16 SCLK cycles. The timing diagram for address mode is shown in Figure 46. The first SDI bit indicates if the SPI command is a read or write command. When the first bit is set to 0, a write command is issued, and if the first bit is set to 1, a read command is issued. The next seven bits determine the target register address. The remaining eight bits provide the data to the addressed register. The last eight bits are ignored during a read command, because during these clock cycles, SDO propagates out the data contained in the addressed register.

The target register address of an SPI command is determined on the eighth SCLK rising edge. Data from this register propagates out on SDO from the ninth to the 16th SCLK falling edge during SPI reads. A register write occurs on the 16th SCLK rising edge during SPI writes.

During any SPI command, SDO sends out eight alignment bits on the first eight SCLK falling edges. The alignment bits observed at SDO are 0x25.

ERROR DETECTION FEATURES

Protocol and communication errors on the SPI interface are detectable. The three detectable errors are incorrect SCLK error detection, invalid read and write address error detection, and CRC error detection. Each error has a corresponding enable bit in the error configuration register. In addition, there is an error flag bit for each error in the error flags register.

Cyclic Redundancy Check (CRC) Error Detection

The CRC error detection feature extends a valid SPI frame by eight SCLK cycles. These eight extra cycles are needed to send the CRC byte for that SPI frame. The CRC byte is calculated by the SPI block using the 16-bit payload: the R/W bit, Register Address Bits[6:0], and Register Data Bits[7:0]. The CRC polynomial used in the SPI block is $x^8 + x^2 + x^1 + 1$ with a seed value of 0. For a timing diagram with CRC enabled, see Figure 47. Register writes occur at the 24th SCLK rising edge with CRC error checking enabled.

During an SPI write, the microcontroller/CPU provides the CRC byte through SDI. The SPI block checks the CRC byte just before the 24th SCLK rising edge. On this same edge, the register write is prevented if an incorrect CRC byte is received by the SPI interface. In the case that an incorrect CRC byte is detected, the CRC error flag is asserted in the error flags register.

During an SPI read, the CRC byte is provided to the microcontroller through SDO.

The CRC error detection feature is disabled by default and can be configured by the user through the error configuration register.

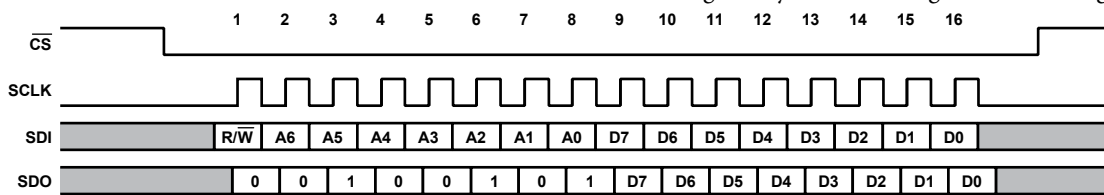


Figure 46. Address Mode Timing Diagram

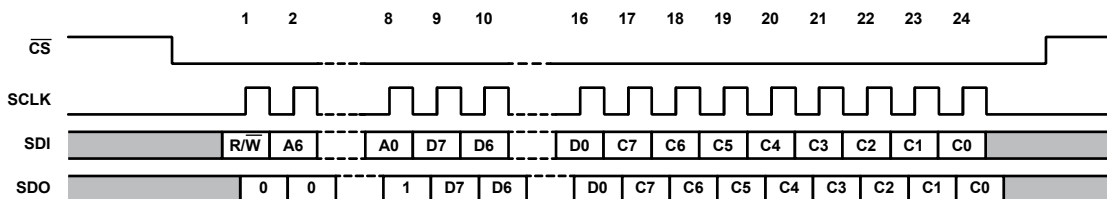


Figure 47. Timing Diagram with CRC Enabled

SCLK Count Error Detection

SCLK count error detection allows the user to detect if an incorrect number of SCLK cycles are sent by the microcontroller/CPU. When in address mode, with CRC disabled, 16 SCLK cycles are expected. If 16 SCLK cycles are not detected, the SCLK count error flag asserts in the error flags register. When less than 16 SCLK cycles are received by the device, a write to the register map never occurs. When the ADGS1208/ADGS1209 receive more than 16 SCLK cycles, a write to the memory map still occurs at the 16th SCLK rising edge, and the flag asserts in the error flags register. With CRC enabled, the expected number of SCLK cycles is 24. SCLK count error detection is enabled by default and can be configured by the user through the error configuration register.

Invalid Read/Write Address Error Detection

An invalid read/write address error detects when a nonexistent register address is a target for a read or write. In addition, this error asserts when a write to a read only register is attempted. The invalid read/write address error flag asserts in the error flags register when an invalid read/write address error occurs. The invalid read/write address error is detected on the ninth SCLK rising edge, which means a write to the register never occurs when an invalid address is targeted. Invalid read/write address error detection is enabled by default and can be disabled by the user through the error configuration register.

CLEARING THE ERROR FLAGS REGISTER

To clear the error flags register, write the special 16-bit SPI frame, 0x6CA9, to the device. This SPI command does not trigger the invalid read/write address error. When CRC is enabled, the user must also send the correct CRC byte for a successful error clear command. At the 16th or 24th SCLK rising edge, the error flags register resets to 0.

BURST MODE

The SPI interface can accept consecutive SPI commands without the need to de-assert the CS line, which is called burst mode. Burst mode is enabled through the burst enable register. This mode uses the same 16-bit command to communicate with the device. In addition, the response of the device at SDO is still aligned with the corresponding SPI command. Figure 48 shows an example of SDI and SDO during burst mode.

The invalid read/write address and CRC error checking functions operate similarly during burst mode as they do during address mode. However, SCLK count error detection operates in a slightly different manner. The total number of SCLK cycles within a given CS frame are counted, and if the total is not a multiple of 16, or a multiple of 24 when CRC is enabled, the SCLK count error flag asserts.

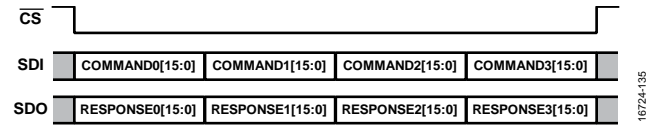


Figure 48. Burst Mode Frame

SOFTWARE RESET

When in address mode, the user can initiate a software reset. To do so, write two consecutive SPI commands, 0xA3 followed by 0x05, targeting Register 0x0B. After a software reset, all register values are set to default.

DAISY-CHAIN MODE

The connection of several ADGS1208/ADGS1209 devices in a daisy chain configuration is possible, and Figure 49 shows this setup. All devices share the same CS and SCLK line, whereas the SDO of a device forms a connection to the SDI of the next device, creating a shift register. In daisy-chain mode, SDO is an eight cycle delayed version of SDI. When in daisy-chain mode, all commands target the switch data register. Therefore, it is not possible to make configuration changes while in daisy-chain mode.

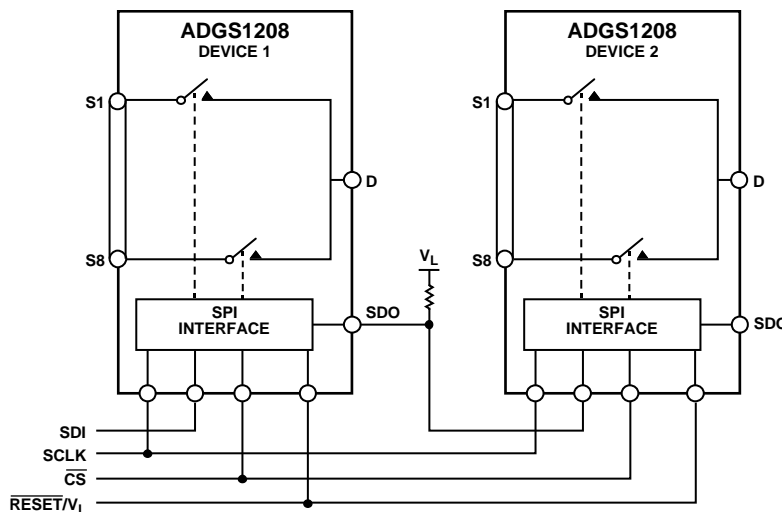


Figure 49. Two ADGS1208/ADGS1209 Devices Connected in a Daisy-Chain Configuration

The ADGS1208/ADGS1209 can only enter daisy-chain mode when in address mode by sending the 16-bit SPI command, 0x2500 (see Figure 50). When the ADGS1208/ADGS1209 receive this command, the SDO of the device sends out the same command because the alignment bits at SDO are 0x25, which allows multiple daisy-connected devices to enter daisy-chain mode in a single SPI frame. A hardware reset is required to exit daisy-chain mode.

For the timing diagram of a typical daisy-chain SPI frame, see Figure 51. When CS goes high, Device 1 writes Command 0, Bits[7:0] to its switch data register, Device 2 writes Command 1, Bits[7:0] to its switches, and so on. The SPI block uses the last eight bits it received through SDI to update the switches. After entering daisy chain mode, the first eight bits sent out by SDO on each device in the chain are 0x00. When CS goes high, the internal shift register value does not reset back to 0.

An SCLK rising edge reads in data on SDI while data is propagated out of SDO on an SCLK falling edge. The expected number of SCLK cycles must be a multiple of eight before CS goes high. When this is not the case, the SPI interface sends the last eight bits received to the switch data register.

POWER-ON RESET

The digital section of the ADGS1208/ADGS1209 goes through an initialization phase during V_L power up. This initialization also occurs after a hardware or software reset. After V_L power-up or a reset, ensure that a minimum of 120 μs from the time of power-up or reset before any SPI command is issued. Ensure that V_L does not drop out during the 120 μs initialization phase, because it may result in incorrect operation of the ADGS1208/ADGS1209.

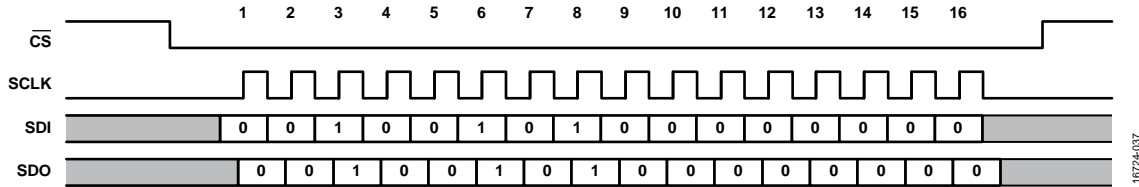


Figure 50. SPI Command to Enter Daisy-Chain Mode



NOTES
1. SDO2 AND SDO3 ARE THE OUTPUT COMMANDS FROM DEVICE 2 AND DEVICE 3, RESPECTIVELY.

Figure 51. Example of an SPI Frame Where Four ADGS1208/ADGS1209 Devices Connect in Daisy-Chain Mode

ROUND ROBIN MODE

Round robin mode allows the ADGS1208/ADGS1209 to cycle through the channels faster by reducing the overhead needed from the digital interface to switch from one channel to the next. The round robin configuration register selects which channels are to be included in a cycle, while the CNV edge select register selects on which edge of CNV the ADGS1208/ADGS1209 switch to the next channel in the sequence. At the end of the channel cycle, a resync pulse appears on SDO to inform the user that the current cycle ended and then it loops back to the start of the sequence of channels. Figure 52 shows an example of the round robin mode interface and Figure 53 shows the CNV signal of the analog-to-digital converter (ADC) being used in conjunction with the ADGS1208 in round robin mode.

After configuration completes, the round robin enable register allows the ADGS1208/ADGS1209 to enter round robin mode.

When in round robin mode, the SPI is no longer used to switch between channels. Instead, to switch from one channel to another, ensure that a digital signal is present on the CNV pin while \overline{CS} is pulled low.

To exit round robin mode, either perform a hardware reset or send the 16-bit addressable mode SPI frames: 0xA318 followed by 0xE3B4. These are the only SPI commands recognized by the SPI interface while in round robin mode.

Round robin mode is significantly faster than addressable mode to cycle through channels because it removes the 16-bit overhead required to change input channel. In addition, round robin mode removes the need for SCLK to be running, which reduces the digital current consumption (I_L). The maximum CNV frequency is bound by the transition time of the device, along with the required settling time for the application.



Figure 52. Round Robin Mode Interface Example

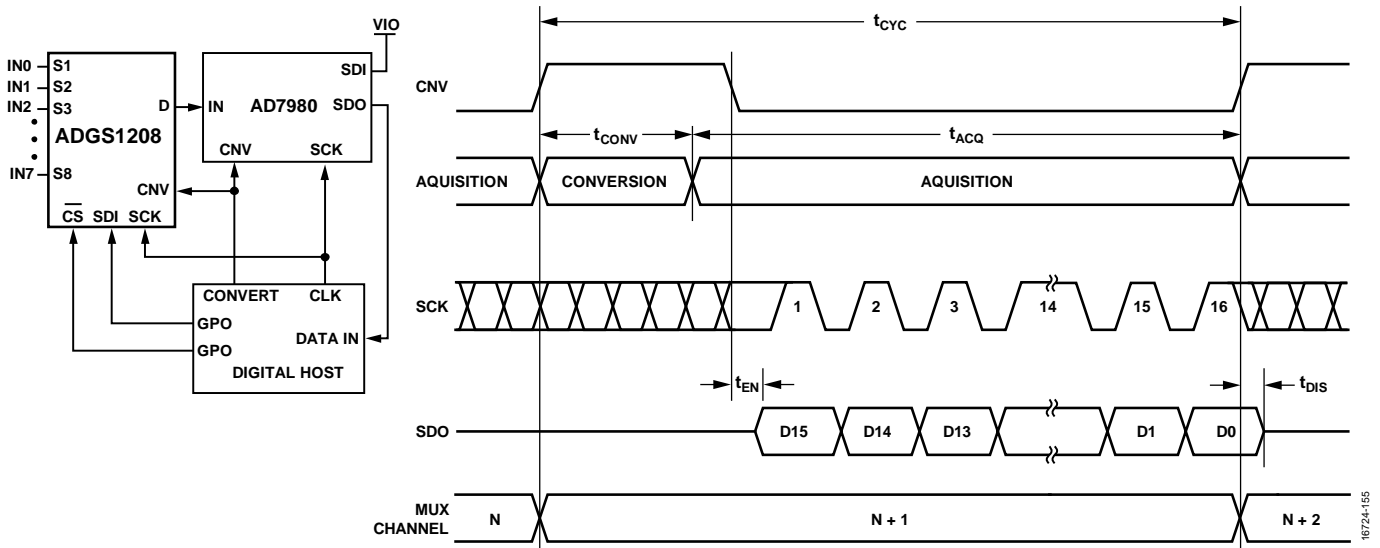


Figure 53. Example of CNV Signal of an ADC Cycling Through Channels in the ADGS1208

GENERAL-PURPOSE OUTPUTS

The ADGS1208/ADGS1209 have four general-purpose outputs (GPOs). These digital outputs allow the control of other devices using the ADGS1208/ADGS1209. The GPOs are controlled from the SW_DATA register, where they can be either set high

or low. When the device is in round robin mode, the GPOs are driven low. The logic low level is GND and V_L sets the logic high level. Figure 54 shows how the ADGS1208 can be used to control another device, which in this example is the ADG758.



Figure 54. ADGS1208 Device Controlling the ADG758

16724-156

APPLICATIONS INFORMATION

DIGITAL INPUT BUFFERS

There are input buffers present on the digital input pins ($\overline{\text{CS}}$, SCLK, and SDI). These buffers are active at all times; as result, there is current draw from the V_L supply if SCLK or SDI are toggling, regardless of whether $\overline{\text{CS}}$ is active. For typical values of this current draw, refer to the Specifications section and Figure 31.

SETTLING TIME

Disturbances are apparent on the source/drain when switching between channels, as is typical with complementary metal-oxide semiconductor (CMOS) switches and multiplexers. A sufficient wait time is necessary for these disturbances to settle before taking a measurement to ensure an accurate reading. The settling time for a data acquisition system is dependent on the load on the output of the multiplexer.

POWER SUPPLY RAILS

To guarantee correct operation of the ADGS1208/ADGS1209, 0.1 μF decoupling capacitors are required.

The ADGS1208/ADGS1209 can operate with bipolar supplies between $\pm 4.5\text{ V}$ and $\pm 16.5\text{ V}$. The supplies on V_{DD} and V_{SS} do not need to be symmetrical. However, the V_{DD} to V_{SS} range must not exceed 33 V. The ADGS1208/ADGS1209 can also operate with single supplies between 5 V and 20 V with V_{SS} connected to GND.

The voltage range that can be supplied to V_L is from 2.7 V to 5.5 V.

The device is fully specified at $\pm 15\text{ V}$ and $+12\text{ V}$ analog supply voltage ranges.

POWER SUPPLY RECOMMENDATIONS

Analog Devices, Inc., has a wide range of power management products to meet the requirements of most high performance signal chains.

An example of a bipolar power solution is shown in Figure 55. The ADP5070 dual switching regulator generates a positive and negative supply rail for the ADGS1208/ADGS1209, amplifier, and/or a precision converter in a typical signal chain. Also shown in Figure 55 are two optional low dropout (LDO) regulators, ADP7118 and ADP7182 (positive and negative, respectively), that can be used to reduce the output ripple of the ADP5070 in ultralow noise sensitive applications.

The ADM7160 can be used to generate the V_L voltage required to power digital circuitry within the ADGS1208/ADGS1209.



Figure 55. Bipolar Power Solution

Table 10. Recommended Power Management Devices

| Product | Description |
|---------|--|
| ADP5070 | 1 A/0.6 A, dc-to-dc switching regulator with independent positive and negative outputs |
| ADM7160 | 5.5 V, 200 mA, ultralow noise LDO linear regulator |
| ADP7118 | 20 V, 200 mA, low noise CMOS LDO linear regulator |
| ADP7182 | -28 V, -200 mA, low noise LDO linear regulator |

REGISTER SUMMARIES

Table 11. ADGS1208 Register Summary

| Reg. | Name | Bit 7 | Bit 6 | Bit 5 | Bit 4 | Bit 3 | Bit 2 | Bit 1 | Bit 0 | Default | RW |
|------|-----------------------|-------------|-------|-------|-------|-------|-------------|---------------|----------------|---------|-----|
| 0x01 | SW_DATA | GPO4 | GPO3 | GPO2 | GPO1 | A2 | A1 | A0 | EN | 0x00 | R/W |
| 0x02 | ERR_CONFIG | Reserved | | | | | RW_ERR_EN | SCLK_ERR_EN | CRC_ERR_EN | 0x06 | R/W |
| 0x03 | ERR_FLAGS | Reserved | | | | | RW_ERR_FLAG | SCLK_ERR_FLAG | CRC_ERR_FLAG | 0x00 | R |
| 0x05 | BURST_EN | Reserved | | | | | | | BURST_MODE_EN | 0x00 | R/W |
| 0x06 | ROUND_ROBIN_EN | Reserved | | | | | | | ROUND_ROBIN_EN | 0x00 | R/W |
| 0x07 | RROBIN_CHANNEL_CONFIG | S8_EN | S7_EN | S6_EN | S5_EN | S4_EN | S3_EN | S2_EN | S1_EN | 0xFF | R/W |
| 0x09 | CNV_EDGE_SEL | RESERVED | | | | | | | CNV_EDGE_SEL | 0x00 | R/W |
| 0x0B | SOFT_RESETB | SOFT_RESETB | | | | | | | 0x00 | R/W | |

Table 12. ADGS1209 Register Summary

| Reg. | Name | Bit 7 | Bit 6 | Bit 5 | Bit 4 | Bit 3 | Bit 2 | Bit 1 | Bit 0 | Default | RW |
|------|-----------------------|-------------|-------|-------|-------|----------|-------------|---------------|----------------|---------|-----|
| 0x01 | SW_DATA | GPO4 | GPO3 | GPO2 | GPO1 | Reserved | A1 | A0 | EN | 0x00 | R/W |
| 0x02 | ERR_CONFIG | Reserved | | | | | RW_ERR_EN | SCLK_ERR_EN | CRC_ERR_EN | 0x06 | R/W |
| 0x03 | ERR_FLAGS | Reserved | | | | | RW_ERR_FLAG | SCLK_ERR_FLAG | CRC_ERR_FLAG | 0x00 | R |
| 0x05 | BURST_EN | Reserved | | | | | | | BURST_MODE_EN | 0x00 | R/W |
| 0x06 | ROUND_ROBIN_EN | Reserved | | | | | | | ROUND_ROBIN_EN | 0x00 | R/W |
| 0x07 | RROBIN_CHANNEL_CONFIG | Reserved | | | S4_EN | S3_EN | S2_EN | S1_EN | 0x0F | R/W | |
| 0x09 | CNV_EDGE_SEL | Reserved | | | | | | | CNV_EDGE_SEL | 0x00 | R/W |
| 0x0B | SOFT_RESETB | SOFT_RESETB | | | | | | | 0x00 | R/W | |

REGISTER DETAILS

SWITCH DATA REGISTER

Address: 0x01, Reset: 0x00, Name: SW_DATA

The switch data register controls the status of the eight switches of the ADGS1208/ADGS1209 as well as the general-purpose digital outputs. Use the ADGS1208/ADGS1209 truth tables in conjunction with the bit descriptions.

Table 13. Bit Descriptions for SW_DATA in the ADGS1208

| Bits | Bit Name | Settings | Description | Default | Access |
|------|----------|----------|---|---------|--------|
| 7 | GPO4 | | Enable bit for GPO4. | 0x0 | R/W |
| 6 | GPO3 | | Enable bit for GPO3. | 0x0 | R/W |
| 5 | GPO2 | | Enable bit for GPO2. | 0x0 | R/W |
| 4 | GPO1 | | Enable bit for GPO1. | 0x0 | R/W |
| 3 | A2 | | Enable bit for A2. | 0x0 | R/W |
| 2 | A1 | | Enable bit for A1. | 0x0 | R/W |
| 1 | A0 | | Enable bit for A0. | 0x0 | R/W |
| 0 | EN | 0 1 | Enable bit for the ADGS1208. ADGS1208 disabled. ADGS1208 enabled. | 0x0 | R/W |

Table 14. Bit Descriptions for SW_DATA ADGS1209

| Bits | Bit Name | Settings | Description | Default | Access |
|------|----------|----------|---|---------|--------|
| 7 | GPO4 | | Enable bit for GPO4. | 0x0 | R/W |
| 6 | GPO3 | | Enable bit for GPO3. | 0x0 | R/W |
| 5 | GPO2 | | Enable bit for GPO2. | 0x0 | R/W |
| 4 | GPO1 | | Enable bit for GPO1. | 0x0 | R/W |
| 3 | Reserved | | This bit is reserved. Set this bit to 0. | 0x0 | R |
| 2 | A1 | | Enable bit for A1. | 0x0 | R/W |
| 1 | A0 | | Enable bit for A0. | 0x0 | R/W |
| 0 | EN | 0 1 | Enable bit for ADGS1209. ADGS1209 disabled. ADGS1209 enabled. | 0x0 | R/W |

Table 15. ADGS1208 Truth Table

| A2 | A1 | A0 | EN | On Switch |
|----|----|----|----|-----------|
| X | X | X | 0 | None |
| 0 | 0 | 0 | 1 | S1 |
| 0 | 0 | 1 | 1 | S2 |
| 0 | 1 | 0 | 1 | S3 |
| 0 | 1 | 1 | 1 | S4 |
| 1 | 0 | 0 | 1 | S5 |
| 1 | 0 | 1 | 1 | S6 |
| 1 | 1 | 0 | 1 | S7 |
| 1 | 1 | 1 | 1 | S8 |

Table 16. ADGS1209 Truth Table

| A1 | A0 | EN | On Switch Pair |
|----|----|----|----------------|
| X | X | 0 | None |
| 0 | 0 | 1 | S1 |
| 0 | 1 | 1 | S2 |
| 1 | 0 | 1 | S3 |
| 1 | 1 | 1 | S4 |

ERROR CONFIGURATION REGISTER

Address: 0x02, Reset: 0x06, Name: ERR_CONFIG

The error configuration register allows the user to enable and disable the relevant error features as required.

Table 17. Bit Descriptions for ERR_CONFIG

| Bits | Bit Name | Settings | Description | Default | Access |
|-------|-------------|----------|--|---------|--------|
| [7:3] | Reserved | | These bits are reserved. Set these bits to 0. | 0x0 | R |
| 2 | RW_ERR_EN | 0 1 | Enable bit for detecting an invalid read/write address. Disabled. Enabled. | 0x1 | R/W |
| 1 | SCLK_ERR_EN | 0 1 | Enable bit for detecting the correct number of SCLK cycles in an SPI frame. 16 SCLK cycles are expected when CRC is disabled and burst mode is disabled. 24 SCLK cycles are expected when CRC is enabled and burst mode is disabled. A multiple of 16 SCLK cycles is expected when CRC is disabled and burst mode is enabled. A multiple of 24 SCLK cycles is expected when CRC is enabled and burst mode is enabled. Disabled. Enabled. | 0x1 | R/W |
| 0 | CRC_ERR_EN | 0 1 | Enable bit for CRC error detection. SPI frames are 24 bits wide when enabled. Disabled. Enabled. | 0x0 | R/W |

ERROR FLAGS REGISTER

Address: 0x03, Reset: 0x00, Name: ERR_FLAGS

The error flags register allows the user to determine if an error occurred. To clear the error flags register, write the special 16-bit SPI command, 0x6CA9, to the device. This SPI command does not trigger the invalid R/W address error. When CRC is enabled, the user must include the correct CRC byte during the SPI write for the clear error flags register command to succeed.

Table 18. Bit Descriptions for ERR_FLAGS

| Bits | Bit Name | Settings | Description | Default | Access |
|-------|---------------|----------|---|---------|--------|
| [7:3] | Reserved | | These bits are reserved. Set these bits to 0. | 0x0 | R |
| 2 | RW_ERR_FLAG | 0 1 | Error flag for invalid read/write address. The error flag asserts during an SPI read if the target address does not exist. The error flag also asserts when the target address of an SPI write does not exist or is read only. No error. Error. | 0x0 | R |
| 1 | SCLK_ERR_FLAG | 0 1 | Error flag for the detection of the correct number of SCLK cycles in an SPI frame. No error. Error. | 0x0 | R |
| 0 | CRC_ERR_FLAG | 0 1 | Error flag that determines if a CRC error occurred during a register write. No error. Error. | 0x0 | R |

BURST ENABLE REGISTER

Address: 0x05, Reset: 0x00, Name: BURST_EN

The burst enable register allows the user to enable or disable burst mode. When enabled, the user can send multiple consecutive SPI commands without deasserting CS.

Table 19. Bit Descriptions for BURST_EN

| Bits | Bit Name | Settings | Description | Default | Access |
|-------|---------------|----------|---|---------|--------|
| [7:1] | Reserved | | These bits are reserved. Set these bits to 0. | 0x0 | R |
| 0 | BURST_MODE_EN | 0 1 | Burst mode enable bit. Disabled. Enabled. | 0x0 | R/W |

ROUND ROBIN ENABLE REGISTER

Address: 0x06, Reset: 0x00, Name: ROUND_ROBIN_EN

The round robin register allows the user to enable or disable round robin mode. When enabled, the user can cycle through the channels enabled in the round robin configuration register by presenting the relevant edge on the CNV pin.

Table 20. Bit Descriptions for ROUND_ROBIN_EN

| Bits | Bit Name | Settings | Description | Default | Access |
|-------|----------------|----------|---|---------|--------|
| [7:1] | Reserved | | These bits are reserved. Set these bits to 0. | 0x0 | R |
| 0 | ROUND_ROBIN_EN | 0 1 | Round robin mode enable bit. Disabled. Enabled. | 0x0 | R/W |

ROUND ROBIN CHANNEL CONFIGURATION REGISTER

Address: 0x07, Reset: 0xFF (ADGS1208), 0x0F (ADGS1209), Name: RROBIN_CHANNEL_CONFIG

The round robin channel configuration register controls which channels are included a cycle during round robin mode. During round robin mode, the channels are cycled through in ascending order.

Table 21. Bit Descriptions for RROBIN_CHANNEL_CONFIG (ADGS1208)

| Bits | Bit Name | Settings | Description | Default | Access |
|------|----------|----------|---|---------|--------|
| 7 | S8_EN | 0 1 | Enable bit for S8. S8 disabled during round robin mode. S8 enabled during round robin mode. | 0x1 | R/W |
| 6 | S7_EN | 0 1 | Enable bit for S7. S7 disabled during round robin mode. S7 enabled during round robin mode. | 0x1 | R/W |
| 5 | S6_EN | 0 1 | Enable bit for S6. S6 disabled during round robin mode. S6 enabled during round robin mode. | 0x1 | R/W |
| 4 | S5_EN | 0 1 | Enable bit for S5. S5 disabled during round robin mode. S5 enabled during round robin mode. | 0x1 | R/W |
| 3 | S4_EN | 0 1 | Enable bit for S4. S4 disabled during round robin mode. S4 enabled during round robin mode. | 0x1 | R/W |
| 2 | S3_EN | 0 1 | Enable bit for S3. S3 disabled during round robin mode. S3 enabled during round robin mode. | 0x1 | R/W |

| Bits | Bit Name | Settings | Description | Default | Access |
|------|----------|----------|---|---------|--------|
| 1 | S2_EN | 0 1 | Enable bit for S2. S2 disabled during round robin mode. S2 enabled during round robin mode. | 0x1 | R/W |
| 0 | S1_EN | 0 1 | Enable bit for S1. S1 disabled during round robin mode. S1 enabled during round robin mode. | 0x1 | R/W |

Table 22. Bit Descriptions for RROBIN_CHANNEL_CONFIG (ADGS1209)

| Bits | Bit Name | Settings | Description | Default | Access |
|-------|----------|----------|---|---------|--------|
| [7:4] | Reserved | | These bits are reserved. Set these bits to 0. | 0x0 | R |
| 3 | S4_EN | 0 1 | Enable bit for S4. S4 disabled during round robin mode. S4 enabled during round robin mode. | 0x1 | R/W |
| 2 | S3_EN | 0 1 | Enable bit for S3. S3 disabled during round robin mode. S3 enabled during round robin mode. | 0x1 | R/W |
| 1 | S2_EN | 0 1 | Enable bit for S2. S2 disabled during round robin mode. S2 enabled during round robin mode. | 0x1 | R/W |
| 0 | S1_EN | 0 1 | Enable bit for S1. S1 disabled during round robin mode. S1 enabled during round robin mode. | 0x1 | R/W |

CNV EDGE SELECT REGISTER

Address: 0x09, Reset: 0x00, Name: CNV_EDGE_SEL

The CNV edge select register allows the user to select the active edge of the CNV pin when the device is in round robin mode.

Table 23. Bit Descriptions for CNV_EDGE_SEL

| Bits | Bit Name | Settings | Description | Default | Access |
|-------|--------------|----------|--|---------|--------|
| [7:1] | Reserved | | These bits are reserved. Set these bits to 0. | 0x0 | R |
| 0 | CNV_EDGE_SEL | 0 1 | CNV active edge select bit. Falling edge of CNV is the active edge. Rising edge of CNV is the active edge. | 0x0 | R/W |

SOFTWARE RESET REGISTER

Address: 0x0B, Reset: 0x00, Name: SOFT_RESETB

Use the software reset register to perform a software reset. Consecutively, write 0xA3 followed by 0x05 to this register, and the registers of the device reset to their default state.

Table 24. Bit Descriptions for SOFT_RESETB

| Bits | Bit Name | Settings | Description | Default | Access |
|-------|-------------|----------|--|---------|--------|
| [7:0] | SOFT_RESETB | | To perform a software reset, consecutively write 0xA3 followed by 0x05 to this register. | 0x0 | R |