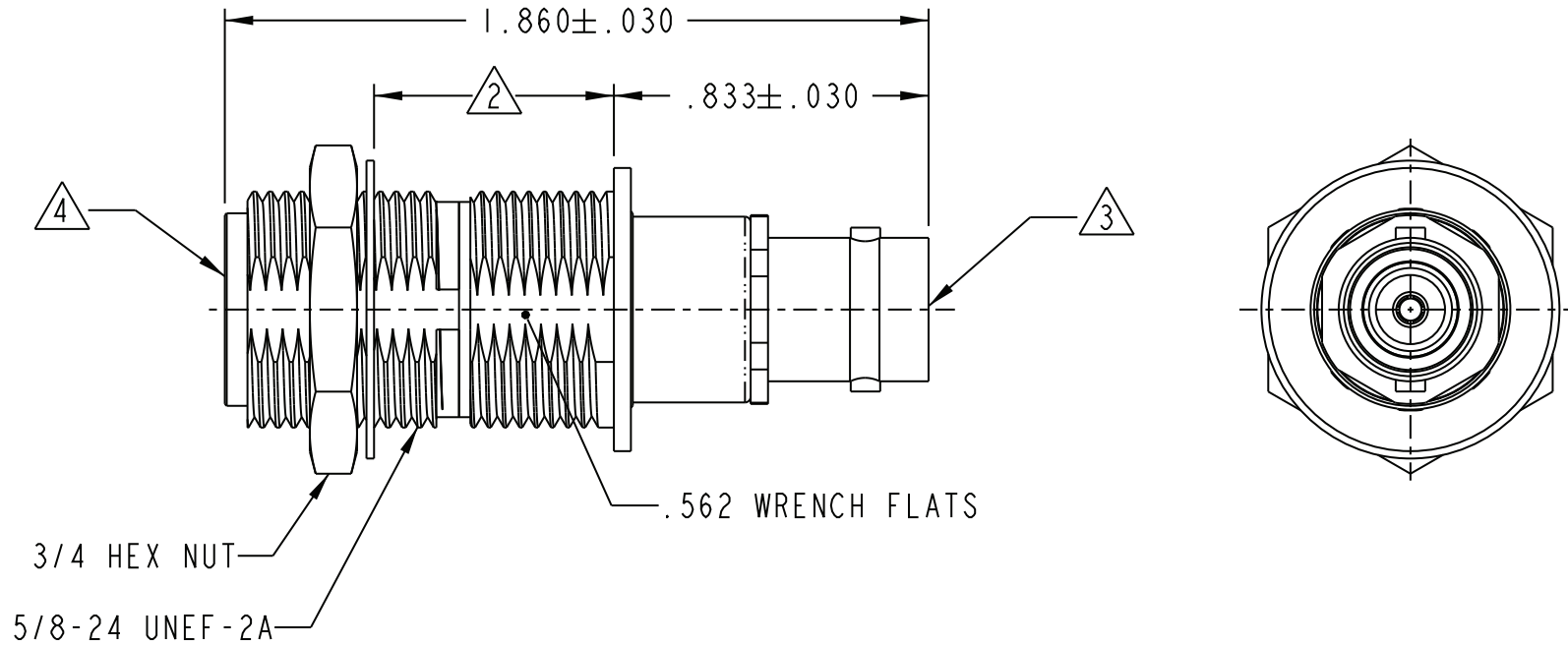


| DASH NO | MODEL NO | IMPD OHMS |
|---------|----------|-----------|
| -1 | AD195 | 50 |
| -2 | UAD195 | 75 |

DATA CONTAINED IN THIS DOCUMENT IS PROPRIETARY TO EMERSON CONNECTIVITY SOLUTIONS AND SHALL NOT BE DISCLOSED, COPIED OR USED FOR PROCUREMENT OR MANUFACTURE WITHOUT EXPRESS WRITTEN PERMISSION

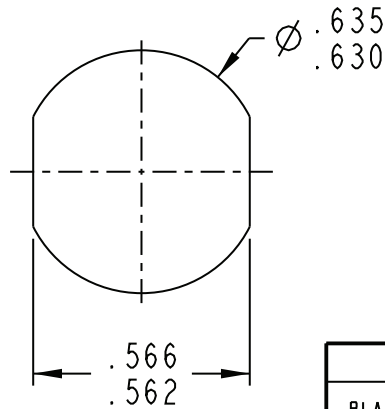
| REVISIONS | | | |
|-----------|--------------|---------|-----------|
| REV | DESCRIPTIONS | DATE | APPROVED |
| H | ECO 52570 | 8/27/10 | T. KOHLER |



3/4 HEX NUT

5/8-24 UNEF-2A

.562 WRENCH FLATS



RECOMMENDED PANEL CUTOUT

4 FEMALE TYPE N 50 AND 75 OHM INSULATED BULKHEAD JACK.

3 FEMALE 50 AND 75 OHM TYPE BNC JACK.

2 MAXIMUM PANEL THICKNESS .203

1 FINISH: TFS-1A (NICKEL).

NOTES: UNLESS OTHERWISE SPECIFIED.

INTERPRET DRAWING PER MIL-STD-100. DIMENSIONS ARE IN INCHES AND INCLUDE FINISH THICKNESS UNLESS OTHERWISE SPECIFIED.

TOL: UNLESS SPECIFIED.
 .XX ± .01
 .XXX ± .003
 .XXXX ± .0010
 ANGLE ± 1° 00'
 CRITICAL



Cinch Connectivity Solutions
 299 Johnson Ave. Ste. 100
 Waseca, MN 56093
 1-800-247-8256

DRN B. RYAN 7-15-11

CHK T. KOHLER 7-16-11

QUALITY

MANUF

APPROVED

PROJ TITLE NO. 105-0186

SURFACE AREA

MATERIAL:

FINISH:

1

DO NOT SCALE DWG

SCALE 2/1

DATE 5/25/11

SHEET 1 OF 2

TITLE:

AD195/UAD195

SIZE CAGE CODE DRAWING NO. REV.

A 14949 105-0186 H

DATE 5/25/11

SHEET 1 OF 2