

### SC Male Plug to SC Female Jack

#### Model Number

ADT-2832-MF-SCO-02

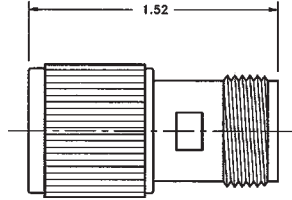
#### SPECIFICATIONS

**Frequency:** DC - 11.0 GHz

**VSWR:** 1.08 @ DC - 4.0 GHz  
1.10 @ 4.0 - 8.0 GHz  
1.15 @ 8.0 - 11.0

**Impedance:** 50 Ohms

**Finish:** Passivated Stainless Steel



### SC Female Jack to SC Female Jack

#### Model Number

ADT-2833-FF-SCO-02

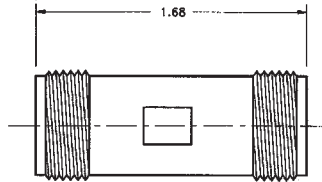
#### SPECIFICATIONS

**Frequency:** DC - 11.0 GHz

**VSWR:** 1.08 @ DC - 4.0 GHz  
1.10 @ 4.0 - 8.0 GHz  
1.15 @ 8.0 - 11.0 GHz

**Impedance:** 50 Ohms

**Finish:** Passivated Stainless Steel



### SC Male Plug to SC Male Plug

#### Model Number

ADT-2834-MM-SCO-02

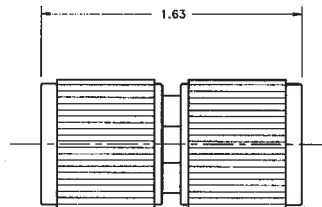
#### SPECIFICATIONS

**Frequency:** DC - 11.0 GHz

**VSWR:** 1.08 @ DC - 4.0 GHz  
1.10 @ 4.0 - 8.0 GHz  
1.15 @ 8.0 - 11.0 GHz

**Impedance:** 50 Ohms

**Finish:** Passivated Stainless Steel



### SC Female Jack to SC Female Jack - Flange Mount

#### Model Number

ADT-2835-FF-SCO-02

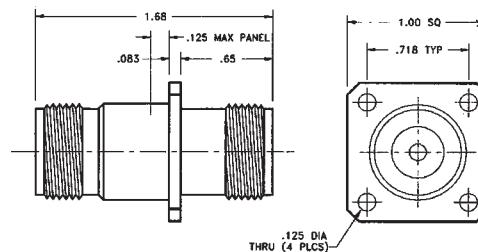
#### SPECIFICATIONS

**Frequency:** DC - 11.0 GHz

**VSWR:** 1.08 @ DC - 4.0 GHz  
1.10 @ 4.0 - 8.0 GHz  
1.15 @ 8.0 - 11.0 GHz

**Impedance:** 50 Ohms

**Finish:** Passivated Stainless Steel



Note: Also available in bulkhead mount as ADT-2836-FF-SCO-02