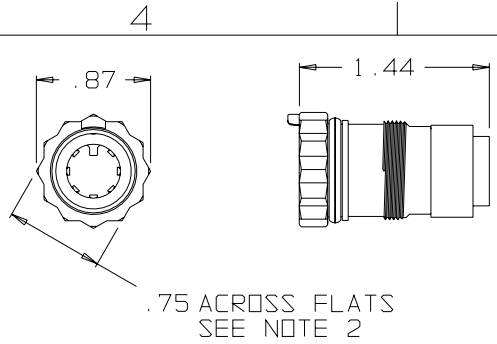
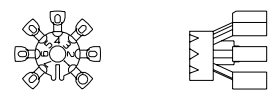


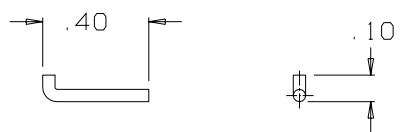
B AJ-107AS-1



AJ-107-29
JACK BODY ASSEMBLY
(1 REQ'D)

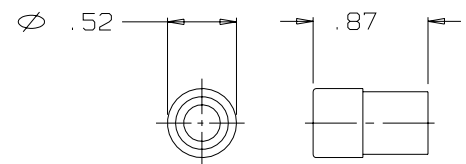
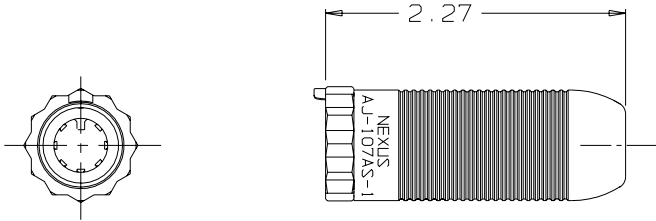


CABLE HOLDER
AJ-107-3AS-1
(1 REQ'D)

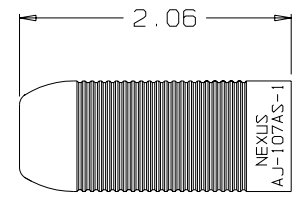


AP-107-9
RETAINER PIN
SCALE 2:1
(1 REQ'D)

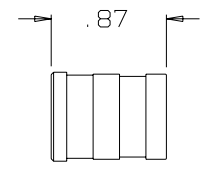
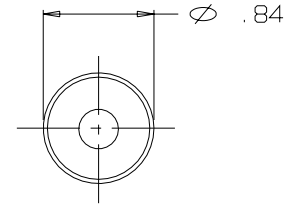
NOTES:
1) THIS PART MATES WITH AP-107 SEVEN CONDUCTOR WATERPROOF AUDIO PLUG.
2) CONFIGURATION IS FOR 3/4"-12 PT SOCKET WRENCH



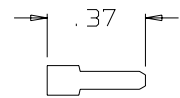
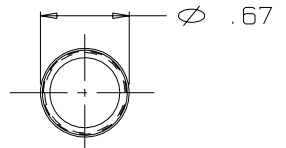
AP-107-45
Same as AP-107-27 except uses AP-116-18 (.228" ID) instead of AP-116-8 (.250" ID)



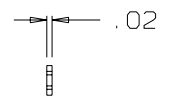
AJ-107-15AS-1
SHELL
(1 REQ'D)



AP-107-4
SLEEVE
(1 REQ'D)



AP-107-25
SHIM
SCALE 2:1
(1 REQ'D)



THIS DOCUMENT CONTAINS PROPRIETARY INFORMATION OF NEXUS, INCORPORATED AND SUCH INFORMATION MAY NOT BE DISCLOSED TO OTHERS FOR ANY PURPOSE OR USED FOR ANY PURPOSE WITHOUT THE WRITTEN CONSENT OF NEXUS.

DWN. BY EWT	DATE 2/11/04	MATERIAL SEE FIELD OF DRAWING	
CHECKED BY	DATE	FINISH N/A	
APPR. BY	DATE	WEIGHT —	SCALE 1:1
UNLESS OTHERWISE SPECIFIED DIMENSIONS ARE IN INCHES TOLERANCES ON .XX .XXX ANGLES — ±.003 ±.5°		TITLE SEVEN CONDUCTOR WATERPROOF AUDIO JACK	
		DO NOT SCALE DWG.	SHEET 1 OF 1
LET.	REVISION	CN #	DATE
CHK.			

NEXUS
STAMFORD, CONN

SIZE **B**

AJ-107AS-1S