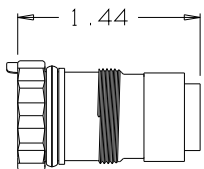
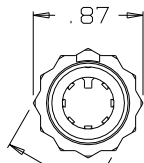


**B** AJ-107AS-SP

NOTES:

- 1) THIS PART MATES WITH AP-107 SEVEN CONDUCTOR WATERPROOF AUDIO PLUG.
- 2) CONFIGURATION IS FOR 3/4"-12 PT SOCKET WRENCH

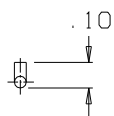
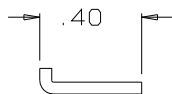


.75 ACROSS FLATS  
SEE NOTE 2

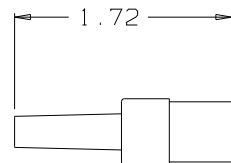
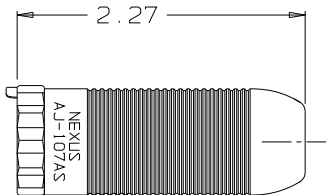
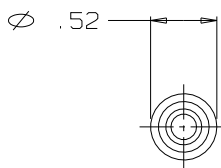
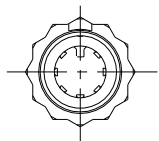
AJ-107-29  
JACK BODY ASSEMBLY  
(1 REQ'D)



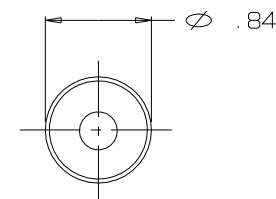
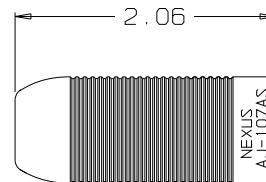
CABLE HOLDER  
AJ-107-3AS  
(1 REQ'D)



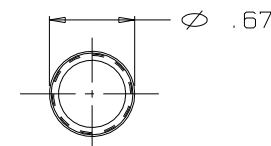
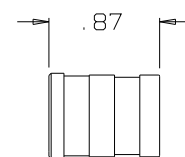
AP-107-9  
RETAINER PIN  
SCALE 2:1  
(1 REQ'D)



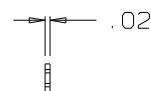
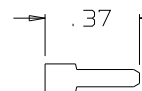
AP-107-31  
CABLE SEAL ASSEMBLY  
(1 REQ'D)



AJ-107-15AS  
SHELL  
(1 REQ'D)



AP-107-4  
SLEEVE  
(1 REQ'D)



AP-107-25  
SHIM  
SCALE 2:1  
(1 REQ'D)

THIS DOCUMENT CONTAINS PROPRIETARY INFORMATION OF NEXUS, INCORPORATED AND SUCH INFORMATION MAY NOT BE DISCLOSED TO OTHERS FOR ANY PURPOSE OR USED FOR ANY PURPOSE WITHOUT THE WRITTEN CONSENT OF NEXUS.

LET.	REVISION	CN #	DATE	CHK.

DWN. BY	EWT	DATE	01/19/09
CHECKED BY		DATE	
APPR. BY		DATE	
UNLESS OTHERWISE SPECIFIED DIMENSIONS ARE IN INCHES			
TOLERANCES ON		ANGLES	
.XX	.XXX	±.5°	
		±.003	

MATERIAL	SEE FIELD OF DRAWING		
FINISH	N/A		
WEIGHT		SCALE	1:1
TITLE			
<b>SEVEN CONDUCTOR WATERPROOF AUDIO JACK</b>			
DO NOT SCALE DWG.	SHEET 1 OF 1		

**NEXUS**  
STAMFORD, CONN

SIZE **B** DWG. NO. **AJ-107AS-SP**