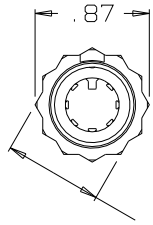


B AJ-107AS

NOTES:
 1) THIS PART MATES WITH AP-107 SEVEN CONDUCTOR WATERPROOF AUDIO PLUG.
 2) CONFIGURATION IS FOR 3/4"-12 PT SOCKET WRENCH

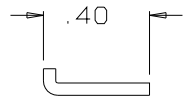


.75 ACROSS FLATS
 SEE NOTE 2

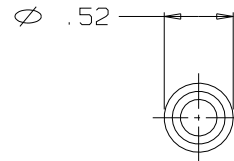
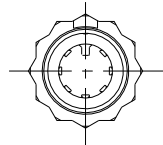
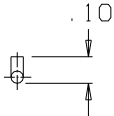
AJ-107-29
 JACK BODY ASSEMBLY
 (1 REQ'D)



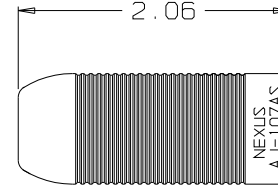
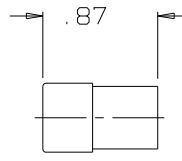
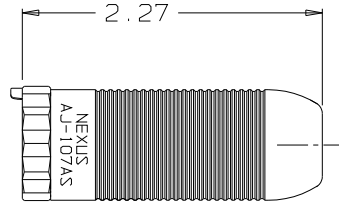
CABLE HOLDER
 AJ-107-3AS
 (1 REQ'D)



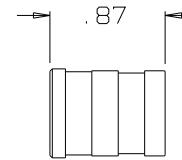
AP-107-9
 RETAINER PIN
 SCALE 2:1
 (1 REQ'D)



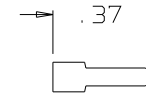
AP-107-27
 CABLE SEAL ASSEMBLY
 (1 REQ'D)



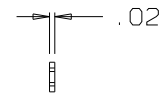
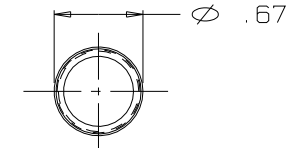
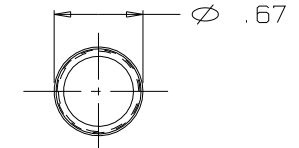
AJ-107-15AS
 SHELL
 (1 REQ'D)



AP-107-4
 SLEEVE
 (1 REQ'D)



AP-107-25
 SHIM
 SCALE 2:1
 (1 REQ'D)



THIS DOCUMENT CONTAINS PROPRIETARY INFORMATION OF NEXUS, INCORPORATED AND SUCH INFORMATION MAY NOT BE DISCLOSED TO OTHERS FOR ANY PURPOSE OR USED FOR ANY PURPOSE WITHOUT THE WRITTEN CONSENT OF NEXUS.

DWN. BY	EWT	DATE	2/11/04	MATERIAL	SEE FIELD OF DRAWING
CHECKED BY		DATE		FINISH	N/A
APPR. BY		DATE		WEIGHT	—
UNLESS OTHERWISE SPECIFIED DIMENSIONS ARE IN INCHES TOLERANCES ON .XX .XXX ANGLES — ±.003 ±.5°				SCALE	1:1
				TITLE	SEVEN CONDUCTOR WATERPROOF AUDIO JACK
LET.	REVISION	CN #	DATE	CHK.	DD NOT SCALE DWG.
					SHEET 1 OF 1
				SIZE	B
				DWG. NO.	AJ-107AS

LET.	REVISION	CN #	DATE	CHK.
------	----------	------	------	------