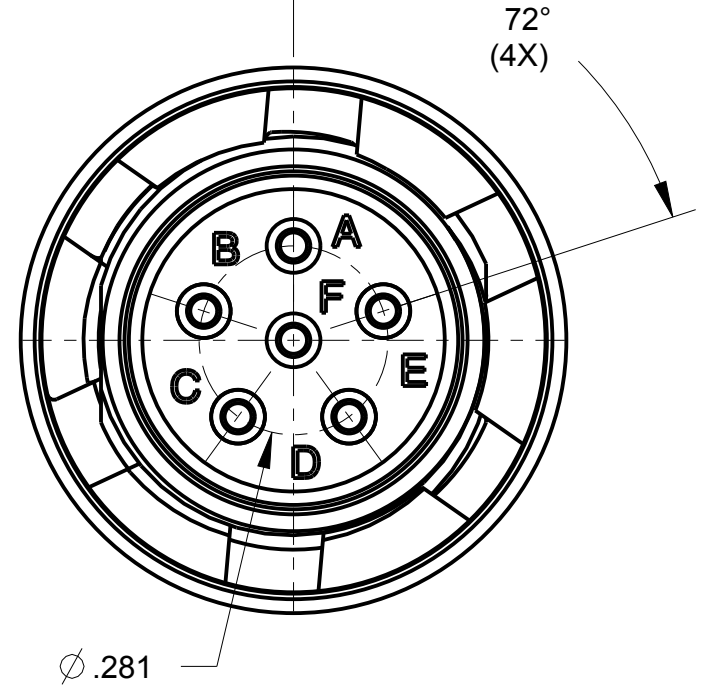
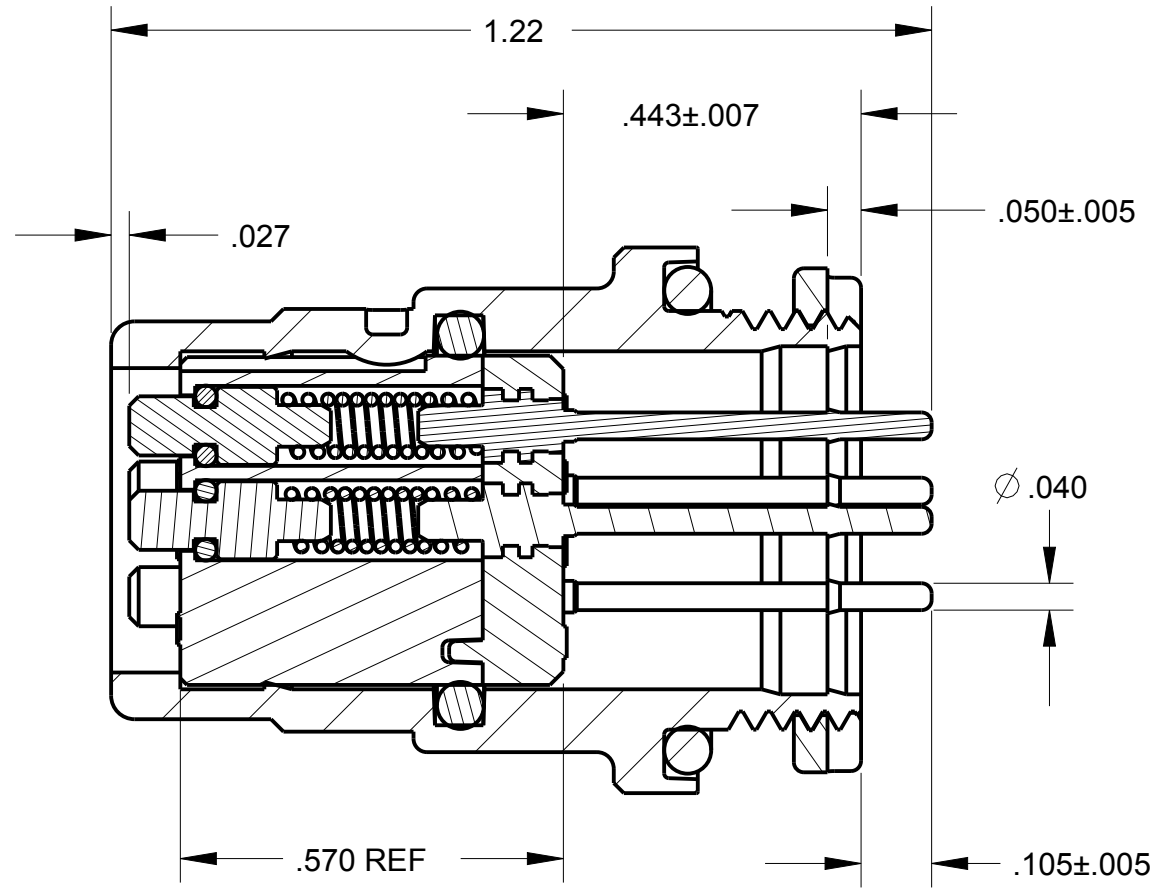
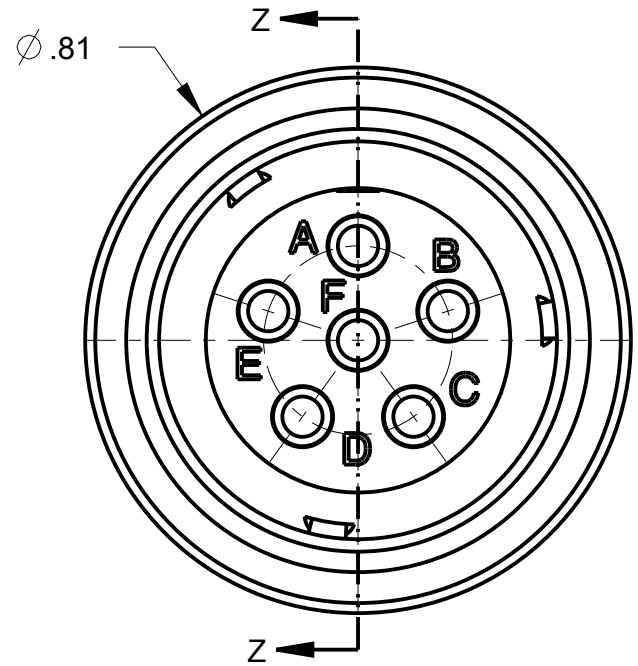
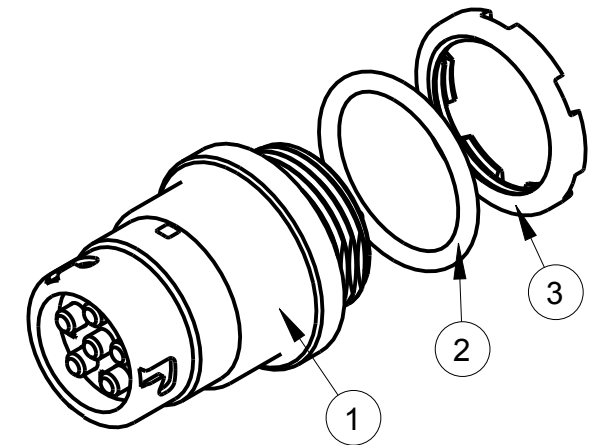


| ITEM # | PART # | QTY | DESCRIPTION |
|--------|-------------|-----|-------------------|
| 1 | AJ-146PC-37 | 1 | JACK 6 COND PC-PM |
| 2 | AJ-146PC-31 | 1 | O-RING |
| 3 | AJ-146PC-33 | 1 | NUT PM |

B AJ-146PC



- NOTES:
- CONNECTOR MUST BE SHIPPED WITH SUITABLE MEANS TO PROTECT PC TAILS.
 - AIR PRESSURE TEST AT 28.4 PSI PER PARA #3.6.2, CONTACT RESISTANCE TEST PER PARA #3.5.3 & SAMPLE SIZES PER PARA #4.6.3.1 OF MIL-DTL-55116. TEST DATA TO BE SHIPPED WITH PARTS
 - 2 CONNECTORS MUST PASS WATER IMMERSION TEST PER MIL-STD-510F, METHOD 512.4 TO A DEPTH OF 20 METERS. TEST DATA TO BE SHIPPED WITH PARTS

THIS DOCUMENT CONTAINS PROPRIETARY INFORMATION OF NEXUS, INCORPORATED AND SUCH INFORMATION MAY NOT BE DISCLOSED TO OTHERS FOR ANY PURPOSE OR USED FOR ANY PURPOSE WITHOUT THE WRITTEN CONSENT OF NEXUS.

| LET. | REVISION | CN # | DATE | CHK. |
|------|-------------|------|-----------|------|
| A | NEW RELEASE | | 9/22 2011 | HR |

| | | | | | |
|---|----|------|-----------|--|-----------------|
| DWN.BY | HR | DATE | Sep-13-11 | MATERIAL | |
| CHECKED BY | | DATE | | FINISH | |
| APPR.BY | | DATE | | WEIGHT | SCALE = 1.00 :1 |
| UNLESS OTHERWISE SPECIFIED: DIMENSIONS ARE IN INCHES &/OR [mm] | | | | NEXUS STAMFORD, CONN | |
| TOLERANCES: | | | | | |
| DECIMAL: .XX[X.X] .XXX[X.XX] | | | | CONNECTOR SUBASSEMBLY 6 PIN PCB TAILS | |
| ± .01[0.3] ± .003[0.08] | | | | | |
| FRACTION: X/X | | | | DO NOT SCALE DWG. | SHEET 1 OF 1 |
| ANGLES: X ± .5° | | | | SIZE | DWG. NO. |
| | | | | B | AJ-146PC |