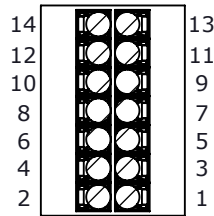
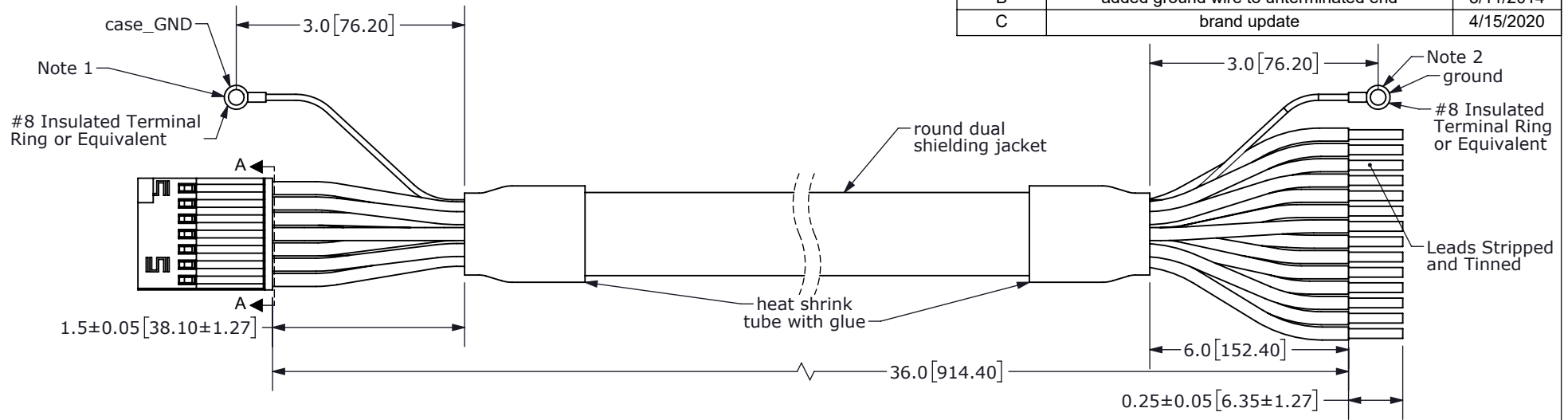
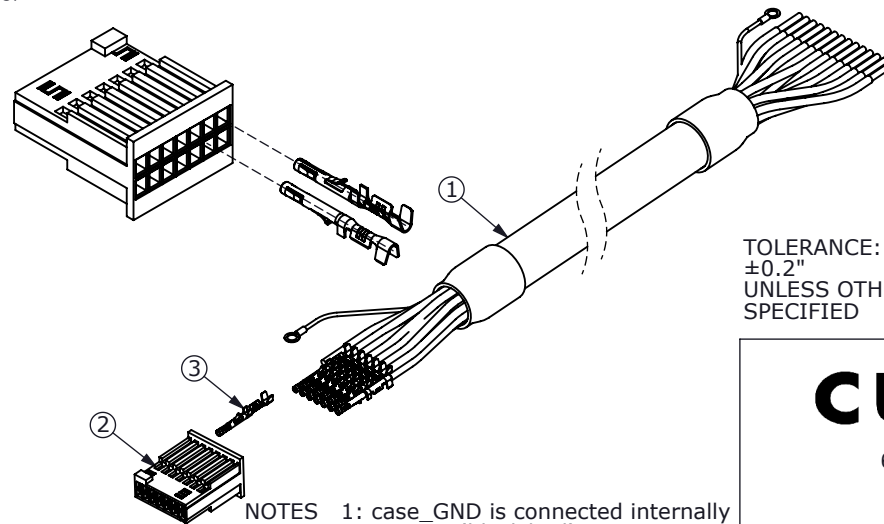


| REV. | DESCRIPTION | DATE |
|------|---------------------------------------|-----------|
| A | initial release | 7/29/2013 |
| B | added ground wire to unterminated end | 3/11/2014 |
| C | brand update | 4/15/2020 |



SECTION A-A
SCALE 3 : 1
(Back of Connector Housing)



TOLERANCE:
±0.2"
UNLESS OTHERWISE
SPECIFIED



| Connector Pinout | | | | |
|------------------|----------|----------|---------|--------|
| # | Function | | Color | |
| | AMT203 | AMT303 | Primary | Stripe |
| 1 | UNUSED | | Blue | Red |
| 2 | CSB | Zero Set | Green | Red |
| 3 | MISO | U+ | Brown | Black |
| 4 | GND | | Black | Red |
| 5 | SCK | W+ | Orange | Black |
| 6 | +5V | | Red | Black |
| 7 | MOSI | V+ | Red | White |
| 8 | B+ | | Green | Black |
| 9 | UNUSED | B- | Black | Green |
| 10 | A+ | | White | Black |
| 11 | UNUSED | A- | Black | White |
| 12 | Z+ | | Blue | Black |
| 13 | UNUSED | Z- | Black | Blue |
| 14 | UNUSED | COMM | Yellow | Black |

NOTES 1: case_GND is connected internally to GND (black/red)
2: ground is connected internally to cable shielding
3: To enable commutation output of AMT303, tie COMM to GND.

| | Part | QTY | Part# |
|---|------------|-----|------------------------|
| 1 | Cable | 1 | 3M 3600B/20 |
| 2 | Connector | 1 | Samtec ISDF-07-D |
| 3 | Crimp Pins | 14 | Samtec CC03L-2830-01-G |

CUI DEVICES

6405 SW Rosewood St, Suite C
Lake Oswego, OR 97035
Phone: 877-323-3576
Website: www.cuidevices.com

| | | | |
|-----------|-----------------|--------------|---------|
| ITEM NO: | 977-7015R | REV: | C |
| PART NO: | AMT-14C-0-036-1 | UNITS: | INCHMM] |
| DRAWN BY: | RDS | APPROVED BY: | |
| | | SCALE: | 2:1 |