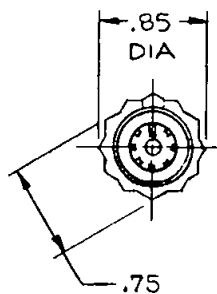
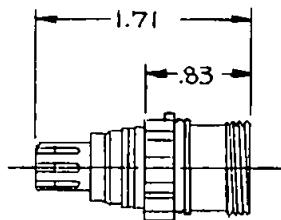


B AP-107A



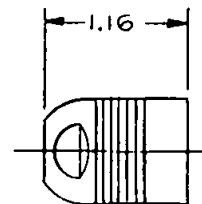
ACROSS FLATS
(SEE NOTE 2)

AP-107-28
PLUG, BODY ASSEMBLY

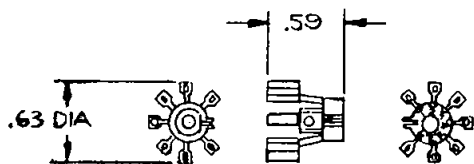
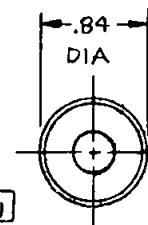


NOTES:

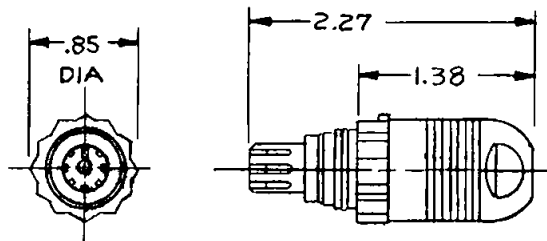
1. THIS PART MATES WITH AJ-107A, SEVEN CONDUCTOR WATERPROOF AUDIO JACK.
2. CONFIGURATION IS FOR 3/4"-12 PT SOCKET WRENCH



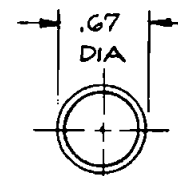
AP-107-10A
SHELL



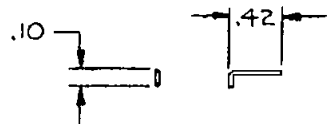
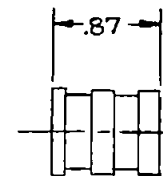
A AP-107-3B
CABLE HOLDER PLUG



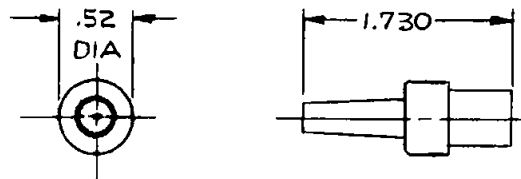
AP-107-31
CABLE SEAL ASSEMBLY



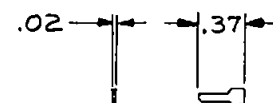
AP-107-4
SLEEVE



AP-107-9
RETAINER PIN



AP-107-25
SHIM



LET.	REVISION	DATE	CHK.
B	1) WAS AP-107-10A2	4-22-91	MS
A	VIEWS CHANGED	8-12-88	

OWN. BY IDH	DATE 3-2-88	MATERIAL	
CHECKED BY JK	4-21-91	FINISH	
APPR. BY		WEIGHT	SCALE 1:1
UNLESS OTHERWISE SPECIFIED DIMENSIONS ARE IN INCHES TOLERANCES ON FRACTIONS DECIMALS ANGLES		TITLE SEVEN CONDUCTOR WATERPROOF AUDIO PLUG	
DO NOT SCALE DWG.		SHEET	OF
		NEXUS STAMFORD, CONN.	
		SIZE	DWG. NO.
		B	AP-107A