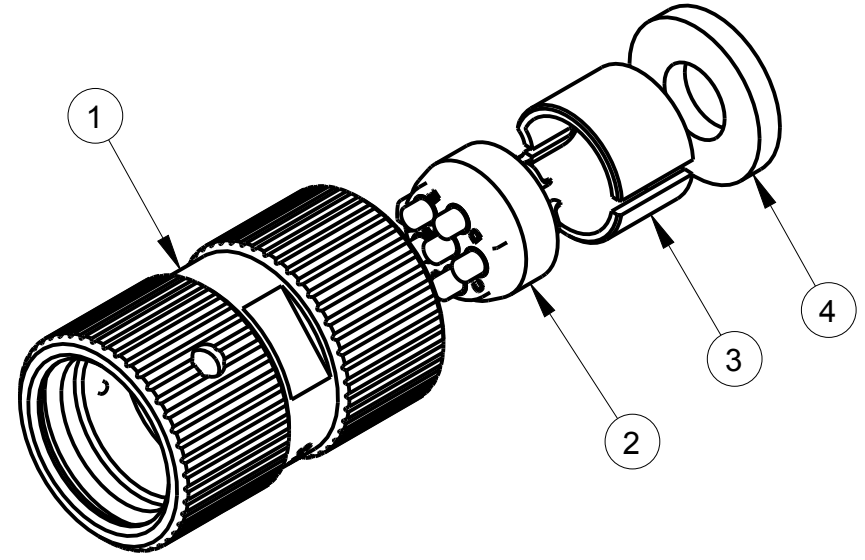
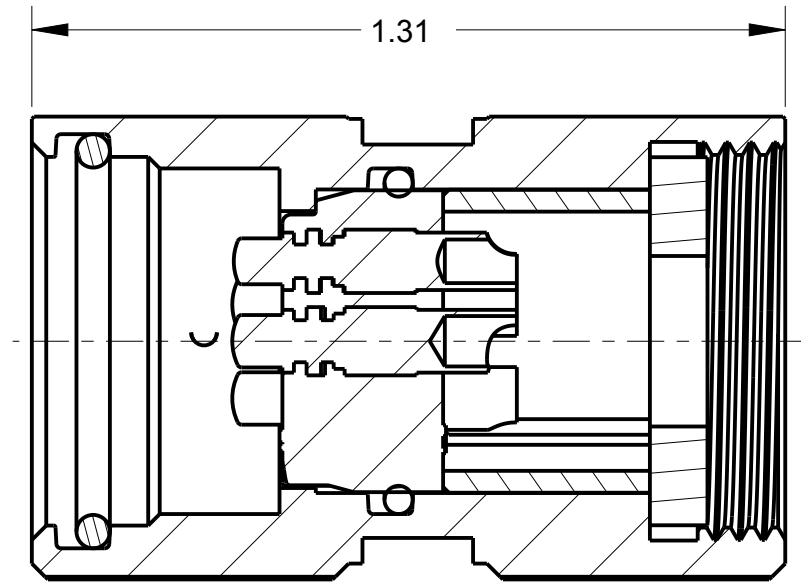
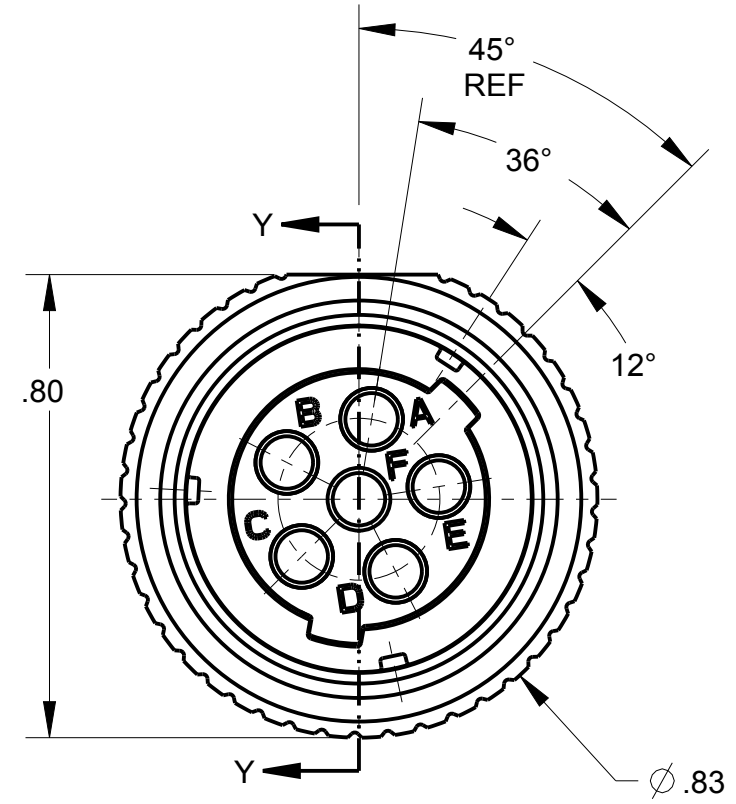


ITEM #	PART #	QTY	DESCRIPTION	MATERIAL
1	AP-145-1M	1	SHELL ASS'Y	303 SS & NEOPRENE
2	AP-146-6	1	INSERT ASS'Y	DIALLYPHTHALATE, TYPE SDGF & GOLD PLATED BRASS
3	AP-105-5	1	STRAIN RELIEF	NYLON
4	AP-116-3	1	WASHER	RUBBER

**B** AP-146MNB-CP



NOTES:  
 1) UNLESS OTHERWISE SPECIFIED, THIS CONNECTOR MEETS ALL GENERAL REQUIREMENTS & SPECIFICATIONS OF MIL-C-55116  
 2) MATES WITH U-283/U PANEL MOUNT CONNECTOR & U-328/U INLINE CONNECTOR



SECTION Y-Y  
SCALE 3.000

THIS DOCUMENT CONTAINS PROPRIETARY INFORMATION OF NEXUS, INCORPORATED AND SUCH INFORMATION MAY NOT BE DISCLOSED TO OTHERS FOR ANY PURPOSE OR USED FOR ANY PURPOSE WITHOUT THE WRITTEN CONSENT OF NEXUS.

LET.	REVISION	CN #	DATE	CHK.
B	DEL: .35(C-2), ADD: 1.31	235	3/21 2017	HR
A	NEW RELEASE		10/6 2016	HR

DWN.BY	HR	DATE	10/6/16	MATERIAL
CHECKED BY		DATE		FINISH
APPR.BY		DATE		WEIGHT —
UNLESS OTHERWISE SPECIFIED: DIMENSIONS ARE IN INCHES &/OR [mm]				SCALE = 1.00 :1
TOLERANCES:				TITLE
DECIMAL: .XX[X.X] .XXX[X.XX]				AUDIO PLUG
± .01[0.3] ± .005[0.13]				
FRACTION: X/X				DO NOT SCALE DWG.
± 1/64				SHEET 1 OF 1
ANGLES: X				<b>NEXUS</b> STAMFORD, CONN
± .5°				
				SIZE
				DWG. NO.
				<b>B</b> AP-146MNB-CP