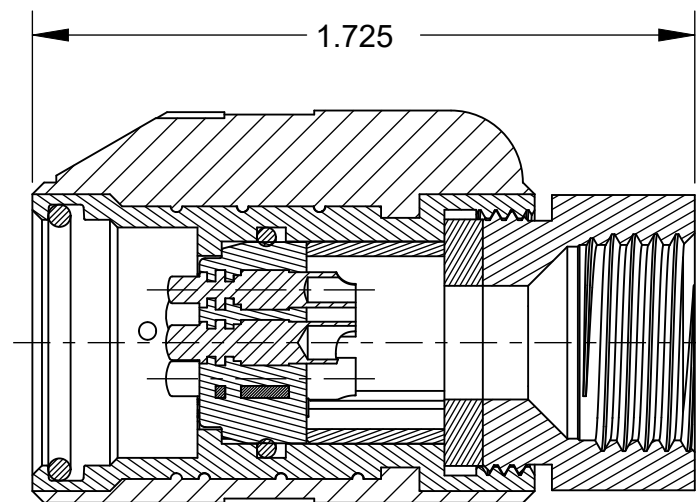
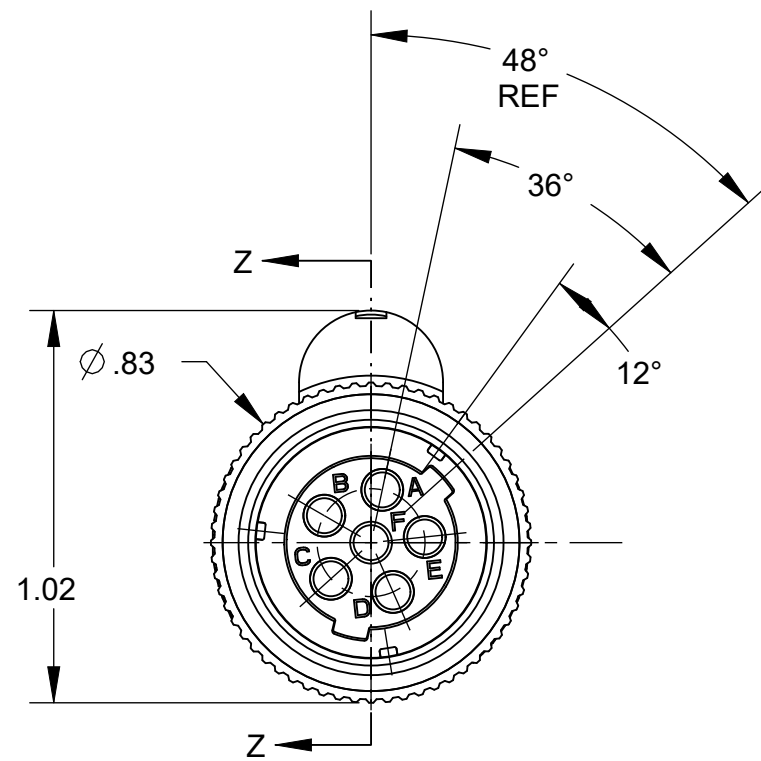
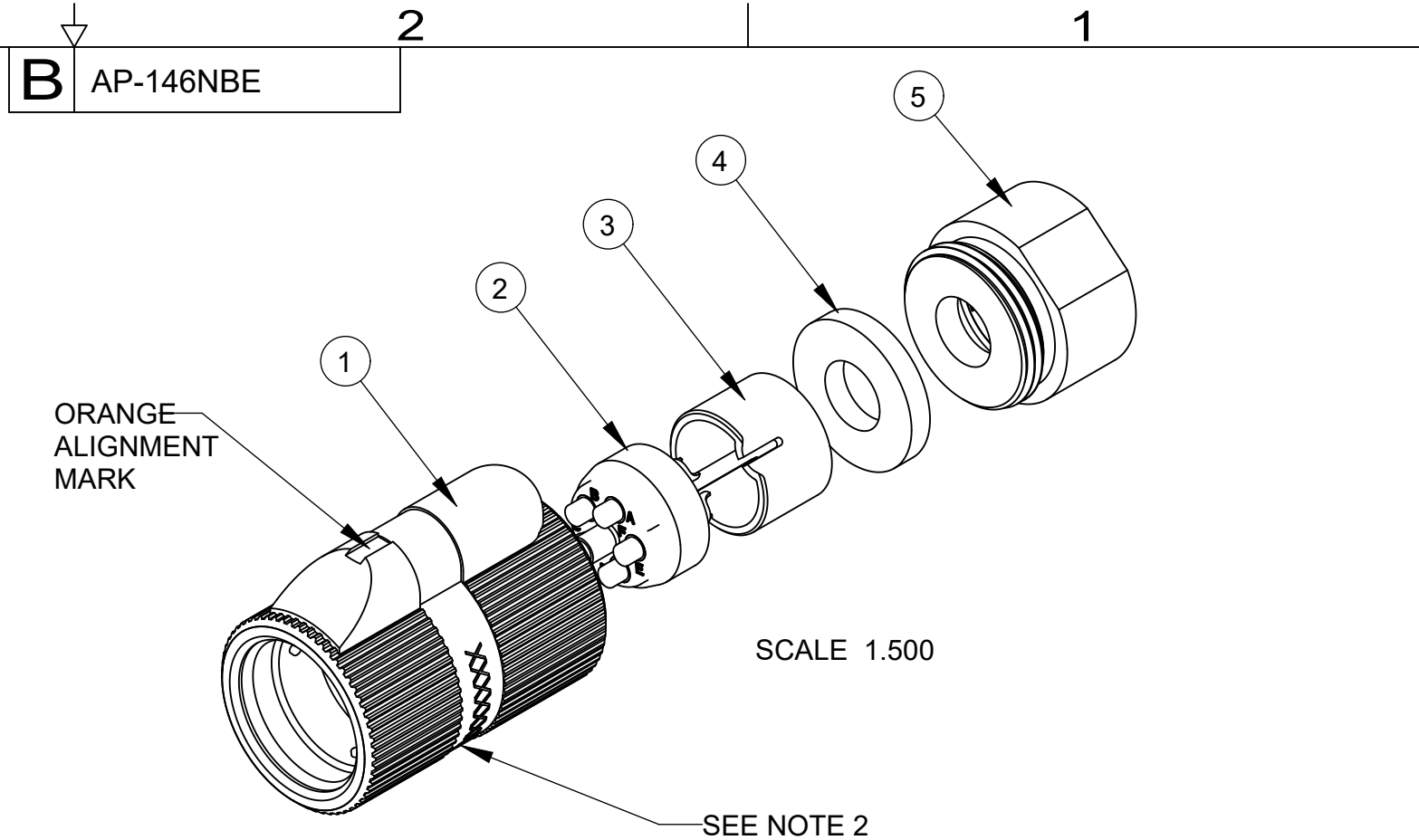


ITEM #	PART #	QTY	DESCRIPTION	MATERIAL
1	AP-176-1	1	SHELL ASSY	GLASS FILLED NYLON & 303 SS
2	AP-146-6	1	INSERT ASSY	DIALYLPHTHALATE, TYPE SDGF & GOLD PLATED BRASS
3	AP-105-5	1	STRAIN RELIEF	NYLON
4	AP-116-3	1	WASHER	RUBBER
5	AP-116-7	1	NUT ADAPTER	ALUMINUM, ANODIZED



THIS DOCUMENT CONTAINS PROPRIETARY INFORMATION OF NEXUS, INCORPORATED AND SUCH INFORMATION MAY NOT BE DISCLOSED TO OTHERS FOR ANY PURPOSE OR USED FOR ANY PURPOSE WITHOUT THE WRITTEN CONSENT OF NEXUS.

NOTES:
 1) UNLESS OTHERWISE SPECIFIED, CONNECTOR MEETS ALL GENERAL REQUIREMENTS & SPECIFICATIONS OF MIL-C-55116
 2) MARK MANUFACTURER'S NAME AND CAGE CODE LOCATED APPROXIMATELY AS SHOWN

LET.	REVISION	CN #	DATE	CHK.
A	NEW RELEASE		6/11 2018	SPL

DWN.BY	SPL	DATE	Jun-11-18	MATERIAL
CHECKED BY		DATE		FINISH
APPR.BY		DATE		WEIGHT
UNLESS OTHERWISE SPECIFIED DIMENSIONS ARE IN INCHES TOLERANCES ON .XX .XXX ANGLES ±.003 ±.5°				SCALE = 2.00 : 1
TITLE				NEXUS STAMFORD, CONN
AUDIO PLUG				
DO NOT SCALE DWG.				SHEET 1 OF 1
				SIZE
				DWG. NO.
				B AP-146NBE