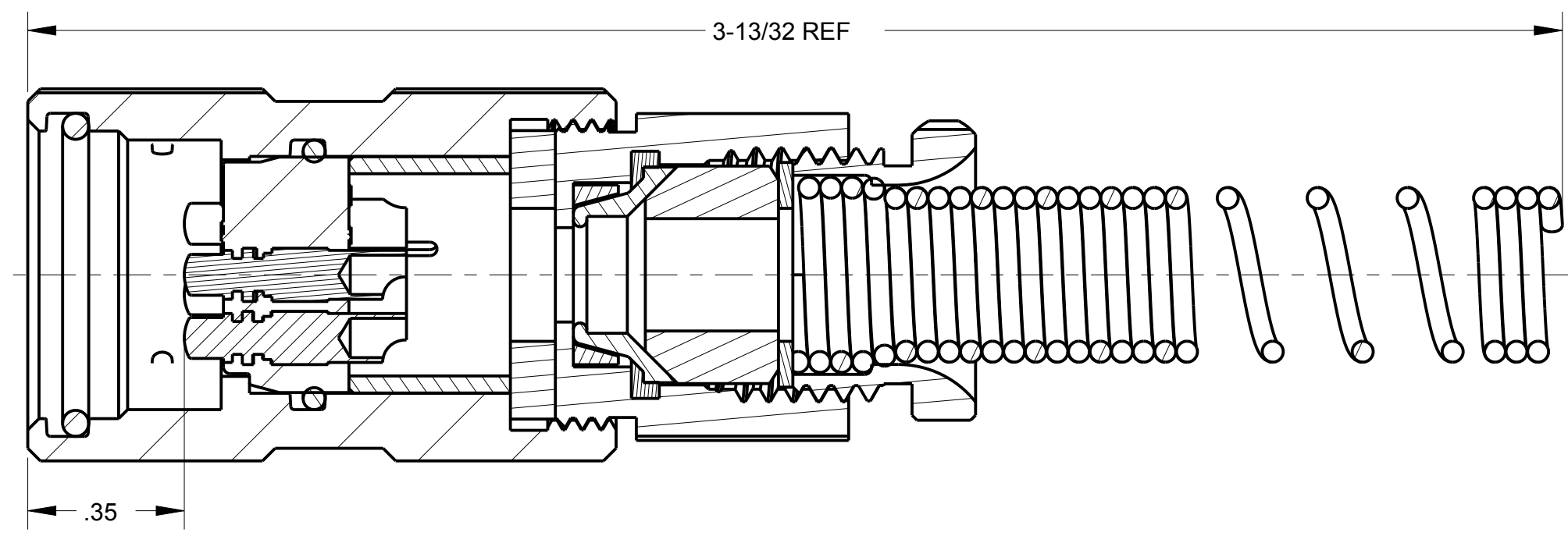
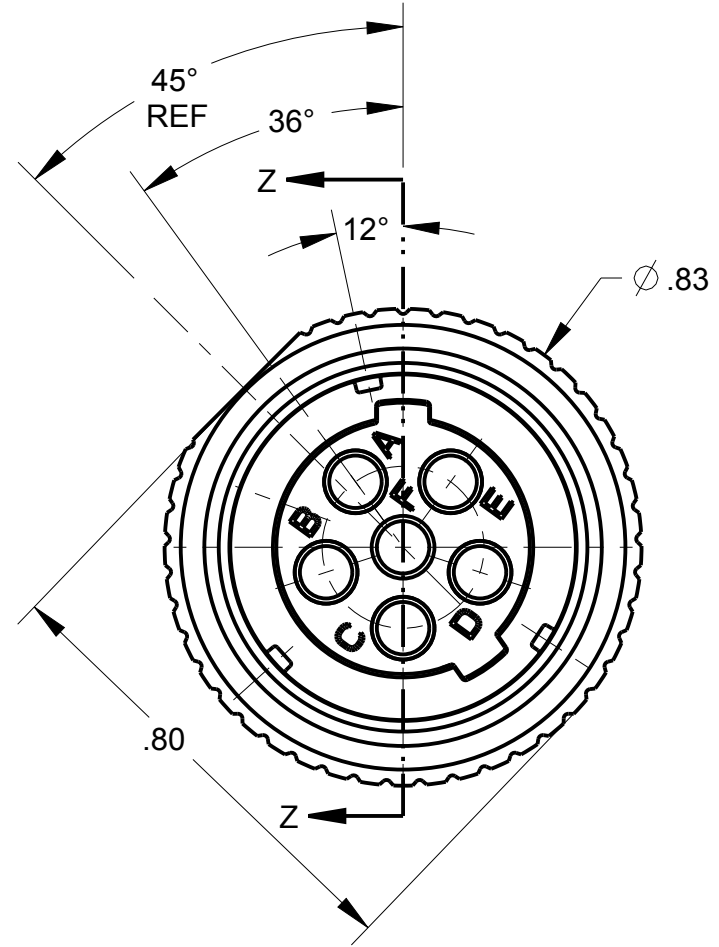
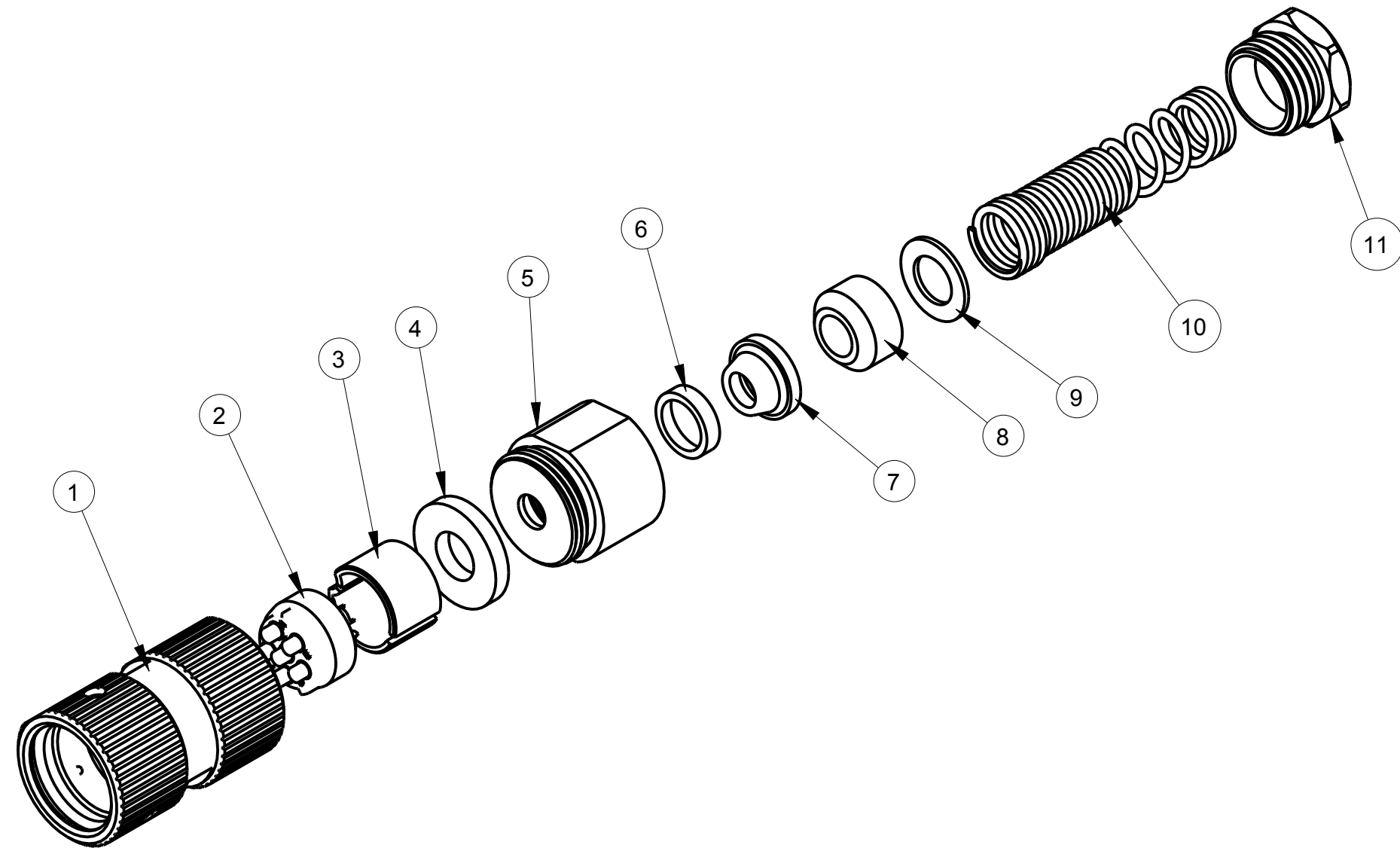


| ITEM # | PART # | QTY | DESCRIPTION | MATERIAL |
|--------|--------------|-----|---------------------|---|
| 1 | AP-145-1M | 1 | SHELL ASS'Y | 303 STAINLESS STEEL |
| 2 | AP-146-6 | 1 | INSERT ASS'Y | DIALYPHTHALATE, TYPE SDGF & GOLD PLATED BRASS |
| 3 | AP-105-5 | 1 | STRAIN RELIEF | NYLON |
| 4 | AP-116-3 | 1 | WASHER | RUBBER |
| 5 | AP-136-8 | 1 | NUT ADAPTER | BRASS, BLACK CHROME |
| 6 | AP-136-6 | 1 | CLAMP SHIELD, OUTER | NICKEL PLATED BRASS |
| 7 | AP-136-5 | 1 | CLAMP SHIELD INNER | NICKEL PLATED BRASS |
| 8 | SEE TABLE #1 | 1 | BUSHING | RUBBER |
| 9 | SEE TABLE #1 | 1 | WASHER | STAINLESS STEEL |
| 10 | SEE TABLE #1 | 1 | SPRING | 302 STAINLESS STEEL |
| 11 | AP-116-6 | 1 | STUD | ANODIZED ALUMINUM ALLOY |

C AP-176M-CP

| TABLE #1 | | | | |
|------------|---------------|-----------|-----------|-----------|
| PART # | Ø CABLE | BUSHING | WASHER | SPRING |
| AP-176M-01 | Ø .165 ± .010 | AP-116-17 | AP-116-2 | AP-116-4 |
| AP-176M-02 | Ø .228 ± .010 | AP-116-18 | AP-116-2 | AP-116-4 |
| AP-176M | Ø .250 ± .010 | AP-116-8 | AP-116-2 | AP-116-4 |
| AP-176M-04 | Ø .290 ± .010 | AP-116-19 | AP-116-2 | AP-116-4 |
| AP-176M-05 | Ø .320 ± .010 | AP-116-20 | AP-116-22 | AP-116-21 |

NOTES:
1) UNLESS OTHERWISE SPECIFIED, CONNECTOR MEETS ALL GENERAL REQUIREMENTS & SPECIFICATIONS OF MIL-C-55116



SECTION Z-Z

THIS DOCUMENT CONTAINS PROPRIETARY INFORMATION OF NEXUS, INCORPORATED AND SUCH INFORMATION MAY NOT BE DISCLOSED TO OTHERS FOR ANY PURPOSE OR USED FOR ANY PURPOSE WITHOUT THE WRITTEN CONSENT OF NEXUS.

| | | | | | | | | | |
|-----|--|------|-----------|-----|---|---------------------|---|--------------------------------|-----|
| E | CHG: ITEM #5 MAT'L | 202 | 8/9 2014 | HR | DWN.BY GPH | DATE 2/24/10 | MATERIAL | | |
| D | ADD P/Ns TO P/L | 101 | 2/25 2011 | HR | CHECKED BY GPH | DATE 2/24/10 | FINISH | | |
| C | REMOVE "NEXUS" FROM VIEW | 059 | 4/21 2010 | GPH | APPR.BY GPH | DATE 2/24/10 | WEIGHT _____ SCALE = 1.00 :1 | | |
| B | B1) WAS NUT ADAPTER AP-136-4 B2) WAS SHELL INSERT KNURLED AP-136-3M B3) WAS O-RING AP-105-3 B4) WAS O-RING AP-105-2 | 058 | 4/13 2010 | GPH | UNLESS OTHERWISE SPECIFIED DIMENSIONS ARE IN INCHES & OR (mm) | | TITLE | | |
| A | RELEASED FOR PRODUCTION | 048 | 2/24 2010 | GPH | TOLERANCES: DECIMAL: ±.XX(X.X) ±.XXX(X.XX) ±.XXXX(X.XXX) ±.0X(0.X) ±.00X(0.0X) ±.000(X.0XX) | | NEXUS STAMFORD, CONN SIZE DWG. NO. C AP-176M-CP | | |
| F | DEL: 10° ; 33° ; 2.1± .1, ADD: 12° ; 36° ; 45° REF | 226 | 8/31 2015 | HR | FRACTION: ±XXX ±.XXX | ANGLES: ±X° ±.X° | | DO NOT SCALE DWG. SHEET 1 OF 1 | |
| LET | REVISION | CN # | DATE | CHK | LET | REVISION | CN # | DATE | CHK |