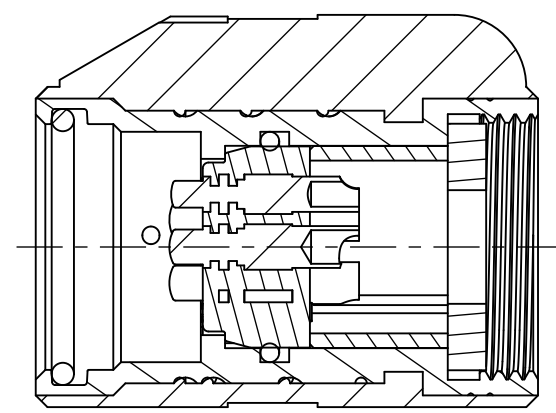
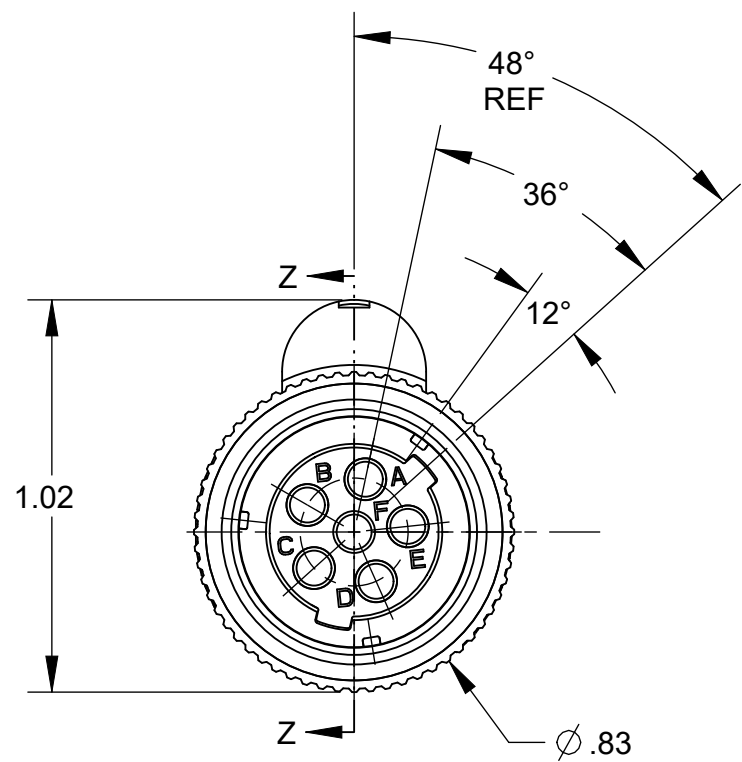
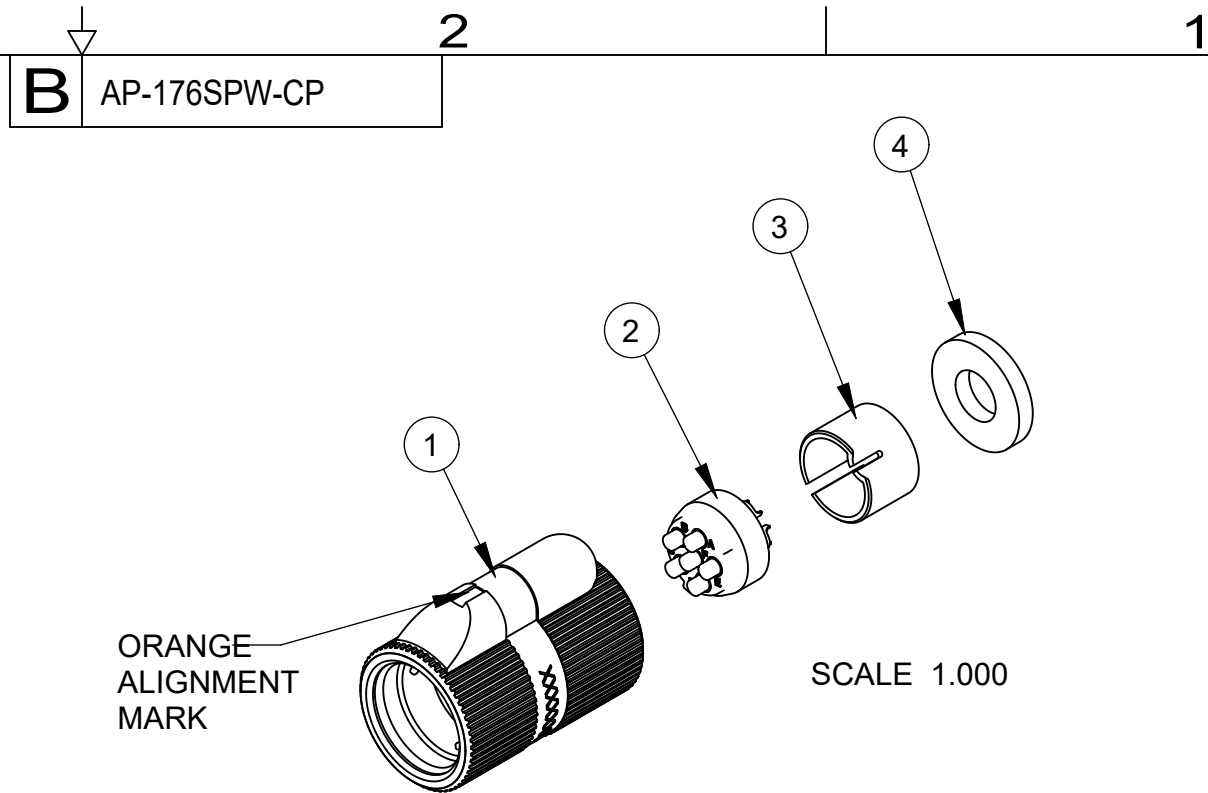


ITEM #	PART #	QTY	DESCRIPTION	MATERIAL
1	AP-176-1	1	SHELL ASS'Y	GLASS FILLED NYLON & 303 SS
2	AP-146-6	1	INSERT ASS'Y	DIALLYPHTHALATE, TYPE SDGF & GOLD PLATED BRASS
3	AP-105-5	1	STRAIN RELIEF	NYLON
4	AP-116-3	1	WASHER	RUBBER

NOTES:
 1) UNLESS OTHERWISE SPECIFIED, CONNECTOR MEETS ALL GENERAL REQUIREMENTS & SPECIFICATIONS OF MIL-C-55116



THIS DOCUMENT CONTAINS PROPRIETARY INFORMATION OF NEXUS, INCORPORATED AND SUCH INFORMATION MAY NOT BE DISCLOSED TO OTHERS FOR ANY PURPOSE OR USED FOR ANY PURPOSE WITHOUT THE WRITTEN CONSENT OF NEXUS.

DWN. BY SPL DATE 8/20/18					MATERIAL	
CHECKED BY					FINISH	
APPR. BY					WEIGHT — SCALE = 2.00 : 1	
UNLESS OTHERWISE SPECIFIED: DIMENSIONS ARE IN INCHES &/OR [mm]					TITLE AUDIO PLUG	
TOLERANCES: DECIMAL: .XX[X.X] .XXX[X.XX] ±.01[0.3] ±.005[0.13]						
FRACTION: X/X ±1/64					DO NOT SCALE DWG. SHEET 1 OF 1	
ANGLES: X ±.5					NEXUS STAMFORD, CONN	
LET. REVISION CN # DATE CHK.					SIZE B DWG. NO. AP-176SPW-CP	
A	NEW RELEASE		8/20 2018	SPL		