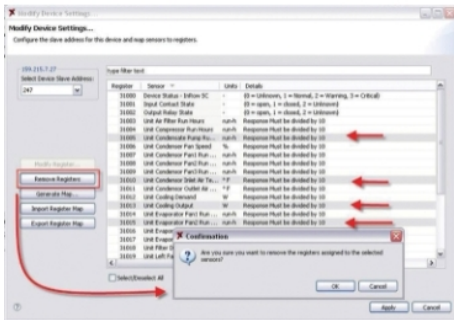


Product data sheet

Characteristics

AP95MODBUS

StruxureWare Data Center Expert Modbus TCP Output Module



Overview

Presentation	The add-on Modbus TCP Output Module enables connection to Building Management Systems through ethernet transmission, ensuring fast data transmission.
Lead time	Usually in Stock

Ordering and shipping details

GTIN	731304268802
Package weight(Lbs)	0.99 lb(US) (0.45 kg)

Packing Units

Package 1 Height	9.02 in (22.9 cm)
Package 1 width	7.01 in (17.8 cm)
Package 1 Length	0.24 in (0.6 cm)

Offer Sustainability

REACH Regulation	REACH Declaration
EU RoHS Directive	Pro-active compliance (Product out of EU RoHS legal scope) EU RoHS Declaration
Optimized Energy Efficiency	Energy efficient product
Take-back	Take-back program available

The information provided in this documentation contains general descriptions and/or technical characteristics of the performance of the products contained herein. This documentation is not intended as a substitute for and is not to be used for determining suitability or reliability of these products for specific user applications. It is the duty of any such user or integrator to perform the appropriate and complete risk analysis, evaluation and testing of the products with respect to the relevant specific application or use thereof. Neither Schneider Electric Industries SAS nor any of its affiliates or subsidiaries shall be responsible or liable for misuse of the information contained herein.