

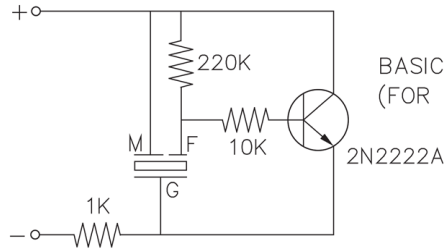
SPECIFICATIONS

| PARAMETERS | VALUES | UNITS |
|-------------------------|------------------------------|-------|
| RATED VOLTAGE | 12 | Vp-p |
| OPERATING VOLTAGE RANGE | 3 ~ 18 | Vp-p |
| RATED CURRENT (MAX) | 8 | mA |
| COIL RESISTANCE | 11,000 ± 30% | OHM |
| MINIMUM SPL @ 10 CM | 90 | dB |
| RESONANT FREQUENCY | 3,600 ± 500 | Hz |
| OPERATING TEMPERATURE | -20 ~ +60 | °C |
| STORAGE TEMPERATURE | -30 ~ +70 | °C |
| HOUSING MATERIAL | ABS | - |
| TERMINAL MATERIAL | Sn PLATED PHOSPHOR BRONZE | - |
| WEIGHT | 3.8 | grams |

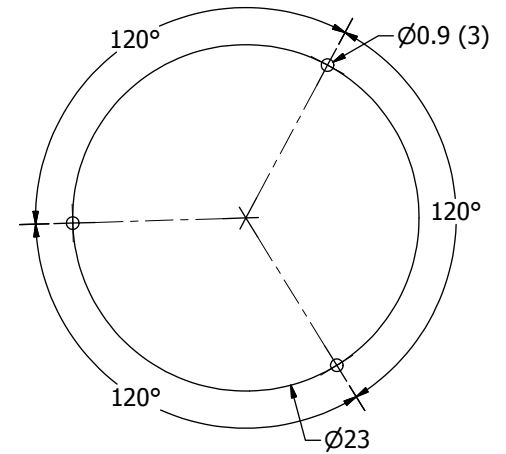
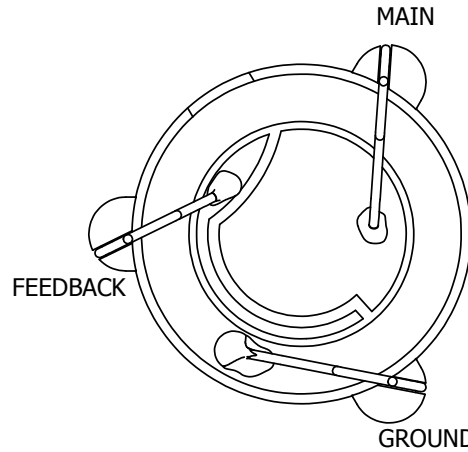
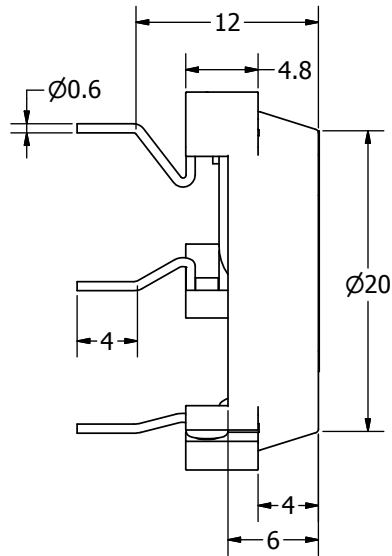
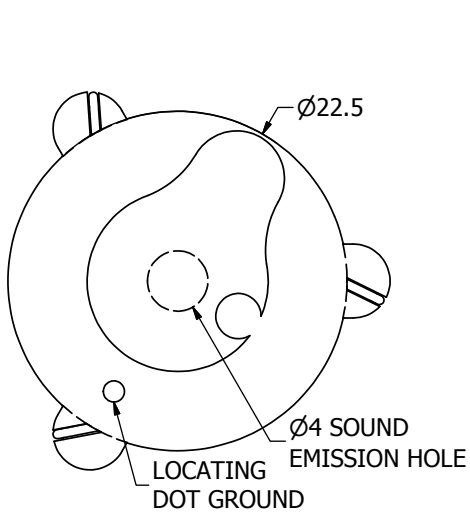
THIS DOCUMENT CONTAINS DATA PROPRIETARY TO PROJECTS UNLIMITED, INC. ANY USE OR REPRODUCTION, IN ANY FORM, WITHOUT PRIOR WRITTEN PERMISSION OF PROJECTS UNLIMITED, INC. IS PROHIBITED.
©2003, Projects Unlimited Inc.

REVISION HISTORY

| LTR | DESCRIPTION | DATE | APPROVED |
|-----|--|-----------|----------|
| - | RELEASED FROM ENGINEERING | 8/25/2005 | |
| A | REVISED BASIC TEST CIRCUIT | 1/4/2006 | B.R. |
| B | REVISED TO INVENTOR 3-D DRAWING TEMPLATE | 10/1/2008 | B.R. |



BASIC DRIVING CIRCUIT
(FOR TESTING ONLY)



NOTES:

1. ALL DIMENSIONS ARE IN MILLIMETERS.
2. SPECIFICATIONS SUBJECT TO CHANGE OR WITHDRAWAL WITHOUT NOTICE.
3. THIS PART IS RoHS 2002/95/EC COMPLIANT.

| | | | | | | | | |
|--|-------------------|--------------------------|-----------|------------|-----------|---|-----------|------------|
| UNLESS OTHERWISE SPECIFIED: DIMENSIONS ARE IN MILLIMETERS, TOLERANCES ARE ±0.5 AND ANGLES ARE ±3°. | SIZE A3 | Designed by | Date | Checked by | Date | Approved by | Date | Drawn Date |
| | | J.A.F. | 8/25/2005 | B.R. | 8/25/2005 | E.P. | 8/25/2005 | 10/1/2008 |
| AT-2336-TWT-R.idw | | | | | | AT-2336-TWT-R Transducer (Electro-Mech) | | |
| | | Edition - Sheet 1 / 1 | | | | | | |