

Data Sheet

AT-2428-TT-R

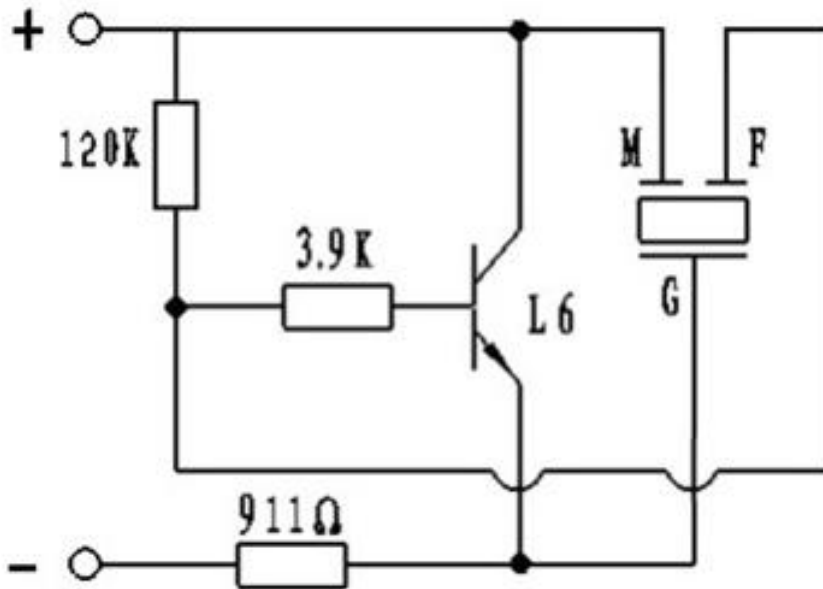
Features:

- 90 dB output with 12V, 3400 Hz input
- Hand solder and wave solder acceptable
- White PBT housing for use in appliances

Specifications

| Parameters | Values | Units |
|-------------------------------|--------------------------|------------------------|
| Rated Voltage | 12 | Vp-p |
| Operating Voltage Range | 5 ~ 20 | Vp-p |
| Current Draw at Rated Voltage | ≤12 | mA |
| Minimum SPL @ 10cm | ≥90 | dBA |
| Resonant Frequency | 3400±500 | Hz |
| Housing Material | White PBT | - |
| Weight | 3.3 | Grams |
| Acceptable Soldering Methods | Hand Solder, Wave Solder | See Page 3 for details |
| Environmental Compliances | RoHS | - |
| Storage Temperature | -30 ~ +85 | °C |
| Operating Temperature | -30 ~ +70 | °C |

Recommended Drive Circuit

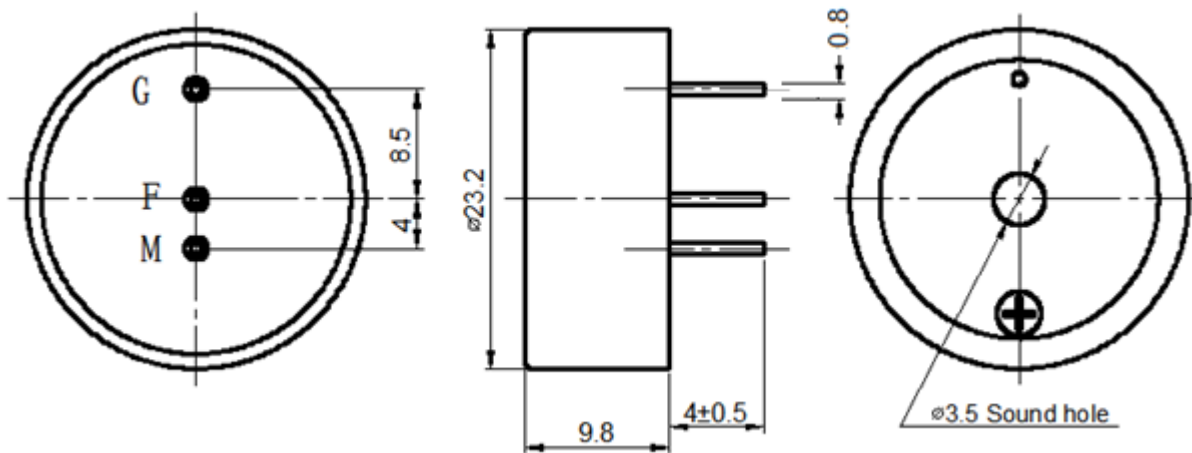


Reliability Testing

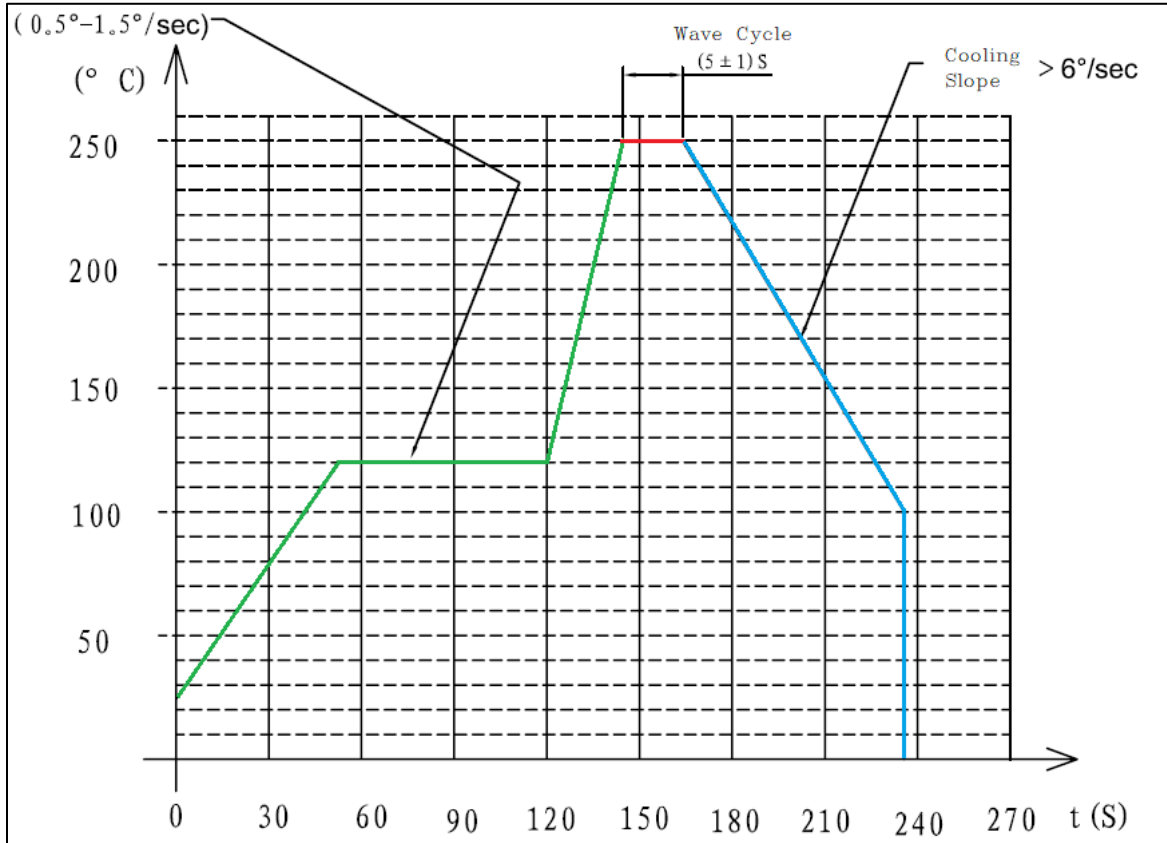
| Type of Test | Test Specifications |
|---------------------------|---|
| High Temperature Test | +90±2°C, 96 Hours |
| Low Temperature Test | -40±2°C, 96 Hours |
| Humidity Test | 40±2°C, 93(+2/-3)% RH for 96Hrs |
| Temperature Cycle Testing | -40±2°C, 30minutes +20±2°C, 15 minutes +90±2°C, 30 minutes +20±2°C, 15 minutes Total of 5 cycles |
| Vibration Test | 10 to 55 Hz band of vibration frequency to each of 3 perpendicular directions for 2 hrs. |
| Drop Test | The part shall be dropped from the height of 70cm onto a 10mm thick wooden board; 3 times per axial direction (x, y &z) a total of 9 times. |

After 4 hours at room temperature, the product shall meet specifications. SPL should be within ±10dB compared with initial value.

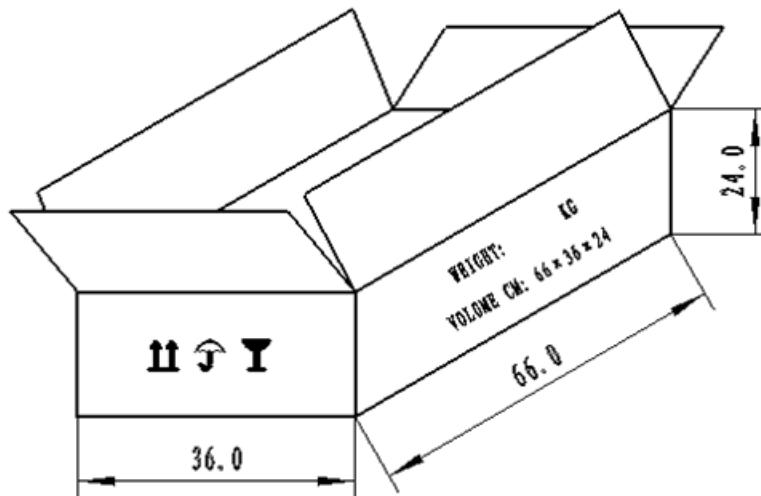
Dimensions (Units: mm Tolerance: ±0.5mm)



Recommended Wave Soldering Procedure



Packaging



NOTES:

1. 50 PCS per bag
2. Total 40 pags per carton
3. Total 2000 PCS a carton
4. Volume: 66 x 36 x 24cm